



Laboratoire de Glaciologie et Géophysique de l'Environnement

OSUG



Observatoire des  
Sciences de l'Univers  
de Grenoble

# Cryosphere, Atmosphere, Climate and Anthropic impacts in the Andes: Research structures and observation networks

Patrick GINOT et al.  
(Grenoble – FRANCE & La Paz - BOLIVIA)  
[patrick.ginot@ird.fr](mailto:patrick.ginot@ird.fr)



OSUG

Observatoire des  
Sudètes de l'Université  
de Grenoble

## The announced death of Chacaltaya glacier in 2010



OSUG

Observatoire des  
Sphères de l'Environnement  
de Grenoble

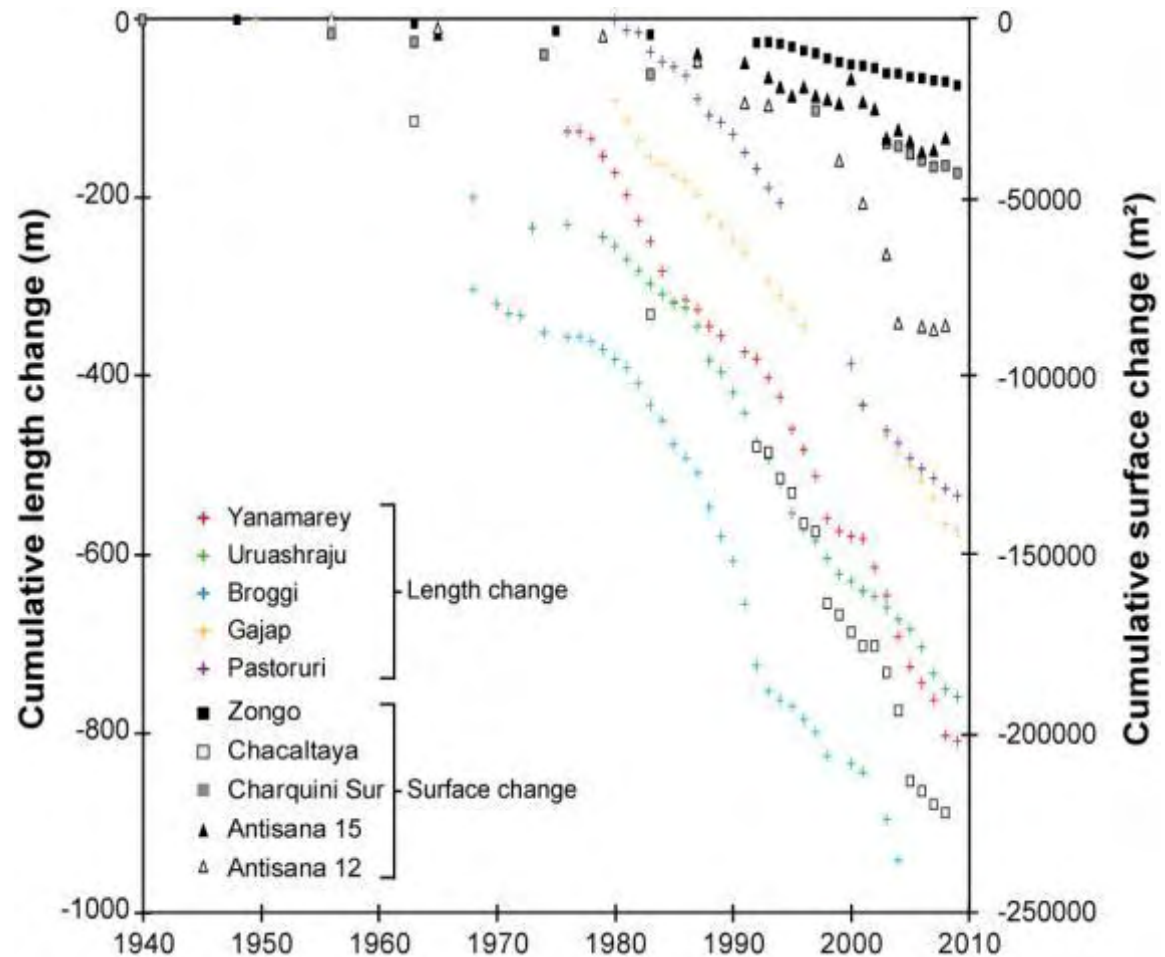
OSUG

Observatoire des  
Sciences de l'Univers  
de GrenobleUniversität  
Zürich<sup>UZH</sup>

## How glaciers of the tropical Andes changed since the mid-20th century?

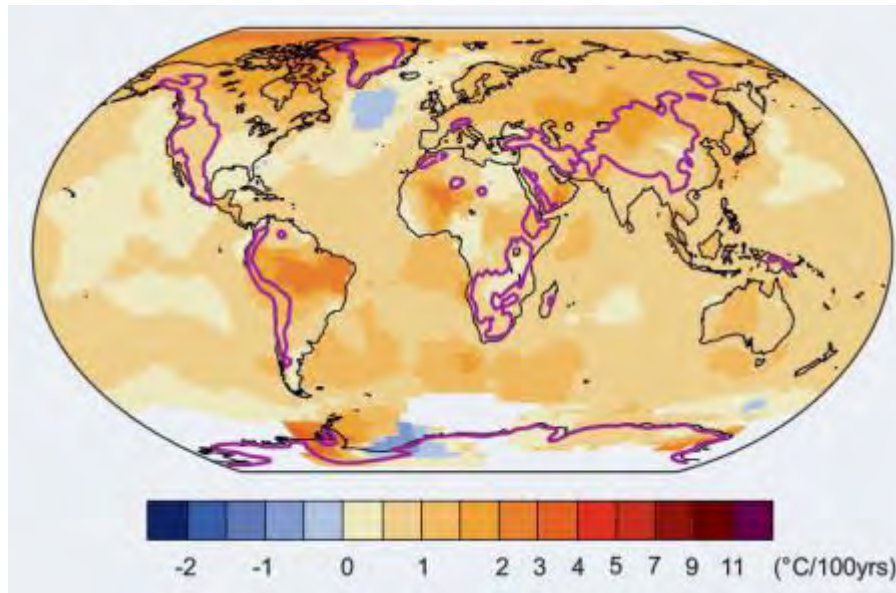
### Cumulative length or surface changes in the tropical Andes.

Clear change in the late 1970s

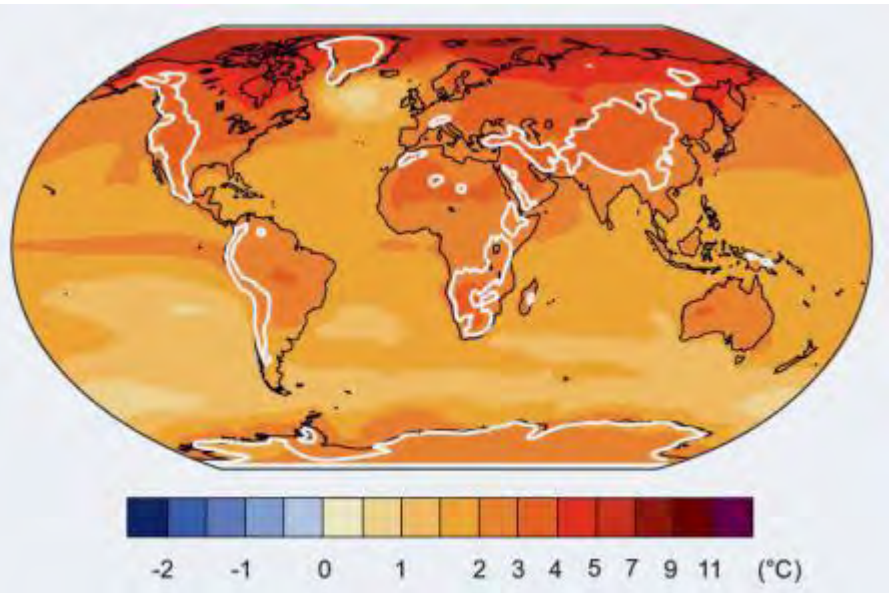


## Linking climate and glacier changes in the tropical Andes

1900 to 2013



1985–2005 to 2081–2100

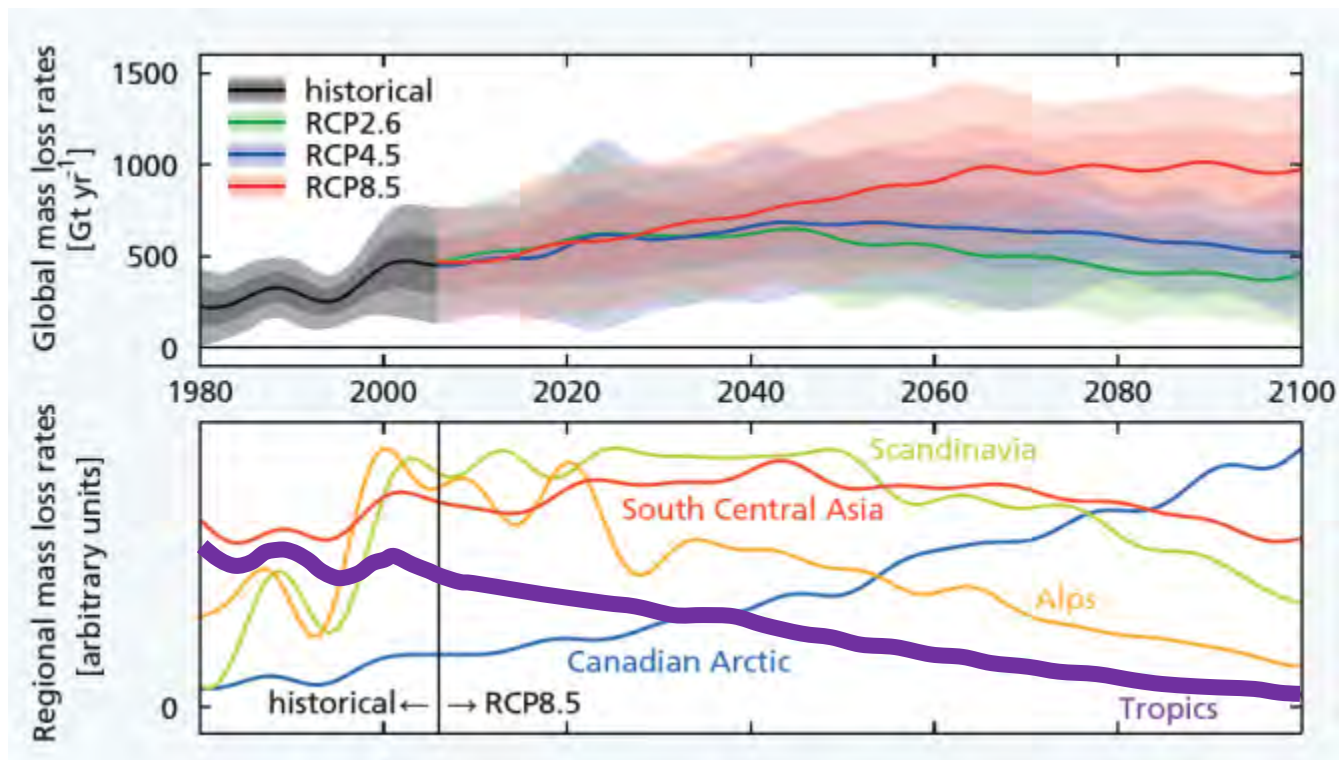


Linear trend in annual mean surface air temperature (left) from 1900 to 2013.

Modelled changes in temperature (right) from 1985–2005 to 2081–2100 according to a moderate-to-high emissions scenario (RCP6.0, CMIP5 Atlas subset from KNMI Climate explorer).

Purple and white lines indicate topography over 1000 m.

## Linking climate and glacier changes in the tropical Andes



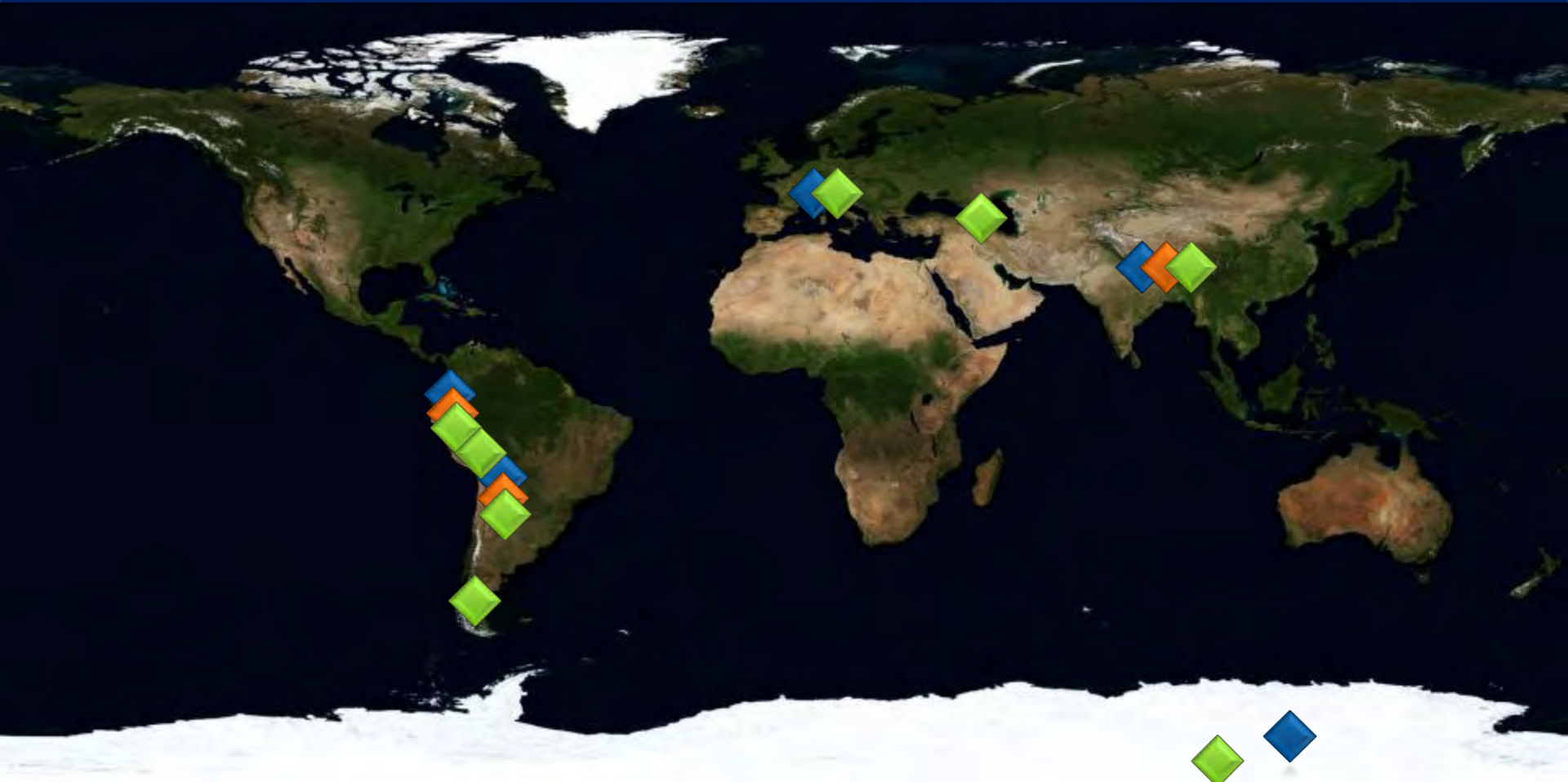
Reconstructions and projections of global net glacier mass loss rates.

The upper panel shows global sums for different climate scenarios, with the solid line indicating the multimodel mean and shading indicating model uncertainty.

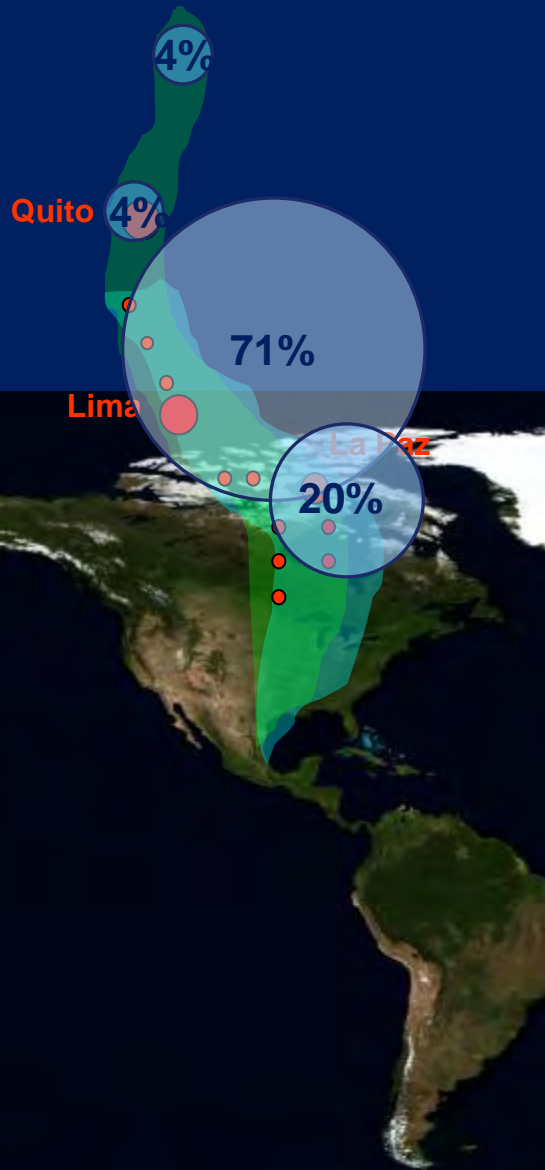
The lower panel depicts mass loss rates for selected regions. Many regional rates will begin (or have begun) to decline long before the global rate will.

# Main research axes and worksites

- ◆ document and understand the recent **evolution of the cryosphere in mountain basin** in link with the **climate change**
- ◆ quantify the **water resources** of the mountain basins by taking into account snow and glacier contribution in the context of **anthropogenic modifications**
- ◆ reconstruct past climate and environmental changes using **ice core archive** from high altitude glacier

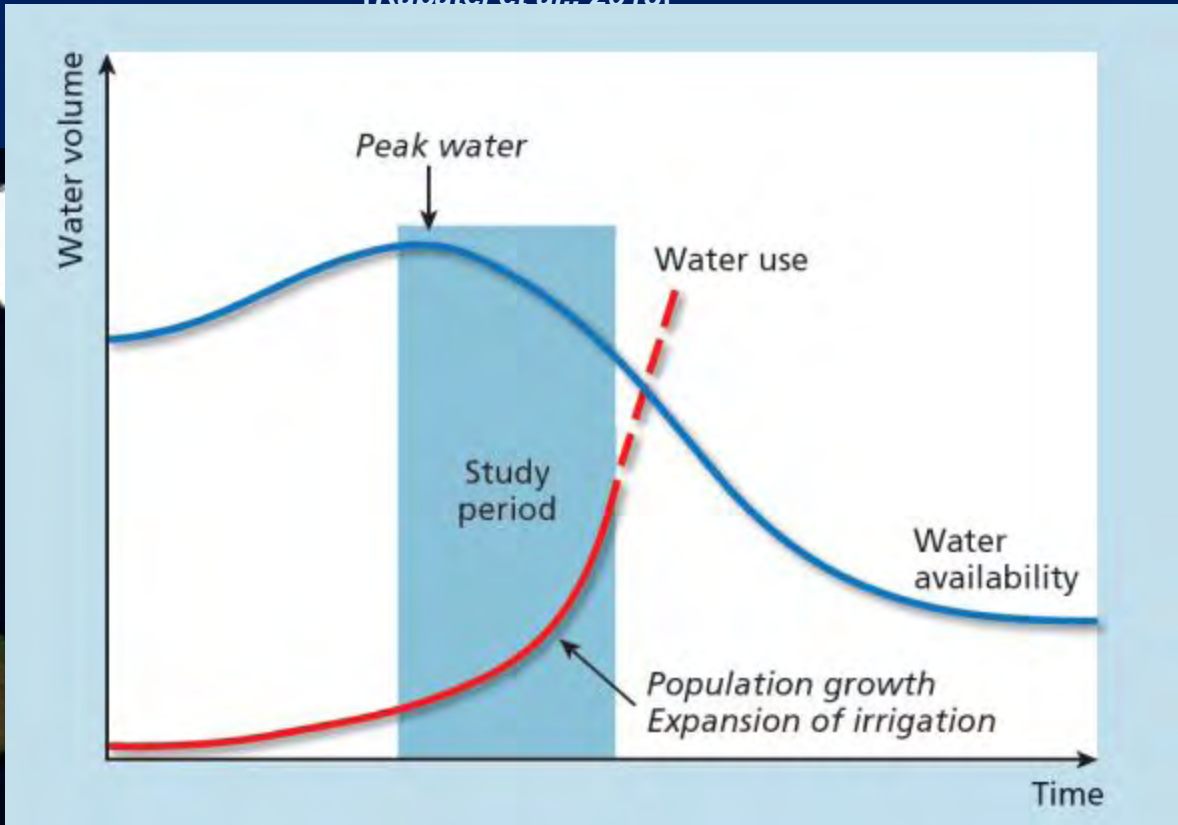


# Glacier distribution in water stressed areas



Glacier surface (2000s) : 1900 km<sup>2</sup>

[Rabatel et al., 2013]





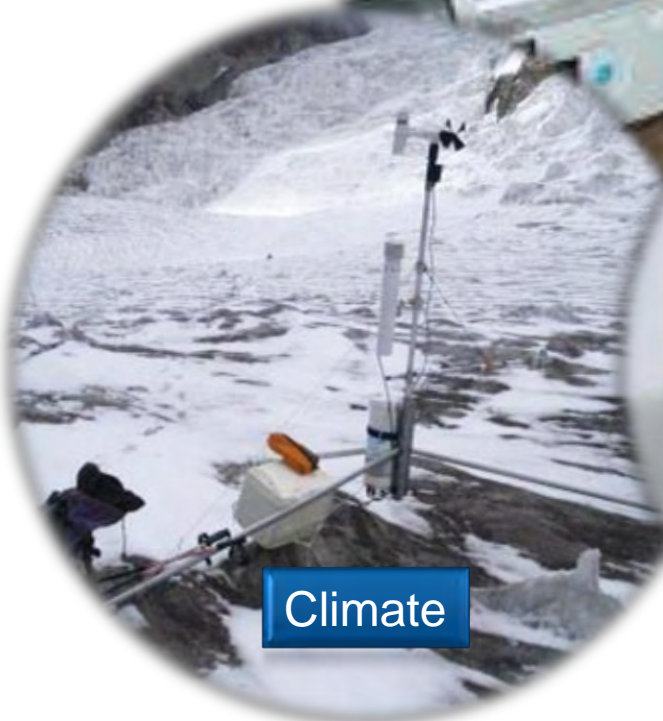
OSUG

Observatoire des  
Sécheresses de l'Est  
du Québec

Atmosphere



Climate



Cryosphere

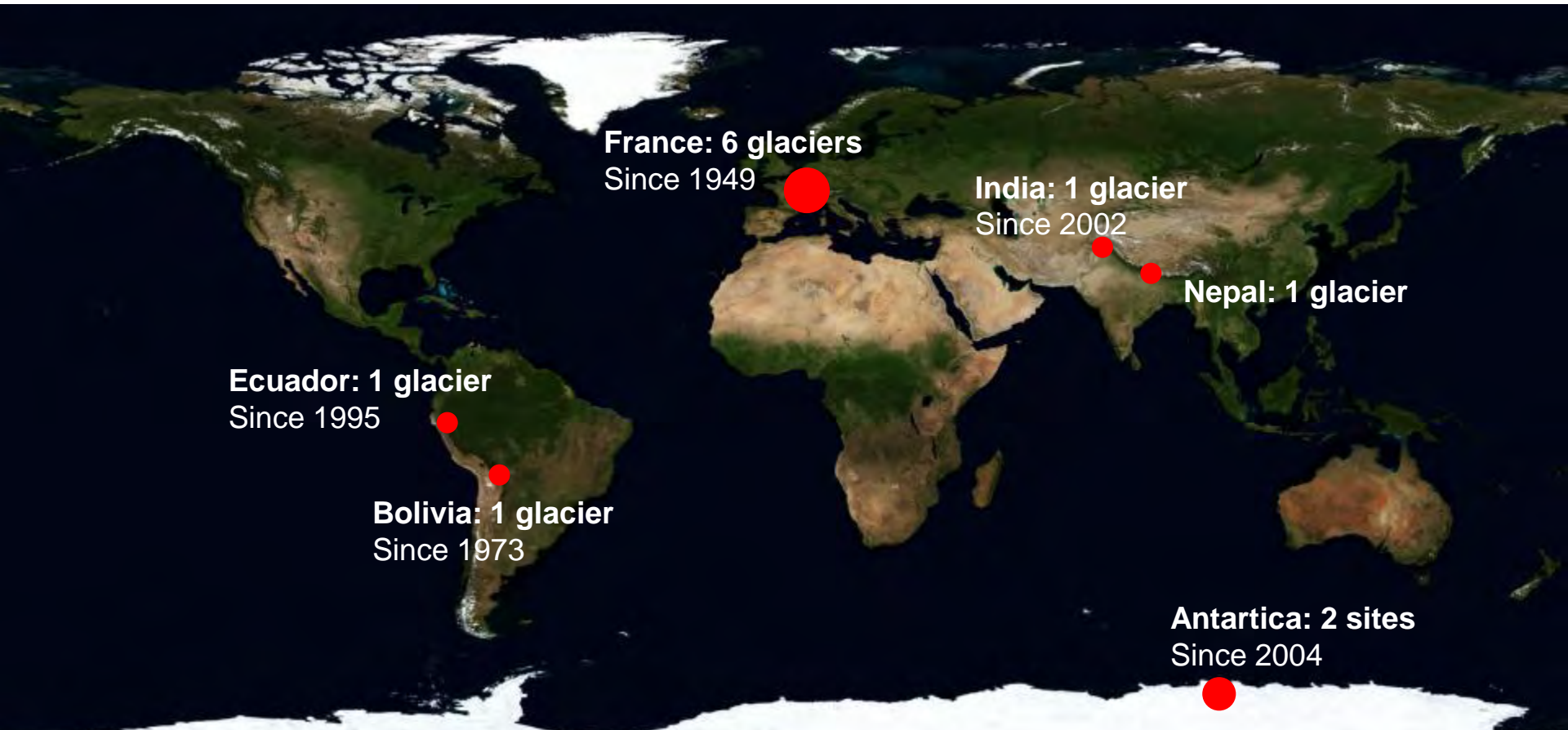


# Research based on Observation Networks

# GLACIOCLIM



A network of 'Reference' glaciers...



OSUG

Observatoire des  
Sécheresses de l'Orléans  
du Grand-Océan

... strongly supported and funded...

**Who?**

~20 persons (from France, Bolivia, Ecuador, India, Nepal) + students & post-docs

**Funding?**

~700 k€/yr (including salaries and logistic costs)

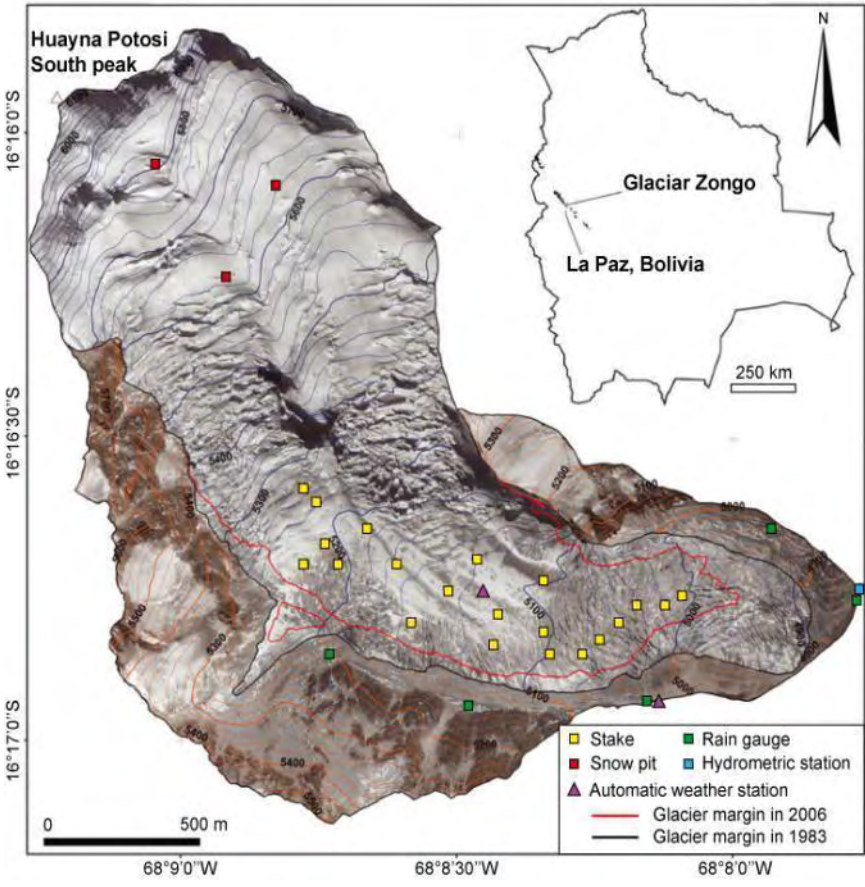


**Links with the international community**



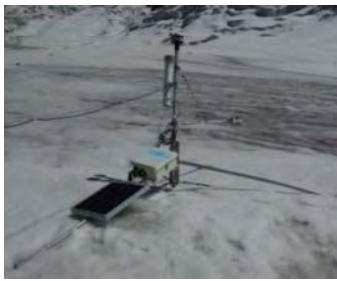


... with extensive long term *in situ* observations ...



Surface mass balance  
Topographical survey

Surface energy balance  
Meteorological monitoring



Zongo Glacier, Bolivia (tropical Andes)



... Freely available data

GLACIOCLIM website

[www-igge.obs.ujf-grenoble.fr/ServiceObs/](http://www-igge.obs.ujf-grenoble.fr/ServiceObs/)



Released in  
summer  
2015

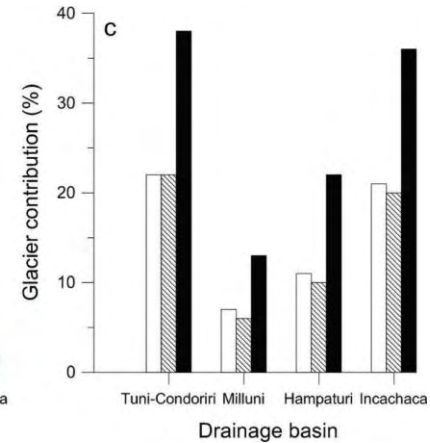
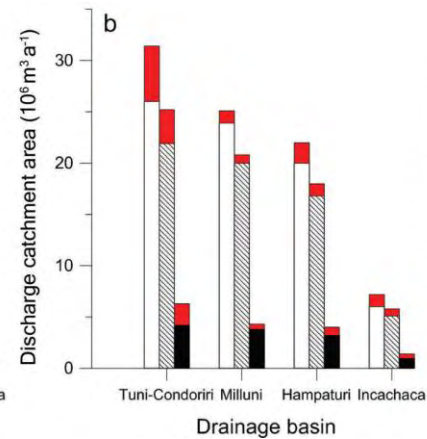
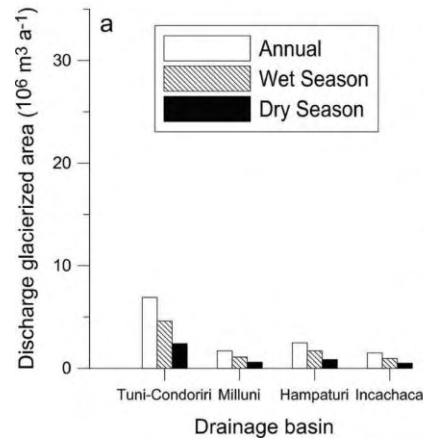
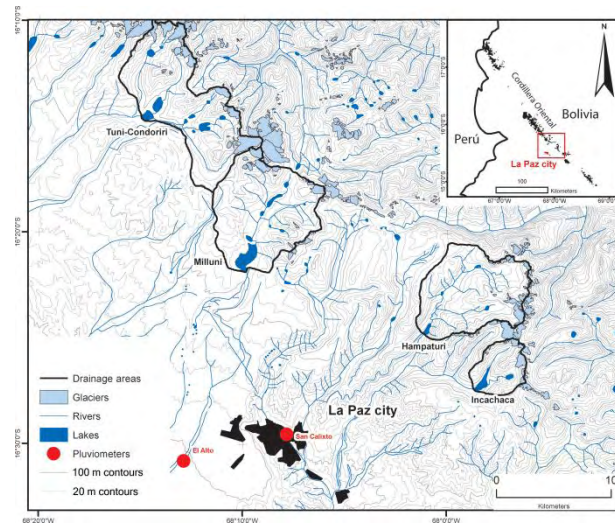
The screenshot displays the GLACIOCLIM Database website. The main content area features a search interface titled "Rechercher des jeux de données de séries temporelles ponctuelles". The search filters include:

- Site d'observation: Localisation - Nom de site
- Catégorie de variable: Type, Climatologie, Hydrologie
- Nom de station: Nom de station - Type de station
- Type de station: Point station, Station station, Période, Point sans station
- Période temporelle: 01-01-2010 to 31-12-2012

The search results section shows "Résultat de la recherche: 0 jeux trouvés". Below the search interface is a map of the study area, showing the location of Antisana and Zongo. The left sidebar contains a hierarchical tree of observation categories, including:

- STATION TYPES
  - Water station
    - glaciologie budget
    - Altimétrie
  - Flux station
    - HYDROLOGIE
    - HYD
  - Recording campaign
    - CLIMAT
    - W TRAVERSECT
    - W CLIMATO
    - W TOP
    - W LOP
  - Vegetation observation
    - Long term
      - Seasonal
      - Scrubland/steppes
      - Ice location probe
      - Soil moisture station
      - WMS
      - Proximeter
      - Chemistry measurement
      - Point level recorder
      - Observation station
      - Reading campaign
  - OBSERVATION SITES
    - Observation sites
    - Measurement sites
  - HUMAN GEOGRAPHY
    - Basin
    - Case
    - Administrative boundaries
  - PHYSICAL GEOGRAPHY
    - Units of vegetation gradient
  - MICROCLIMATE
    - Local hydrography
      - Transferts local site (Riget)
      - Valleys
      - Valley catchments
      - Transferts local site (Riget)
      - Valleys catchments
      - Valleys
      - River
    - Regional hydrography
      - Thermal mass
      - Rivers (SRTM with 95 x 100m)

# Contribution of glacier runoff to water resources of La Paz city, Bolivia (16° S)



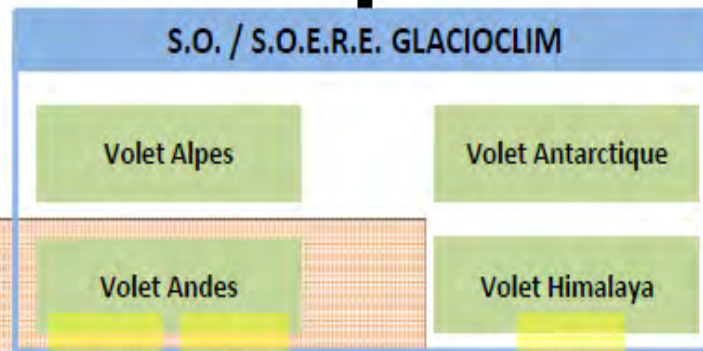
**With complete glacier disappearance:**  
**-12% annual scale**  
**-9% wet season**  
**-24% dry season**



# GlacioClim structure

**Organismes de tutelle du S.O.**  
Univ. J. Fourier – Grenoble 1, CNRS – INSU / SIC, IRD, IPEV, IRSTEA

**Organisme de tutelle du S.O.E.R.E.**  
AllEnvi



Réseaux internationaux



L.M.I. GREAT ICE			
Pérou	Colombie	Bolivie	Equateur
ANA	IDEMA	UMSA	INAMHI
UGRH		IHH	
	Univ. Medellin	UMSA	EPN
SENAMHI		IGEMA	
IGP		COBEE	EPMAPS

JEAI GRANT 2007-10 (covering Univ. Medellin, UMSA, IGEMA, COBEE)  
 JEAI IMAGE 2009-12 (covering UMSA, INAMHI, EPN, EPMAPS)

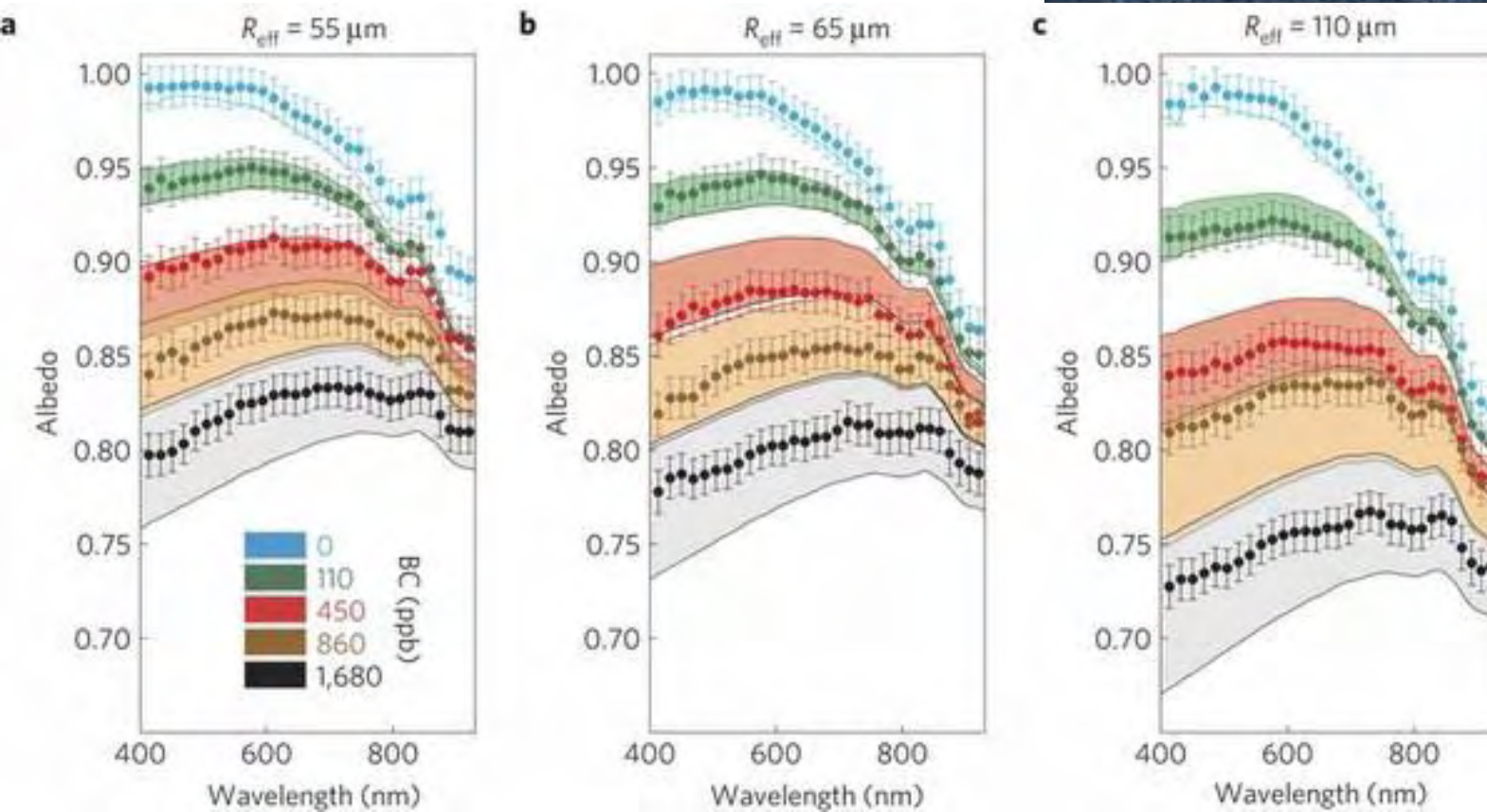
Népal

ICIMOD

Univ. Katmandu

NAST

## Black Carbon increases snow/ice melting

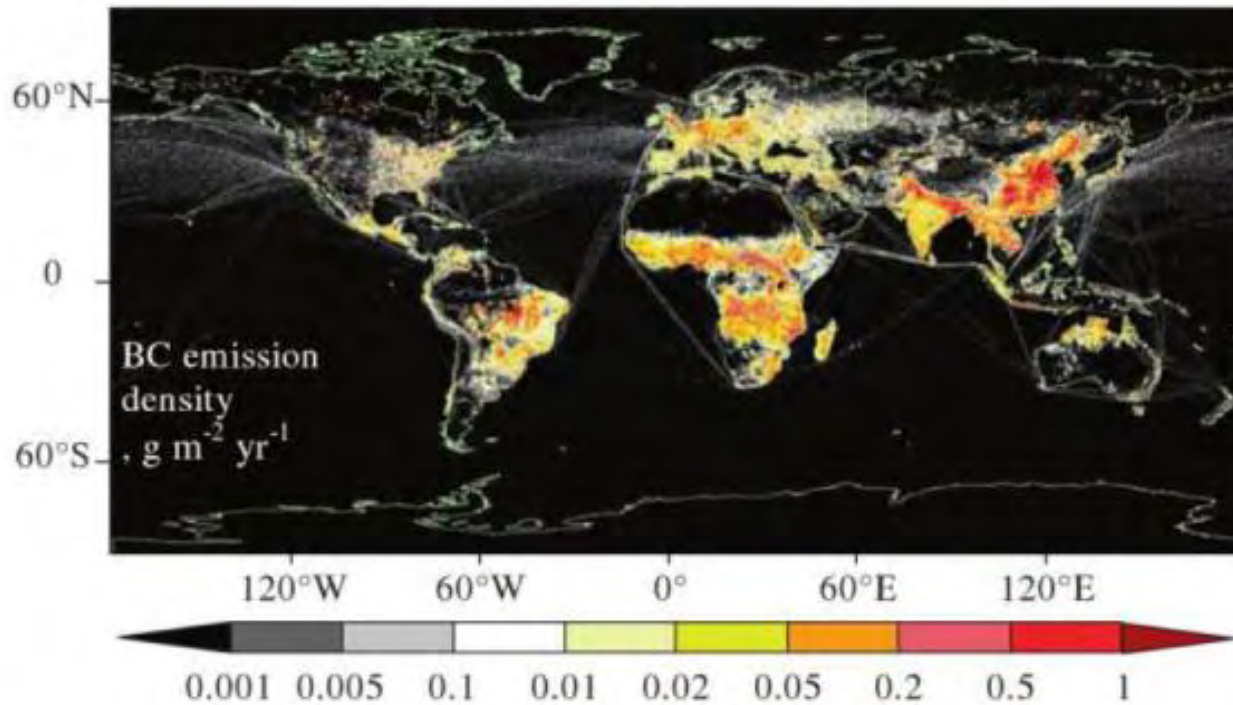


(Hadley et al., 2012)  
In Science





## Black Carbon emission in South America increase since decades



**Fig. 7.2** Spatial distribution of BC emission in 2007 according to the PKU-BC-2007 inventory at a resolution of  $0.1^\circ \times 0.1^\circ$ . Reproduced with Permission (Wang et al. 2014a)



Smoke transported above Andean mountains



**Glacier melting**

n health

tems



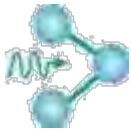
**Biomass burning**

09.09.2010



10.09.2010

OSUG

Observatoire des  
Sciences de l'Univers  
de Grenoble

# Chacaltaya (CHC)

A "Global Atmospheric Watch"  
(GAW) Station in the high Andes

Running since 2011

OSUG

Observatoire des  
Sciences de l'Univers  
de GrenobleIRD  
Institut de recherche  
pour le développement

L O G E

TROPOS  
Laboratoire pour  
l'atmosphère - troposphère

ISAC



 The logo of Stockholm University, featuring a circular emblem with a tree and a figure, surrounded by the text "STOCKHOLM UNIVERSITÄT" and "STOCKHOLM UNIVERSITY".
 

Stockholm  
University

 A logo with a green and blue circular design.
 

LSCE





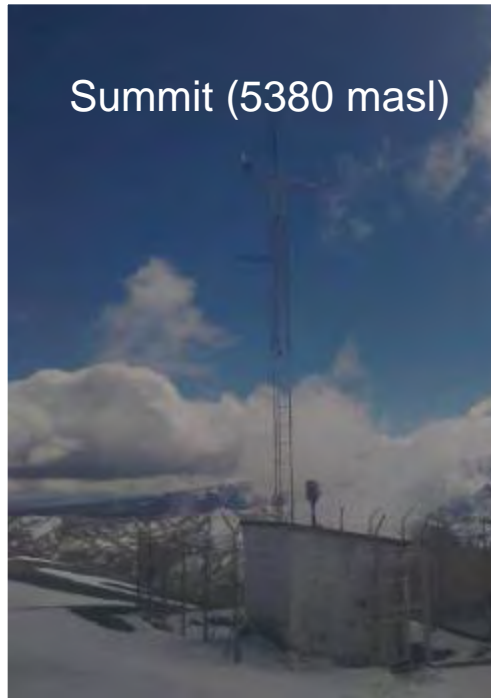
## «CLimate relevant Aerosol Properties from near surface Observations » – CLAP

### Objectives:

- **observe and study atmospheric aerosol**, with the aim to understand its sources (natural / anthropogenic, primary / secondary), and its climate impact (direct and indirect)
- **target variables** are: the concentrations of particles (number per size range), chemical composition, and their optical properties (absorption, scattering)
- on sites (1) of **regional and global relevance** operated in whole or in part by French teams and (2) that have demonstrated their ability to conduct observations over long periods

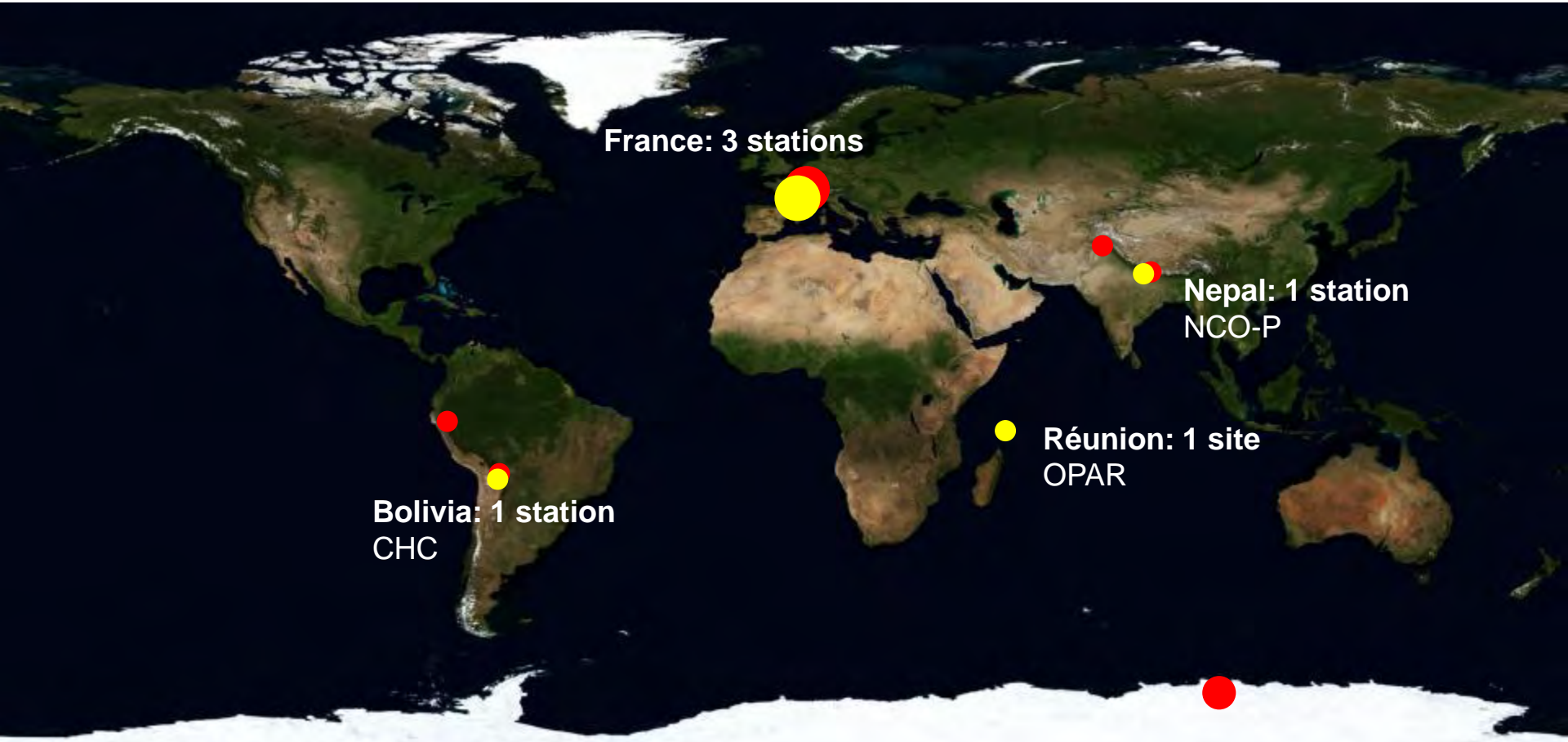


# GAW/CHC Chacaltaya Station (5240 masl)

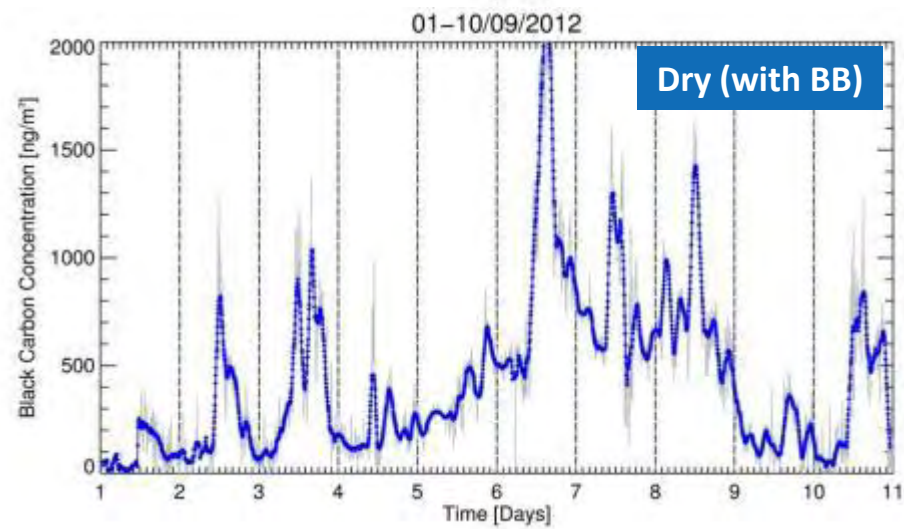
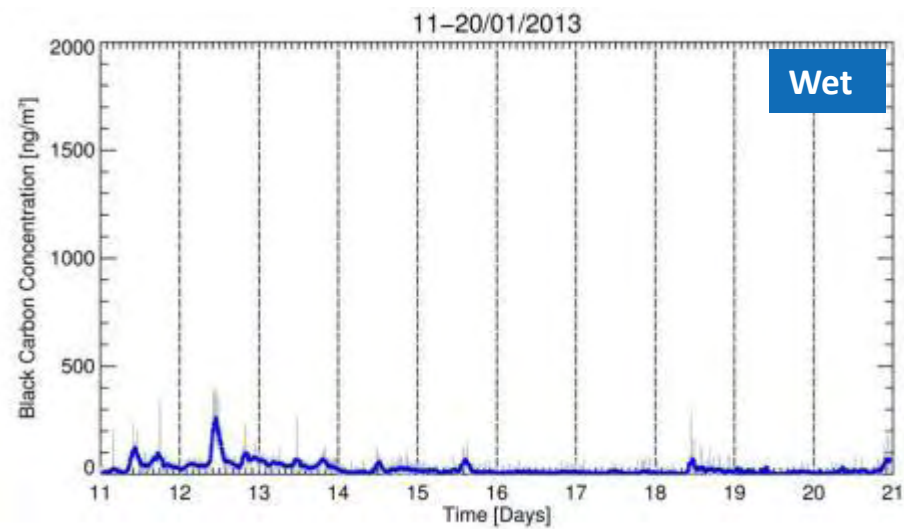
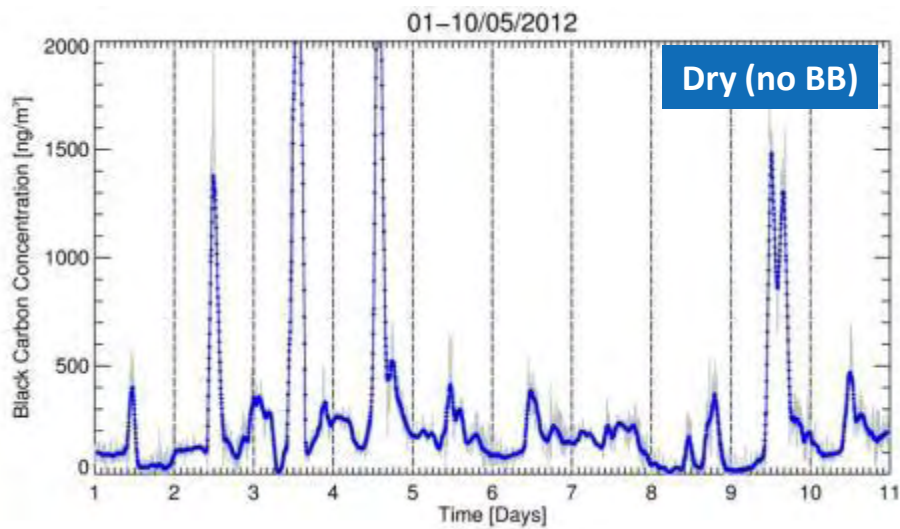




# SO-CLAP atmospheric monitoring stations

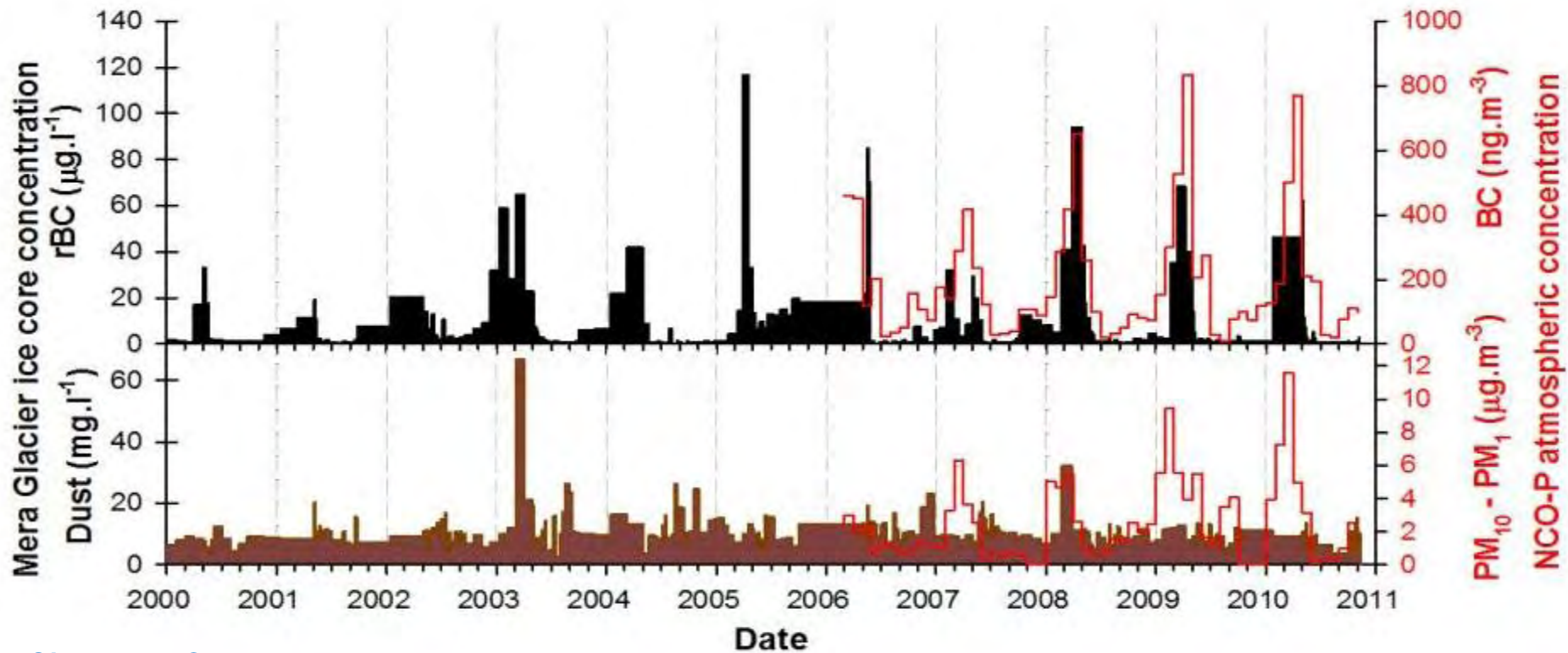


## Atmospheric Black Carbon





## Comparison between atmospheric and ice core concentrations (NCO-P station Nepal)



# Black carbon and dust impact on Himalayan glacier melting

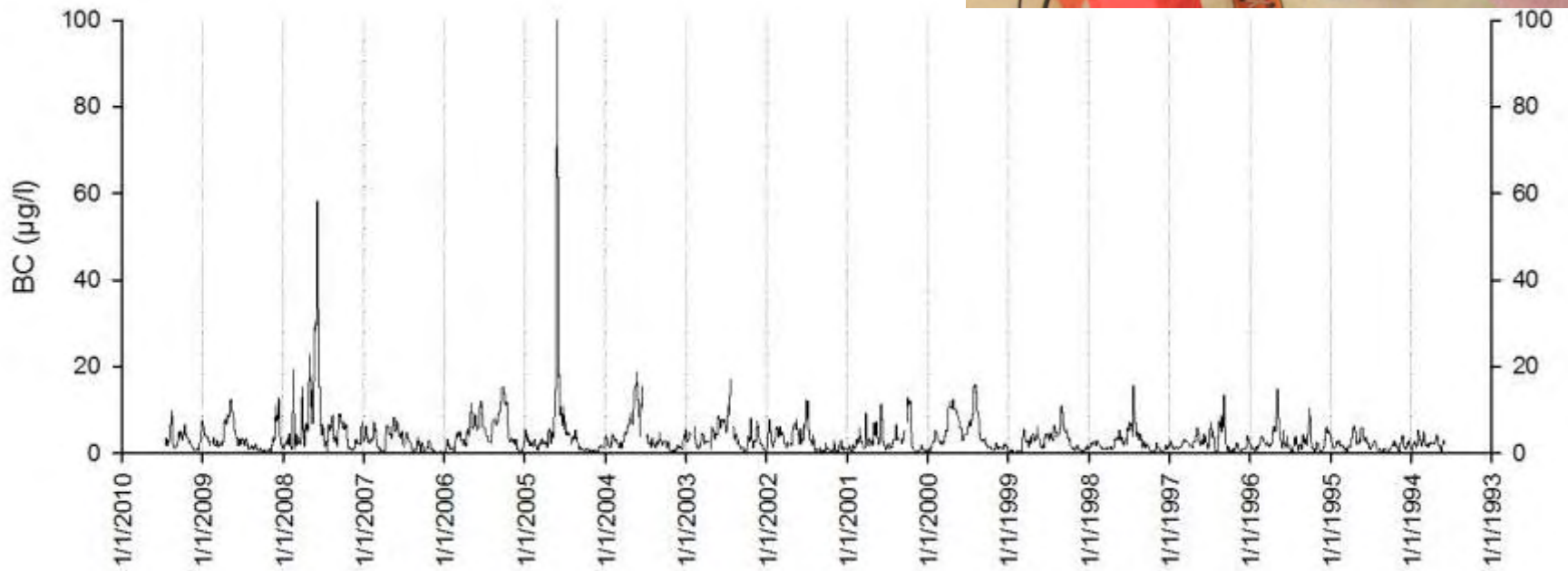


- ❖ At 5400m, impurities controls 12-23% of melting, when rBC alone accounts for 5-9% only
- ❖ On whole Mera Glacier, rBC increases melting of 1- 5%
- ❖ **Melting can occur over 6000m**

OSUG

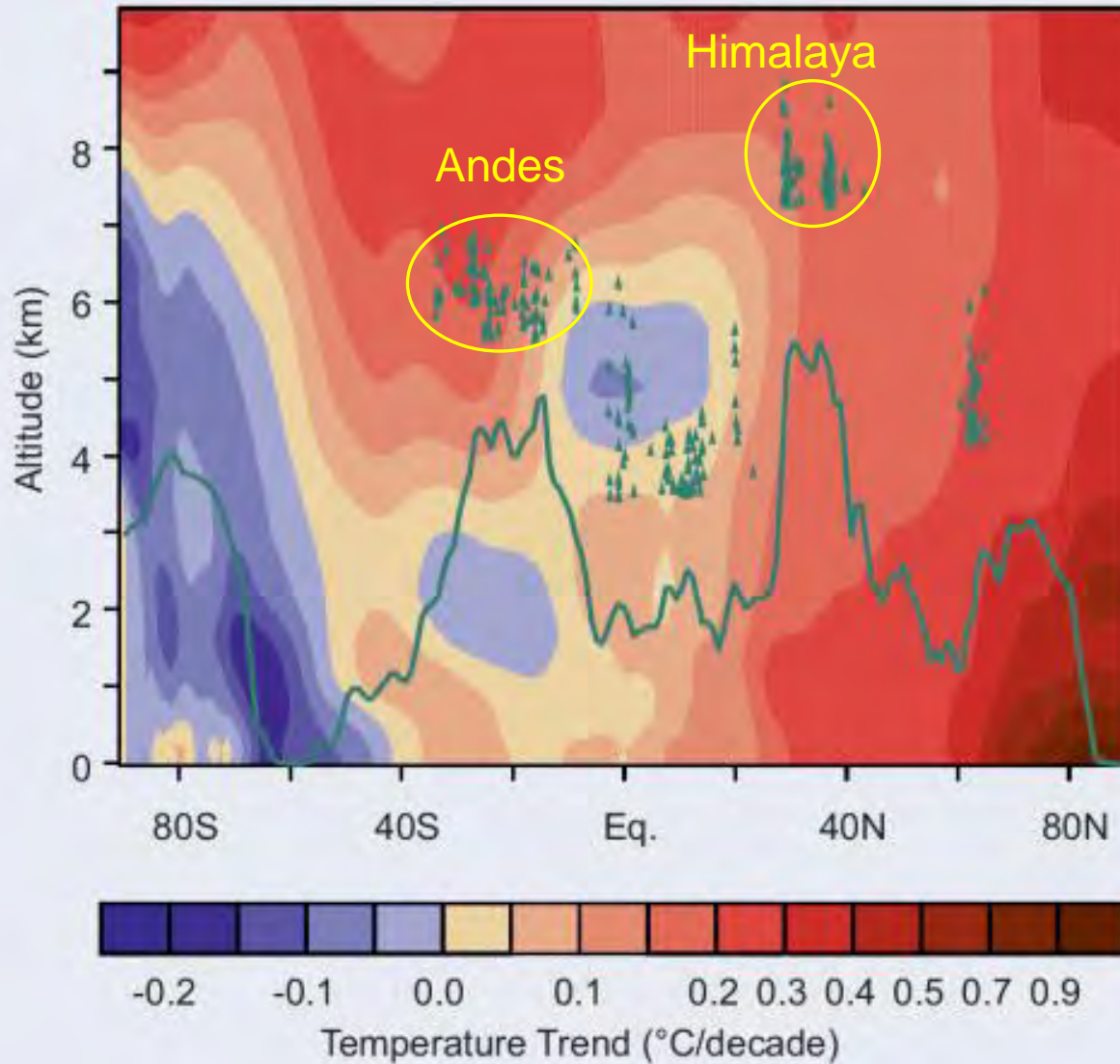
Observatoire des  
Sécheresses de l'Orléans  
du Recherche

## Black Carbon at 6300m in **Illimani ice core** - similar to Himalayan glacier levels



# « Saving Ice in Danger »





Linear trend in zonal annual mean temperature from 1979 to 2013.

The green line denotes the heights of large mountain ranges (e.g. Andes ca. 4 000 m near 20° S, Tibetan Plateau ca. 5 000 m near 30° N); individual peaks are shown as green triangles.

Data source: ERA-Interim reanalysis

# « Saving Ice in Danger »

- ❖ Warming of non-polar glaciers pushes them toward temperate conditions, unsuitable for climate/environmental reconstructions.
- ❖ “Ice cores” are the main climate archives which will disappear forever from the Earth’s surface
- ❖ It is our responsibility as scientists to preserve good quality ice cores from some of these glaciers, to be used in the future
- ❖ Propose a concerted international strategy for recovering and storing new ice cores



Help us compile a unique archive of ice core records, a truly world-class Global Climate Legacy to be handed down to future generations

### The ice tells the story of our climatic and environmental past

Glacial ice holds a wealth of information about past changes in climate and the environment, such as variations in temperature, greenhouse gases and pollutants. Mountain glaciers at high altitude are the only indirect records which allow us to reconstruct climate and environmental changes in detail and over extended periods (up to 25,000 years on Sajama, Bolivia).

### Climate memory living on borrowed time

Unfortunately, the mountain glaciers are retreating unrelentingly and these extremely fragile ice core records are now at risk. Their quality is suffering as a result of global warming and, eventually, they will quite simply disappear.





## Building a legacy for future generations

We have a chance, at least for a few more years, to build a legacy of intact ice cores taken from these endangered glaciers.

**If we act now and create this legacy, scientists in centuries to come will have access to high-quality scientific resources.** They will then be able to conduct unprecedented analyses made possible by the development of techniques and the emergence of new ideas.

### The project

The project focuses on high-altitude sites validated via previous studies, but which are at risk of disappearing :

- Col du Dôme (4,350 m) on the Mont Blanc massif
- Illimani (6,432 m) in Bolivia. This site has been identified as the most at risk in the Andes

Three complete ice cores will be drilled on each glacier – one will be analysed to provide a detailed reference and two will be stored in Antarctica for legacy records.

These are complex missions requiring great care and skill both in human and in technical terms:

- 20 days in the field for six scientists on the Col du Dôme at an altitude of 4,350 m with rotation by helicopter
- 50 days in the field for eight scientists on Illimani at an altitude of 6,300 m with guides and local stakeholders

The ice cores are extracted using technology developed right here in Grenoble, each one measuring over 130 m long.

An extremely strict cold chain will be established from the glacier to the storage location in Antarctica. There, the ice cores will be handed over to the French Paul-Emile Victor Polar Institute for safe storage at a temperature of  $-50^{\circ}\text{C}$  at the Concordia base.

An international scientific committee comprising members of partner organisations and under the auspices of international organisations (committee of scientists working on ice cores, UNESCO, etc.) will ensure the preservation as well as the exceptional and appropriate use of these samples by future generations.





## Project Partners :



The project contributes to the **UNESCO International Hydrological Programme (IHP)** within the framework of the snow, glacier and water resources activities of the IHP-VIII (2014-2021) '*Water Security: Responses to Local, Regional and Global Challenges*'.



## Under the patronage of :

**Jean Jouzel**, climatologist and vice-president of the IPCC

**Luc Jacquet**, french filmmaker and Oscar-winner for “March of the Penguins” and currently releasing his latest film « Ice & Sky ».

**Funded through private and industrial sponsorship (2 M€)**

# DES ARCHES DE NOÉ DANS LES PÔLES

Pour conserver des archives climatiques menacées de disparition, des morceaux de glacier du Mont-Blanc et de la cordillère des Andes seront stockés au pôle Sud.

**L**e biblique Noé conservait, dit-on, des animaux dans son arche pour les préserver du déluge. Mais ça, ce sont des fables. En revanche, le déluge de degrés qui s'annonce est, lui, bien réel et amorcé depuis longtemps. Le réchauffement climatique, outre les tragédies qu'il promet aux populations, entraîne aussi des pertes irréremédiables pour la connaissance scientifique. Notamment avec la fonte des glaciers de montagne. En analysant des bulles d'air emprisonnées dans la glace, on peut retracer l'évolution du climat sur vingt mille ans. Des témoins clés du passé, donc, sans lesquels les négationnistes du réchauffement climatique auraient eu la part belle.

Seulement, les glaciers fondent. La Terre devrait se réchauffer d'environ 5 degrés au cours du XXI<sup>e</sup> siècle, et au Mont-Blanc la température a déjà augmenté de 1,5 degré ces dix dernières années. Les glaciers contiennent donc des données vouées à disparaître avant même d'avoir été exploitées par les scientifiques. Une solution serait de les conserver au frigo (les glaciers, pas les scientifiques). Mais un vrai frigo peut tomber en panne et il faut du personnel pour l'entretenir, il est donc à la merci de toutes sortes d'événements. Comment faire? Des chercheurs ont eu une idée. Il existe un frigo capable de garder des carottes de 140 mètres sans jamais tomber en panne, quoi qu'il arrive : c'est l'Antarctique. Il y fait une température moyenne de -50 degrés, ce qui laisse de la marge, même si là-bas aussi le réchauffement est en marche. Et quand bien même une guerre nucléaire décimerait la planète, on peut espérer que le pôle Sud soit l'une des dernières régions touchées.

C'est ainsi qu'est né le projet « Patrimoine de carottes glaciaires ». Un programme international dont l'un des principaux porteurs est Patrick

FAUT-IL STOCKER DES CAROTTES GLACIÈRES EN ANTARCTIQUE?



Ginot, chercheur à l'Institut de recherche pour le développement : « Nous allons prélever des carottes de 10 cm sur 140 m de longueur, dans des glaciers de montagne, puis les stocker en Antarctique dans la base scientifique franco-italienne Concordia. Cela permettra aux scientifiques du futur de les étudier avec les nouvelles technologies dont ils disposeront. » Si tout se passe comme prévu, le premier forage aura lieu en 2016 au col du Dôme, au Mont-Blanc, à 4 300 mètres. Et le deuxième, en 2017, à l'illimani, un sommet bolivien de 6 300 mètres qui domine la ville de La Paz. En 2019, les précieuses carottes seront

enfin conduites (en plusieurs morceaux) en Antarctique, où elles seront gelées pour éviter justement d'être cuites.

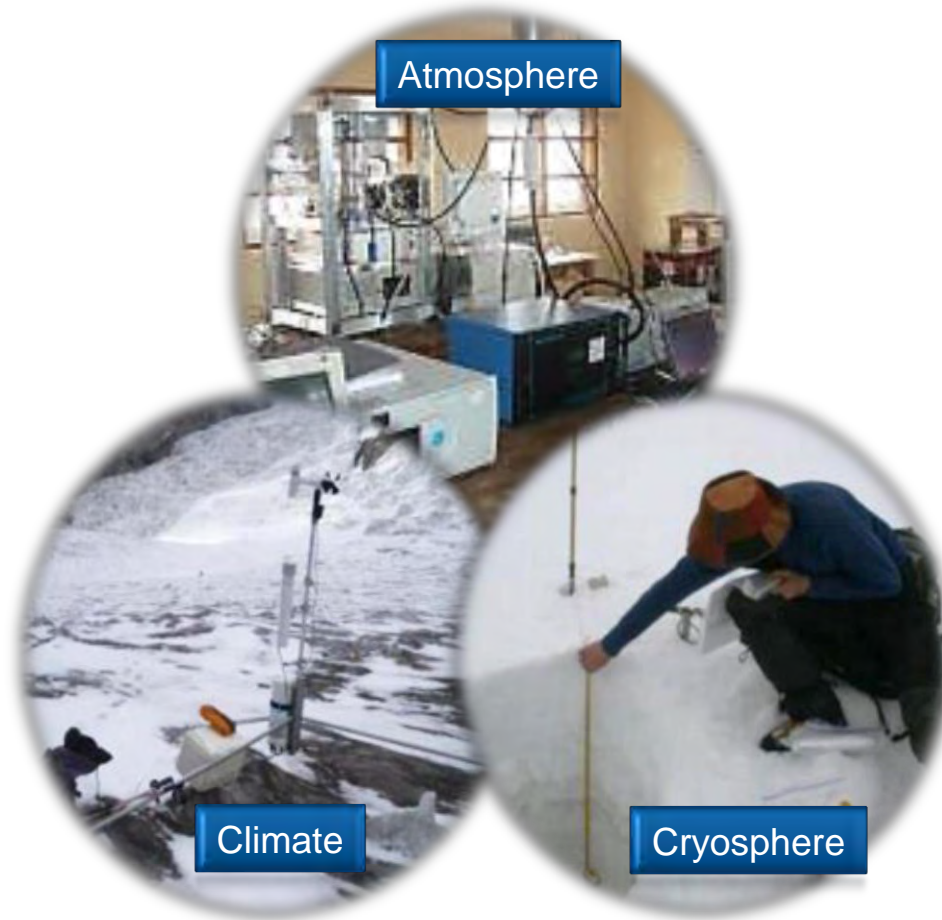
**PAROLES, PAROLES, PAROLES...**

En fait, ce projet s'inspire d'une réalisation qui, elle, existe depuis 2008. Ici, il ne s'agit pas de glace, mais de graines. Et nous ne sommes pas en Antarctique, mais à l'autre bout de la Terre, sur l'île du Spitzberg, dans l'océan Arctique norvégien. La réserve mondiale de semences du Svalbard est un bunker construit dans une ancienne mine de charbon à 120 mètres de profondeur. Des millions d'échantillons de graines, de toutes les cultures de la planète, y sont précieusement conservés pour être ressuscités en cas de perte irrémédiable sur Terre (et ce ne sont pas les raisons qui manquent : catastrophes naturelles, guerres, manque de ressources, mais aussi changement climatique ou altération de la diversité due aux pratiques agricoles telles que les OGM...).

L'idée d'utiliser les pôles pour conserver des données périssables est très louable. Mais c'est quand même dommage d'être obligé d'en arriver là. Heureusement, toutefois, que des scientifiques innovent pour trouver des moyens de sauver, tant bien que mal, ce qui reste de notre planète. Pendant que le monde politique, lui, préfère se tourner les pouces en faisant de beaux mais inutiles discours. ■

1. Ce programme implique de nombreuses institutions : Laboratoire de glaciologie et géophysique de l'environnement (Grenoble), CNRS, Fondation de l'université Joseph-Fourier de Grenoble, Unesco... Il est également sous le haut patronage de Luc Jacquet, réalisateur de *La Marche de l'empereur* et, plus récemment, de *La Glace et le Ciel*, documentaire présenté en clôture du Festival de Cannes 2015 et qui dresse le portrait de Claude Lorius, le glaciologue qui a établi la relation entre le climat et la composition des glaces.

# Conclusion 1



**Long terms and structured « Observation Networks »  
are essential for climate relevant research**

## Conclusion 2



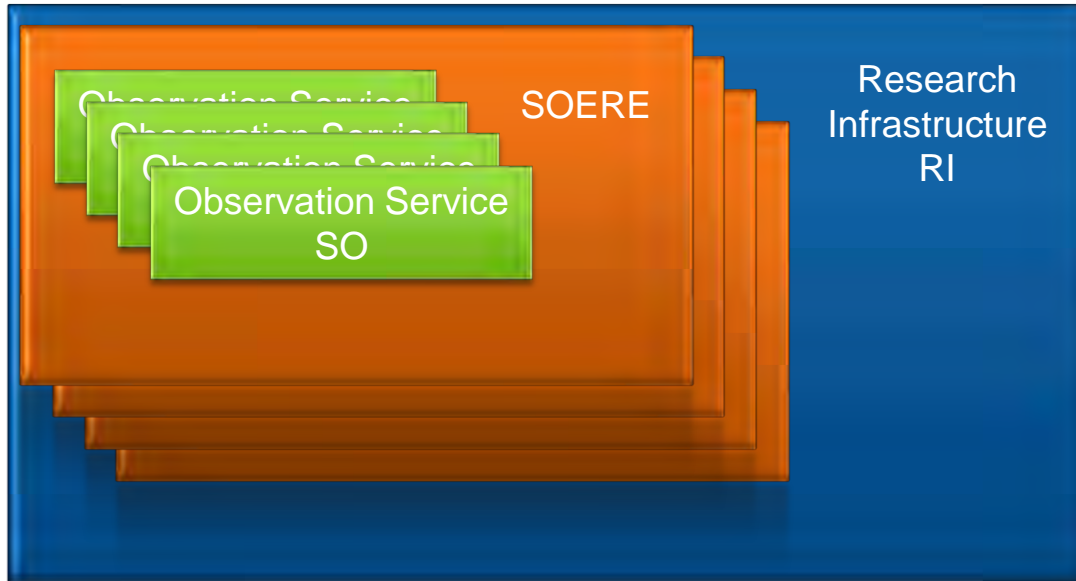
**It is not too late for saving some ice**

Gracias  
Thank You  
धन्यवाद  
Merci



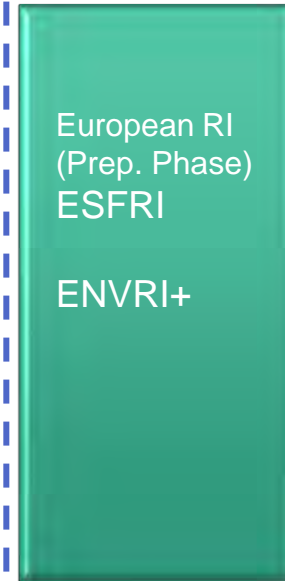
# Observation structures

French National Structure



European RI

International Program



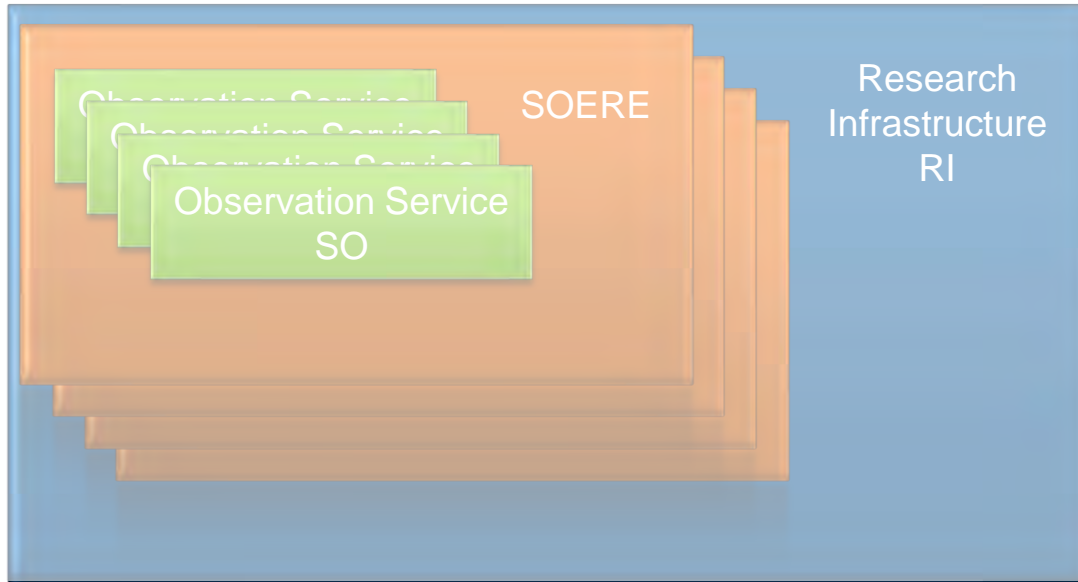
WMO





# Observation structures

National Structure

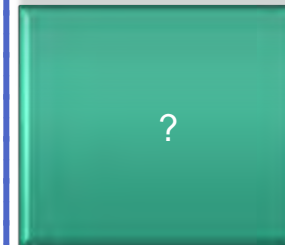
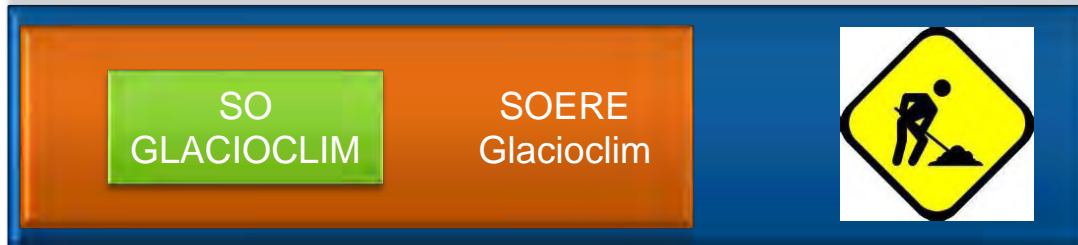


European  
RI

International  
Program



Cryosphere



WGMS  
GCW  
...



# Observation structures


## French National Structure

## European RI

## International Program

*Cryosphere*

SO GLACIOCLIM SOERE Glacioclim



?


WGMS  
GCW-WMO  
...



Label « Sud »  
LMI Great Ice  
JEAI «GRANT» & «IMAGE»

*Atmosphere*

SO CLAP SOERE ATMO IR ATMO 2016-2020



ACTRIS-ERI 2016-2020



GAW-WMO  
ACTRIS  
ACTRIS-2



Label « Sud »  
JEAI «CHARME»