

Studied glacier

Image Landsat
Data SIO, NOAA, U.S. Navy, NGA, GEBCO
US Dept of State Geographer
© 2015 INEGI

Google earth

A satellite image showing two volcanoes with glaciers. The larger volcano on the left has a prominent white glacier on its peak. The smaller volcano on the right also has a white glacier. The surrounding landscape is a mix of green and brown, indicating vegetation and rocky terrain.

«EL RUIZ» Glacier Volcano

«CONEJERAS» Glacier Volcano

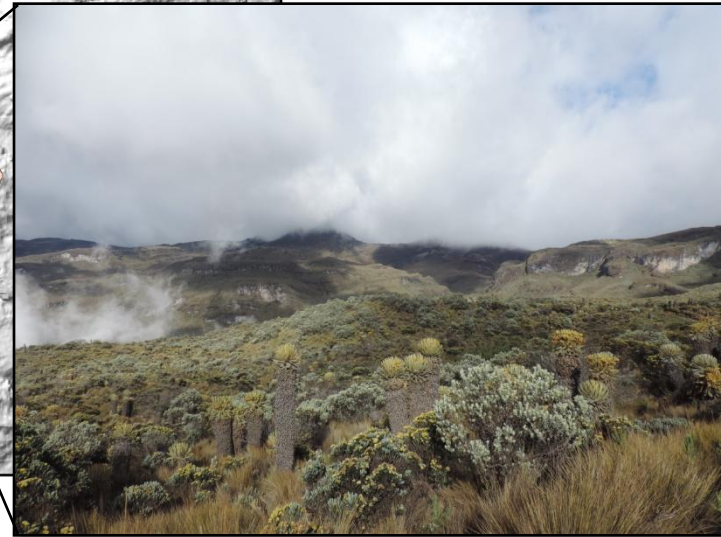
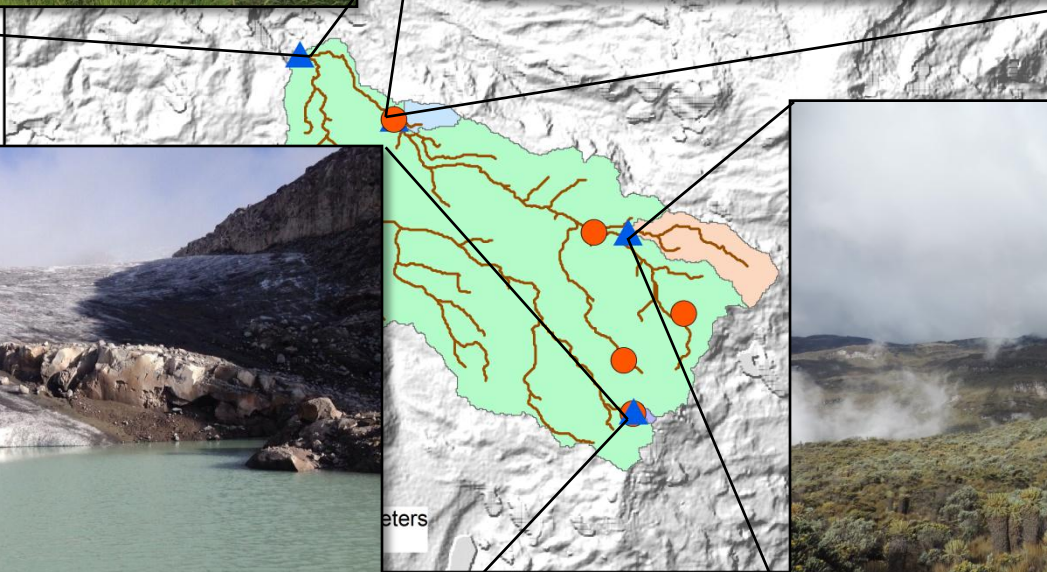
Image Landsat
Image © 2015 DigitalGlobe
Image © 2015 CNES / Astrium

Google earth

CUENCA DEL RÍO CLARO (CALDAS)



os Nev
cie: ~
nte: 27



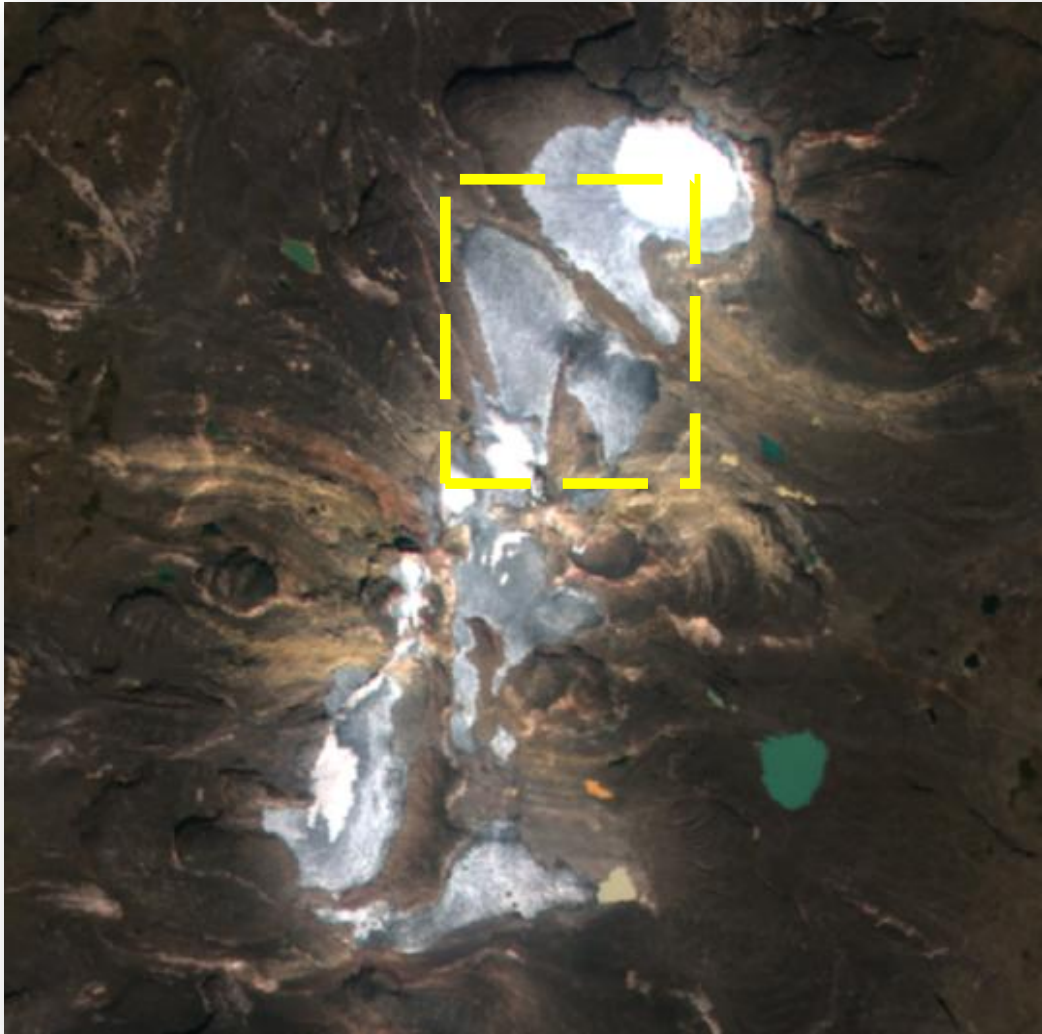
CAUDALES – SIETECUERALES (PÁRAMO)



BALANCE DE MASA GLACIAR – CONEJERAS (STA. ISABEL)

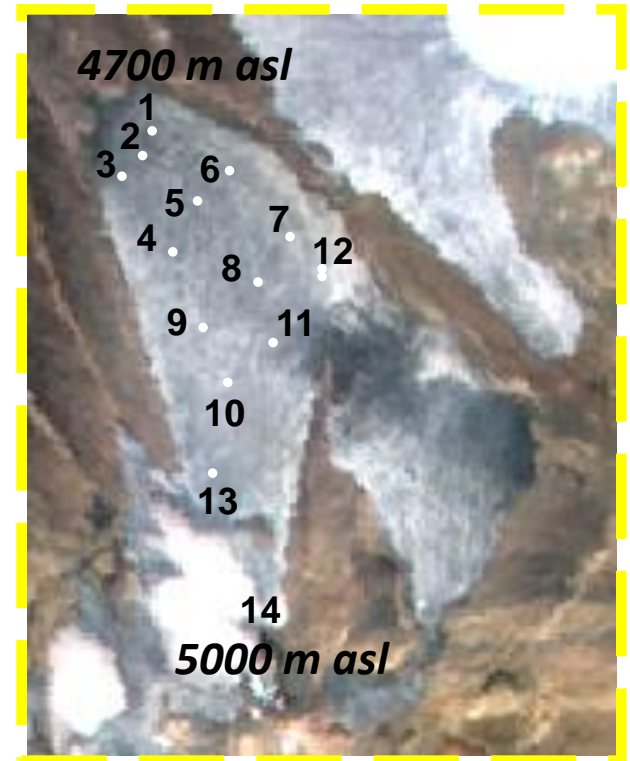


“CONEJERAS” GLACIER - SANTA ISABEL VOLCANO

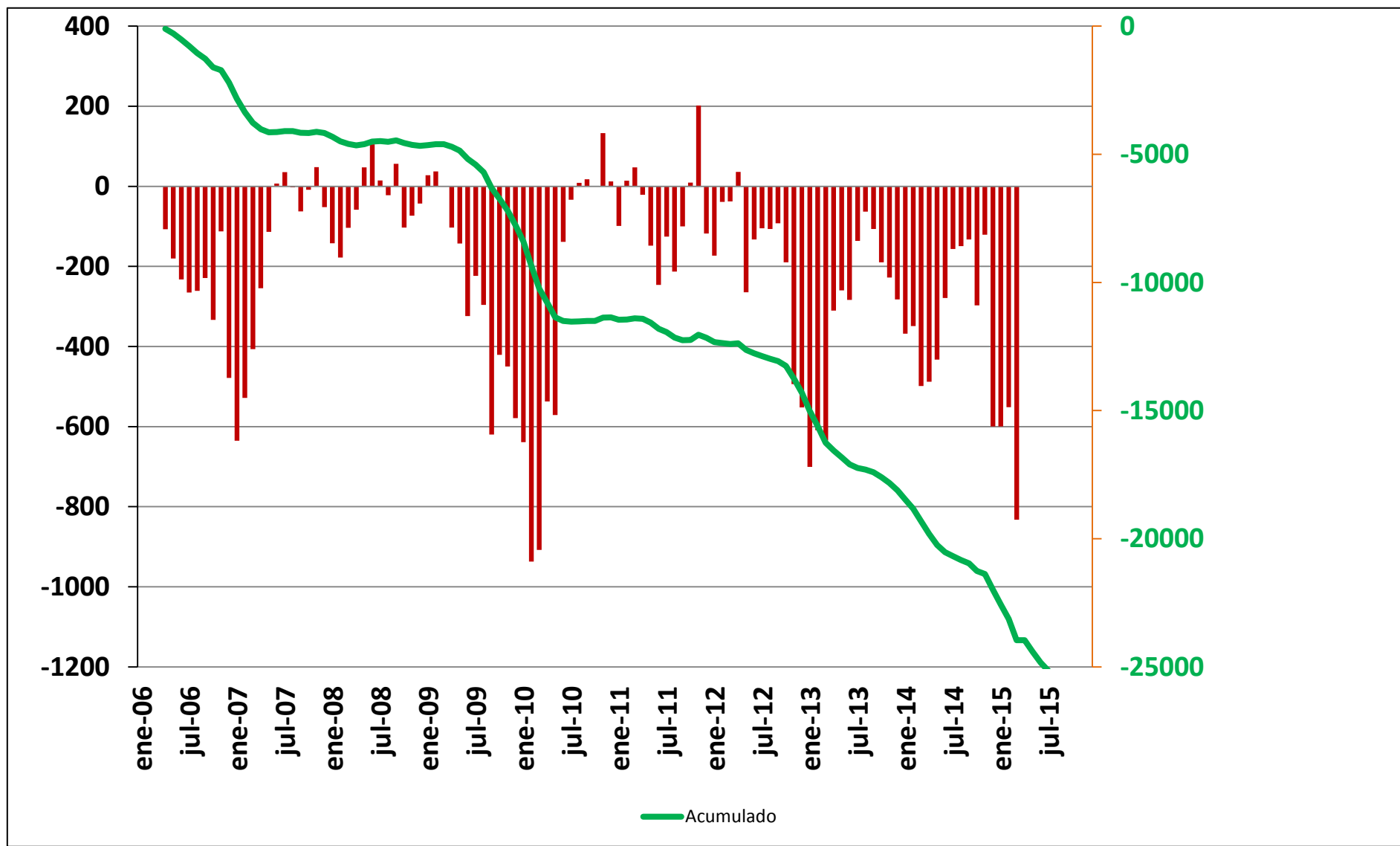


Total area = 1.8 Km²

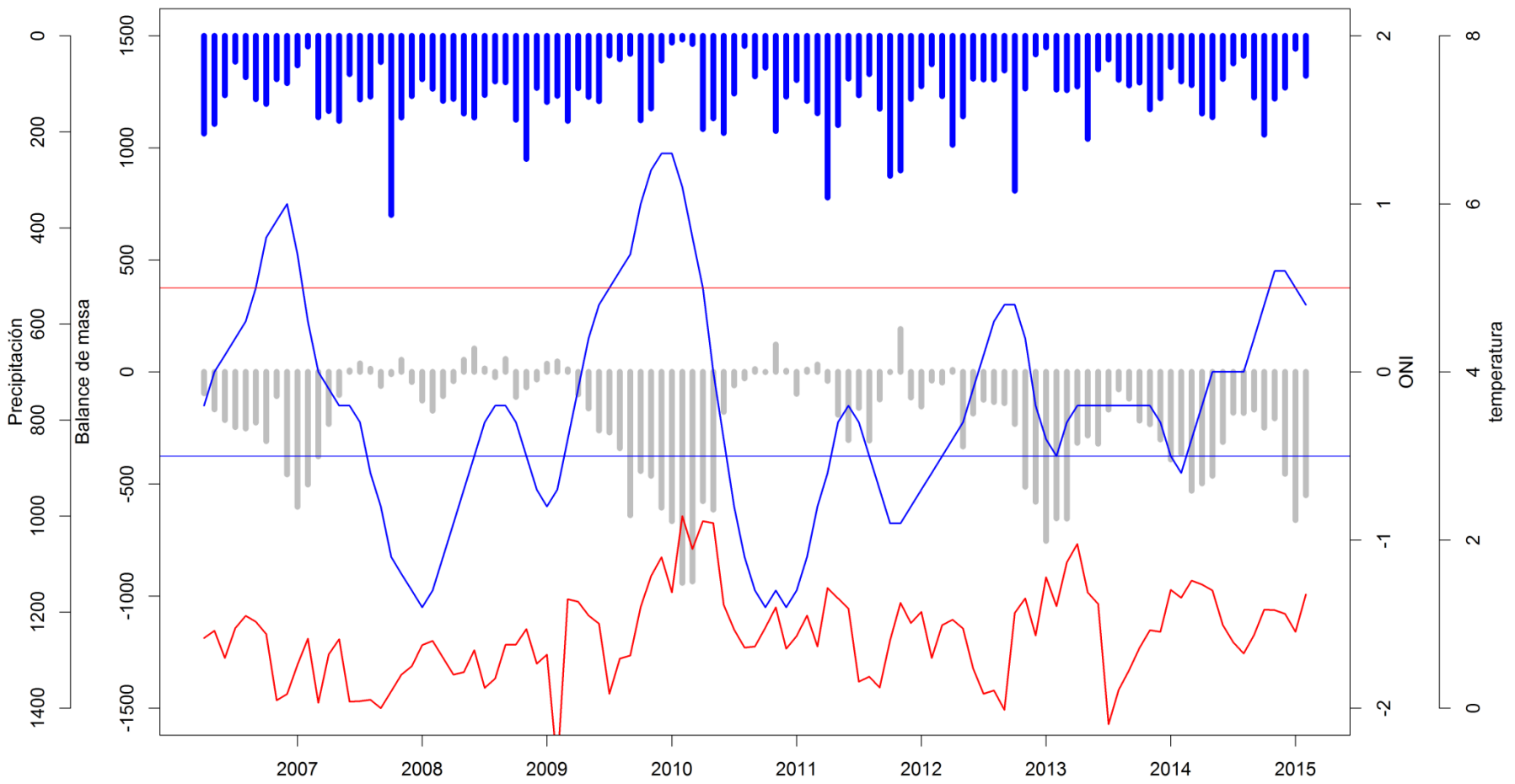
Studied area = 0.2 Km²



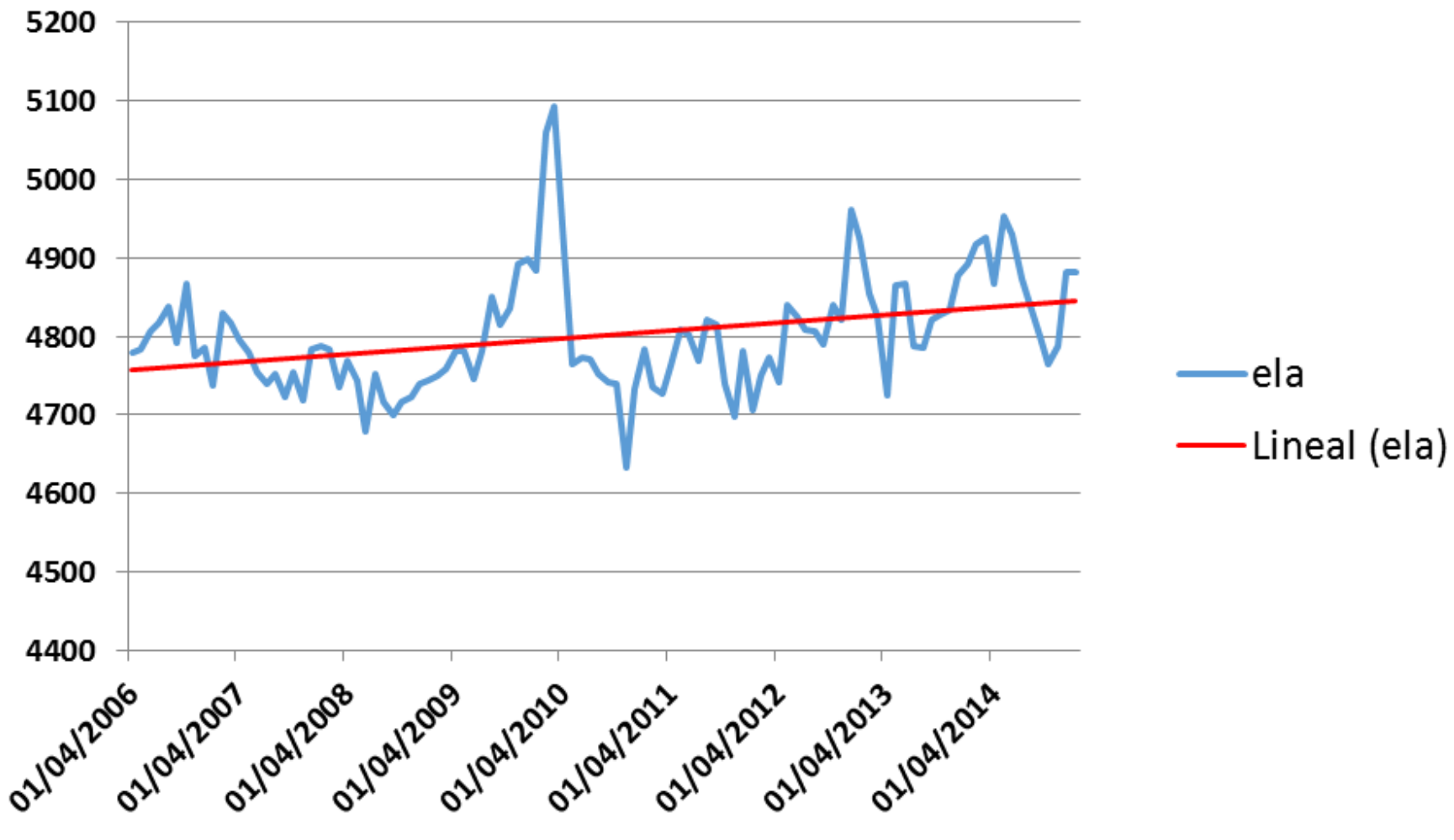
BALANCE DE MASA GLACIAR



BALANCE DE MASA ; ONI; PRECIPITACION; TEMP



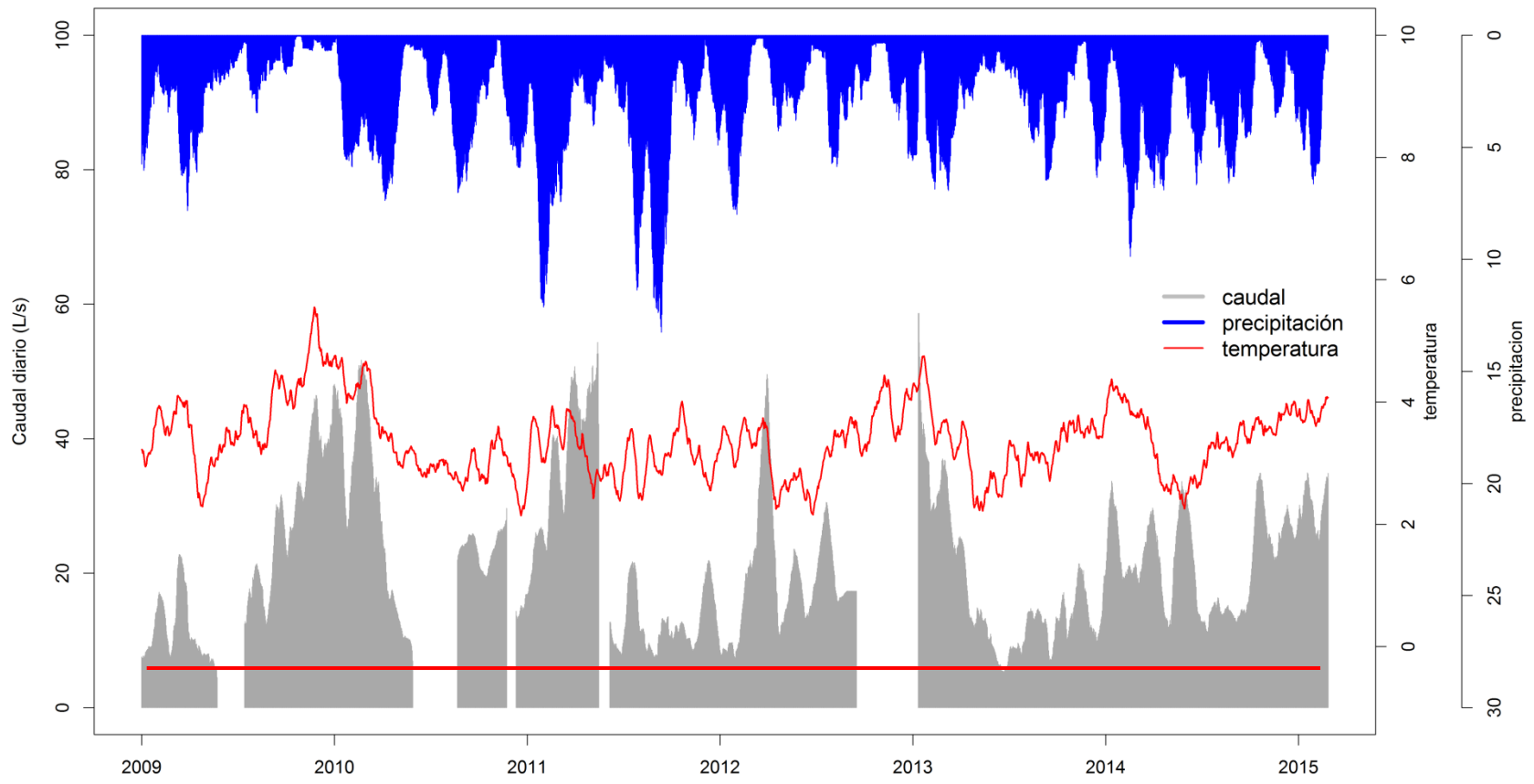
ELA



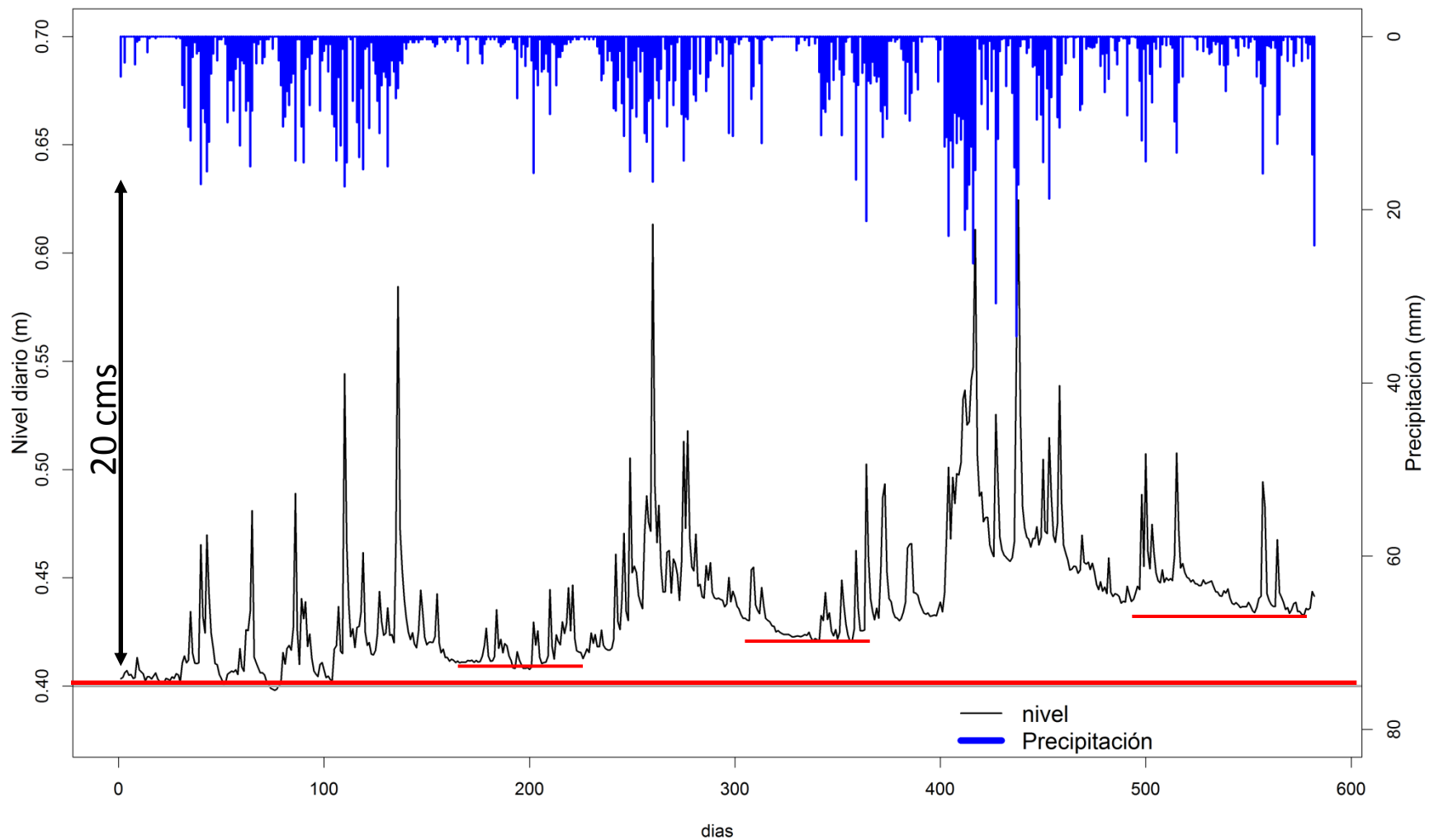
CAUDALES – CONEJERAS (salida del glaciar)



CAUDALES – CONEJERAS (salida del glaciar)



CAUDALES – SIETECUERALES (PÁRAMO)



CAUDALES – RÍO CLARO (TODA LA CUENCA)

