

Chengdu City 美丽的成都

Chengdu is centrally located in the western Sichuan Plain, with a history of over 2300 years. Covering an area of 12390 square km, Chengdu has a total population of over 10 million. Its city zone of is filled with long and wide avenues flanked by high-rise buildings.

成都自古为西南重镇，三国时为蜀汉国都，五代十国时为前蜀、后蜀都城，文化遗存丰富，成都有2300多年建城史。秦汉以来，成都就以农业、手工业兴盛和文化发达著称，历代都是中国西南地区的政治、经济、文化中心和长江流域的重要城市。南方丝绸之路的起点城市就是成都。



Surrounding Tourist Destinations 周边旅游景点

■ Jinli Ancient Street

Dating back to the Qin Dynasty (221-206 BC), the Jinli Street in Chengdu was one of the busiest commercial boulevards in the Kingdom of Shu, during the Three Kingdoms Period (220-280).

Due to the leadership of Zhuge Liang, the Three Kingdoms culture took strong roots here. There still exist some of the richest remains of the Three Kingdoms period.

锦里：锦里是西蜀历史上最古老、最具有商业气息的街道之一，早在秦汉、三国时期便闻名全国。锦里古街目前主要包括酒吧娱乐区、四川餐饮名小吃区、府第客栈区、特色旅游工艺品展销区等几大部分。锦里集旅游购物、休闲娱乐为一体，满足游客吃、住、行、游、购、娱的要求，定期举行丰富多彩的民俗文化活动，再现蜀地民俗文化，使游客充分体验四川民风民俗的独特魅力。



Surrounding Tourist Destinations 周边旅游景点

■ Jinsha Ruins

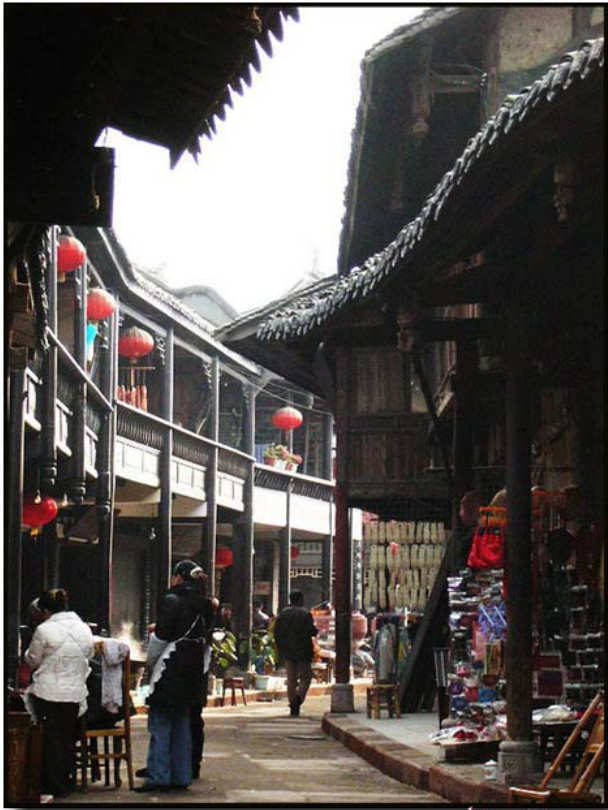
Archaeologists have made major discoveries in the Jinsha ruins in the western suburbs of Chengdu, the capital city of Southwest China's Sichuan Province. 130 precious relics including stone chimes, jade articles and gold belts dating back to the Shang Dynasty (1766-1050 BC) have been excavated in the four sites of the Jinsha ruins.

金沙遗址：被誉为二十一世纪中国首项重大考古发现的金沙遗址位于成都市西郊青羊大道。遗址代表了3000多年前的灿烂辉煌的古蜀文化。在出土的3000余件文物中，大都是工艺精美的金玉印饰品和翡翠饰品以及大量的陪葬陶器、象牙、龟壳和鹿角。栩栩如生的石刻雕塑形态独特，举世无双。



Surrounding Tourist Destinations 周边旅游景点

■ Huang Long Xi Ancient City 黄龙溪古镇风景区



by 斌

■ Wu Hou Temple 武侯祠

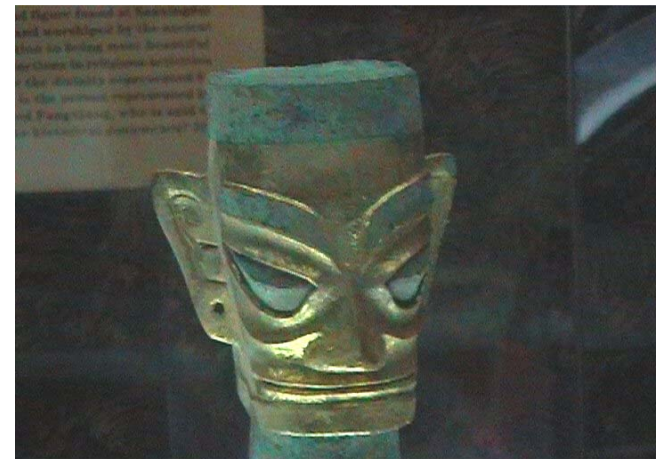


Surrounding Tourist Destinations 周边旅游景点

San Xin Dui Ancient City 三星堆

SanXing Dui Ancient City is the eldest and largest Shu ancient city found in China. SanXing Dui ancient city is a top attraction and is regarded as one of the biggest business cities of China.

距今4800~2800年的三星堆遗址为全国重点文物保护单位 AAAA级旅游景区，是迄今为止范围最广、延续时间最长，文化内涵最为丰富的古蜀文化遗址。



Surrounding Tourist Destinations 周边旅游景点

■ Xi Ling Snow Mountain 西岭雪山

Towering in Dayi County, 95 kilometers from Chengdu, the mountain range extends 484.8 square kilometers in area. It is a national scenic area known for its virgin forest and alpine landscape.

国家级风景名胜区西岭雪山，距成都市区仅95公里。您可领略云海、日出、阴阳界、日照金山、森林佛光等高山奇观



Surrounding Tourist Destinations 周边旅游景点

■ Qing Cheng Mountain 青城山

Qingcheng Mountain, the one of the birthplaces of Taoism, a place of an integration of the religious culture and natural scenery. 70 kilometers from Chengdu. In 2000, Qingcheng Mountain was listed in the UN Educational scientific and cultural Organization's List of World Heritage.

青城山景区以水秀、林幽、山雄、石怪为奇观的自然风景区。景区距成都70公里。景区内神秘溶洞、雄奇的盖华、秀丽的味江，罕见的古墓群和大蜀王遗址、名庵古寺。此处集山、水、洞、廊、林为一体，可与青城前山媲美。

