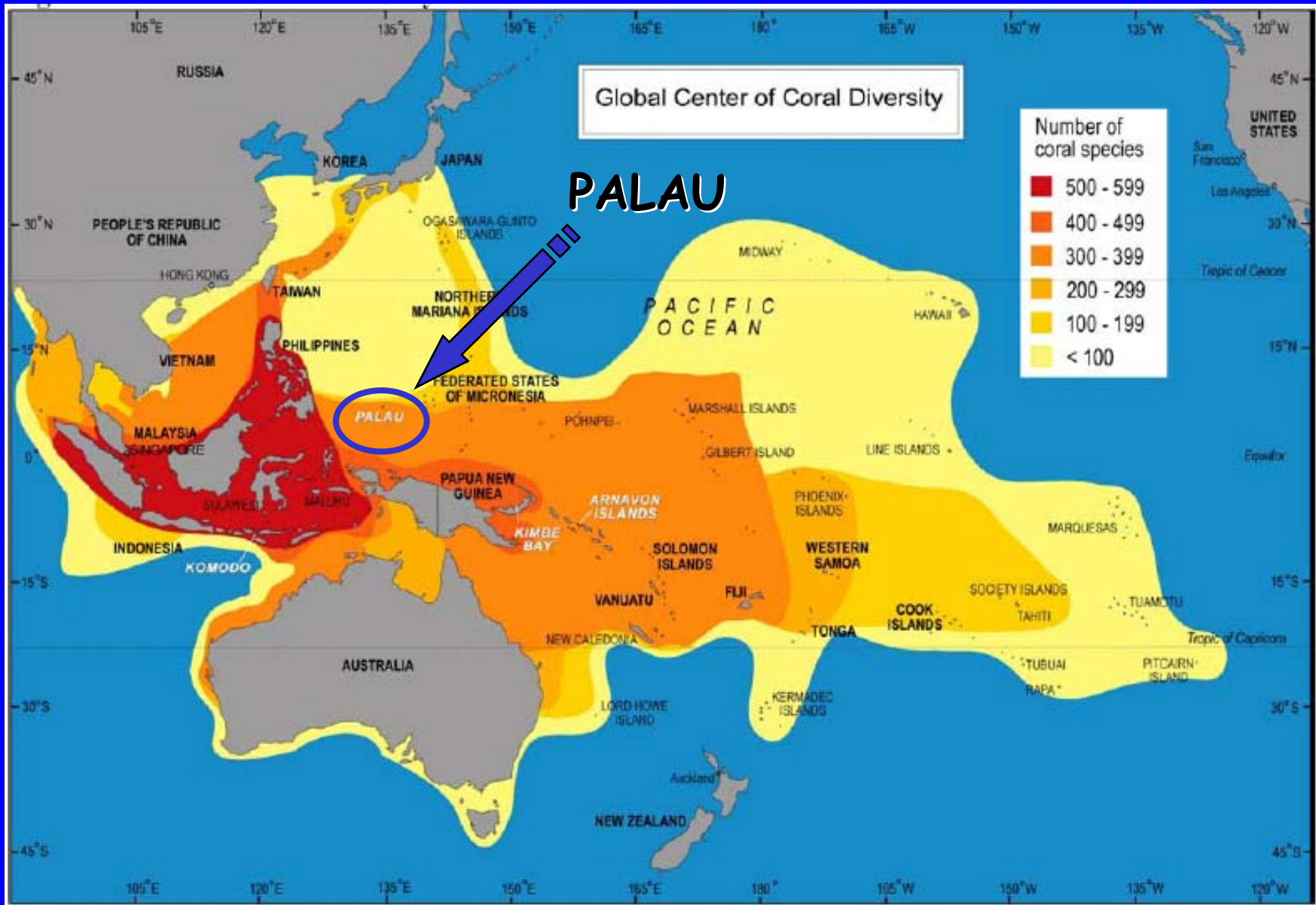


An aerial photograph of a tropical atoll. The image shows numerous small, dark green islands scattered across a vast expanse of water. The water's color transitions from a deep, dark blue in the open ocean to a lighter, turquoise blue near the islands, indicating shallow depths and coral reefs. The sky is a clear, bright blue with a few wispy white clouds. The overall scene is serene and picturesque.

Alii!

Bon Jour!

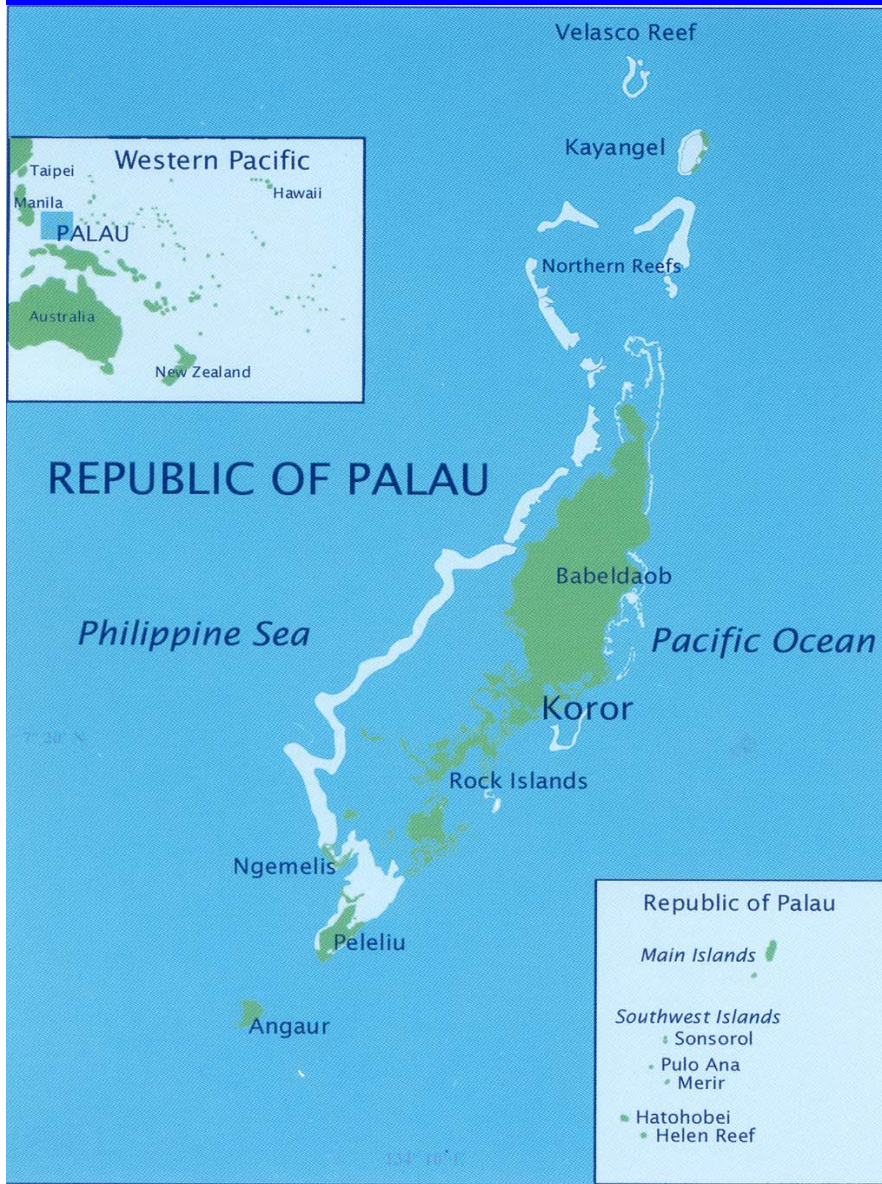
Hello!





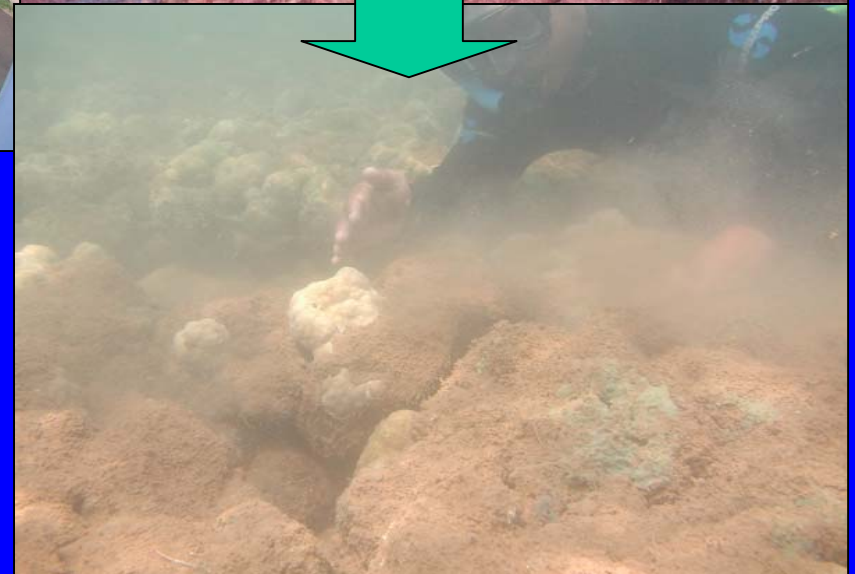
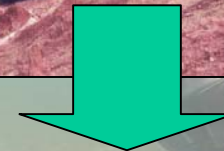
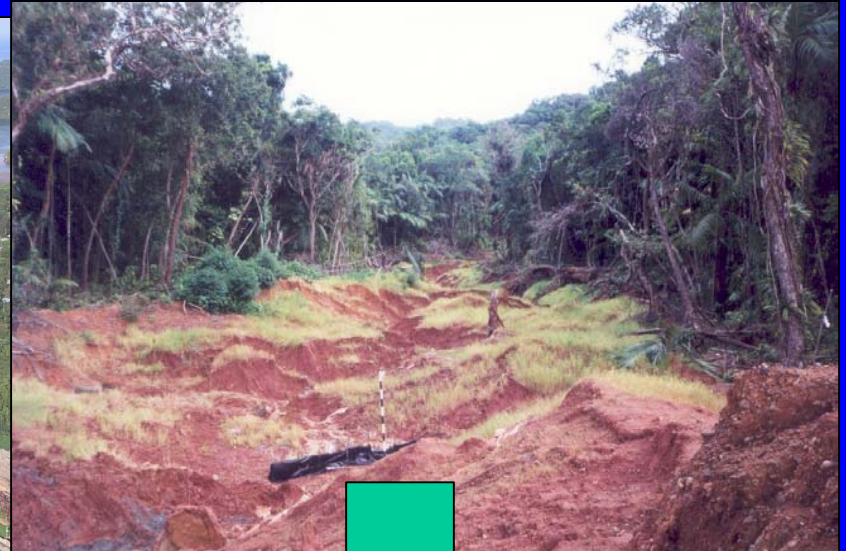


Where is Palau?



- Located in Western Pacific
- Part of "Micronesia"
- 13,000 Palauans
- 7,000 foreigners
- Over 500 islands
- Main island group stretches for about 150 km
- 700 km from northern-most atoll to southern-most atoll

Environmental challenges facing a young & progressive nation



Leading Community Concerns

- Economic Development
- Eroding Traditional Values and Leadership
- Rapid increases of foreign laborers
- Health Care
- Education
- Good Governance
- Environment
- Crime and Substance Abuse

1998 coral bleaching event...



...a wake-up call

Need to look internationally to address these global threats

Leading Community Concerns

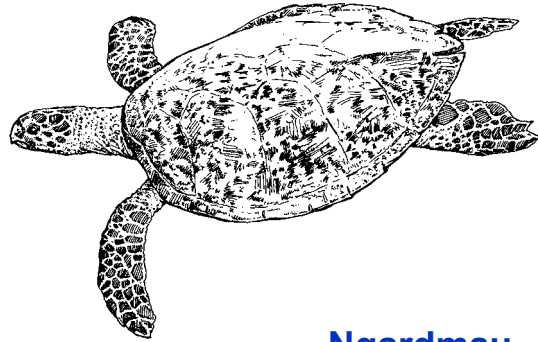
- Economic Development
- Eroding Traditional Values and Leadership
- Rapid increases of foreign laborers
- Health Care
- Education
- Good Governance
- Environment
- Crime and Substance Abuse



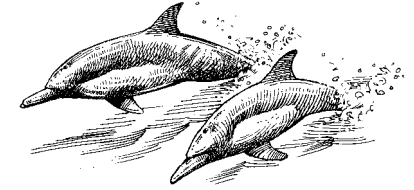
Extensive cultural & historical basis for management & conservation



21 protected areas



Ngeruangel Reserve



Northern Reef Channels Bul (8)

Ebiil CA

Ngardmau

- [Ngardmau Waterfall (Taki)]
- [Ngerchelchuus]
- Ngermasech CA

Ngaraard Mangrove CA

Ngem eduu Bay

Ngem ai Conservation Area

Lake Ngardok Nature Reserve

Rock Islands & Sthrn Lagoon Mgmt Area

- Ngerumekaol (State & National)
- Ngerukewid Islands (State & National)
- Ngemelis & Dmasch
- Ngkisaol Sardine Sanctuary
- Ngederrak Reef

Ngchesar

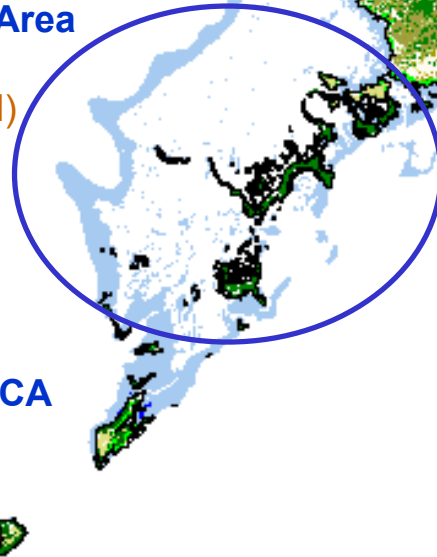
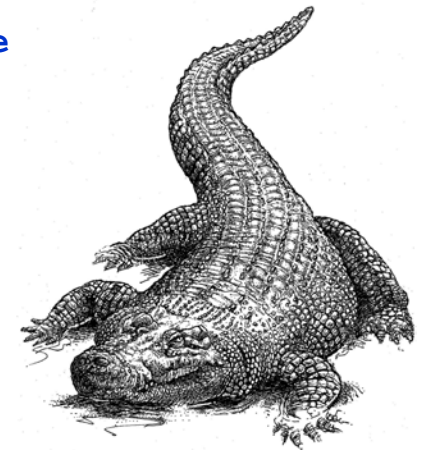
- Ngchesar Watershed CA
- Ngelukes CA

Airai Mangrove

Helen Reef



Tululeu CA



GROUPEL AGGREGATION MONITORING PROJECT

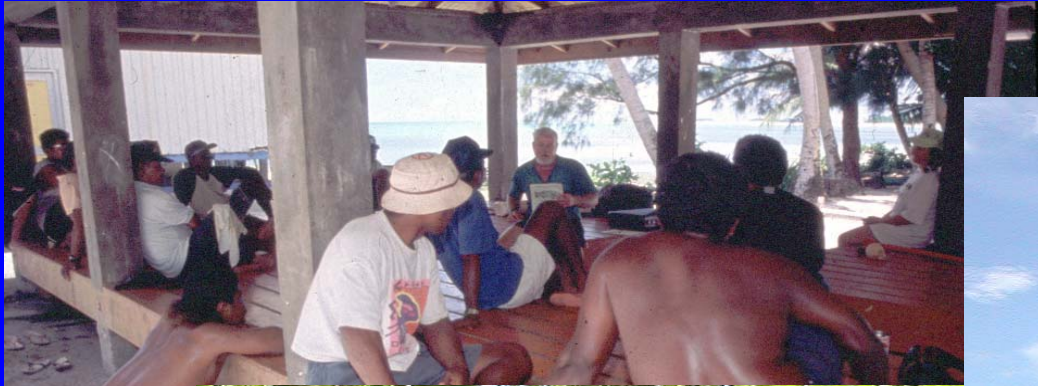
OBJECTIVES:

- To identify and monitor the spawning period
- To identify spawning sites
- To identify spawning sites for monitoring and to monitor the spawning period

PROJECT TEAM:

- Project Coordinator: Dr. J. J. Ebersole
- Project Manager: Dr. J. J. Ebersole and Dr. J. J. Ebersole
- Project Assistant: Dr. J. J. Ebersole






Communities at Their Best





“Ngdingemelel a Ititong e mult a dechel”

Great results have small beginnings.



"Mesulang"

Merci

Thank You