

Fostering school business partnerships in Manukau City, New Zealand



MAKING EDUCATION WORK FOR MANUKAU

Presenter: Sarah Harvey
Manukau City NEW ZEALAND

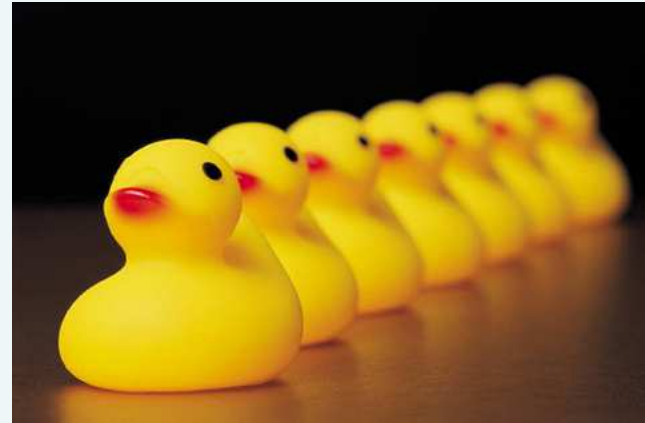


City of Manukau Education Trust



Major Sponsors





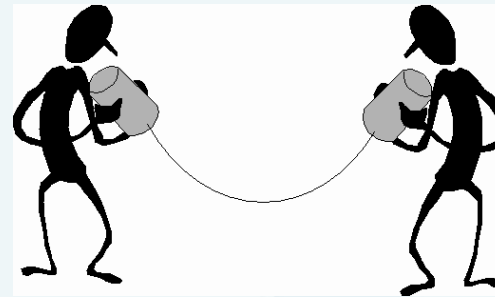
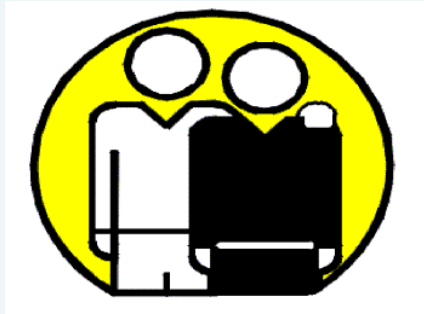
Working together:

Working together with our local community (schools, ECE) and our local businesses

Leadership:

Providing opportunities for educational networking and communications in Manukau City eg PFAD, EFAD, E4E





Advocacy:

to support and encourage our community to get involved and the importance of relationship-based learning. Initiate and develop forums, conference opportunities or seminars to share information and increase public and community awareness of issues relevant to our city

Facilitaiton/ Coordination:

Develop capacity and capability to provide facilitation and coordination of education activities in Manukau.

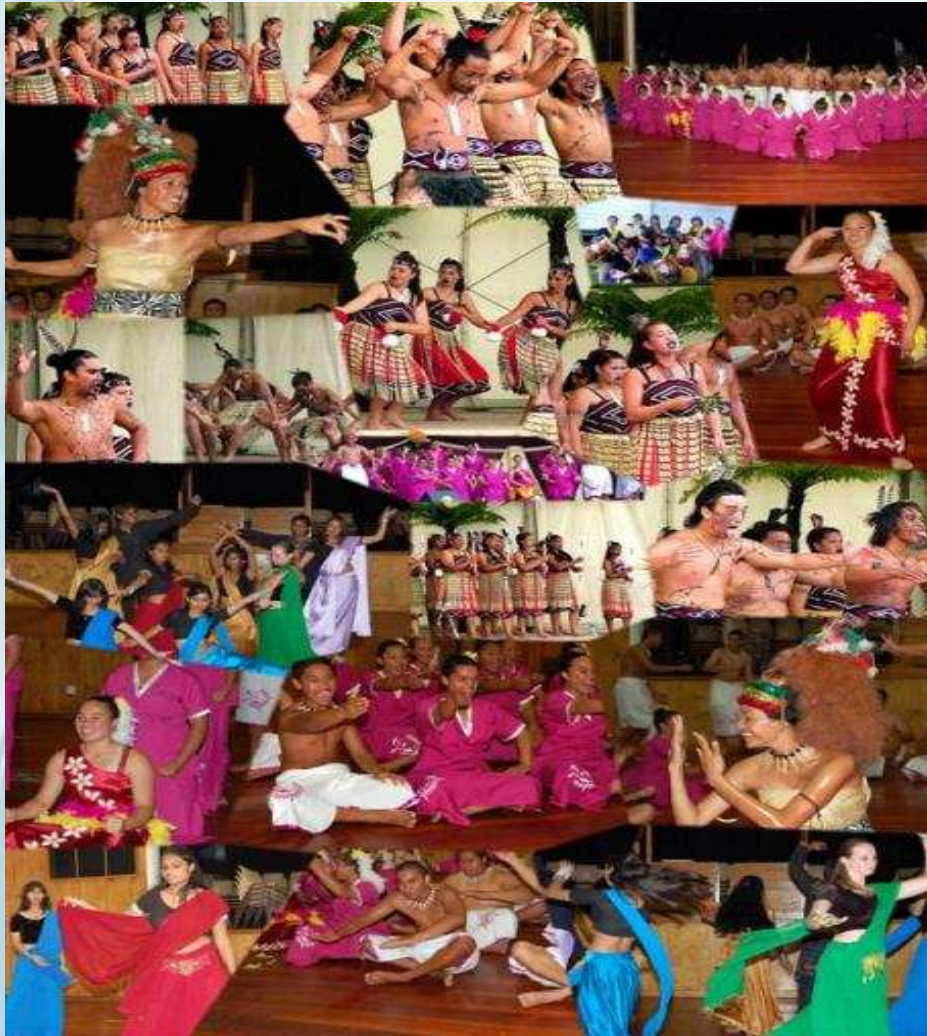
We run 5 projects at COMET, each has a Project Manager and a staff member facilitating the school/ business/ community links.





Manukau City is located in the North island of NZ , approx 30km south of CBD





Point of Difference

Third largest city in Auckland – and one of the fastest growing cities

Manukau City has the largest Pacific Island community– IN NEW ZEALAND

Multicultural Mix – HOME TO MORE THAN 165 DIFFERENT ETHNIC GROUPS , with a multi mix of people from Samoa, Tonga, Fiji, Rarotonga) now residing here in this city
Low socio-economic community with a very young city

Opportunities – local businesses have an interest to work in this region to help support and motivate the younger generation. Businesses are interested in working with manukau schools – as part of their community social responsibilities (built into strategic plans)

Within the wider Manukau region, COMET works alongside 95 Primary schools and 40 Secondary schools; as well as business and community partners.

COMET



MAKING EDUCATION WORK FOR MANUKAU CITY OF MANUKAU EDUCATION TRUST

COMET Projects



- **Manukau Family Literacy Project**

The Manukau Family Literacy Programme is an intergenerational programme. A significant adult from a family (eg mother/father/grandparent) enrolls in an adult education class that is based at the same educational site as their child.

Smart Centres

The project is designed to support the achievement of goals for the use of INFORMATION AND COMMUNICATIONS TECHNOLOGY (ICT) in early childhood centres.

Early Childhood

- Major focus of COMETs work as there is a shortage of Early Childhood Centres, and a lack of quality and culturally appropriate facilities in the region.



Principal for a Day

The COMET PFAD has been going for 6 years.

COMET leads the Principal for a Day event in August each year.

Community and business leaders spend a day shadowing a school principal exploring leadership and organisational management from an educators perspective. The purpose of the day is to build community understanding of leadership in Manukau schools and to establish on-going relationships between schools and businesses.

This is a unique Manukau city event, and only takes place in this region of NZ.



Project Objectives (PFAD):

- To allow businesses and education leaders to work side-by-side and to have dialogue over key management issues
- To provide a context of a business understanding of what goes on in schools and how schools operate in the Manukau region
- To provide profile and support to the notion of the importance of school business relationships



Project Facilitation:

- Notification of PFAD event
- Schools/Business
- Registration Form
- Coordinating partnerships
- Letters to Principals and PFADS
- Principal for a Day (The Day)
- The Civic Function
- Evaluation Form



Principals say:

“Very positive interaction and an opportunity to get an outside perspective from the business world”

“I thoroughly enjoyed finding common ground with the PFAD in respect to leadership issues. I also enjoyed feedback as an external (to education) professional”

Principals for a Day (i.e. CEOs, General Managers) say:

“Particularly valuable open and frank discussion on the school organisation and the way in which business and schools are similar in many ways, for example dealing with staff”

“Enjoyed talking about the Education strategy and the similar role of a manager of a bank and principal of a school”



Executive for a Day



The Executive for a Day events aims to build relationships and connections between school and the corporate/business communities. The day involves Principals and/or Deputy Principals (aspiring to the principalship) to work alongside the CEO and senior managers within the organisation. The key educational issues and management strategies on human resources, financial management, marketing and public relations, organisational culture and leadership are discussed and debated during the day



Project Objectives (EFAD):

- Aims to build relationships and connections between the education sector and stakeholders in business/employer communications
- Opportunity for school principals to work alongside CEOs/Managers within a working environment
- Opportunity to exchange and have dialogue on key management matters



Project Facilitation:

- Business/Community engagement
- Contacting Schools
- EFAD Registration
- Personal follow up/Programme
- Evaluation form



“Principals say:

“Enjoyed the discussion about company culture, the type of thinking, skills required by staff and I was able to make comparisons and relate to my own school culture”

“Interesting to see how a ‘real company’ utilises people skills and thinking skills. Reinforced my own thoughts and the importance of communications”

CEOs/ General Managers say:

Arranged opportunity for students to visit the local business/organisation to get an understanding of what we do”

“Effective way to foster relationships between school and business for the future”



Education for Enterprise



This is a new and challenging project (supported by the Ministry of Education and NZ Trade and Enterprise) which aims to enhance the delivery of the curriculum in schools, by engaging students to ensure their learning is relevant and that they are developed as enterprising individuals. The project looks at developing and fostering partnerships and links within the local business community and schools.

The E4E (Education for Enterprise) project is about building school, business and community partnerships that engages students into real-life authentic learning activities. The project is about students developing enterprising skills (decision making, risk taking, team work, effective communication etc) through real life partnerships so that when students leave college, they are equip with enterprising skills that they can then use in their work.

Currently there are 5 schools that make up the Manukau cluster.



Project Objectives (E4E):

- To build and create a dynamic learning process that develops enterprising students
- To reinforce that enterprising learning is relevant and authentic
- To emphasise that community partnerships and networking are central to enterprising learning



Project Facilitation:

- School commitment
- Assign a Lead Teacher
- Business/Community engagement
- Project facilitation
- Media Coverage
- Professional Development
- Cell Teachers
- Business Expos/ Community meetings



Teachers say:

“It is essential that learning is authentic. It is exactly what teaching and learning is about”

“It gives students the opportunity to experience a taste of the real work but doing it in a structured and safe way

Business/Community project partners say:

“The students got to carry out a class room exercise in a real life situation and had to communicate with members of the public in a responsible way”

Students say:

“Students involved in organising and managing”

“Leadership skills – designating specific responsibilities within the classroom”



Concluding remarks



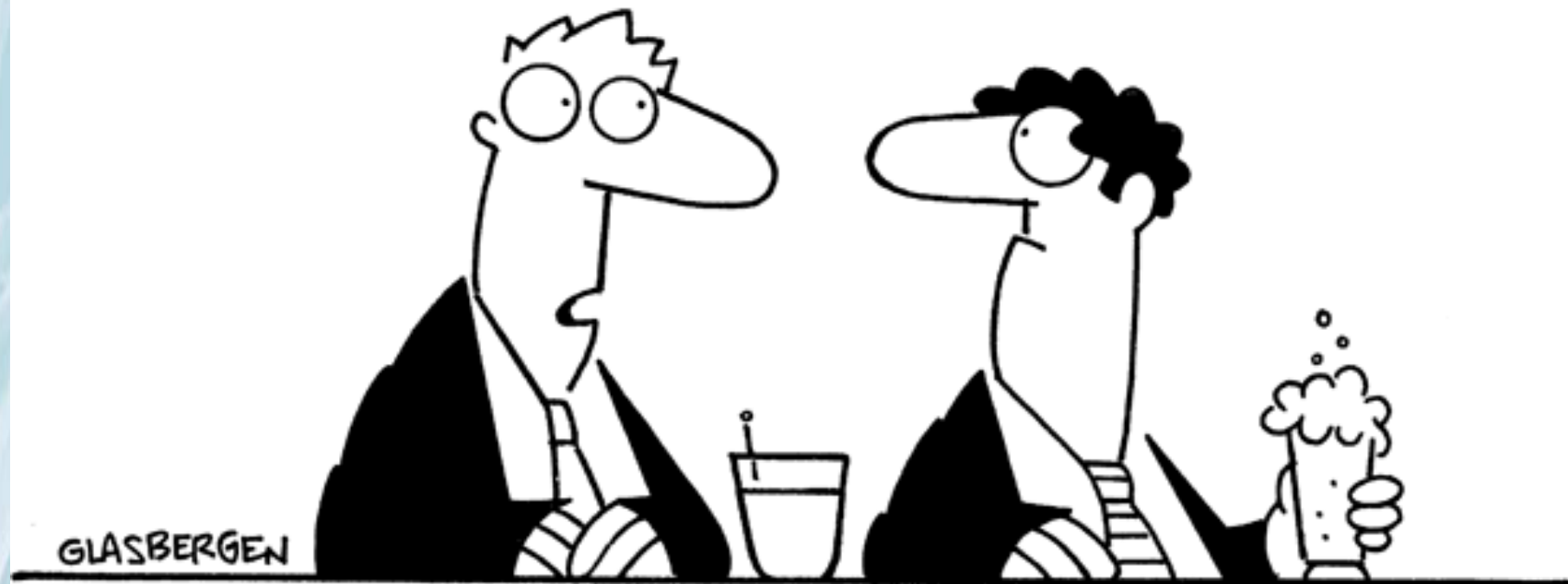
Going to leave with a Whakatauki
– that COMET has adopted as its
proverb:

The tapestry of understanding can
not be woven by one strand alone,
Only by the working together of
strands and working together of
weavers
Will such a tapestry be completed.

With its completion
Let us look at the good that comes
from it
And, in time,
We should also look
At those stitches which have been
dropped
Because hey also have a
message.



Copyright 2005 by Randy Glasbergen.
www.glasbergen.com



“While I was thinking outside of the box, someone changed the password and now I can’t get back in!”

COMET



MAKING EDUCATION WORK FOR HANUKAU CITY OF MANUKAU EDUCATION TRUST