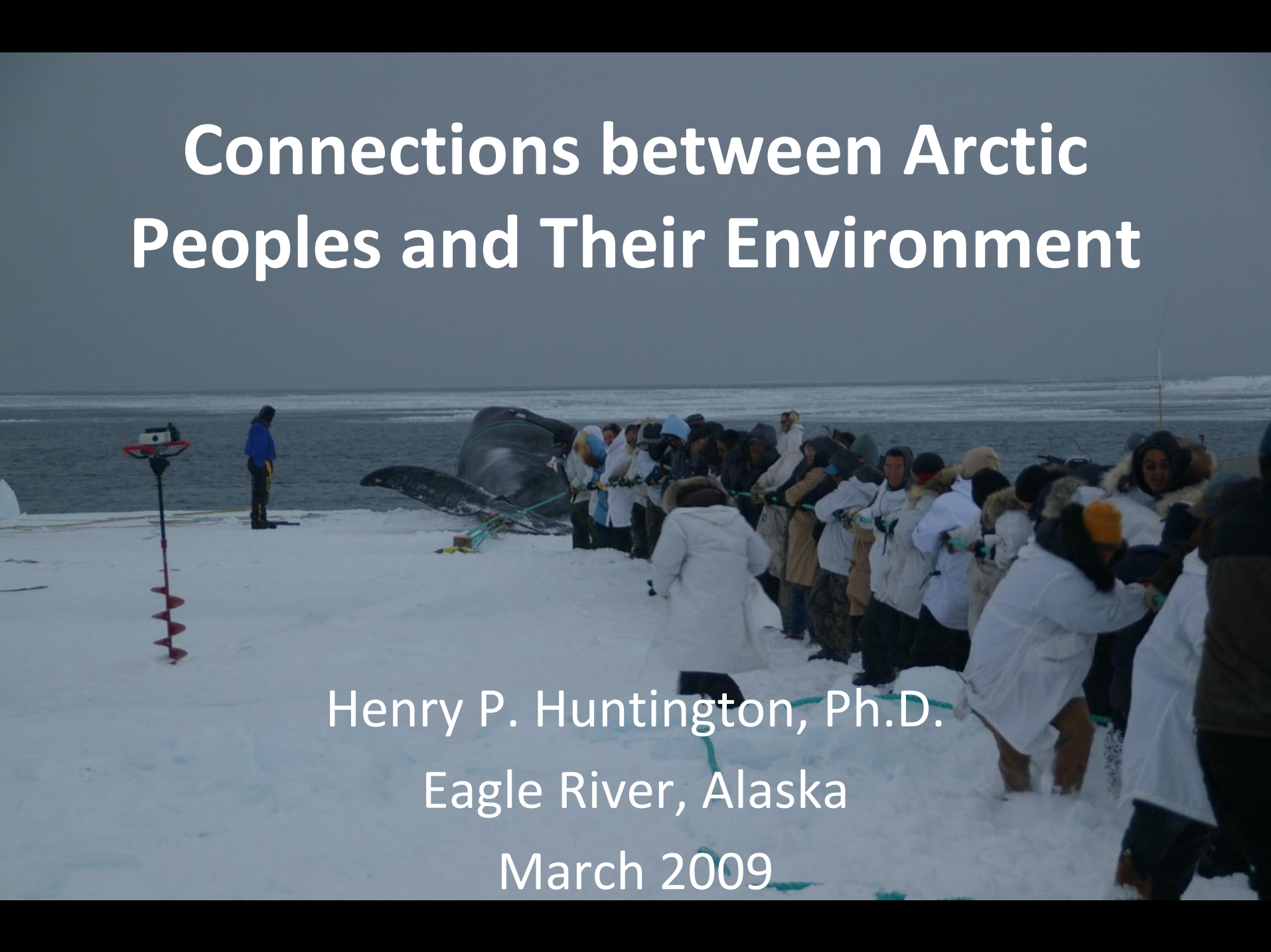


Connections between Arctic Peoples and Their Environment

Henry P. Huntington, Ph.D.

Eagle River, Alaska

March 2009







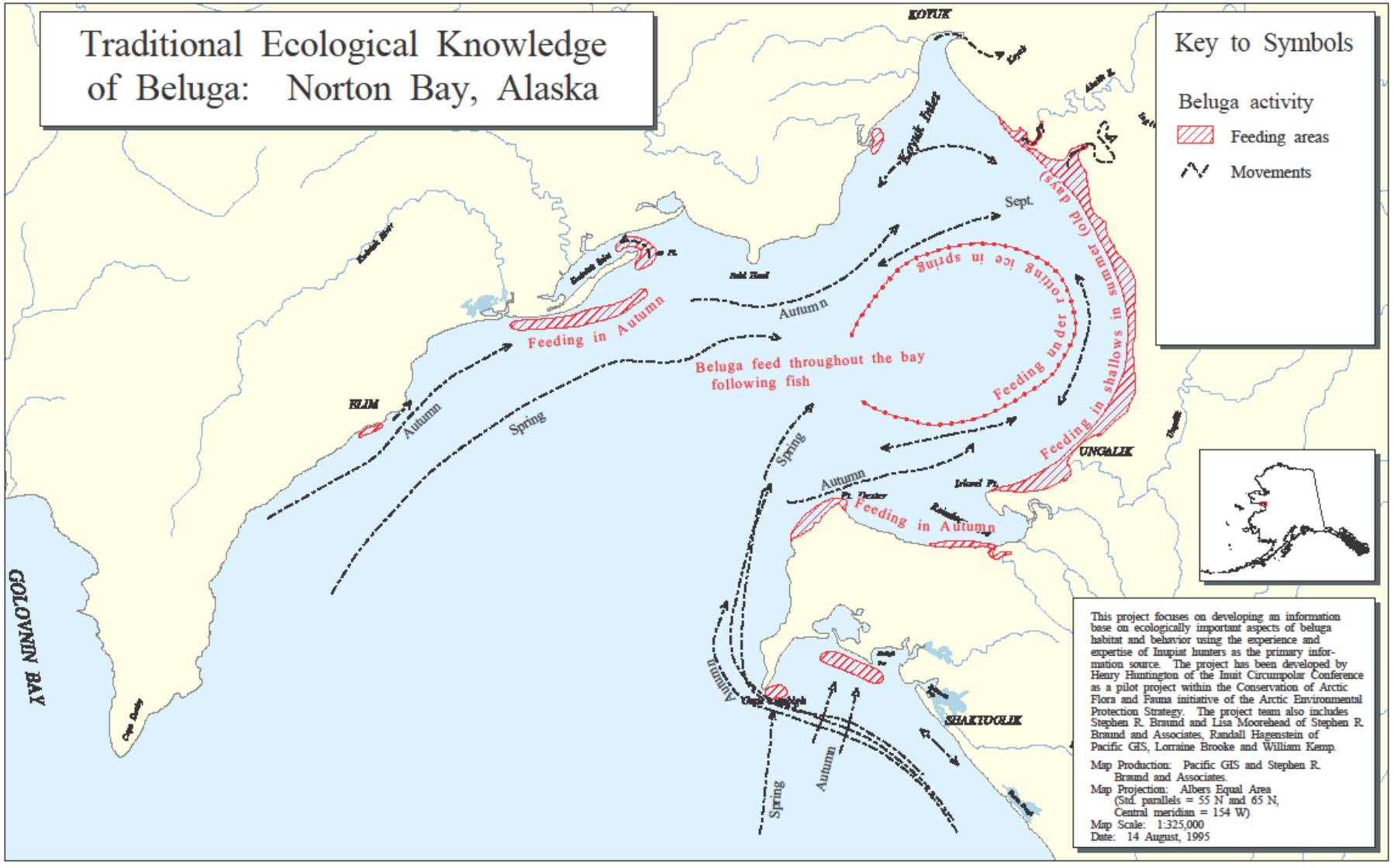




Traditional Ecological Knowledge of Beluga: Norton Bay, Alaska

Key to Symbols

- Beluga activity
-  Feeding areas
 -  Movements



This project focuses on developing an information base on ecologically important aspects of beluga habitat and behavior using the experience and expertise of Inupiat hunters as the primary information source. The project has been developed by Henry Huntington of the Inuit Circumpolar Conference as a pilot project within the Conservation of Arctic Flora and Fauna initiative of the Arctic Environmental Protection Strategy. The project team also includes Stephen R. Braund and Lisa Moorehead of Stephen R. Braund and Associates, Randall Hagenstein of Pacific GIS, Lorraine Brooke and William Kemp.

Map Production: Pacific GIS and Stephen R. Braund and Associates.
 Map Projection: Albers Equal Area
 (Std. parallels = 55 N and 65 N, Central meridian = 154 W)
 Map Scale: 1:325,000
 Date: 14 August, 1995













