



Southeast Asia Primary Learning Metrics (SEA-PLM)



Overview



1. Rationale, purpose & methodological approach
2. Current status of SEA-PLM
3. Development of programme logic
4. Global, regional and organisational priorities
5. Geographic roll out, target population & filling gap
6. Organizational structure
7. Emphasis on national priorities & sectoral impact
8. Key moments
9. Concluding thoughts



Rationale & purpose



- To describe the evolution of the major new regional assessment – Southeast Asia Primary Learning Metrics (SEA-PLM)
- To identify and analyse the key factors that affected its evolution (2012-2015) and the critical factors which must be considered when developing a regional metric
- To describe the need for a regional metric and the need to ensure the utility at the Country level and how the managers have responded to such challenges



Methodological approach



- Participant observer
- Documentation analysis from key moments in development of SEA-PLM
- External debates in which authors were engaged including assessment consultations at UNESCO Paris, February 2015



SEA-PLM Vision



“SEA-PLM will contribute towards improving and redefining learning outcomes by providing a regional culturally appropriate metric and thereby towards a more equitable and meaningful education for all children across the region”



Project Outcomes



1. Enhanced capacity to generate and analyse assessment data at regional, national and sub-national levels
2. Enhanced capacity to utilise assessment data for education improvement and more equitable learning outcomes at regional, national and sub-national levels
3. Enhanced ASEAN integration in terms of approaches to assessment, with initial focus on Primary Grade 5 in the domains of literacy (reading & writing), numeracy (mathematics) and global citizenship



Unique Features



- The only assessment at regional scale designed to measure progress in relation to the values and curricula of the Southeast Asian region
- First assessment in the world to assess writing across languages
- The only assessment in region to date to assess foundations of global citizenship and Southeast Asian values



Factors affecting programme logic development



From 2012: Thematic focus influenced by global developments, including Learning Metric Task Force (LMTF):

- Literacy: Reading & writing
- Numeracy: Mathematics
- Global citizenship



Factors affecting programme logic development (contd.)



Regional Post-2015 Agenda:

Bangkok Statement: “Quality in education will be supported also by learning environments that are safe, healthy, gender-sensitive, inclusive and conducive to learning, mother tongue-based multilingual education and comprehensive monitoring and quality assurance systems”



Factors affecting programme logic development (contd.)

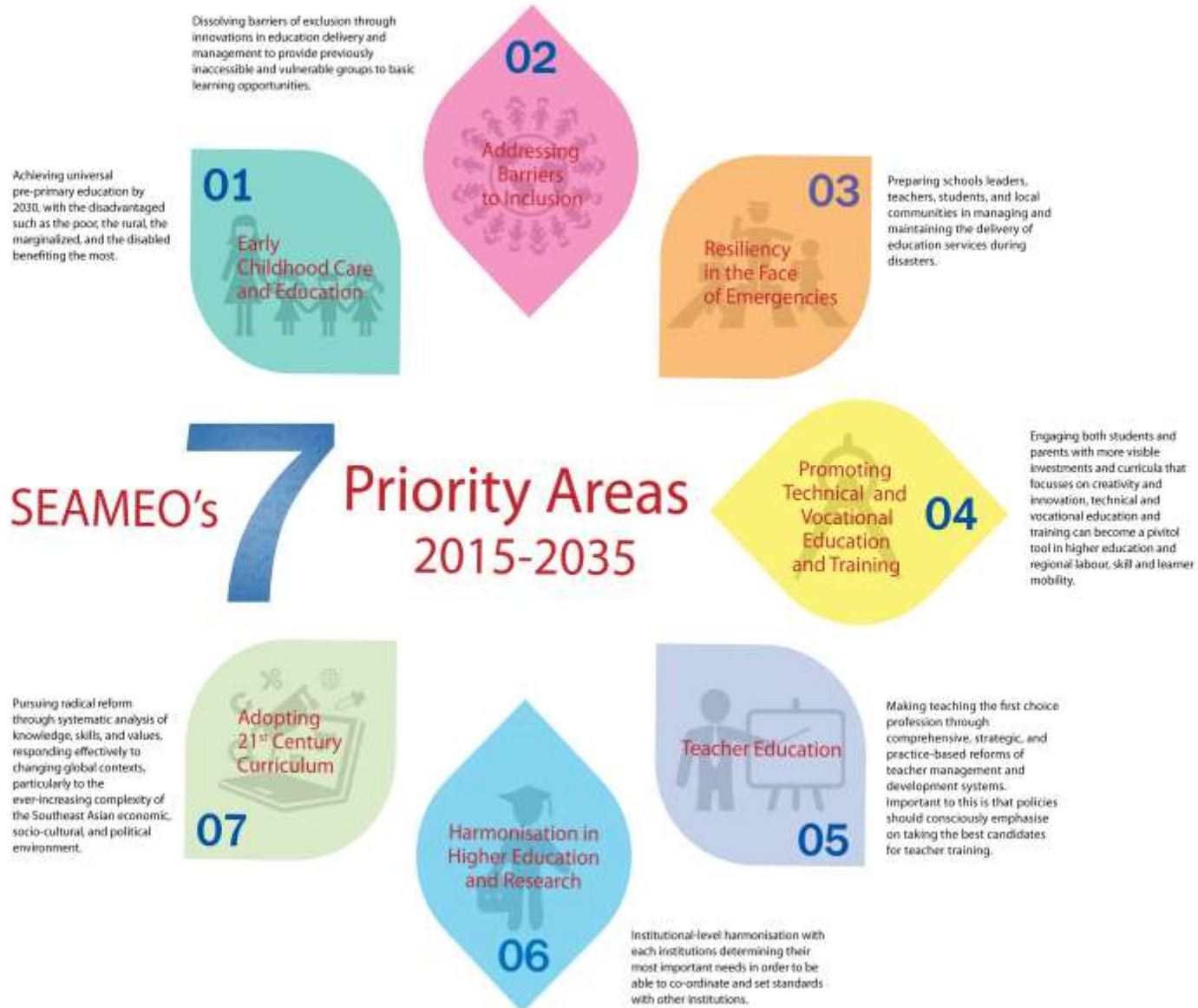


Global Post-2015 Agenda:

WEF Declaration: “We commit to quality education and to improving learning outcomes, which requires strengthening inputs, processes and measuring progress”



SEAMEO's 7 Priority Areas



UNICEF East Asia and Pacific: Priority Areas



- Aim: Strengthen equity agenda and include learning outcomes in the equity analysis
- UNICEF EAP: “Enhanced access to inclusive and quality learning for all children”
- Indicator: “Number of countries utilizing data derived from the Southeast Asia Primary Learning Metrics to inform policies”
- Linked to OOSC, inclusive education, minimum standards, teacher education & curriculum reform



Geographic roll out



2020: A regional metric for all SEAMEO and ASEAN Member Countries

2016 – 2017: At least 6 SEAMEO Member Countries will have done field trials and main surveys, including: Brunei Darussalam, Cambodia, Lao PDR and Myanmar





Target population – starting with Primary Grade 5



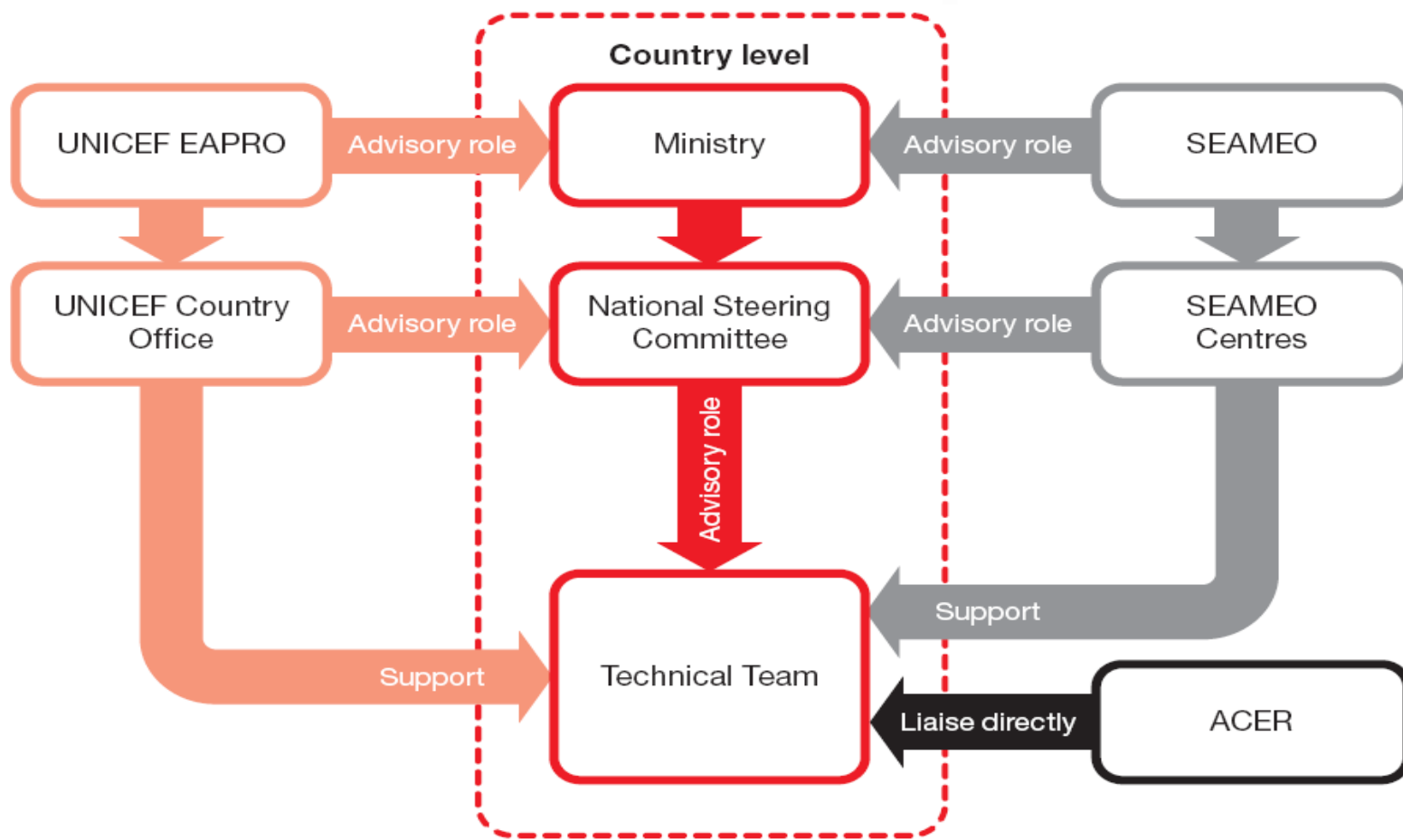
Filling the gap

PIRLS, PISA, TIMSS, and EGRA have global presence ...



... whereas others have had a regional focus

Current organizational structure



Emphasis on national priorities and sectoral impact



- Political commitment is required at all levels in the development and roll out
- Need to link to broader capacity building in assessment and education improvement
- Timing of the survey in relation to other Government's commitments to assessment
- Ensuring SEA-PLM analysis will support development and improvement of standards for all children



Key moments of SEA-PLM



35th SEAMEO High Officials Meeting (HOM) (Nov. 2012)

Proposal on development of SEA-PLM & Plan for Phase I to be completed in 2013 was presented and endorsed

47th SEAMEO Council Conference (SEAMEC) (March 2013)

SEAMEO Council of Ministers approved the concept note and plan to complete Phase I in 2013 and to propose Phase II at 36th SEAMEO HOM

Working Group established (Beginning of 2013)

Members: SEAMEO Secretariat, SEAMEO INNOTECH, UNICEF EAPRO, UNESCO (UIS and EPR Units), ACER, UN ESCAP Statistics Division

Regional Experts Reference Group (RERG) established (September 2013)

RERG convened a Regional Expert Seminar on 24-26 September, 2013

Desk Review Completed (December 2013)

- SEAMEO INNOTECH: Primary school curricula in Southeast Asian Countries
- ACER: Experiences with primary learning metrics – and with PISA and TIMMS – in the region

36th SEAMEO High Officials Meeting (February 2014)

- Progress on Phase I was presented and full endorsement of plan for Phase II was given
- Proposed candidates for Phase 2: Brunei Darussalam, Lao PDR, Malaysia, Philippines & Thailand



Key moments of SEA-PLM (contd.)



- SEAMEO Centre Directors Meeting (CDM) 2014 (June 2014)
- SEAMEO Executive Committee (EC) Meeting (Aug. 2014)

- **Launching Ceremony of SEA-PLM (Oct. 2014)**

- ACER was recruited (Oct. 2014)
- SEA-PLM Regional Consultative Meeting (4-5 Nov. 2014, SEAMEO RECSAM)

- **37th HOM (Nov. 2014)**
Updates on the implementation of SEA-PLM was presented

- **Domain Technical Review Panels (DTRP) Meeting (Feb. 2015)**
Draft framework was developed: Reading & writing; mathematics; & global citizenship

- **48th SEAMEC (May 2015)**
Updates on the implementation of SEA-PLM was presented and the SEAMEO Council expressed support

- **Country Visits to Cambodia (Feb. 2015), Lao PDR (March 2015), Brunei Darussalam (May 2015) & Myanmar (Oct. 2015)**

- **Item Development Workshop (June 2015)**

- Test items were developed: Reading & writing; & mathematics
- Items for questionnaires: Global citizenship; students; teachers; principals; & parents

- **In other SEAMEO Meetings (e.g. HOF, GBM)**
Updates on the implementation of SEA-PLM were presented

- **Field Operations Planning and Data Management Workshop (Aug. 2015)**
Field trial
Countries: Brunei Darussalam, Cambodia, Lao PDR & Myanmar

- **First Field Trial in Brunei Darussalam (Nov. 2015)**



Concluding thoughts – conditions of success



- Strong political leadership
- Strong political commitment
- Comprehensive communication strategy
- Capacity development
- Accommodation to Government priorities & planning cycles
- Clear and coherent coordination mechanism
- High quality and predictable technical leadership (ACER) to ensure survey meets international standards
- Commitment to utilization of the data
- Adequate and predictable funding



QUESTIONS & DISCUSSION

