



Malaysian Teachers Training Institute
Tun Hussein Onn Campus
Batu Pahat, Johor
Malaysia



- Established in 1992 – one of 27 Teachers Training Institutes in the country.
- Used to train teachers (diploma level) for both primary & secondary schools.
- In year 2006, all such TEIs was upgraded to award teaching degrees for primary schools.



- Students do 3 semesters of preparatory course followed by a 4 years degree program
- Still trains graduates who wish to take up teaching as a profession (post degree diploma).
- We have both full-time students as well as holiday-train students
- We are under the Ministry of Education (MOE) while all the universities are under the Ministry of Higher Education (MOHE)

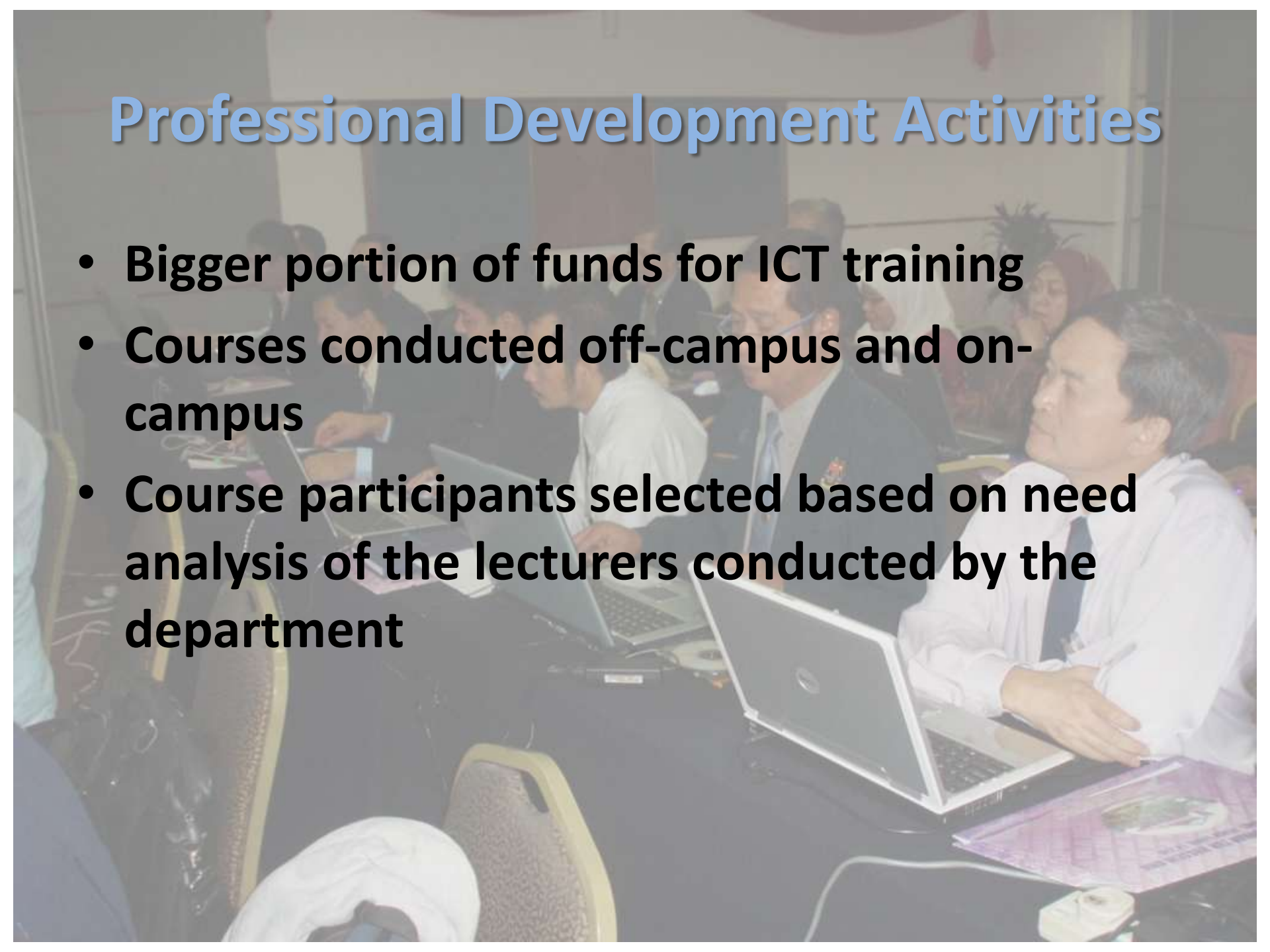
Professional Development Activities

- Shifted from ICT literacy to ICT integration
- Emphasis given to Peer Coaching
- Peer Coaching extended to serving teachers in schools



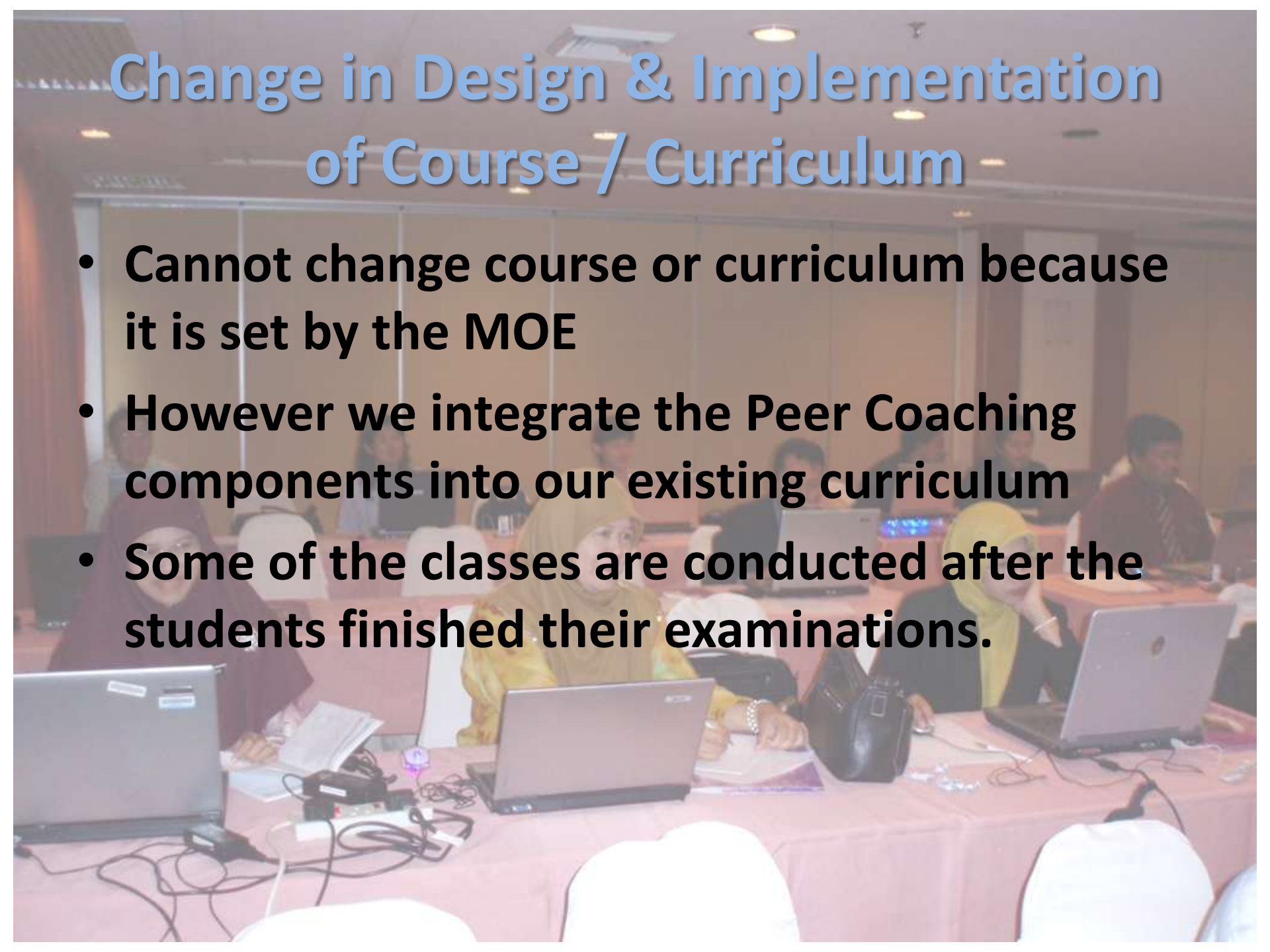
Professional Development Activities

- **Bigger portion of funds for ICT training**
- **Courses conducted off-campus and on-campus**
- **Course participants selected based on need analysis of the lecturers conducted by the department**



Change in Design & Implementation of Course / Curriculum

- **Cannot change course or curriculum because it is set by the MOE**
- **However we integrate the Peer Coaching components into our existing curriculum**
- **Some of the classes are conducted after the students finished their examinations.**



Introduction of New Policies on Integration of ICT

- **1 lecturer : 1 PC**
- **Campus Wide Internet Access**
- **2 x 4 mbps Metro-e Internet Connectivity**
- **Introduction of Learning Management System (LMS) using Moodle**
- **Opportunities to attend Seminars & Workshops – Preference to those who really integrate ICT in their teaching**



Thank You