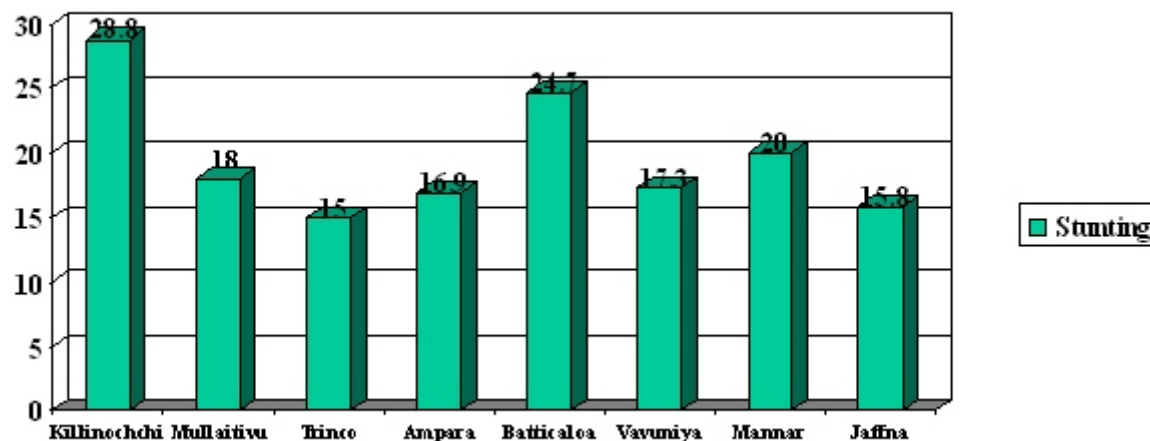


Appendix 1

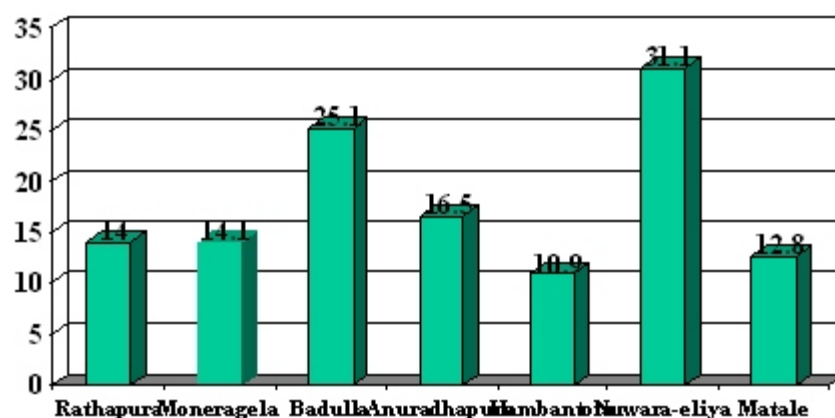
chapter 2

Figure 1: Prevalence of stunting by districts in North and East:



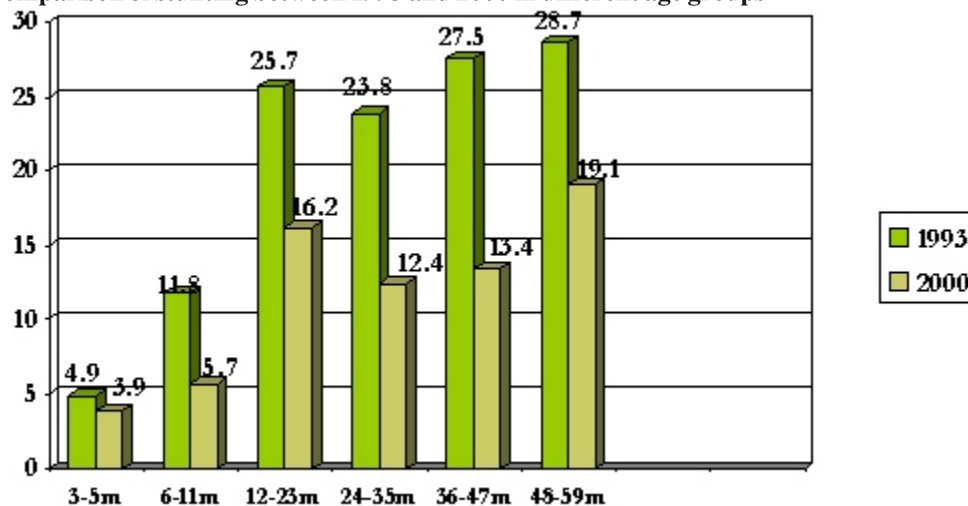
Source: Survey of Child Health and Welfare in selected districts in North and East 2004 and 2005/06

Figure 2: Prevalence of stunting in seven vulnerable districts in Sri Lanka



Sc

Figure 3: Comparison of stunting between 1993 and 2000 in different age groups



Source: DHS 1993 and 2000

Appendix 2

Chapter 3

Attendance Committees

Approximately 8500 School Attendance Committees at the level of Grama Niladhari units and Monitoring Committees were established at Divisional Secretariat level by 1999. These committees were expected to compile lists of non-school going children, conduct inquiries, instruct parents to send their children to school, provide assistance if required to meet necessities. In cases where parents are not able to provide a birth certificate heads of schools were instructed to accept affidavits or letters from the local

government agents as proof of a child's age. Committees consist of parents, school principals, members of School Development Committees and education officials. Nevertheless attendance committees had not convened regularly and had ceased to function by 2000. The lack of active involvement by Provincial Authorities and the officials involved in non-formal education activities both at the central and provincial levels had been the main reason.

Table 1: Gross Enrolment Rates in Primary Cycle by District and Gender 2001 and 2005

District	GER in 2001		GER in 2005	
	Male	Female	Male	Female
National	95*	94*	99*	94*
Colombo	104	104	100	96
Gampaha	95	96	94	93
Kalutara	103	103	103	100
Kandy	106	105	97	91
Matale	106	105	96	88
Nuwara Eliya	116	113	98	93
Galle	107	106	101	94
Matara	106	104	98	89
Hambantota	110	109	95	89
Ampara	118	114	102	95
Kurunegala	108	106	102	94
Puttalam	110	107	99	94
Anuradhapura	112	111	97	90
Polonnaruwa	104	104	96	87
Badulla	113	111	98	94
Monaragala	109	109	91	85
Ratnapura	110	106	91	87
Kegalle	107	105	104	95

Source: Annual School Census, MoE and Department of Census and Statistics

Note: Data in respect of seven administrative districts are not included in these tables as population data for them are not available.

Table 2: Gross Enrolment Rates in Secondary Cycle by District and Gender 2001 and 2005

District	GER in 2001		GER in 2005	
	Male	Female	Male	Female
National	96	96	92	95
Colombo	103	101	103	99
Gampaha	86	89	86	91
Kalutara	91	94	89	91
Kandy	97	98	93	95
Matale	96	99	86	90
Nuwara Eliya	91	96	90	92
Galle	94	99	91	93
Matara	95	97	89	89
Hambantota	97	104	94	95
Ampara	94	93	99	99
Kurunegala	98	100	95	96
Puttalam	91	91	92	94
Anuradhapura	98	101	98	98
Polonnaruwa	90	93	92	98
Badulla	94	99	92	94
Monaragala	97	99	96	94
Ratnapura	92	94	89	87
Kegalle	95	94	92	91

Source: Annual School Census, MoE and Department of Census and Statistics

Table 3 Public Expenditure on Education as a Percentage of GDP and the Government Expenditure

Year	Education Expenditure as a % of GDP	Education Expenditure as a % of Government Expenditure
1960	4.4	14.9
1970	4.1	12.7
1980	3.7	6.1
1990	3.0	10.5
2000	2.9	7.2
2002	2.9	6.8
2006	2.6	

Source: Central Bank of Sri Lanka

Table 4: Net Enrolment Rates in Primary Cycle by District and Gender 2001 and 2000

District	NER in 2001		NER in 2005	
	Male	Female	Male	Female
National	91	93	90	88
Colombo	96	99	96	94
Gampaha	87	91	89	91
Kalutara	90	93	96	96
Kandy	89	92	89	87
Matale	99	94	89	84
Nuwara Eliya	86	86	82	78
Galle	93	97	93	90
Matara	94	97	88	84
Hambantota	91	95	89	86
Ampara	78	80	88	85
Kurunegala	93	94	95	91
Puttalam	84	86	90	87
Anuradhapura	97	102	90	87
Polonnaruwa	94	98	88	83
Badulla	88	91	88	86
Monaragala	101	101	85	81
Ratnapura	91	92	82	80
Kegalle	92	93	95	91

Source: Calculated with school census data from MoE and estimated mid year population data from DCS.

Table 5: Net Enrolment Rates in Secondary Cycle by District and Gender 2001 and 2005

District	NER in 2001		NER in 2005	
	Male	Female	Male	Female
National	88	91	88	91
Colombo	99	99	101	96
Gampaha	80	86	83	90
Kalutara	86	90	86	89
Kandy	90	92	89	91
Matale	88	93	82	87
Nuwara Eliya	80	83	83	84
Galle	89	95	89	91
Matara	88	92	84	85
Hambantota	89	99	89	92
Ampara	83	85	92	94
Kurunegala	91	95	90	93
Puttalam	82	85	87	90
Anuradhapura	90	95	92	94
Polonnaruwa	83	89	89	95
Badulla	84	90	86	89
Monaragala	87	92	91	91
Ratnapura	83	87	84	84
Kegalle	88	89	88	89

Source: Calculated with school census data from MoE and estimated mid year population data from DCS.

Table 6: Gross Intake Rates in Primary Cycle by District and Sex 2001 and 2005

District	GIR in 2001		GIR in 2005	
	Male	Female	Male	Female
National	102	102	95	93
Colombo	98	98	93	94
Gampaha	90	92	89	93
Kalutara	97	99	98	97
Kandy	100	98	88	85
Matale	100	976	93	93
Nuwara Eliya	103	105	98	93
Galle	101	102	99	96
Matara	98	98	96	91
Hambantota	102	103	98	93
Ampara	105	86	90	87
Kurunegala	100	101	93	91
Puttalam	101	100	104	85
Anuradhapura	99	99	84	83
Polonnaruwa	91	93	77	76
Badulla	103	102	95	92
Monaragala	100	103	77	73
Ratnapura	104	103	85	93
Kegalle	99	102	95	91

Source: Annual School Census, MoE and Department of Census and Statistics

Table 7: Repetition Rates by Grade and Gender – 2003-2005: Sinhala Medium

Province	Year	Grade 1		Grade 2		Grade 3		Grade 4		Grade 5	
		Male	Female	Male	Female	Male	Female	Male	Female	Male	Female
Western	2003	0.15	0.11	0.22	0.14	0.21	0.13	0.19	0.12	0.55	0.18
	2004	0.10	0.12	0.23	0.16	0.18	0.11	0.26	0.10	0.38	0.16
	2005	0.09	0.08	0.18	0.13	0.19	0.11	0.34	0.15	0.52	0.23
Central	2003	0.19	0.16	0.20	0.10	0.25	0.20	0.33	0.11	0.42	0.34
	2004	0.04	0.03	0.16	0.08	0.09	0.05	0.26	0.13	0.46	0.33
	2005	0.11	0.07	0.17	0.08	0.20	0.20	0.25	0.14	0.48	0.28
Southern	2003	0.24	0.16	0.95	0.45	0.58	0.32	0.88	0.51	0.87	0.46
	2004	0.20	0.11	0.75	0.43	0.47	0.21	0.74	0.34	0.65	0.37
	2005	0.17	0.10	0.58	0.35	0.50	0.25	0.82	0.30	1.03	0.51
Nothern	2003	1.52	0.75	0.00	0.00	0.83	1.57	3.53	2.45	2.70	0.64
	2004	0.00	0.00	0.76	1.50	0.77	0.86	3.01	0.00	1.09	2.61
	2005	0.00	0.94	0.89	0.81	1.53	1.42	2.86	0.00	3.57	1.45
Eastern	2003	0.64	0.63	1.52	1.01	1.03	0.91	1.11	0.93	1.35	1.27
	2004	0.49	0.19	0.88	0.59	0.91	0.47	0.95	0.60	1.16	0.49
	2005	0.46	0.30	0.74	0.42	1.05	0.81	1.47	0.51	1.26	0.72
North Western	2003	0.53	0.46	0.90	0.45	0.49	0.30	0.83	0.40	0.70	0.29
	2004	0.39	0.28	1.00	0.65	0.63	0.48	0.82	0.55	0.89	0.39
	2005	0.34	0.21	0.80	0.62	0.58	0.38	0.74	0.46	0.91	0.45
North Central	2003	0.11	0.04	0.23	0.16	0.46	0.29	0.57	0.25	0.76	0.47
	2004	0.07	0.06	0.29	0.12	0.27	0.16	0.58	0.37	0.81	0.45
	2005	0.22	0.07	0.41	0.24	0.47	0.35	0.62	0.28	0.98	0.34
Uva	2003	0.33	0.13	0.33	0.11	0.73	0.50	0.52	0.36	1.23	0.83
	2004	0.21	0.14	0.27	0.24	0.86	0.30	0.80	0.54	0.95	0.52
	2005	0.16	0.11	0.35	0.20	0.54	0.44	0.77	0.36	0.93	0.48
Sabaraga muwa	2003	0.23	0.24	0.31	0.23	0.32	0.21	0.39	0.22	0.75	0.50
	2004	0.12	0.14	0.33	0.22	0.17	0.15	0.44	0.15	0.60	0.39
	2005	0.17	0.14	0.27	0.15	0.33	0.18	0.51	0.26	0.65	0.29

Table 8: Repetition Rates by Grade and Gender – 2003: Tamil Medium

Province	Year	Grade 1		Grade 2		Grade 3		Grade 4		Grade 5	
		Male	Female	Male	Female	Male	Female	Male	Female	Male	Female
Western	2003	1.10	0.56	0.75	0.51	0.87	0.78	0.86	0.58	0.62	0.59
	2004	0.11	0.31	0.14	0.08	0.14	0.22	0.21	0.23	1.16	0.71
	2005	0.43	0.21	0.49	0.28	0.57	0.36	0.94	0.40	0.97	0.46
Central	2003	1.17	0.96	1.34	1.11	1.66	1.43	2.58	2.03	2.26	1.77
	2004	1.24	0.92	1.95	1.34	2.25	1.82	2.27	2.01	3.65	2.55
	2005	1.11	1.04	1.65	1.33	2.00	1.53	2.26	1.76	2.65	1.94
Southern	2003	0.14	0.00	3.29	1.49	1.30	1.55	2.42	0.54	3.58	1.92
	2004	0.44	0.74	3.32	2.04	2.42	1.54	5.65	5.63	5.71	3.39
	2005	0.00	0.00	1.27	1.70	1.61	2.41	3.28	1.29	2.11	1.60
Nothern	2003	0.80	0.48	1.18	0.71	1.16	0.89	1.66	1.11	1.78	1.15
	2004	0.57	0.36	1.33	0.78	1.46	1.14	1.54	1.00	1.94	1.12
	2005	0.57	0.51	1.37	0.82	2.06	1.72	2.65	1.81	2.75	1.68
Eastern	2003	1.33	1.12	2.76	2.57	3.30	2.70	3.48	3.29	3.65	2.71
	2004	0.98	0.77	2.73	2.05	3.02	2.39	3.90	3.20	4.22	2.97
	2005	0.69	0.52	2.22	1.84	2.61	1.86	3.12	2.69	4.09	3.03
North Western	2003	0.90	0.72	0.80	1.24	0.93	0.97	1.04	0.78	0.90	0.56
	2004	0.63	0.46	0.45	0.30	0.40	0.34	0.71	0.52	0.53	0.51
	2005	0.27	0.10	0.53	0.55	0.65	0.34	0.59	0.56	0.82	0.59
North Central	2003	0.16	0.35	0.76	0.61	1.14	0.94	0.90	0.64	1.53	0.90
	2004	0.16	0.24	0.32	0.44	1.09	0.87	0.69	0.71	1.61	1.16
	2005	0.25	0.25	1.04	0.73	1.20	1.06	3.38	2.17	2.65	0.72
Uva	2003	1.81	1.37	2.31	2.12	3.77	3.74	4.02	3.55	4.18	2.74
	2004	1.98	1.60	2.97	2.72	5.03	3.21	5.94	4.51	6.33	4.21
	2005	1.82	1.33	2.55	1.92	3.81	3.07	4.78	3.35	5.46	3.89
Sabaraga muwa	2003	2.51	2.25	3.35	3.04	4.29	2.81	3.19	2.65	4.68	3.23
	2004	3.35	2.75	2.96	2.56	4.03	3.19	2.47	2.01	3.61	3.09
	2005	3.41	2.55	3.91	3.06	3.46	3.20	3.07	2.60	4.28	3.23

Table 9 : Repetition Rates in the Secondary Cycle-2003 - Sinhala Medium

Province	Year	Grade 6		Grade 7		Grade 8		Grade 9		Grade 10	
		Male	Female	Male	Female	Male	Female	Male	Female	Male	Female
Western	2003	0.76	0.27	0.63	0.27	0.41	0.15	0.30	0.13	0.25	0.10
	2004	0.61	0.30	0.45	0.20	0.33	0.12	0.21	0.04	0.15	0.03
	2005	0.87	0.26	0.85	0.31	0.76	0.25	0.49	0.20	0.21	0.08
Central	2003	0.31	0.05	0.29	0.17	0.23	0.12	0.15	0.07	0.08	0.03
	2004	0.37	0.10	0.27	0.17	0.26	0.15	0.22	0.09	0.05	0.03
	2005	0.43	0.14	0.29	0.13	0.20	0.13	0.16	0.11	0.07	0.06
Southern	2003	1.50	0.54	1.15	0.46	0.84	0.40	0.67	0.42	0.42	0.12
	2004	1.20	0.42	0.90	0.35	0.63	0.32	0.28	0.22	0.15	0.06
	2005	1.28	0.41	1.11	0.39	0.73	0.28	0.52	0.21	0.17	0.13
Nothern	2003	0.81	1.69	1.80	2.00	0.00	0.00	0.00	0.00	0.00	0.00
	2004	0.00	0.00	0.00	0.00	0.00	0.00	0.00	0.00	0.00	0.00
	2005	0.61	0.00	0.00	0.00	0.00	0.00	0.00	0.00	0.00	0.00
Eastern	2003	3.11	1.56	2.92	1.51	1.35	1.08	1.04	0.68	1.13	0.55
	2004	2.87	1.38	2.04	1.39	2.17	0.72	0.55	0.28	0.32	0.10
	2005	1.75	1.17	1.18	0.65	1.47	0.80	0.31	0.13	0.56	0.33
North Western	2003	0.67	0.30	0.66	0.37	0.54	0.36	0.46	0.19	0.12	0.10
	2004	1.34	0.61	0.64	0.35	0.60	0.28	0.43	0.20	0.12	0.04
	2005	0.93	0.40	0.73	0.32	0.50	0.18	0.29	0.14	0.14	0.06
North Central	2003	1.35	0.56	0.90	0.38	0.86	0.26	0.75	0.37	0.30	0.13
	2004	1.16	0.67	1.18	0.62	1.01	0.49	0.60	0.32	0.49	0.20
	2005	1.60	0.53	1.65	0.61	1.16	0.41	0.54	0.46	0.62	0.34
Uva	2003	2.19	1.09	1.67	0.86	1.33	0.84	0.90	0.72	0.44	0.36
	2004	2.41	1.09	1.51	0.80	1.11	0.52	0.44	0.26	0.41	0.32
	2005	1.72	0.83	1.41	0.78	0.80	0.48	0.59	0.40	0.36	0.12
Sabaragamuwa	2003	0.92	0.32	0.87	0.44	0.40	0.26	0.30	0.20	0.29	0.15
	2004	1.24	0.53	1.01	0.30	0.54	0.27	0.35	0.20	0.17	0.08
	2005	0.61	0.32	0.79	0.33	0.43	0.23	0.21	0.14	0.08	0.03
Sri Lanka	2003	<i>1.07</i>	<i>0.43</i>	<i>0.88</i>	<i>0.42</i>	<i>0.61</i>	<i>0.32</i>	<i>0.47</i>	<i>0.27</i>	<i>0.28</i>	<i>0.14</i>
	2004	1.12	0.50	0.79	0.37	0.60	0.28	0.33	0.17	0.19	0.08
	2005	1.03	0.40	0.93	0.38	0.67	0.28	0.40	0.21	0.22	0.11

Table 10: Repetition Rates in the Secondary Cycle-2003 - Tamil Medium

Province	Year	Grade 6		Grade 7		Grade 8		Grade 9		Grade 10	
		Male	Female	Male	Female	Male	Female	Male	Female	Male	Female
Western	2003	1.32	1.51	1.79	1.36	2.44	0.84	1.59	0.45	0.51	0.07
	2004	1.76	0.83	1.42	0.89	1.26	0.76	1.45	0.36	1.24	0.31
	2005	2.43	1.02	2.23	1.41	2.56	0.65	1.72	0.13	1.36	0.42
Central	2003	2.52	1.37	2.67	1.84	1.58	1.49	1.37	1.07	1.32	1.46
	2004	2.91	1.96	2.28	1.65	1.66	1.13	1.66	1.58	1.40	1.90
	2005	3.07	2.29	2.45	2.00	2.56	1.84	2.22	1.71	2.13	1.87
Southern	2003	4.68	1.32	3.39	1.03	4.04	1.12	3.35	1.34	2.39	0.91
	2004	5.20	7.24	7.85	3.54	7.43	1.33	7.80	0.67	2.83	0.55
	2005	1.32	1.26	2.50	0.77	0.87	0.92	0.21	0.22	0.27	0.00
Nothern	2003	1.83	1.31	1.85	0.93	1.48	0.95	1.16	0.94	1.07	0.97
	2004	2.51	1.85	1.58	1.03	1.84	1.05	1.25	0.88	0.97	0.90
	2005	3.75	2.01	3.25	1.94	3.02	1.77	2.02	1.40	2.36	1.48
Eastern	2003	3.68	2.72	3.58	2.75	3.08	2.42	2.25	1.92	2.48	1.64
	2004	3.47	2.46	3.48	2.42	2.15	1.71	1.74	1.35	3.04	1.31
	2005	3.55	2.96	3.93	2.59	3.41	2.25	2.65	2.04	2.64	1.78
North Western	2003	1.74	1.14	1.79	0.87	1.64	0.69	1.50	0.47	0.84	0.42
	2004	1.95	0.94	0.64	0.10	0.68	0.16	0.56	0.21	0.48	0.05
	2005	0.98	0.74	1.16	0.44	0.67	0.43	0.34	0.35	1.03	0.29
North Central	2003	2.45	2.69	2.80	1.96	1.94	1.15	1.73	2.07	1.79	1.47
	2004	1.25	0.58	1.75	0.63	0.88	1.51	1.38	0.89	1.29	1.28
	2005	3.96	3.24	1.19	1.33	2.00	0.77	1.15	0.87	0.82	0.35
Uva	2003	5.29	3.57	3.97	4.10	4.09	3.78	3.38	3.72	2.50	3.02
	2004	5.01	3.62	3.89	3.15	2.80	3.13	2.96	3.35	1.80	2.79
	2005	5.49	3.90	6.03	3.75	4.01	3.38	3.70	3.24	2.70	2.48
Sabaragamuwa	2003	3.04	1.84	2.65	1.97	2.85	1.86	1.48	0.57	1.37	0.89
	2004	1.83	1.74	1.77	1.15	1.38	1.05	1.17	0.49	0.00	0.08
	2005	3.05	2.44	2.95	1.68	1.87	1.07	0.58	0.33	0.24	0.08
Sri Lanka	2003	2.71	1.90	2.65	1.87	2.25	1.59	1.71	1.30	1.52	1.23
	2004	3.04	2.05	2.38	1.59	1.85	1.29	1.60	1.14	1.62	1.15
	2005	3.35	2.34	3.18	2.06	2.79	1.75	2.06	1.48	2.08	1.41

Table 11: Transition Rates from Lower Secondary Level to Upper Secondary Level by District and Gender 2001 and 2005

District	TR in 2001		TR in 2005	
	Male	Female	Male	Female
National	92	95	94	96
Colombo	95	97	96	96
Gampaha	93	95	94	97
Kalutara	93	95	94	95
Kandy	94	96	95	97
Matale	93	95	96	96
Nuwara Eliya	88	92	87	93
Galle	93	97	94	97
Matara	93	96	94	97
Hambantota	93	96	95	97
Jaffna	94	96	91	96
Kilinochchi	83	92	95	104
Mannar	88	96	93	102
Vavuniya	91	91	91	95
Mullativu	89	92	95	98
Batticaloa	86	89	90	92
Ampara	87	89	92	93
Trincomalee	89	88	92	90
Kurunegala	92	96	95	97
Puttalama	86	89	90	92
Anuradhapura	90	94	93	94
Polonnaruwa	93	95	92	95
Badulla	91	94	91	94
Monaragala	91	93	93	97
Rathnapura	92	96	94	97
Kegalle	95	96	96	97

Source: Calculated with school census data from MoE and estimated mid year population data from DCS.

Figure 4: Excess or Deficit of Science/Mathematics teachers in Secondary Level, 2005

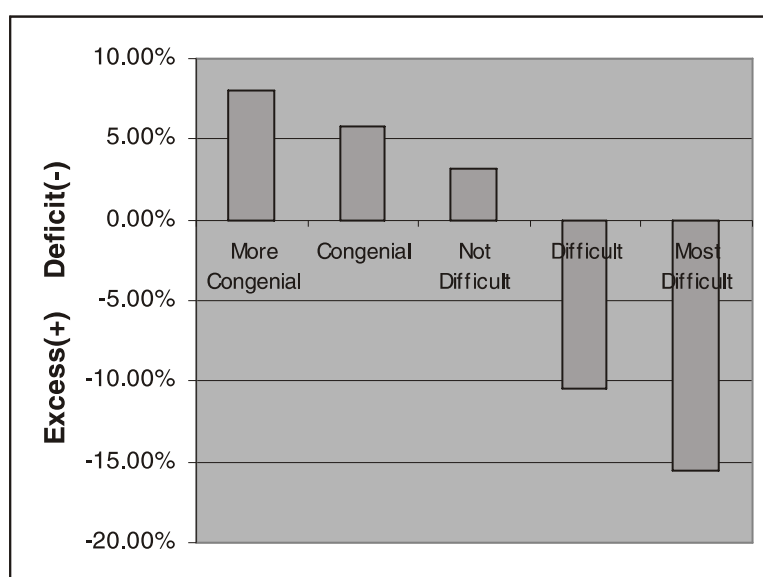


Figure 5: Performance at Grade 5 Examinations by Income Level– 2005
 Low income group High income group

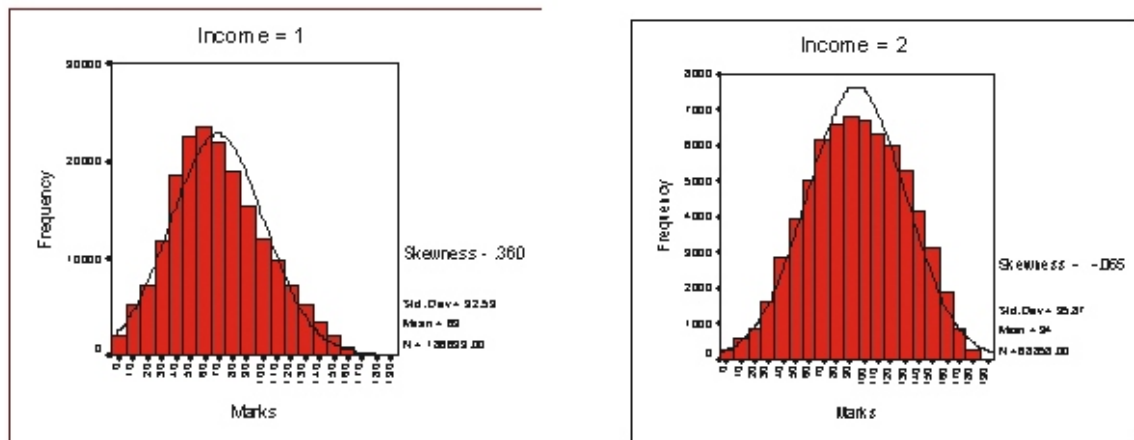


Figure 6: Performance at Grade 5 Examination by Income Level - 2001

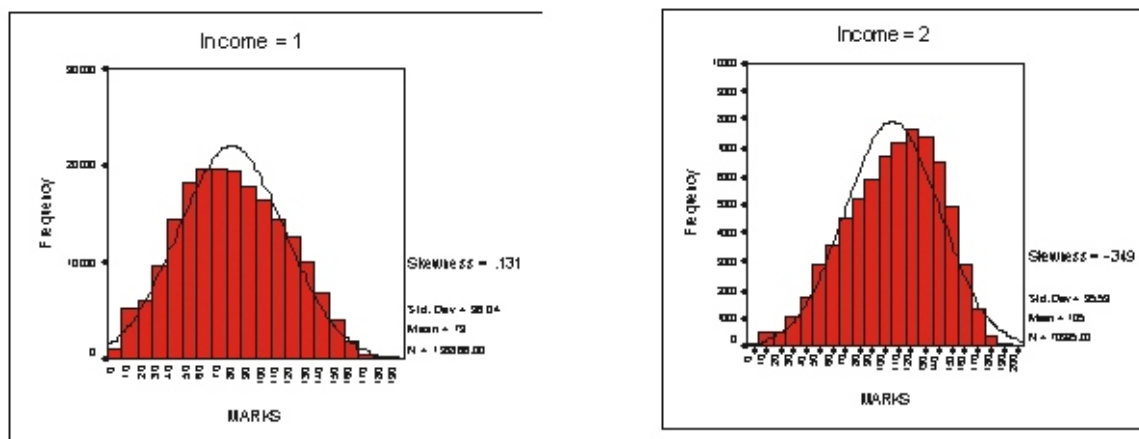


Figure 7: Performance of Students at Grade 5 Scholarship and Placement Examination 2001

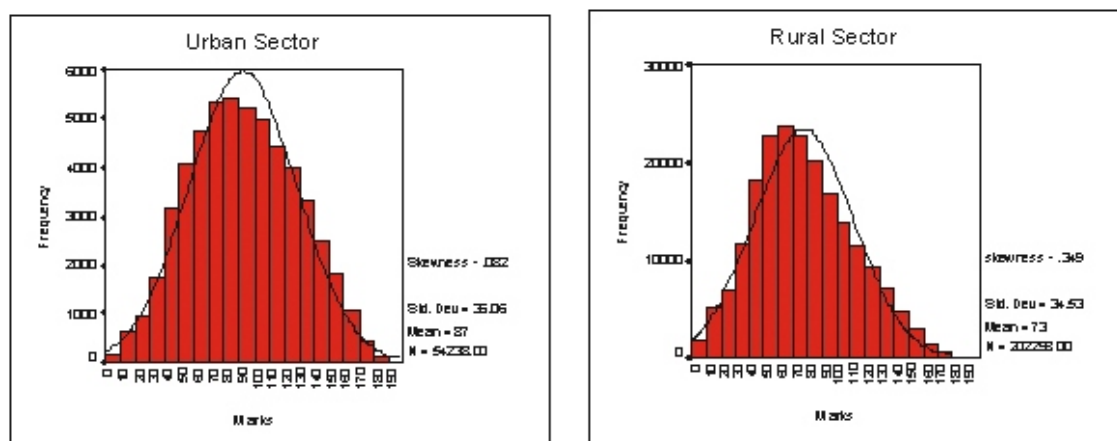


Figure 8: Performance of Students at Grade 5 Scholarship and Placement Examination 2001 by category of Schools

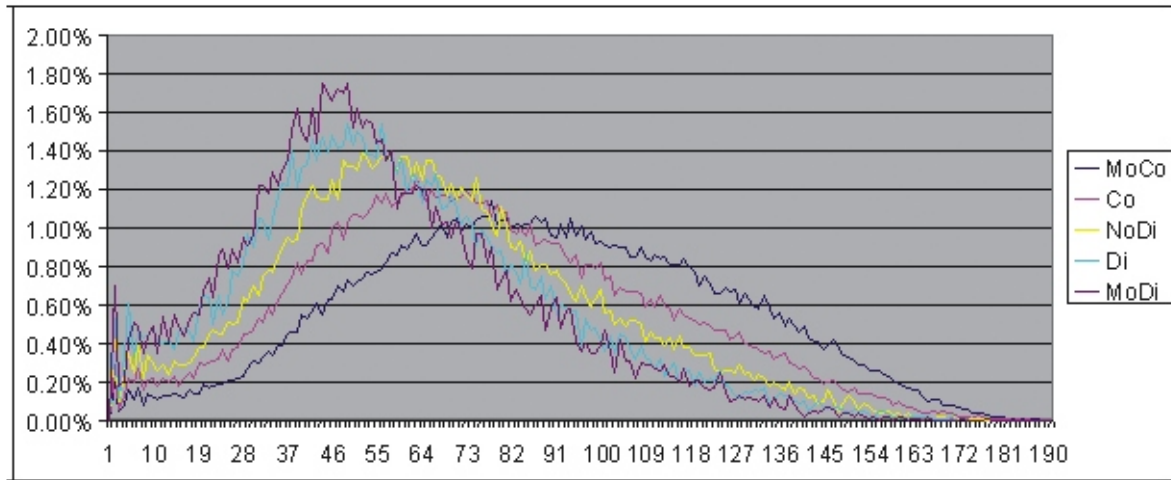


Figure 9: Performance of Students of Estate Sector Schools and Other Schools at Grade 5 Scholarship and Placement Examination 2001

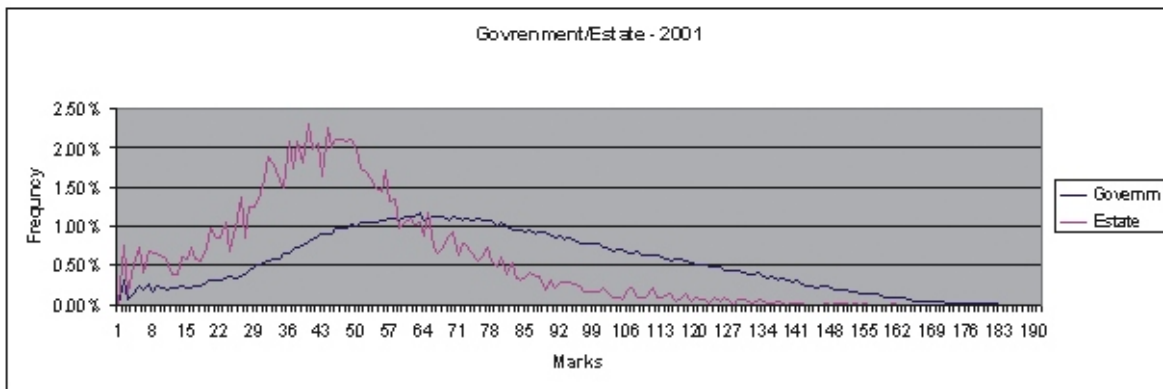


Figure 10: Performance of Students of Estate Sector Schools and Other Schools at Grade 5 Scholarship and Placement Examination 2005

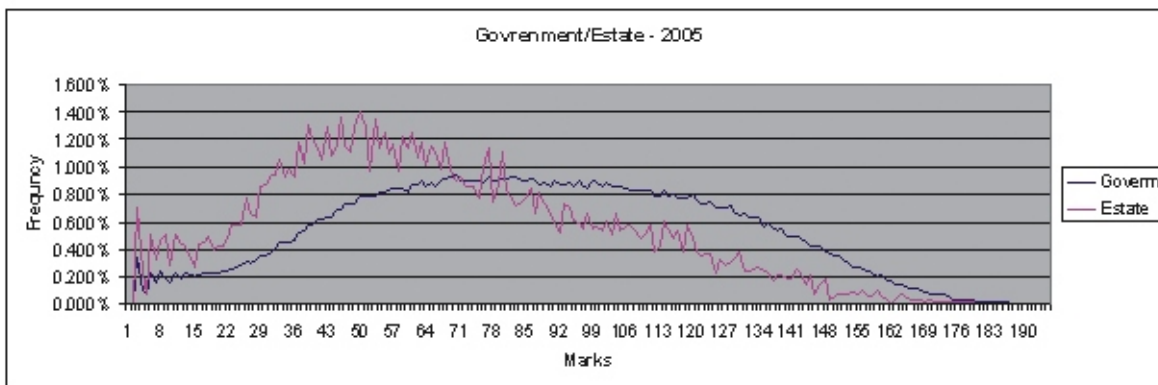


Figure 11: Performance of Male and Female Students at Grade 5 Scholarship and Placement Examination 2001

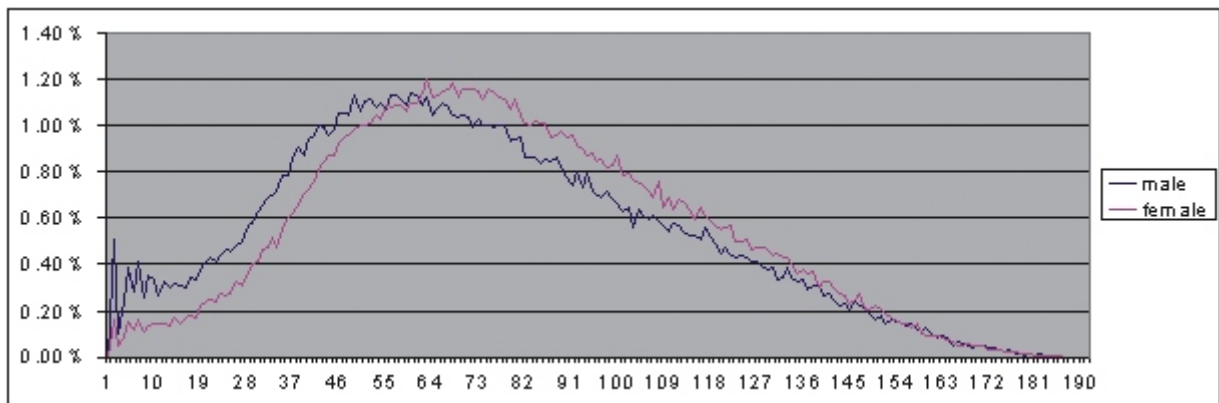


Figure 12: Performance of Male and Female Students at Grade 5 Scholarship and Placement Examination 2005

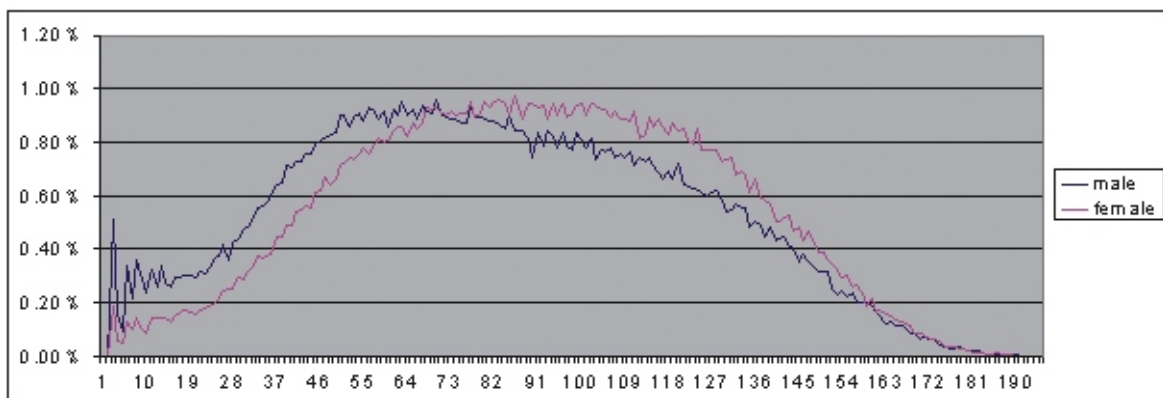


Figure 13: Performance of students in Science at GCE(OL) examination,2001

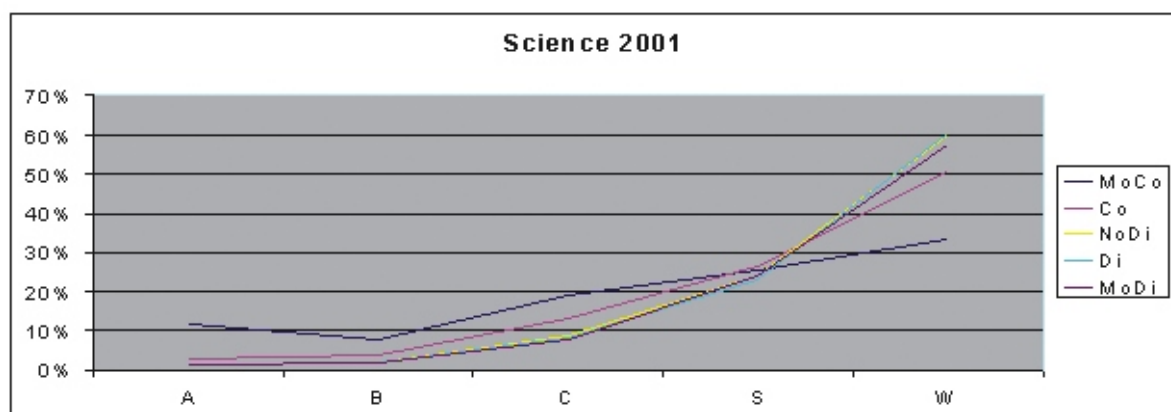


Figure 14: Performance of students in Mathematics at GCE (OL) examination,2001

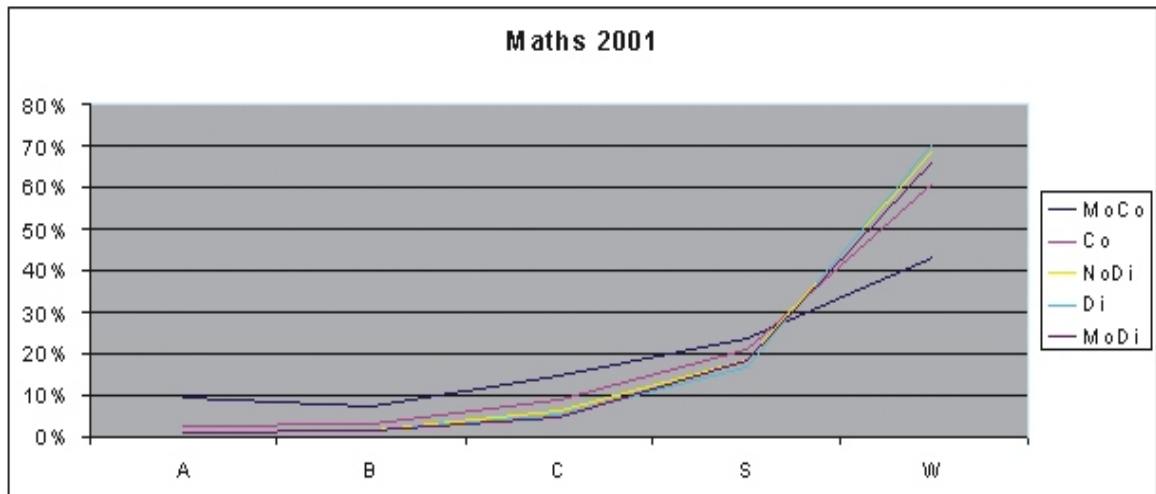


Figure 15: Performance of students in English at GCE(OL) examination,2001

Figure 16: Performance of students in Social Studies at GCE (OL) examination,2001

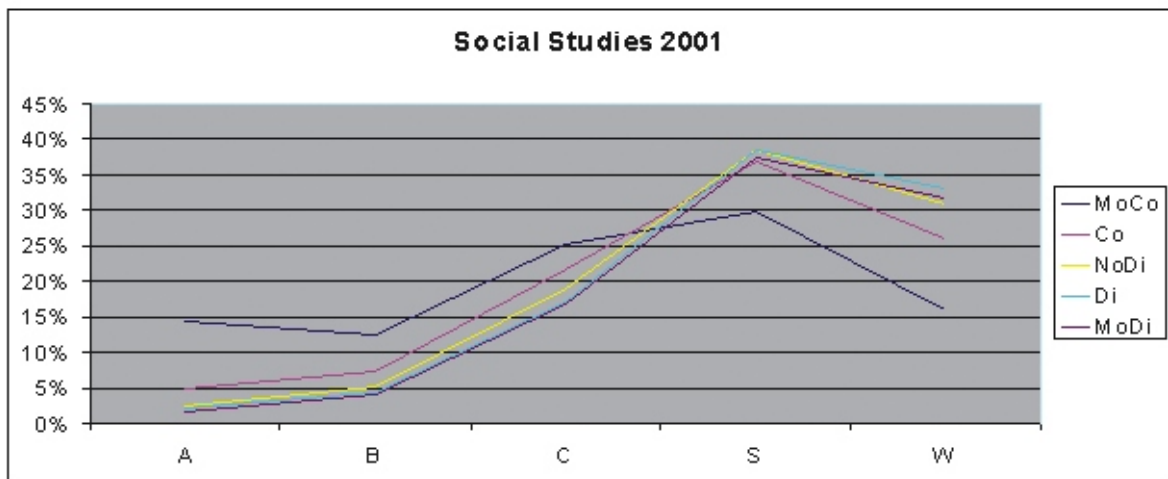


Figure 17: Performance of Students in Science at the GCE (OL) Examinations 2005 by category of Schools

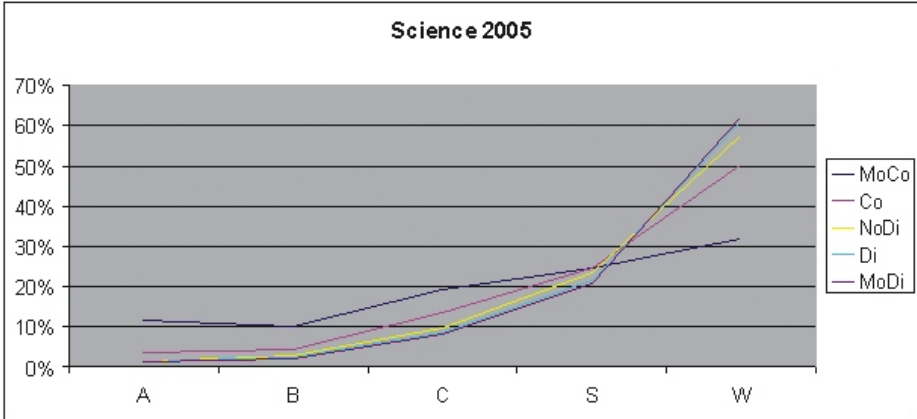


Figure 18: Performance of Students in Mathematics at the GCE (OL) Examinations 2005 by category of Schools

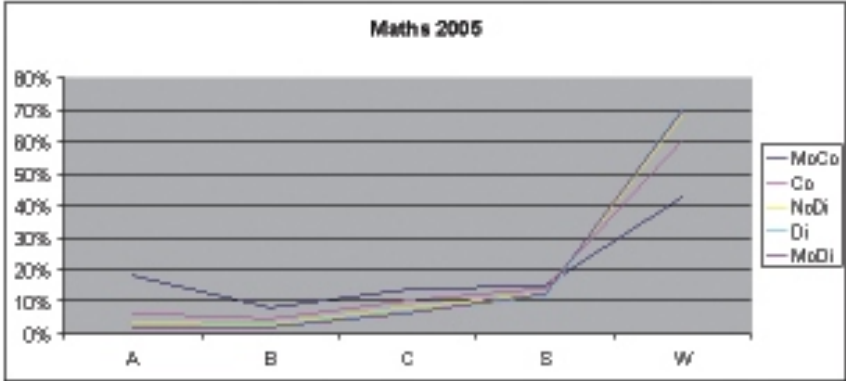


Figure 19: Performance of Students in English at the GCE (OL) Examinations 2005 by category of Schools

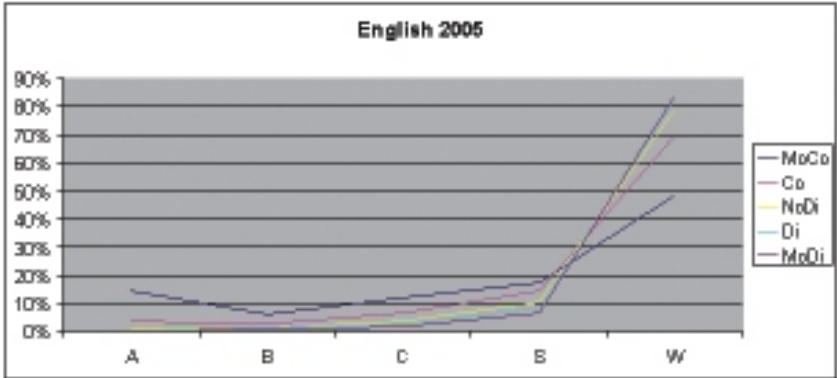
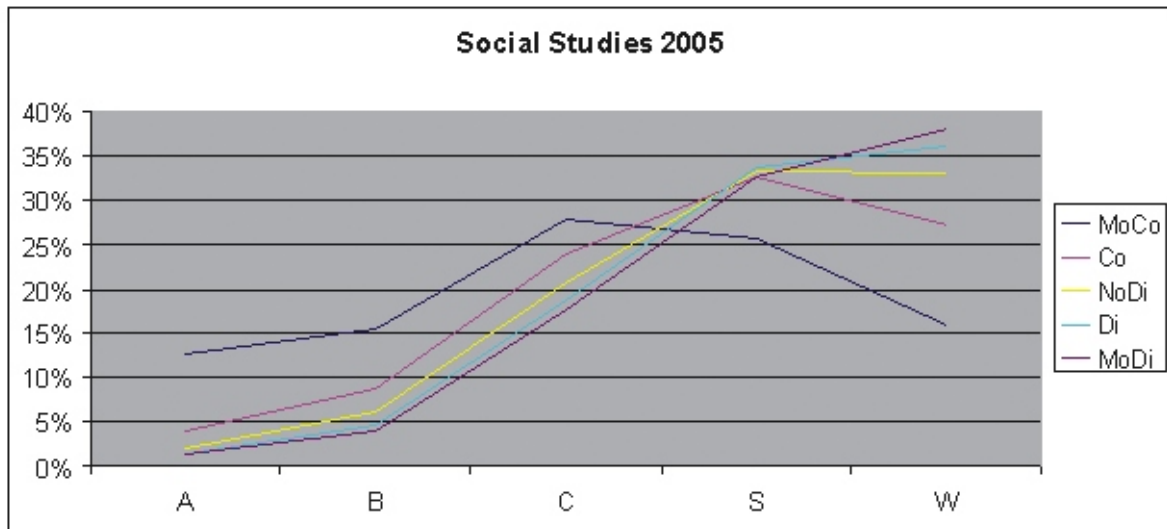


Figure 20: Performance of Students in Social Studies at the GCE (OL) Examinations 2005 by category of Schools



Appendix 3

Chapter 4

Table 12 Distribution of Learning Resource Utilisation Centres (LRUCs) established under SDP by Project Institutions and District (*)

Project	DTET	VTA	NAITA	NYSC	Total	District	DTET	VTA	NAITA	NYSC	Total
Mulambo	1	-	1	1	3	14. Mulativu	-	-	-	-	0
Wampaha	1	-	-	1	2	15. Batticaloa	-	-	-	1	1
Mulutara	1	1	-	1	3	16. Ampara	1	1	-	1	3
Wandy	2	-	-	1	3	17. Trincomalee	1	1	-	-	2
Watala	-	1	-	1	2	18. Kurunegala	1	1	1	1	4
Wawara Eliya	1	-	-	1	2	19. Puttalam	1	1	-	-	2
Walle	1	1	-	-	2	20. Anuradhapura	1	-	-	1	2
Wataraka	1	1	-	-	2	21. Polonnaruwa	1	-	-	-	1
Wambantota	1	1	-	-	2	22. Badulla	-	2	-	1	3
Waffna	1	-	-	-	1	23. Moneragala	1	1	-	1	3
Wālinochchi	-	-	-	-	0	24. Ratnapura	2	-	-	-	2
Wannar	-	1	-	-	1	25. Kegalle	1	1	-	-	2
Wavuniya	1	-	1	-	2	Total	21	14	3	12	50

Source:TVEC

Table 13 Distribution of Career Guidance and Counselling Centres (CGCCs) by institute and district

Project	DTET	VTA	NAITA	NYSC	NGO	Total	District	DTET	VTA	NAITA	NYSC	NGO	Total
Mulambo	1	-	-	-	-	1	14. Mulativu	-	-	-	-	-	0
Wampaha	1	-	1	1	-	3	15. Batticaloa	-	-	-	1	-	1
Mulutara	1	1	-	1	-	3	16. Ampara	1	1	-	1	-	3
Wandy	2	-	-	1	-	3	17. Trincomalee	1	1	-	-	-	2
Watala	1	1	-	1	-	3	18. Kurunegala	2	1	1	1	-	5
Wawara Eliya	1	-	-	1	1	3	19. Puttalam	-	1	-	1	-	2
Walle	1	1	-	-	-	2	20. Anuradhapura	1	-	-	1	-	2
Wataraka	-	1	1	-	-	2	21. Polonnaruwa	1	-	-	-	-	1
Wambantota	1	1	-	-	-	2	22. Badulla	-	1	1	1	-	3
Waffna	1	-	-	-	-	1	23. Moneragala	1	1	-	1	-	3
Wālinochchi	-	-	1	-	-	1	24. Ratnapura	-	-	1	2	-	3
Wannar	-	-	-	-	-	0	25. Kegalle	1	1	-	-	-	2
Wavuniya	-	-	1	-	-	1	Total	18	12	7	14	1	52

Source:TVEC

Table 14: Excess and Deficit of Teachers by District and Medium and District 2005

District	Sinhala medium		Tamil medium	
	Excess	Deficit	Excess	Deficit
Colombo	1585	358	195	70
Gampaha	1501	302	32	76
Kalutara	1353	274	151	214
Kandy	3366	213	250	419
Matale	1032	82	82	64
Nuwara Eliya	573	308	147	912
Galle	1354	169	12	32
Matara	2184	103	25	70
Hambantota	1037	178	21	16
Jaffna	0	35	478	392
Kilinochchi	1	0	69	187
Mannar	2	0	26	239
Vavuniya	40	14	105	365
Mullativu	3	0	28	220
Batticaloa	8	15	615	745
Ampara	363	126	375	250
Trincomalee	107	67	253	460
Kurunegala	4693	104	92	225
Puttalam	360	421	36	473
Anuradhapura	1718	774	254	177
Polonnaruwa	163	550	3	140
Badulla	2195	311	117	550
Monaragala	527	284	6	101
Ratnapura	803	532	33	326
Kegalle	1872	145	128	235
Total	26840	5365	3533	6958

References

- Annual Health Bulletin 1998 to 2003,
Department of Health Services, Sri Lanka.
- Annual Report on Family Health, Sri Lanka,
2004-2005
- Blumberg R.L (2006). *How mother's economic activities and empowerment affect early childhood care and education (ECCE) for boys and girls: A theory guided exploration across history cultures and societies*.
Background paper prepared for the Education for all global monitoring report 2007
- Central Bank of Sri Lanka (June 2007) *Sri Lanka Socio- Economic Data 2007*
- Child Protection Authority Act No 50 of 1998
- Dharmadasa I. and Wickremeratne V. (2004) *Sri Lankan Child's Optimal Development* in J. Pattnaik *Childhood in South Asia: A Critical Look at Issues Policies and Programmes* <http://books.google.com/books> Retrieved on 22.12.2007
- EPI data, Epidemiology Unit, Ministry of Healthcare and Nutrition
- Evans J. L., Myers R.G. and Ilfield E. M. (2000) *Early Childhood Counts: A Programming Guide on Early Childhood Care for Development* World Bank Institute, Washington
- Facts in Action, (2000). *Three Studies Find Quality Child Care helps Kids* Original Source: Suzanne W. Hepburn (Ed) *Cost Quality and Child Outcomes in Child care Centres*, 1995, Frank Porter Graham, *The Carolina Abecedarian Project* 1999, NIGH
- Study of Early Child Care* 1998. <http://www.associatedearlycareandeducation.org>
Retrieved on 9.8.2003
- General Education Reforms 1997 (1997) The Presidential Task Force on General Education,
Sri Lanka.
- Guidelines for Child Development Centres (2006) Children's Secretariat, Ministry of Child Development and Women's Empowerment supported by UNICEF
- Iodine Nutrition Status in Sri Lanka, 2005(2006). *Medical Research Institute*, Department of Healthcare and Nutrition, Ministry of Health, Nutrition and Welfare, Sri Lanka.
- Knitzer J (2000), *Promoting resilience: helping young children and parents by affected by substance abuse, domestic violence and depression in the context of welfare reform*.
New York, National Centre for Children in Poverty as cited in Zero to Three. <http://zerotothree.org>
- Lynch R. G. (2004) *Exceptional returns Economic Fiscal and Social Benefits* <http://www.epinet.org>
Monitoring and Evaluation Unit, FHB
- National Plan of Action 2002-2008, *Department of National Planning*
- National Policy on Early Childhood Care and Development (2004) Children's Secretariat, Ministry of Social Welfare.
- Perera H. (2003). *Readiness for School Entry: A Community Survey*. www.sciencedirect.com
Retrieved on 2.6.2007

SAARC, regional Poverty Profile, (2005?)
Poverty Reduction in South Asia through Productive Employment, SAARC Secretariat, Kathmandu 2006

Schorr L. and Both D. (1991) *Attributes of Effective Services for Young Children: A Brief Survey of Current Knowledge and its Implications for Programme and Policy Development*. Background Paper in the Report of a workshop held in 1991 on *Effective Services for Young Children: National Forum on the future of Children and Young Families*. National Research Council, National Academy Press.

Sri Lanka Demographic and Health Survey (DHS 2000). Department of Census and Statistics in collaboration with Ministry of Health, Nutrition and Welfare

Survey Assessment of Anaemia Status in Sri Lanka (2001), *Medical Research Institute*, Department of Health Services, Ministry of Health, Nutrition and Welfare, Sri Lanka.

Survey of Child Health and Welfare in Killinochchi and Mullaitivu Districts in Sri Lanka 2005/06. Department of Census and Statistics and UNICEF, Sri Lanka

Survey of Child Health and Welfare in Selected Northern and Eastern Districts in Sri Lanka (2004) Department of Census and Statistics and UNICEF Sri Lanka.

Survey of Child Health and Welfare in Seven Districts in Sri Lanka 2003. Department of Census and Statistics and UNICEF Sri Lanka.

Talagala I. M. M. (2004) *An Investigation into Levels of Age Appropriate Abilities of Preschool Children and the Intervention*

Needs of Preschool Children at Risk: A study on Sri Lankan Preschoolers between the ages of 3-4 ½ years. Unpublished PhD. Dissertation University of Colombo

The Constitution of the Democratic Socialist Republic of Sri Lanka 1978

The National Survey on Children Who Do Not Attend Preschool (2006). Unpublished survey conducted by the Children's Secretariat. Sri Lanka

Vani S. and Umesh K. Iodine (2004) *Deficiency and Development of Brain* Department of Human Nutrition, All India Institute of Medical Sciences, Ansari Nagar, New Delhi

Vitamin A deficiency status of Children in Sri Lanka (2006) Medical Research Institute, Ministry of Healthcare and Nutrition, Unpublished data.

Vitamin A Deficiency Status of Children Sri Lanka 1995.1996 (1998). Medical Research Institute, Ministry of Health and Indigenous Medicine, Sri Lanka,

Wijetunge, S. and Wickremaratne, V (2003). *National Study on Child Care Provision in Preschools, Sri Lanka*. Children's Secretariat, Ministry of Social Welfare funded by UNICEF

Amarasignhe, S. (2002) *The commercial sexual exploitation of children: A rapid assessment*, Geneva: ILO

Aturupana, H. (2005) *Treasures of the Education System in Sri Lanka: Restoring Performance, Expanding Opportunities and Enhancing Prospects*. Background paper for Seminar on Globalisation and Education. Social Policy Analysis Centre, University of Colombo and Institute of Education, University of London.

- Coalition for Education Development (2007) *The Right to Education*, Commonwealth Education Fund
- Department of Census and Statistics (2001-2005), *Population Census Reports*.
- Jayatilaka, M.W.A.P (2004) *Policy framework and National action plan for the elimination of worst forms of child labour*
- Jayawera, Swarna and Gunwardena, Chandra (2002) *Education for All: Review situation of children in the 5-14 age group*. Commonwealth Education Fund, Sri Lanka
- Jayaweera, Swarna, Shanmugam, Ratnapala, Charika (2002) *Child labour and non- school going in selected low income communities in Sri Lanka*. Study Series No. 25. Colombo: CENWOR
- Little, A.W. (2001) Multigrade teaching; towards an international research and policy agenda. *International Journal of Education development*, 21 (6), 481-498
- Ministry of Education (2005) *Education Finance*. Secondary Education Modernisation Project.
- Ministry of Education, ESDFP (2006) *Final Report of the Education Sector Development Framework and Programme*, Ministry of Education, Sri Lanka
- Ministry of Education, *Annual School Census Reports 2001 - 2006*
- National Institute of Education and UNICEF (2002) *Rapid Needs Assessment for Education of children affected by the conflict in Sri Lanka*
- National Education Commission (2003) *Proposals for a National Policy Framework on General Education in Sri Lanka*
- NEREC (2004) *A survey on the Basic Education Status of the Families of the 'Vedda' community in Dambana and Honnangala*. Faculty of Education University of Colombo, Sri Lanka, Faculty of Education, University of Colombo
- NEREC (2007) *National Assessment of Achievement of Grades 8 and 10 students in Sri Lanka: Patterns and trends in performance*. National Education Research Evaluation Centre, Faculty of Education, University of Colombo, Sri Lanka.
- Unicef (2003a) *Catch Up Education in Sri Lanka: A Review*
- Unicef (2003b) *Survey of Child Health and Welfare in Seven Districts in Sri Lanka*
- Unicef (2004a) *National Action Plan for the Children of Sri Lanka, 2004-2008*
- Unicef (2004b) *Survey of Child Health and Welfare in selected Northern and Eastern Districts in Sri Lanka*
- Vithanapathirana, M.V. (2006) Adapting the primary mathematics curriculum to the multigrade classroom in rural Sri Lanka. In *Education for All and Multigrade Teaching* Angela Little (Ed.) Amsterdam: Springer
- Vithanapathirana, M.V. (2007) *Remedial Education Programme for quality improvement in teaching and learning*. NEREC, University of Colombo, Sri Lanka
- World Bank (2003) *Attaining the Millennium Development Goals in Sri Lanka*

- S.T. Hettige and Markus Mayer (July 2002): *Sri Lanka Youth – Challenges and Responses*
- Ministry of Vocational & Technical Training
Statistical Handbook – 2004 (August 2005)
- Tertiary and Vocational Education Commission:
Labour Market Bulletin (2000 /Jan-Jun to 2006 / July – Dec.) (12 volumes)
- Asian Development Bank (Oct. 2005) : *Report and Recommendation of the President to the Board of Directors – Technical Education Development Project*
- Ministry of Vocational & Technical Training
(July 2007): *Project Completion Report of Skills Development Project*
- Tertiary and Vocational Education Commission
(Dec 2006): *Management Information System Report.*
- Department of Census and Statistics – (First Quarter-2007): *Quarterly Report of the Sri Lanka Labour Force Survey.*
- Emerging Issues among adolescents in Sri Lanka- *UNICEF- Min of Health 2004*
- Assessment of School Health Activities -
UNICEF - Min of Education 2004
- Carraher, T. Face-saving and literacy in Brazil. *Sociological Abstracts.* 32, 40-41.N. (1984)
- Department of Prisons (2006) *Prison Statistics of Sri Lanka Silver Jubilee Vol. 25, Colombo*
- Gunawardena, Chandra (1997) Problems of Illiteracy in a Literate Developing Society: Sri Lanka. *International Review of Education*, 43(5-6) 595-609
- Gunawardena, Chandra, W.A. de Silva and N.G. Kularatne (1997) “Interventions to Improve Literacy in Selected Deprived Communities in Sri Lanka”. *Case Studies in Education Research and Policy*, Asian Development Bank Manila .
- Jayaweera, Swarna and Gunawardena, Chandra (2004) *National Survey on Non-schooling and Absenteeism Save the Children (Sri Lanka)* (Unpublished)
- Lestage, Andre (1981) *Literacy and Illiteracy Paris: UNESCO, Educational Studies and Documents, No.42*
- Ministry of Education and Higher Education (1999) *The EFA Assessment: Country Report – Sri Lanka* (Unpublished)
- Ministry of Education (2001) *Education for All: Three Year Plan of Action (2002-2004)*, Sri Lanka South Asia Sub-Regional Ministerial Conference, Kathmandu, Nepal, 10-12 April, 2001 (Unpublished)
- Ministry of Education (Undated) *Education for All: Action Plan (2004-2008)* (mimeographed)
- Ministry of Education, Non-Formal and Special Education branch (2005) *Non-Formal Education Programmes 2004-2005*, (mimeographed)
- Ministry of Education (Undated) *Education for All: Draft National Action Plan (2007-2010)* (mimeographed)
- National Education Commission, (2006) *Survey of Language and Mathematics Competencies of Students in Grades 6 and 10.* National Education Commission. Colombo
- National Education Research and Evaluation Centre (2003) *National Assessment of Grade 4 Cognitive Achievement* National Education

-
- Research and Evaluation Centre, University of Colombo, Colombo
- National Institute of Education (2007) The Open School
- Perera, W.S. (2003) *Implementation of Compulsory Education Regulations* National Education Commission, Colombo
- Roberts, Peter (1995) Defining literacy: Paradise, Nightmare or Red Herring? *British Journal of Educational Studies*, Vol. 43, No.4, 412-432
- Ryan, John (1985) Some Key Problems in Adult Literacy *Prospects* 25(3) 375-383
- Suranimala, E. and Fernando, Chandana (Undated) Performance of Grade 5 students in Literacy and Numeracy Primary Education Unit, National Institute of Education, Maharagama (Unpublished)
- UNESCO (2006) Guidelines for the Asia and Pacific Mid-decade Assessment: Identifying and Reaching the Unreached. UNESCO
- United Nations Development Programme (2003) Human Development Report 2003: Millennium Development goals: A Compact among nations to end human poverty UNDP, New York