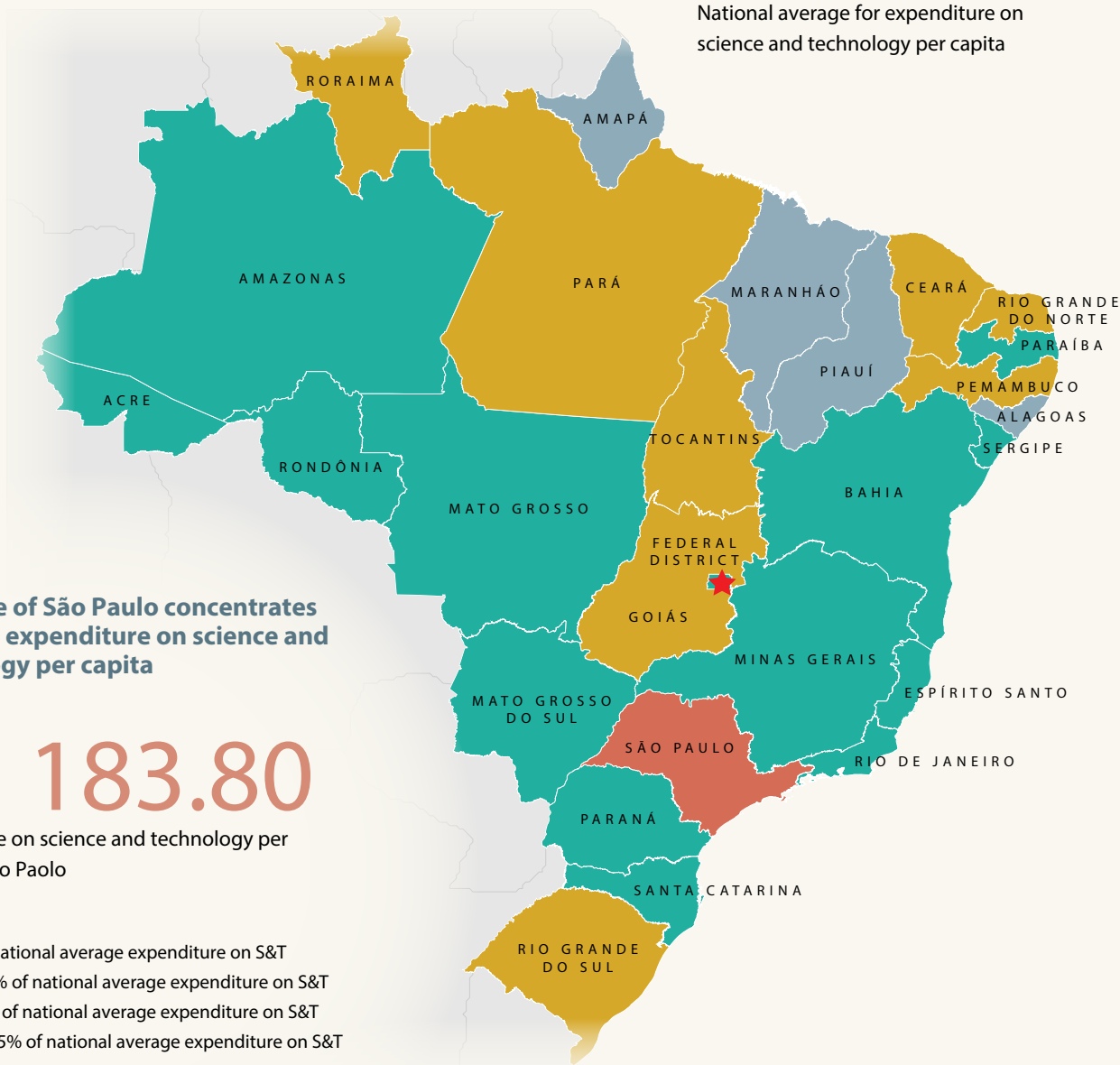


Figure 8.12: Relative shares of Brazilian states for investment in science and technology

R\$ 69.50

National average for expenditure on science and technology per capita



Ten of Brazil’s research universities are found in Rio de Janeiro and São Paulo

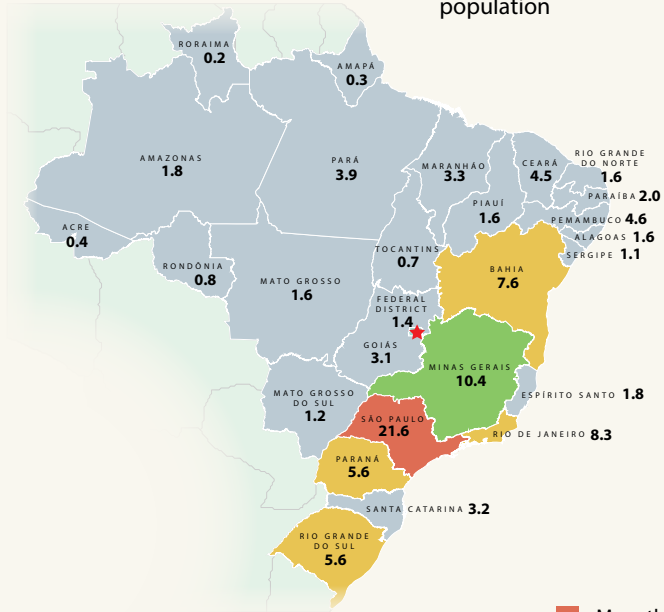
Research universities in Brazil

Region/ Federative unit	Research universities	Region/ Federative unit	Research universities
Ceará	Federal University of Ceará	São Paulo	University of São Paulo
Pernambuco	Federal University of Pernambuco		University of Campinas (Unicamp)
Minas Gerais	Federal University of Minas Gerais		State University of São Paulo
Rio de Janeiro	Federal University of Rio de Janeiro		Federal University of São Paulo
	Oswaldo Cruz Foundation		Federal University of São Carlos
	Pontifical Catholic University	Rio Grande do Sul	Federal University of Rio Grande do Sul
	University of Rio de Janeiro		Pontifical University of Rio Grande do Sul
	State University of Rio de Janeiro	Santa Catarina	Federal University of Santa Catarina
Paraná	Federal University of Paraná	Distrito Federal	University of Brasília

Six states account for 59% of the population

22%

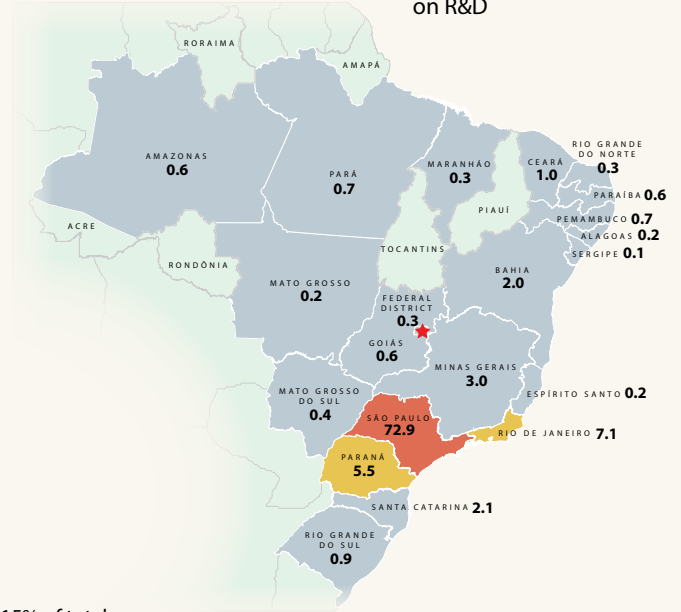
State of São Paulo's share of Brazilian population



The State of São Paulo concentrates three-quarters of public expenditure on R&D

73%

State of São Paulo's share of public expenditure on R&D

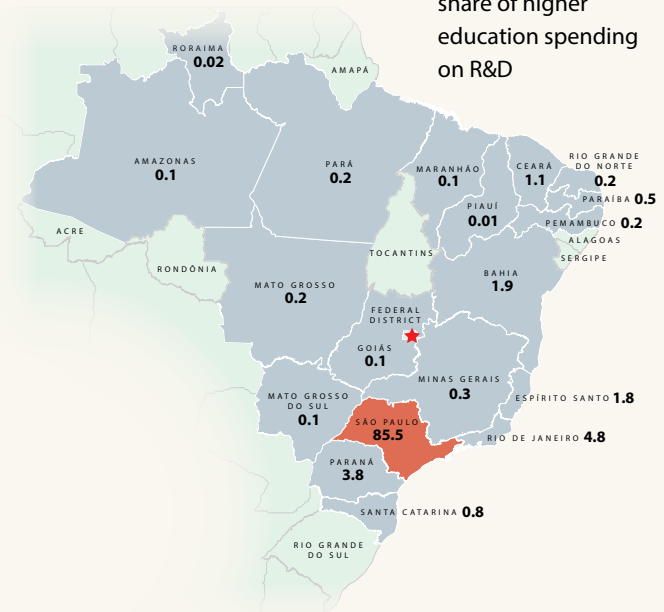


- More than 15% of total
- 10–14.9% of total
- 5–9.9% of total
- Less than 5% of total
- Data unavailable
- ↑ Number of research universities

São Paulo dominates higher education spending on R&D

86%

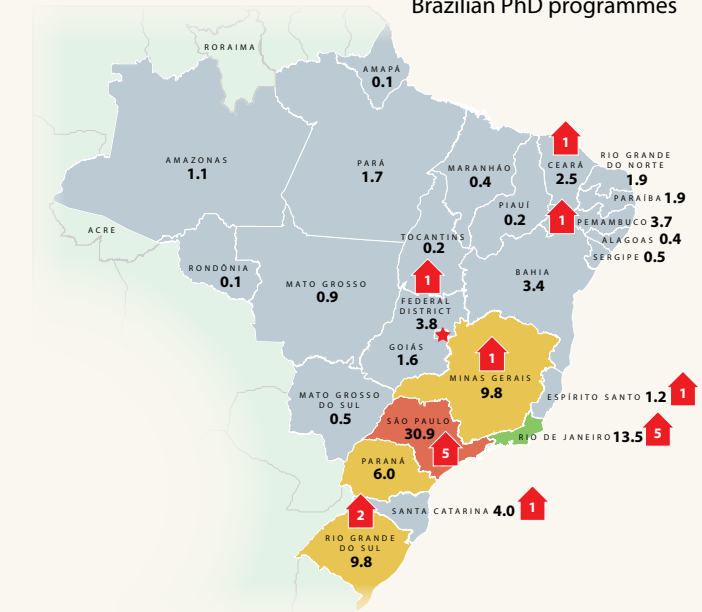
State of São Paulo's share of higher education spending on R&D



Five states concentrate more than half of Brazilian PhD programmes

31%

State of São Paulo's share of Brazilian PhD programmes



Source: Instituto Brasileiro de Geografia e Estatística (IBGE)