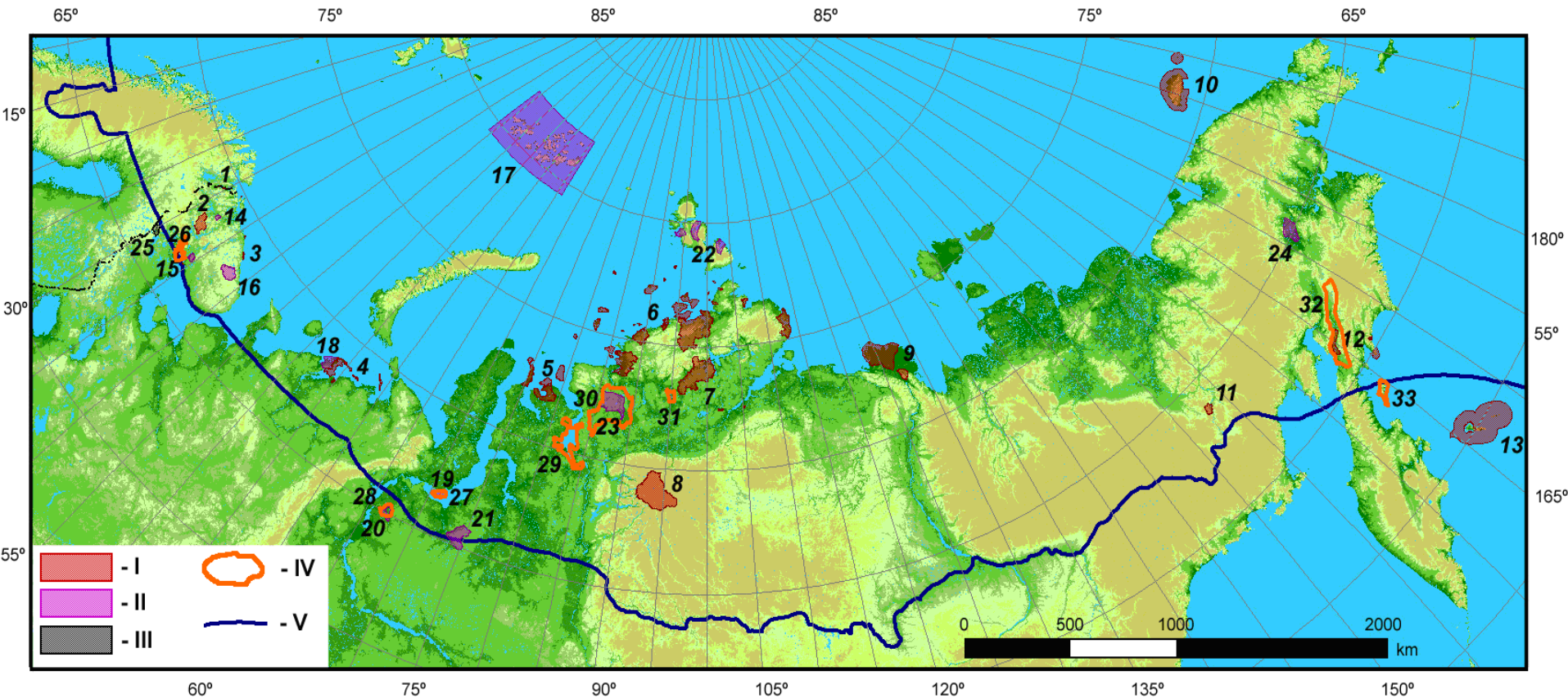


Biodiversity Monitoring Capacity in Russia

From the Ministry of Nature
Resources Data

Strictly protected areas and Ramsar sites in Russian Arctic



I. Nature reserves: 1 – Pasvik; 2 – Laplandsky; 3 – Kandalakshsky; 4 – Nenetsky; 5 – Gydansky; 6 – Bolshoy Arktichesky; 7 – Taimyrsky; 8 – Putoransky; 9 – Ust-Lensky; 10 – Ostrov Vrangelya; 11 – Magadansky; 12 – Koryaksky; 13 – Komandorsky;

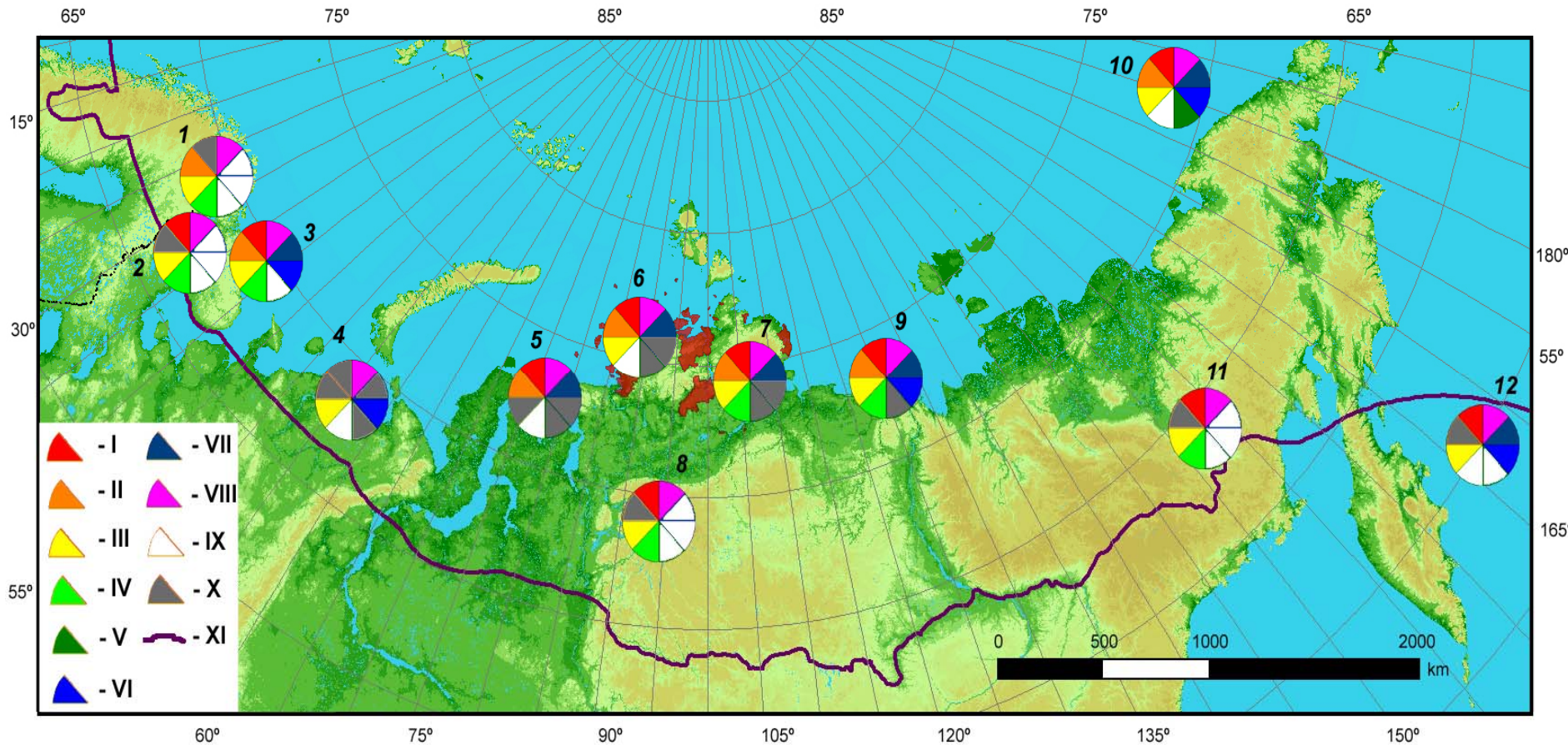
II. Federal refuge: 14 – Tulomsky; 15 – Beloozersky; 16 – Murmansky; 17 – Zemlya Frantsa-Iosifa; 18 – Nenetsky; 19 – Nizhne-Obsky; 20 – Kunovatsky; 21 – Nadymsky; 22 – Severozemelsky; 23 – Purinsky; 24 – Lebediny;

III. National parks: 25 – Paanayarvi

IV. Wetlands (Ramsar): 26 – Kandalaksha Bay; 27 – Islands in Ob Estuary, Kara Sea; 28 – Lower Dvuobje; 29 – Brekhovskiy Islands in the Yenisei estuary; 30 – Area between the Pura & Mokoritto Rivers; 31 – Gorbitya Delta; 32 – Parapolskiy Dol; 33 – Karaginskiy Island, Bering Sea

V. CAFF border

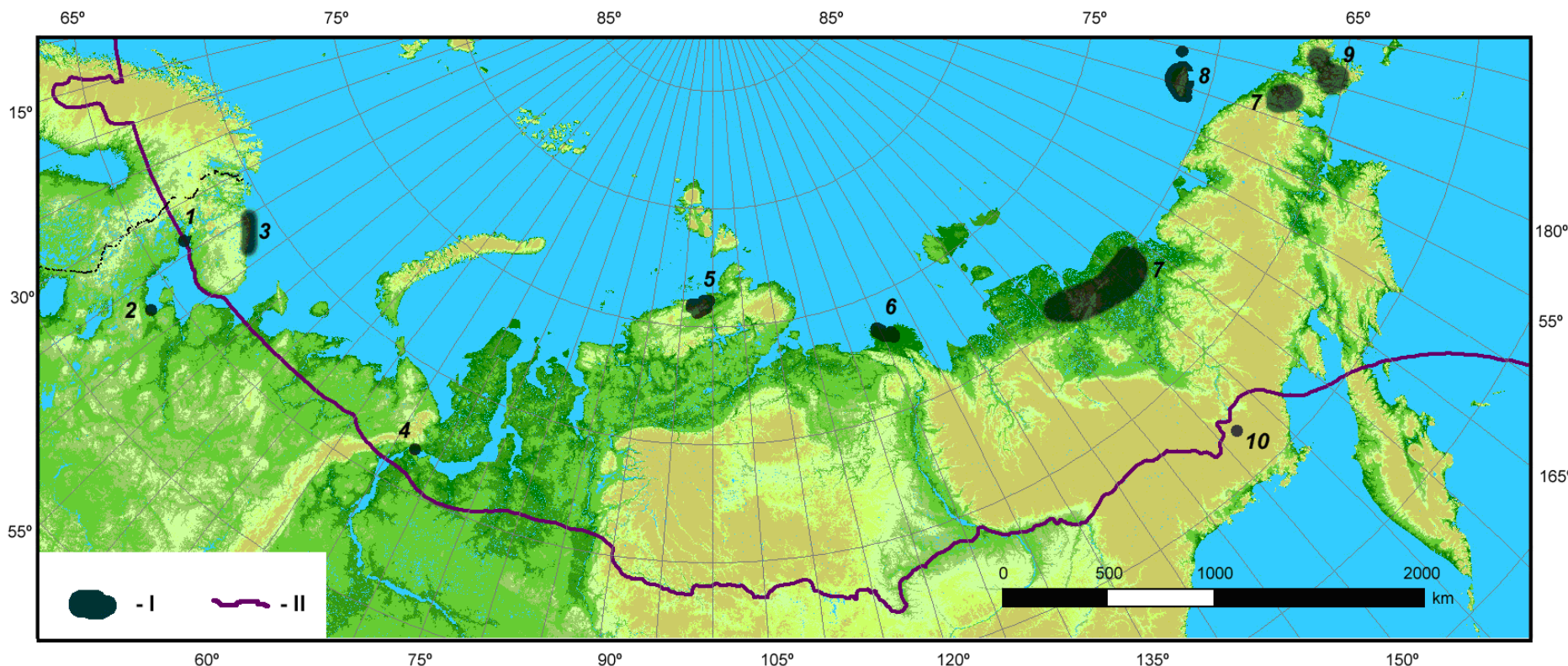
Distribution of monitoring objects and existence of observations in Russian Arctic



Nature reserves: 1 – Pasvik; 2 – Laplandsky; 3 – Kandalakshsky; 4 – Nenetsky; 5 – Gydansky; 6 – Bolshoy Arktichesky; 7 – Taimyrsky; 8 – Putoransky; 9 – Ust-Lensky; 10 – Ostrov Vrangelya; 11 – Magadansky; 12 – Komandorsky; 13 – Koryaksky.

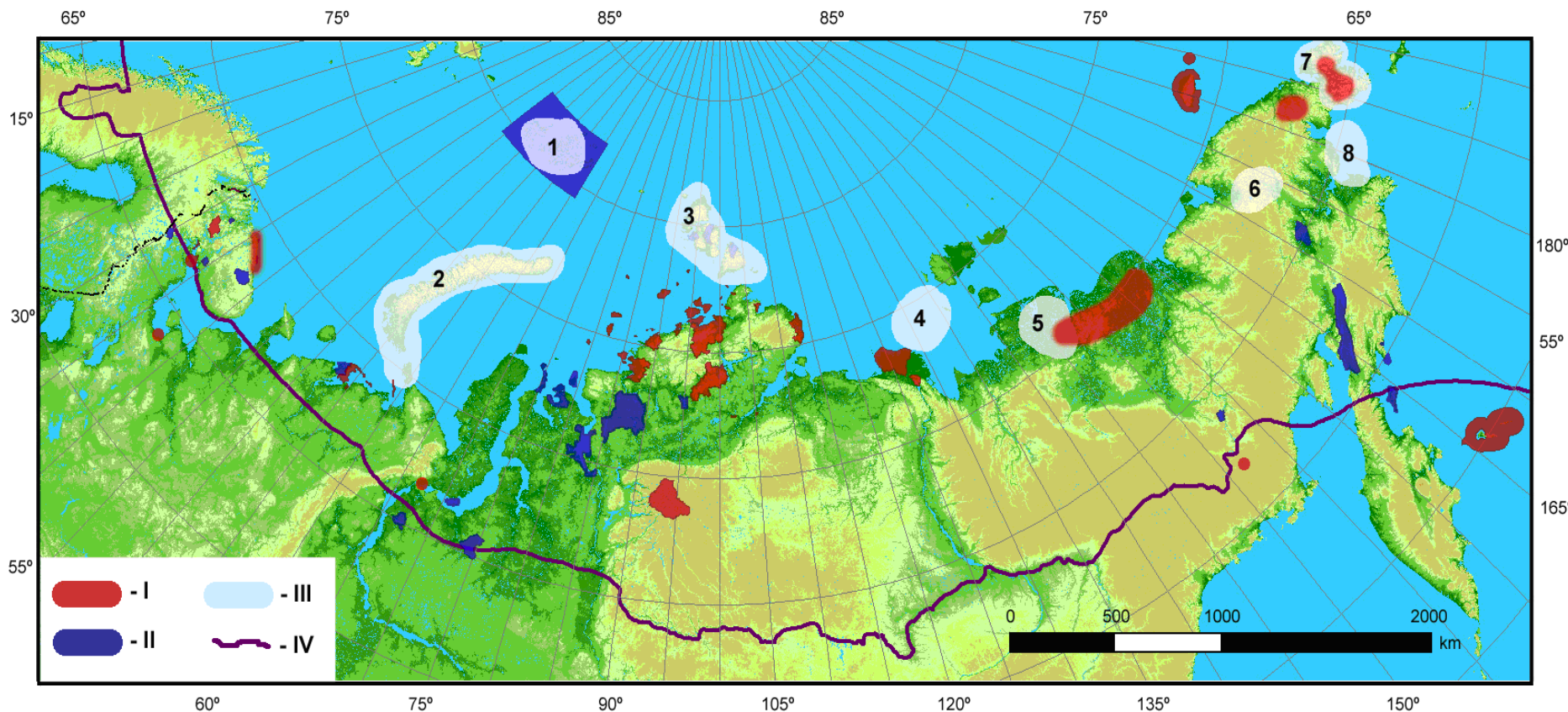
I – Reindeer; II – Invertebrates; III – Predacious; IV – Brown bear; V – Polar bear; VI – Marine mammals; VII – Marine birds; VIII – Land birds; IX – No object; X – No information/no observations; XI – CAFF border

Disposition of main scientific stations in Russian Arctic



- I. Stations: 1 – The MSU Biological station in the White sea; 2 – Onezhsky bay of the White sea; 3 – Kolsky peninsula; 4 – Station of ecological scientific research (Labytnangy); 5 – Taimyr; 6 – Samoilovsky island; 7 – Tundras of Yakutia and Chukotka; 8 – Ostrov Vrangelya; 9 – Chukotka peninsula; 10 – Station “Orotuk”
- II. CAFF border

Territories, recommended to be included in CBMP having no regular observations



I. Observations are conducted

II. No observations, but there is a potential

III. Gaps in observations: 1 - Zemlya Frantsa-Iosifa; 2 – Novaya Zemlya; 3 – Severnaya Zemlya; 4 – the Great Siberian ice-hole; 5 – Interfluve of rivers Khroma and Indigirka; 6 – the central Chukotka, including lake Ylgygytgyn; 7 – Chukotsky peninsula, including Koluchinskaya guba and surrounding waters; 8 – Anadyrski bay, including Sirenikovskaya ice-hole. IV. CAFF border