



WORLD HERITAGE OUTLOOK

A conservation assessment of all
natural World Heritage sites

worldheritageoutlook.iucn.org





IUCN WORLD COMMISSION ON PROTECTED AREAS

- Cyril Kormos
- IUCN WCPA Vice Chair, WH



- Tilman Jaeger
- IUCN WCPA
- Consultant / Formerly staff at UNESCO MAB and IUCN WH Programme



IUCN WORLD HERITAGE OUTLOOK

First global assessment of natural World Heritage launched in 2014

- All 228 sites assessed (in 2014)
- 500 experts worldwide
- More than 3 years in the making





DIFFERENT AND ADDITIONAL TO PERIODIC REPORTING BY STATES PARTIES.

- Desk reviews, *not* site based.
- Independent experts – not government experts
- More frequent – every 3 years vs. 6 years.
- Lives online at: <http://worldheritageoutlook.iucn.org/> - can be updated any time.



IUCN WORLD HERITAGE OUTLOOK

Recognizing success

- 100% natural sites assessed
- Focus on all sites
 - Help sites with management challenges
 - Bring visibility to well-managed sites





CONSERVATION OUTLOOK ASSESSMENTS

Projection into the future of the potential for a site to conserve its values over time

Three elements are assessed

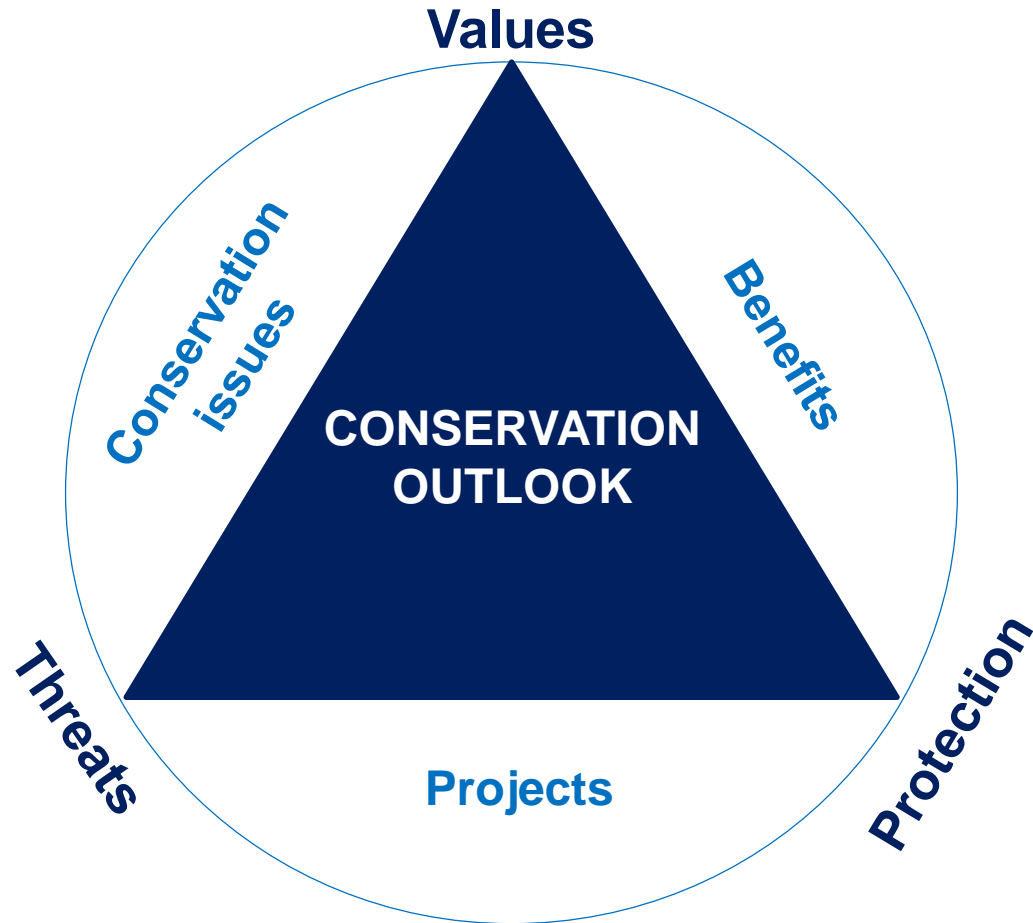
- State and trends of Outstanding Universal **Values**
- **Threats** to these values
- Effectiveness of **protection and management**



CONSERVATION OUTLOOK ASSESSMENTS

Additional information is compiled (though needs to be more systematic in the future).

- Conservation issues
- Benefits
- Projects / project needs





1 CURRENT STATE AND TRENDS OF VALUES

Rating

Definition

Good

All elements necessary to maintain the site's values are essentially intact, and their overall condition is stable or improving. Available evidence indicates only minor, if any, disturbance to the values of the site.

Low Concern

Some loss or alteration of the elements necessary to maintain the site's values has occurred, but their overall condition is stable or improving and is not causing persistent or substantial effects on the values of the site.

High Concern

Loss or alteration of many elements necessary to maintain site values has occurred, which is leading to a significant reduction in the values of the site.

Critical

Loss or alteration of a majority of elements necessary to maintain site values has occurred and has caused a major loss of the values of the site.



2 THREATS

Rating	Definition
Very Low Threat	Few or no threats are evident and accepted predictions indicate that negative impacts on the site's values and integrity are likely to be minor.
Low Threat	Some minor threats are evident and there is concern that based on accepted predictions there are likely to be some localized but reversible negative impacts on the site's values and integrity.
High Threat	There are clear threats to the site, and current and/or predicted future impacts are likely to result in significant negative effects on the site's values and integrity.
Very High Threat	The threats to the site are very high, and current and/or predicted future impacts are likely to result in the irreversible loss of the majority of the site's values and its integrity.
Data Deficient	Available evidence is insufficient to draw a conclusion.



3 PROTECTION AND MANAGEMENT

Rating	Definition
Highly Effective	The protection and management system under implementation is effective and able to maintain the site's values and integrity. Aspects of site management can be regarded as being best-practice.
Effective	The protection and management system under implementation is adequate and is likely to essentially maintain the site's values and integrity over the medium-term. However, it may be insufficient to maintain the site's values and integrity over the long-term.
Some Concern	The protection and management system is not fully addressing the threats to the site's values, resulting in a number of conservation issues. However, these issues could be reversed and effectively addressed in the short-term if management capacity and/or protection are improved.
Serious Concern	The protection and management system shows major deficiencies and is unable to maintain the site's values and integrity over the short or long-term. Major interventions are required to enhance management capacity and/or protection.
Data Deficient	Available evidence is insufficient to draw a conclusion.



PROCESS

- Desk-based – prepared by independent experts (**WCPA**)
 - Best available information
- **Feedback on any of the assessments is welcome at any time!**





CONSULTATION





IUCN WORLD HERITAGE OUTLOOK 2014 RESULTS

IUCN WORLD HERITAGE OUTLOOK 2014





WORLD HERITAGE SITES OVERLAPPING WITH BIOSPHERE RESERVES

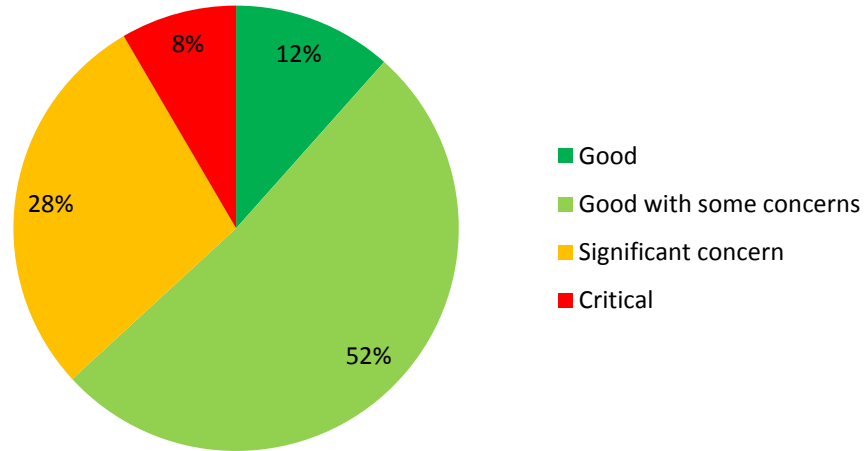
- 95 Biosphere Reserves overlap with natural World Heritage sites
- A few more overlap with cultural sites (cultural landscapes)





WORLD HERITAGE SITES OVERLAPPING WITH BIOSPHERE RESERVES

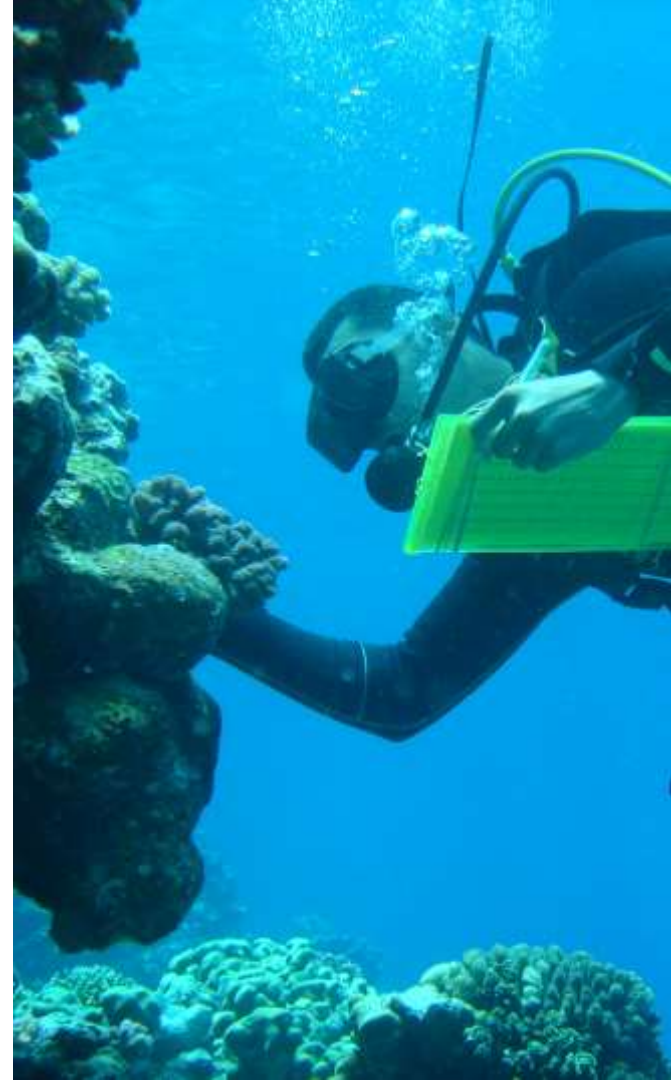
- Results for Biosphere Reserves overlapping with WH sites – very similar to overall picture for all natural WH sites





NEXT STEPS

- IUCN World Heritage Outlook 2017
- Site-focused partnerships to promote action on the ground
- Potential links with monitoring processes for Biosphere Reserves?



Thank you!

