

Jeju Island with 4 International Protected Area Designations

Do-Soon Cho

Professor at the Catholic Univ. of Korea

Co-Chair of MAB National Committee of R. Korea

Summit of Mt. Hallasan

(Biosphere Reserve, World Heritage, Global Geopark)



Baeknokdam Crater at the Summit of Mt. Hallasan



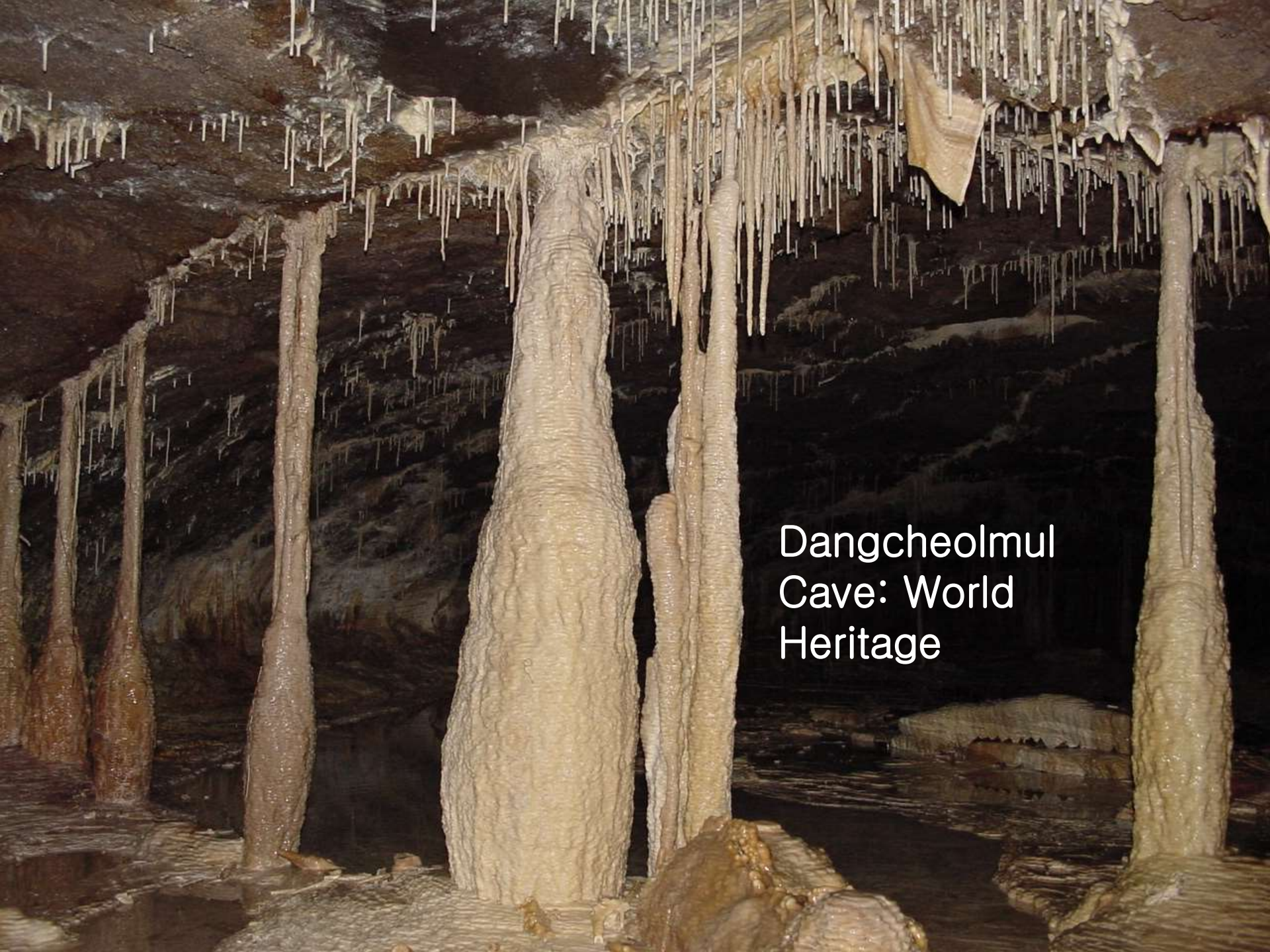
Muljanggal Crater Wetland in Mt. Hallasan

(Biopshere Reserve, World Heritage, Ramsar site,
Global Geopark)

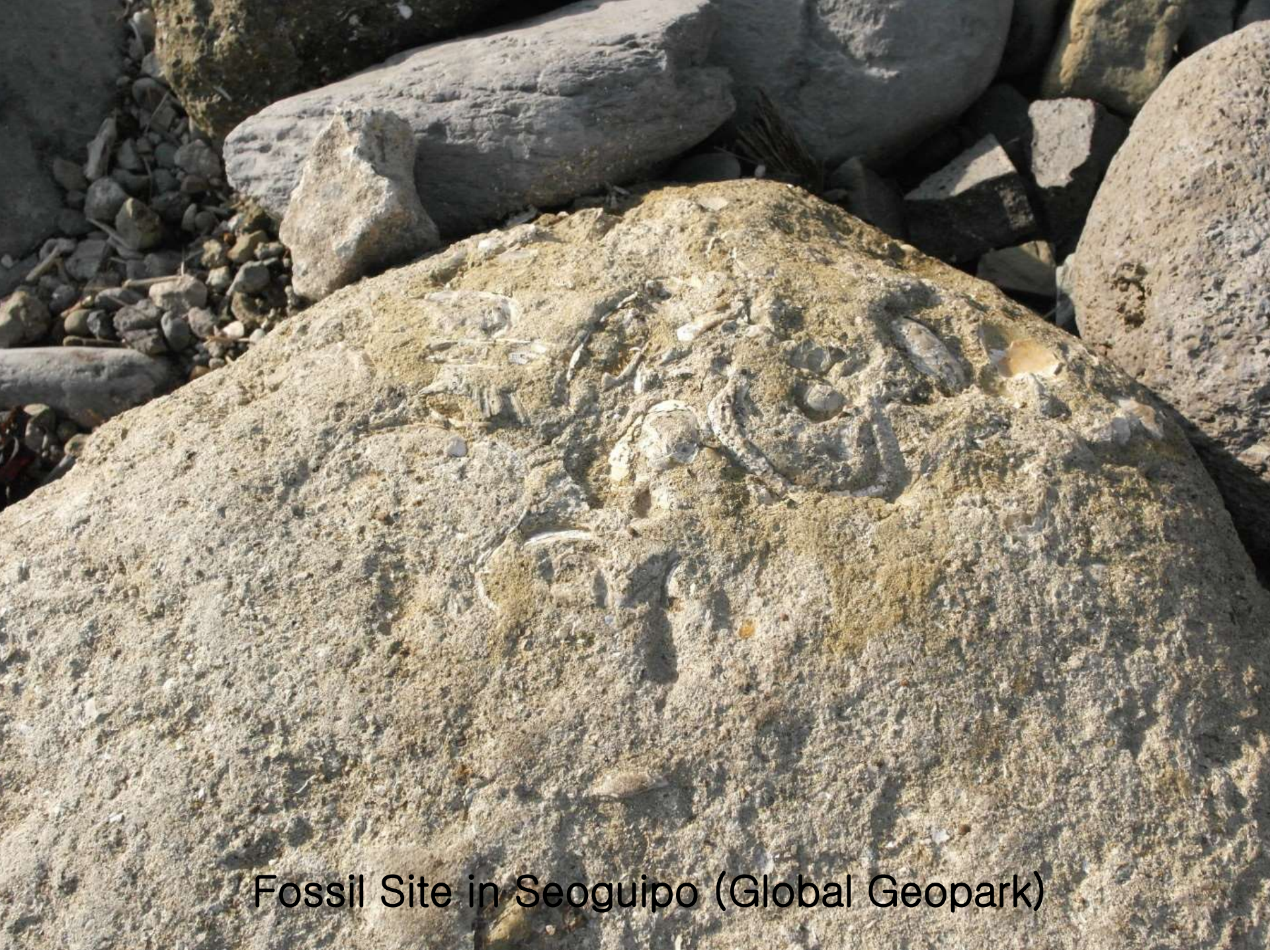


Seongsan Ilchulbong Tuff Cone (World Heritage)





Dangcheolmul
Cave: World
Heritage



Fossil Site in Seouipopo (Global Geopark)

Jeju Free International City Project



The Seven Leading Projects of the JFIC (2001)

International Protected Areas in Jeju Island

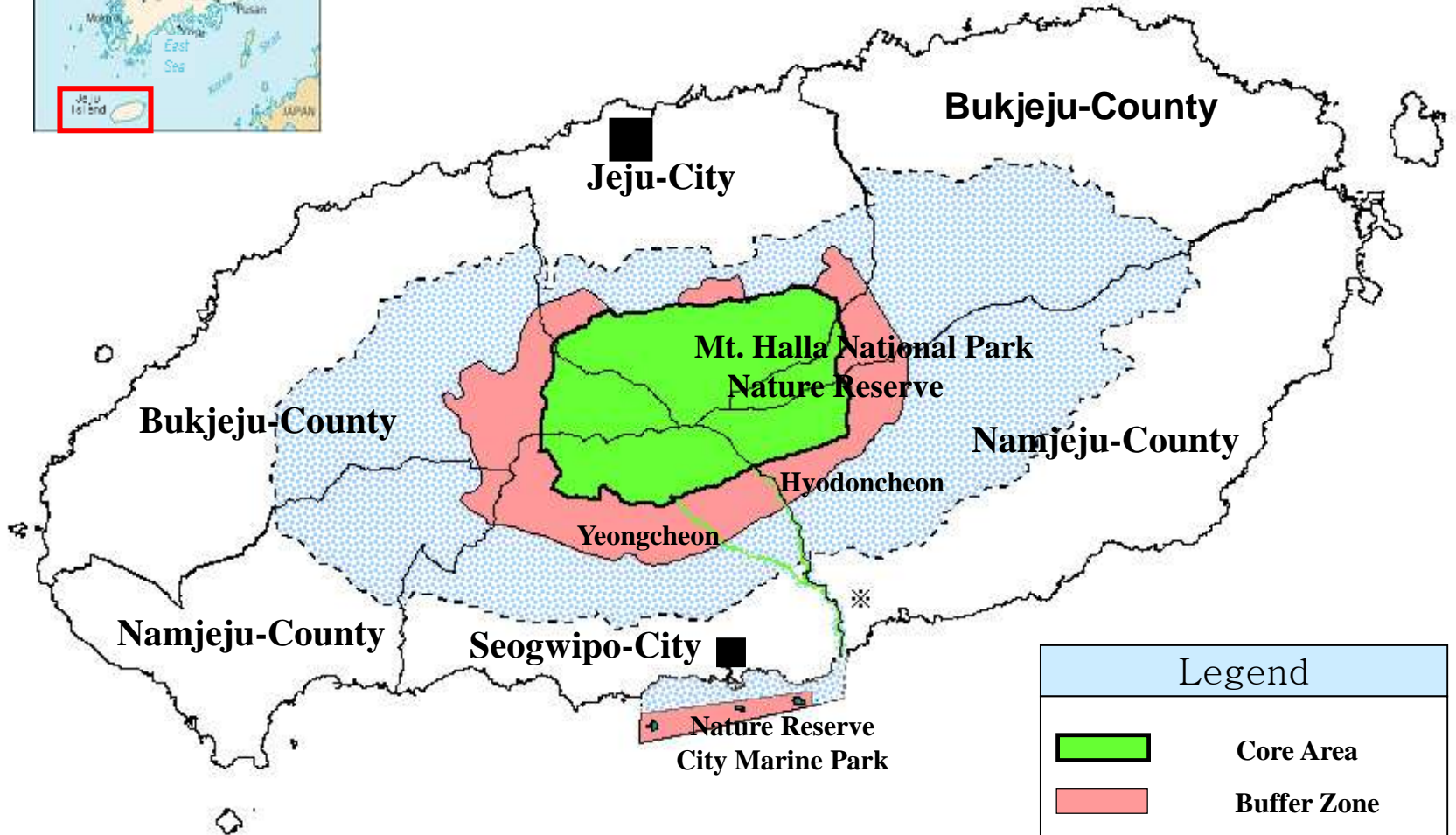
Protected Area Type	No. in the World	No. in the R. Korea	No. in Jeju Island	Names, Year of designation, Area
Biosphere Reserves	651	5	1	Jeju Island (2002) (830.94 km ² : Core 151,58 ha, Buffer 14,601 ha, Transition 53,335 ha)
World Natural + Mixed Heritages	197 + 32	1	1	Jeju Volcanic Island and Lave Tubes (2007) (Property zone 94.75 km ² + Buffer zone 92.66 km ²)
Global Geoparks	120	1	1	Jeju Island (2010) (1,847 km ²)
Ramsar Sites	2,231	21	5	Mulyeongari (2006) (31 ha) Muljangori (2008) (63 ha) 1100m Highland (2009) (13 ha) Dongbaekdongsan (2011) (59 ha) Sumeunmulbaengdui (2015) (118 ha)

Zonation Map of Jeju Island Biosphere Reserve






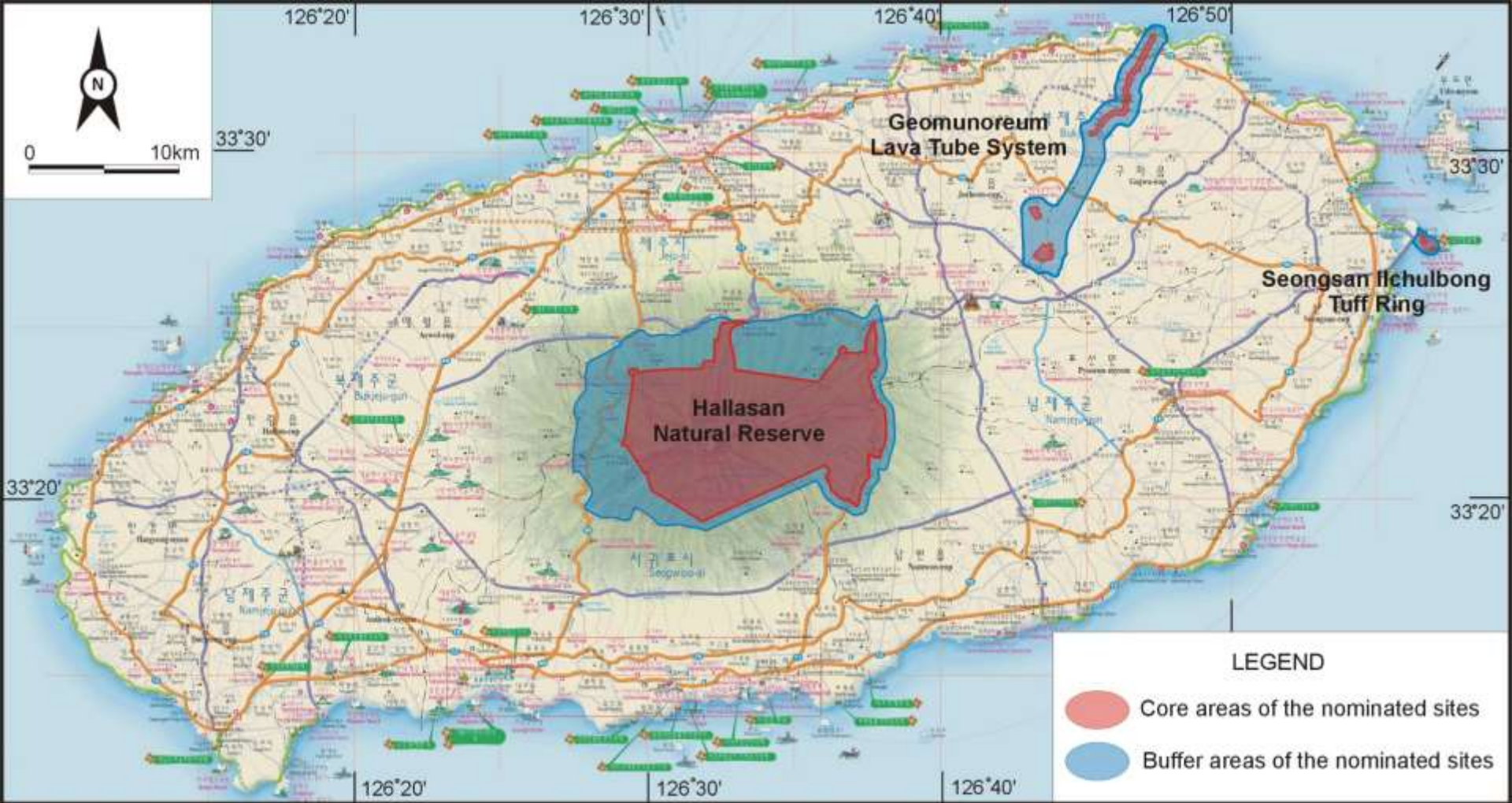
West Sea

West Sea



※ Two streams are surrounded by 500m transition area.

Legend	
	Core Area
	Buffer Zone
	Transition Area



Jeju Volcanic Island and Lava Tubes World Heritage

Representative Sites for Jeju Island Global Geopark



International Meetings held in Jeju

- 2005: 9th EABRN meeting
- 2009: 21st MAB ICC meeting
- 2009: IUCN International Workshop on CBD
POWPA
- 2012: 5th IUCN World Conservation
Congress

9th EABRN Meeting (2005)

The 9th Meeting of the *East Asian Biosphere Reserve Network*

제9차 동북아 생물권보전지역 네트워크 회의 

30 Aug. - 3 Sep. 2005 Jeju Island Biosphere Reserve, ROK / 2005. 8.30 - 9. 3 제주국제컨벤션센터

Co-organizers: Government of ROK, Korean National Commission for UNESCO, MAB National Committee of ROK, and UNESCO Regional Offices in Beijing and Jakarta. 제주도 유네스코한국위원회, MAB 한국위원회, 유네스코 북경사무소 · 자카르타 사무소



CONSERVATION CONGRESS JEJU 2012



ELECTIONS – ELECCIONES – ÉLECTIONS

Candidates for Regional Councilor / **Candidatos a C**
Regional / Candidats au poste de Conseiller rég
Africa / África / Afrique



1. **Mafa Chipeta** (7)
Malawi



2. **Mamadou Diallo** (8)
Senegal / Sénégal



3. **Brahim Haddane** (8)
Morocco / **Marruecos** / Maroc



4. **Eriya Jesca Osuna** (6)
Uganda / Ouganda



유네스코 "아·태 생물권보전지역 국제협력사업" 협약식
 Special Self-Governing Provincial Government-UNESCO
 of Signature for "JEJU INITIATIVE" FIT Project



29(금) 11:00, 제주특별자치도 / 29 September 2006 · Jeju, Korea

세계가 하나되는 곳
 세계 평화의 섬 제주
 Jeju Island



A group of men in suits are seated at a long table covered with a yellow cloth, signing documents. The table is equipped with microphones and nameplates.

Nameplates on the table include:

- UNESCO 한국위원회 사무총장 이삼열 (Secretary General of the UNESCO Korea Committee, Lee Sam-yeol)
- UNESCO Mr. Hubert Günz
- 제주특별자치도 김태환 (Jeju Special Self-Governing Provincial Government, Kim Tae-hwan)
- 제주특별자치도 최영철 (Jeju Special Self-Governing Provincial Government, Choi Young-cheol)
- 제주특별자치도 최영철 (Jeju Special Self-Governing Provincial Government, Choi Young-cheol)
- UNESCO Qunli Han

JIBR Management System

- JIBR Management Committee based on Jeju Provincial Ordinance (from 2003): 21 members
- Jeju Province Management Committee for UNESCO Registered Heritages based on Jeju Provincial Ordinance (from 2012): Biosphere Reserve Subcommittee with 16 members
- Office of Jeju World Natural Heritage Site Management was established (in 2012)
- Office of Jeju World Natural Heritage Site Management and Mt. Hallasan Research Institute were combined into World Heritage · Mt. Hallasan Research Institute (in 2014)

World Heritage·Mt. Hallasan Research Institute

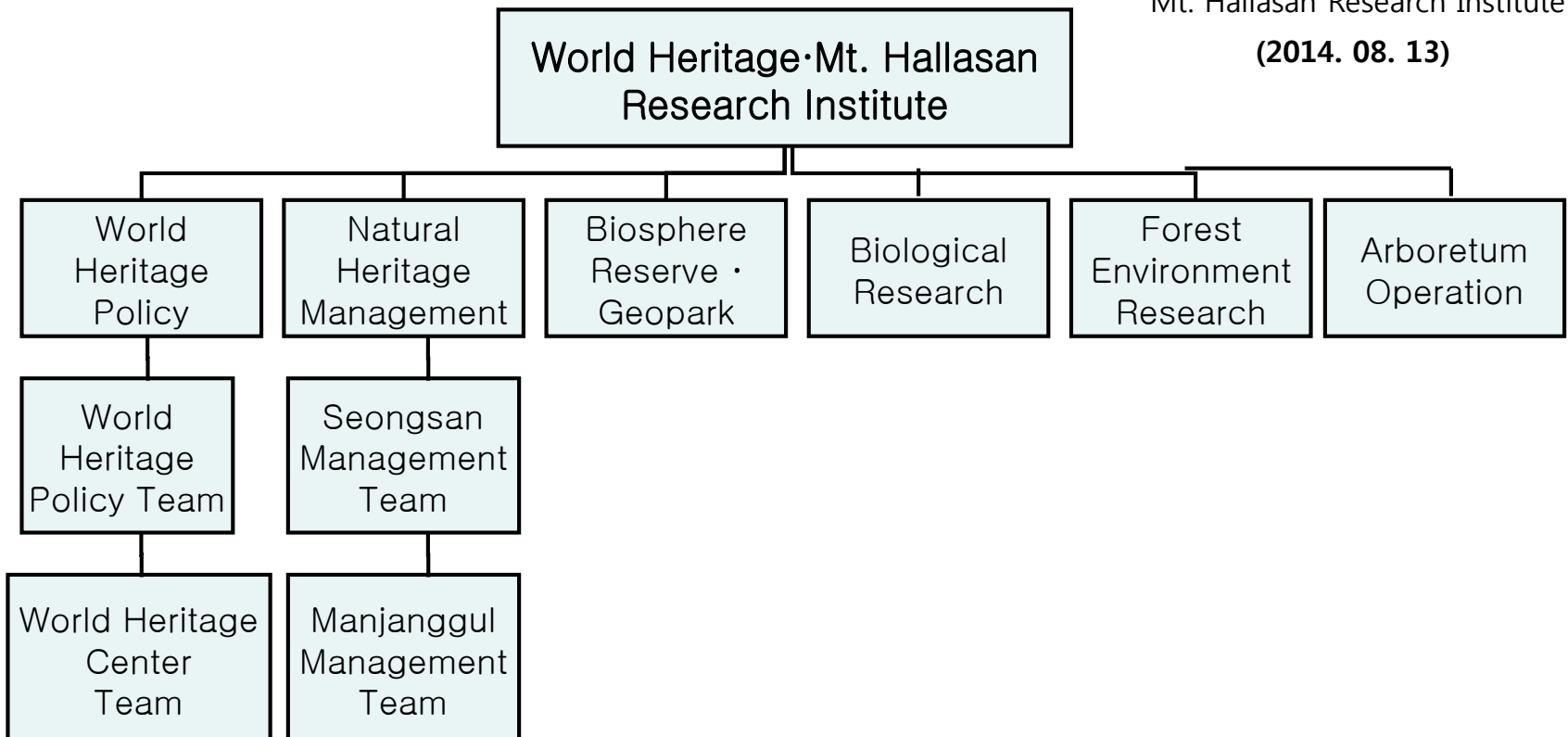
Structure of the Institute

UNESCO Registered Heritage
Management Team

+

Mt. Hallasan Research Institute

(2014. 08. 13)







Challenges in JIBR Management

- Relative lack of recognition of biosphere reserve compared to world heritage
- More investment has been put into world heritage management than biosphere reserve management
- Sustainable development function is weak since populated areas are located outside of the JIBR and most agricultural and fishing activities are carried out outside of JIBR.
- World heritage, global geopark, and Ramsar sites can be used for attracting tourists and conservation, but biosphere reserves need bottom-up approach for sustainable development function for larger areas.

Challenges and Opportunities in JIBR Management from Integrated Management

- JIBR has been actually benefited by the integrated management since 2012 by the creation of new administration unit.
- Integrated management was possible because Jeju Self-Governing Province has some autonomy.
- There was less collaboration of Jeju Province with central governmental agencies.
- Different protected areas can be effectively managed when protected areas are overlapping.
- BR and Geopark can be benefited by similar methodology since the overall purposes are similar.
- When JIBR is expanded to include the whole Jeju Island, there will be more opportunities for activities of sustainable development.