

2017 MAB YOUTH FORUM

Pre-Forum Survey Report



JANUARY 2018

Contents

Report Team

Introduction

Section 1: General Information5

Section 2: Involvement with BR/MAB Programme11

Section 3: Priorities in BR Development21

Thematic Area 1: Research 223

Thematic Area 2: Civil Society27

Thematic Area 3: Livelihood.....29

Report Team

Project Officer:

Philippe Pypaert

Team members (in alphabetical order):

Chorong Ahn

Eun-Young Hwangbo

Jing Fang

Lauren Bohatka

Monica Espinoza Miralles

Pietro Reviglio

Cover Photo:

Group photo of the 2017 MAB YOUTH FORUM

© Christian Leone

Introduction

On 17-23 September 2017, the MAB Youth Forum in Italy brought together 282 youth delegates from over 138 Biosphere Reserves in 84 countries, who agreed on a shared vision concerning their engagement in the MAB programme of UNESCO (see a separate report on the main outcomes of the Forum, including its final declaration).

An online survey was conducted before the event itself, with the aim of getting a better understanding of MAB Youth's expectation for the forum, and making then the forum potentially more productive and fruitful for them.

235 MAB Youth (effectively registered to the Forum) contributed to the survey, which is a fantastic participation rate (83% of responses). In this sense, the survey results can, to a large extent, be considered as highly representative of the expectations and perspectives of the participants to the MAB Youth Forum, even if Europe and North America were proportionally over represented in the survey. This is probably due to the fact that many participants from Africa, Arab States and Latin America registered very late, often too late to be in position to respond to the online survey.

The Pre-Event survey was built around 50 questions grouped in 6 different sections. The first one referred to general information on the respondents, while the second section questioned their understanding of and involvement with the MAB programme and its World Network of Biosphere Reserves (WNBR), and the third one their experience with the Biosphere Reserve they belong to. The last three sections were intended to investigate a little bit more in detail their personal experience as members of the civil society, as researchers and as worker/entrepreneur involved in livelihood projects in their Biosphere Reserve.

We believe this reports provides important and inspiring first-hand insights on MAB Youth's understanding of the MAB Programme, its present strategy and the Lima Action Plan, but also a photography of MAB Youth main concerns and challenges, which should be read as a reference by all MAB stakeholders interested to take more concrete steps to scale up youth engagement in the context of the MAB programme and its endeavor to support Member States to achieve the 2030 Agenda for Sustainable Development.

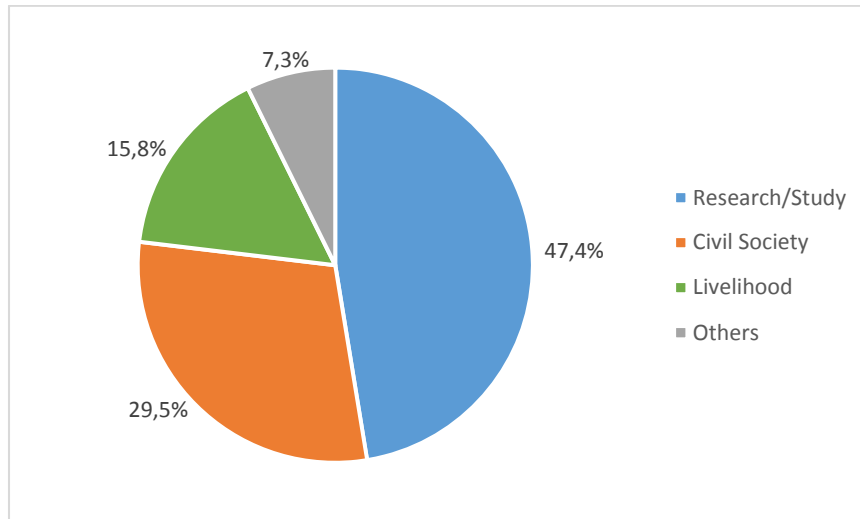
This report is the product of a collaborative effort which involved Monica Espinoza Miralles and Pietro Reviglio in the conception and dissemination of the online survey, and Chorong Ahn, Eun-Young Hwangbo and Jing Fang in the analysis of the responses received and the elaboration of the present report. I also would like to sincerely thank all delegates in the 2017 MAB Youth Forum who accepted to contribute to this collective effort, which will for sure have an impact on the future of the MAB Programme and its engagement with Youth.

Philippe Pypaert
January 2018

Section 1: General Information

Category of respondents

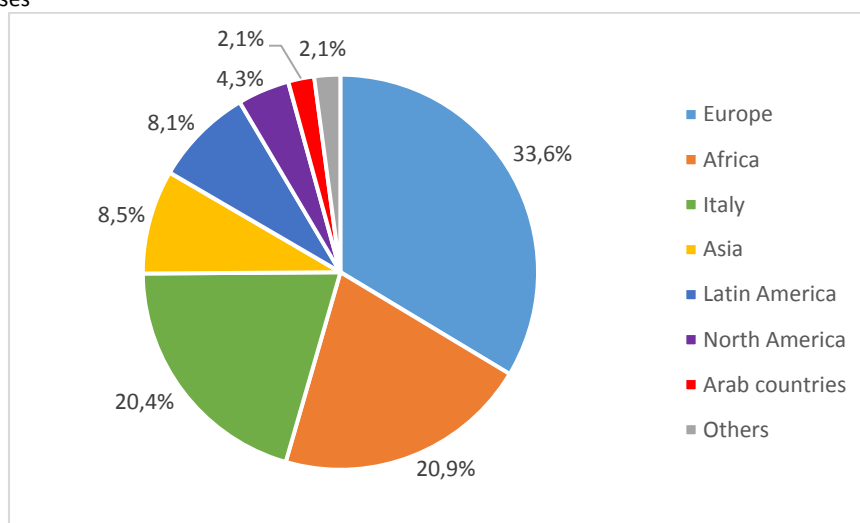
234 valid responses



Comment: About 50% of the respondents define themselves as “researchers”, and so did in the same proportion the participants in the MAB Youth Forum. This is not really surprising as in many countries BRs are still considered in priority as protected areas where a lot of researches are taking place. There is de facto a kind of dominancy of researchers in the survey, and this should be taken into consideration when analyzing replies to other questions, such as for example the one on “What are the points of the Lima Action Plan that you care the most about?”, for which “research and learning” was the most frequent response (the consequence of a logical high correlation with a big population of researchers). The “others” category includes participants who could not define themselves according to one category only.

Region

235 valid responses



Comment: This graphic shows the regional distribution of respondents. North America and Europe amount for around 58% of the responses, while Africa has a response rate of around 21%. Both Asia and Latin America have lower response rate (9%) and Arab States are definitely very low. This

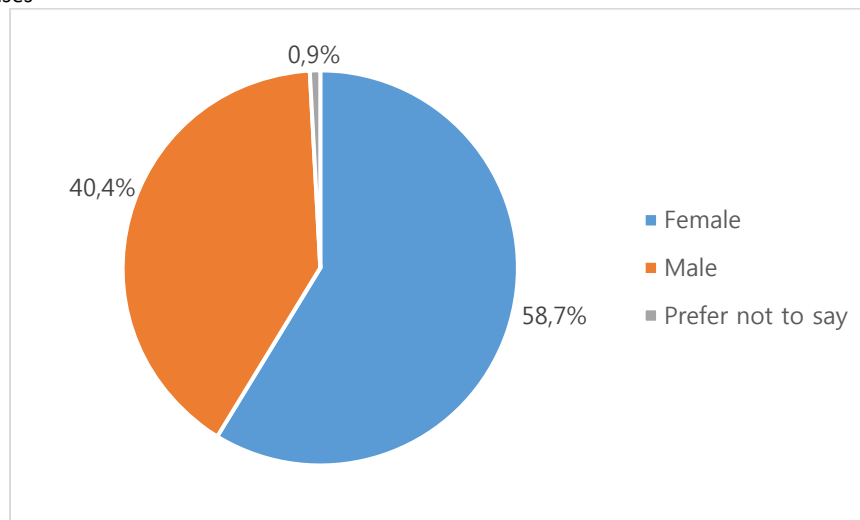
distribution does not reflect properly the real distribution per region of participants who effectively attended the Forum. Taking into consideration the fact that the Forum was organized in Italy and that it attracted obviously a high number of young Italians (76), belonging to Europe, the number of countries and the number of Biosphere Reserves represented per region were in proportion with the number of countries and Biosphere Reserves as they are distributed per region in the WNBR. The MAB Youth Forum was therefore highly representative of the diversity and richness of the MAB WNBR, as confirmed by the following table:

Region	Survey	Forum	WNBR
	%	%	%
Africa	20,9	17,9	23,3
Arab States	2,1	7,1	9,2
Asia and the Pacific	10,6	20,2	20,0
Europe & North America	58,3	40,5	30,0
Latin America and the Caribbean	8,1	14,3	17,5

The lower level of responses from Asia and the Pacific and from Latin America is also probably due to the fact that many inscriptions to the Forum from these countries arrived at the very last moment (in August 2017), when the online survey was already closed.

Gender

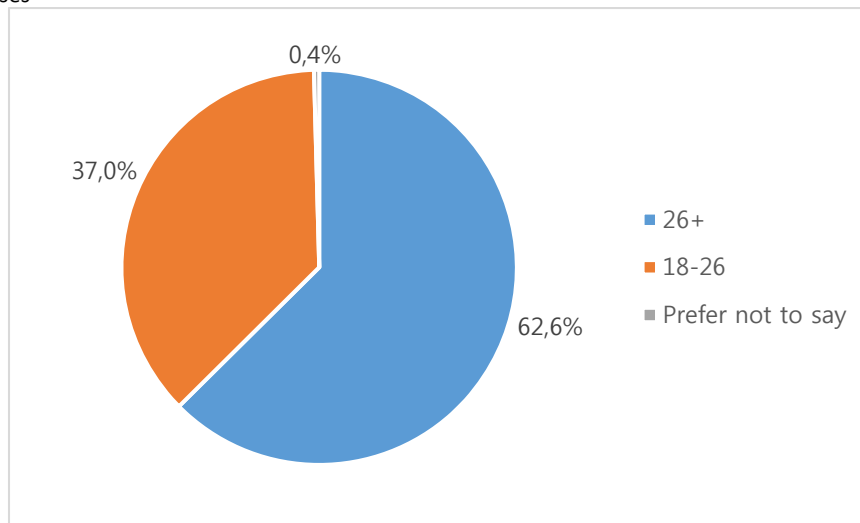
235 valid responses



Comment: This proportion between female (59%) and male (40%) respondents well corresponds to the gender distribution of actual participants in the MAB Youth Forum (61-39), as a confirmation of the fact that the survey is highly representative and thus can convey participants' perspectives effectively.

Age

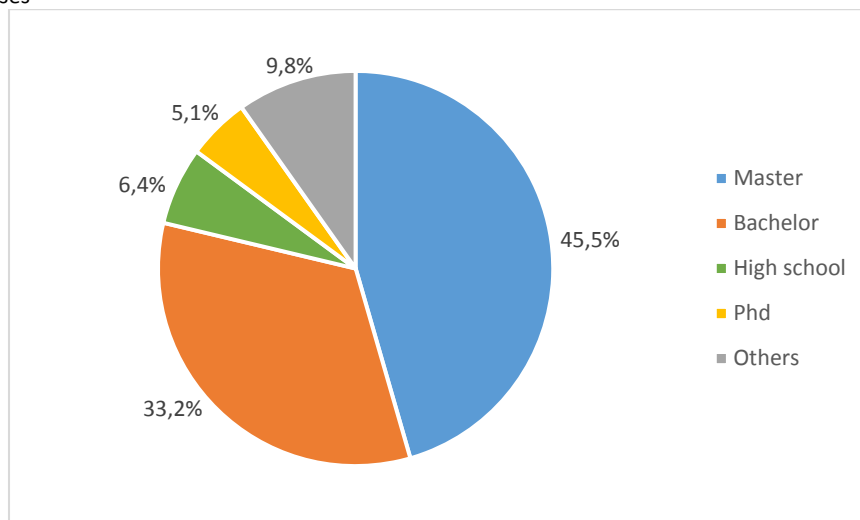
235 valid responses



Comment: Almost 2/3 of respondents were older than 26, and this is probably due to the fact that most of them have an higher education level and started to be active in their BR at a higher age. See also the following point on the education level of participants.

Education Level

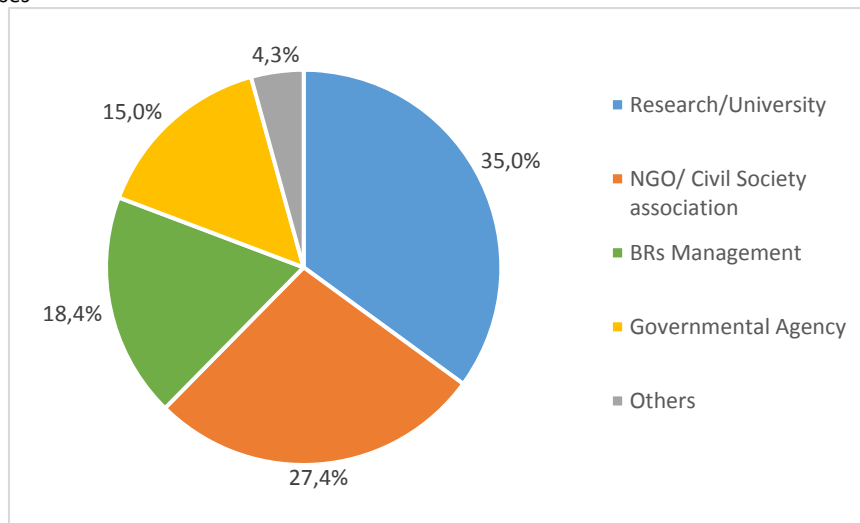
235 valid responses



Comment: Around 90% of respondents have higher education levels. In particular, more than 45% have a master degree, more than 33% have a bachelor and around 6% have PhDs. In the common sense, this suggests that most of them started being active in their BR at a later age, but these data also suggest that most of the participants have a good level of analytical skills, language skills as well as critical thinking skills, which should facilitate the holding of the Forum itself. It is also a matter of facts that young people having no sufficient knowledge of English have been “excluded” from the Forum, which had therefore a lower representation of categories such as young farmers or activists from remote rural areas not speaking English.

Affiliation

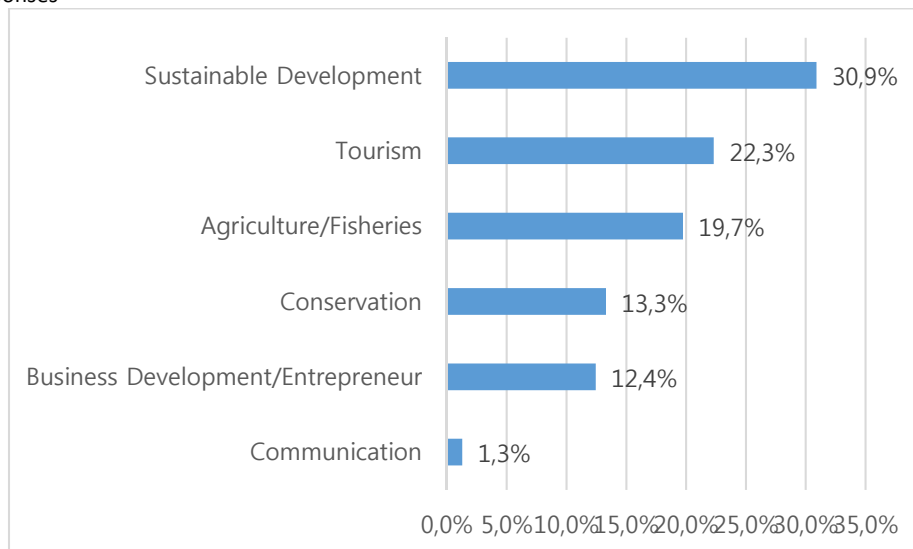
234 valid responses



Comment: As already anticipated, researchers formed the strongest group in terms of number of respondents, followed by those from NGO and civil society association (27%) as well as those from BRs management entities (18%), while those from governmental agency only represent a smaller part. This is in perfect line with the efforts the organizers made to involve participants in the forum showing a strong connection to Biosphere Reserves and local communities and developing concrete experiences with them. This, in turn, will have an influence on the responses to questions related to priority areas of the Lima Action Plan, or their vision of governance issues, etc.

Field of Interest

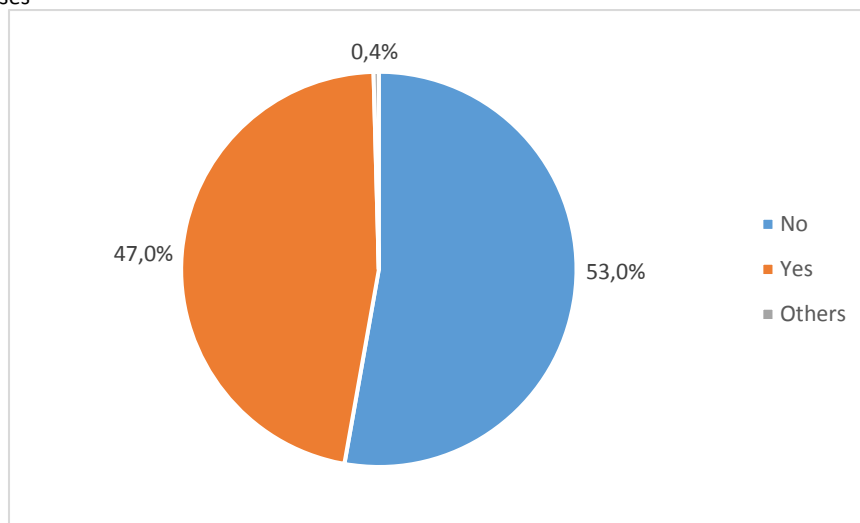
233 valid responses



Comment: Respondents showed a greater interest in issues related to sustainable development in their Biosphere Reserves, compared to what concerns functions such as nature/biodiversity conservation and logistic support (research, communication, education). To find the conditions for working and living in their Biosphere Reserves seems to be their clear priority.

Did you ever have any contact with any other BR?

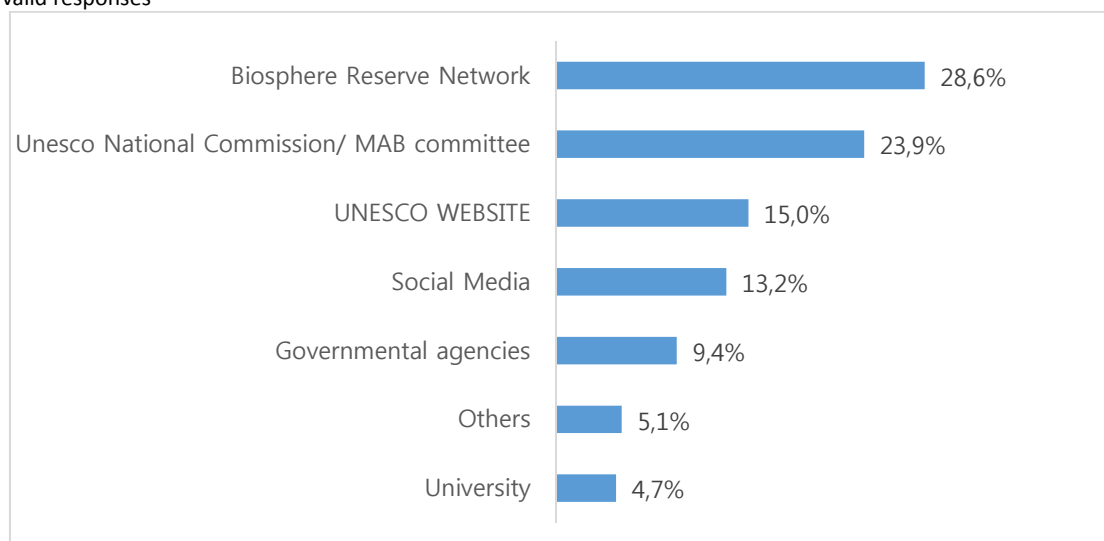
232 valid responses



Comment: Each category has pretty much the same rate with a slightly higher rate in the case of the “No” (53%). This, on one hand, embodies the necessity of creating opportunity for BRs to exchange and network, on the other hand, regarding those having already contacts with other BRs (47%), it could be interesting to explore further the modalities through which more effective contacts could be established among BRs in the future.

How did you get to know about the forum?

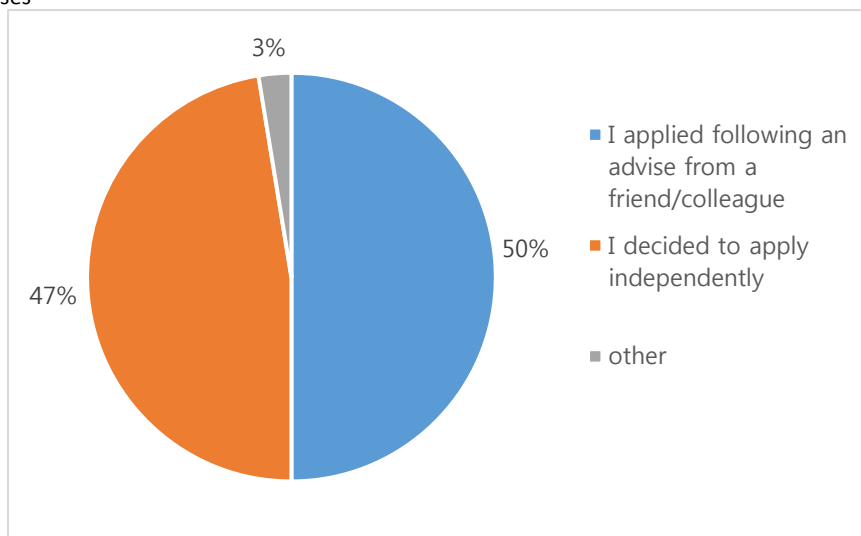
234 valid responses



Comment: The Biosphere Reserve network (29%), MAB National Committees (24%) and UNESCO website (15%) remain to be three main ways of propaganda for the forum. These data well reflect the efforts made by the organizers to write directly to all available addresses of Biosphere Reserves and MAB National Committees, with copies to National Commissions and Permanent Delegations, but also to post an announcement of the event on the web in various languages (English, French, Italian, Chinese, Spanish).

Who took the initiative to apply for the forum?

232 valid responses

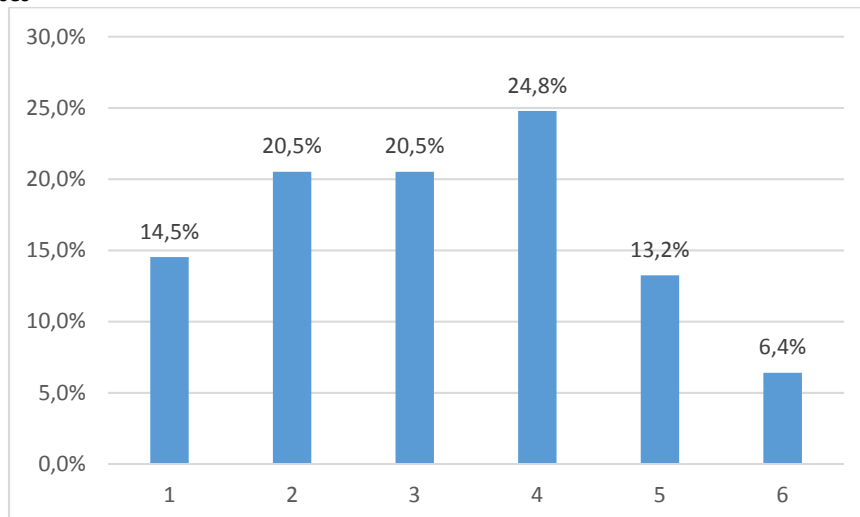


Comment: Each category has pretty much the same rate with a slightly lower rate in the case of the “decided to apply independently” (47%). On one hand, it indicates that participants who apply independently have access to more direct information channels and were also probably highly motivated from within. On the other hand, the high rate of participants who apply by following other’s advice either indicates that communicating through Biosphere Reserves and MAB National Committees also worked and helped reaching interested potential participants.

Section 2: Your Involvement with the MAB Programme

On a scale from 1 to 6, to what extent were you familiar with the MAB programme and the Lima Action Plan before applying to the Forum?

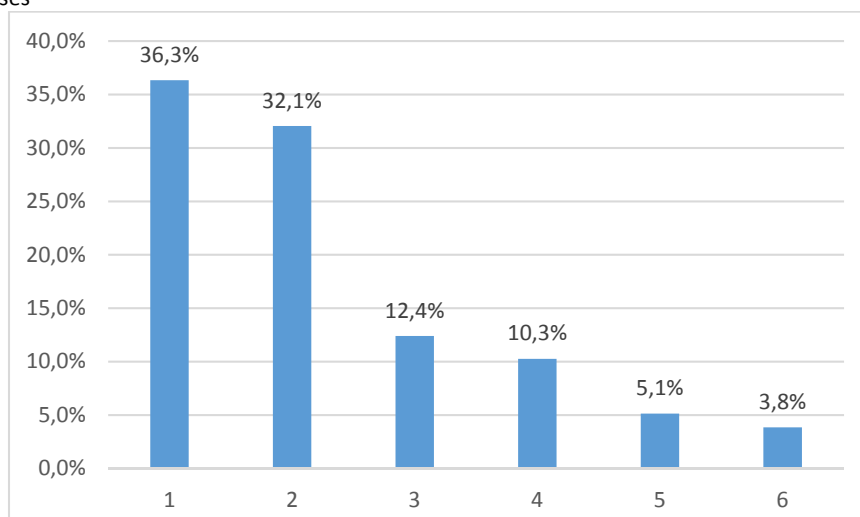
234 valid responses



Comment: If level 4-6 is defined as more familiar, while level 1-3 as less familiar, this means that Around 45% of respondents were already familiar with the MAB programme and the Lima Action Plan (LAP), but also that 55% were definitely less familiar with that. That is why all participants have been invited by the organizers to read a series of documents introducing these arguments (MAB Strategy 2015-2025, Lima Action Plan, publication by Swedish MAB NC, etc.).

On a scale from 1 to 6, to what extent do you think the youth in your Biosphere Reserve is familiar with the MAB programme and LAP?

234 valid responses

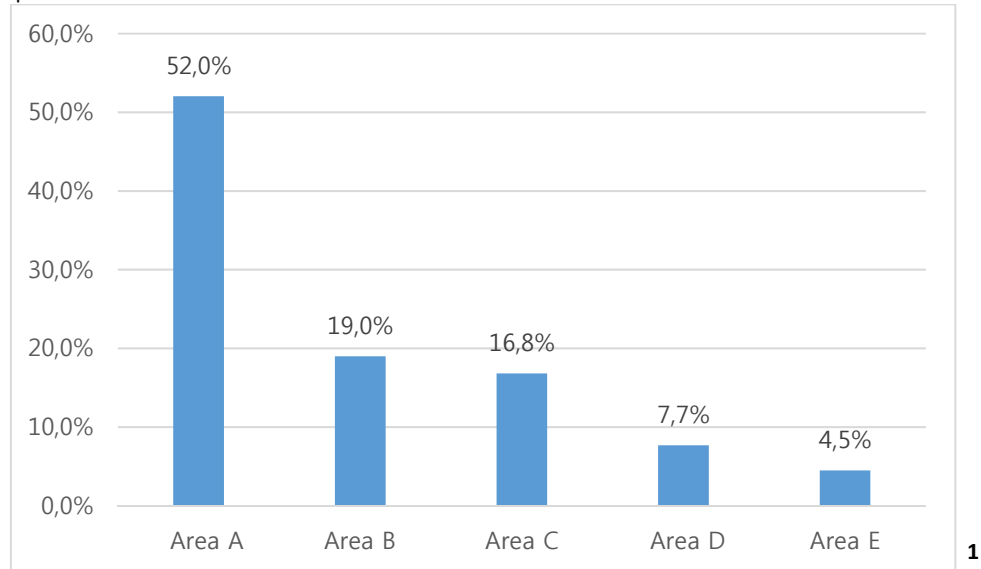


Comment: For the same question, when it comes to the youth in their BRs, the results differ greatly from the previous question. If level 4-6 is defined as *more familiar*, while level 1-3 as *less familiar*, only 19% of respondents think the youth in their BRs have a good understanding of the MAB programme and the Lima Action Plan, while 81% believe the opposite. Youth's familiarity with relevant frameworks, strategies and plan determines to a great extent their potential engagement. Hence, the organizers

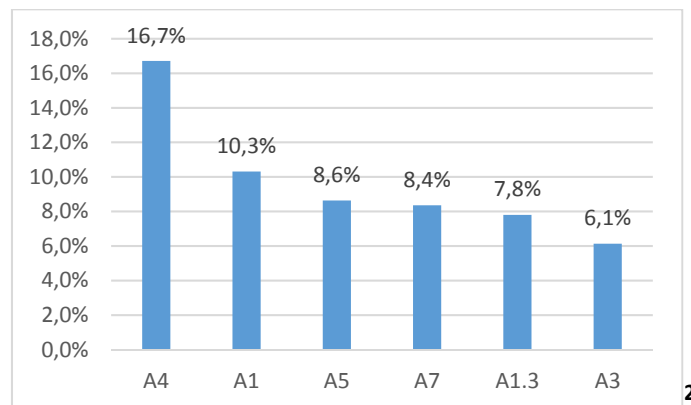
have decided to include in the programme of the Forum a series of sessions dedicated to a better understanding of these MAB foundations.

What are the points of the Lima Action Plan that you care the most about?

220 valid responses



Comment: Area A of around 52% is dominant, while Area B and Area C have a slightly larger proportion. From the chart, we can see respondents care the most about BR's as models for local sustainable development. Not surprisingly, most of them come from BRs, and their priority concerns are clear (see the chart below). Apart from Area A, participants pay much attention to networking and funding as well, which remains in any case the prerequisites of BR's development.



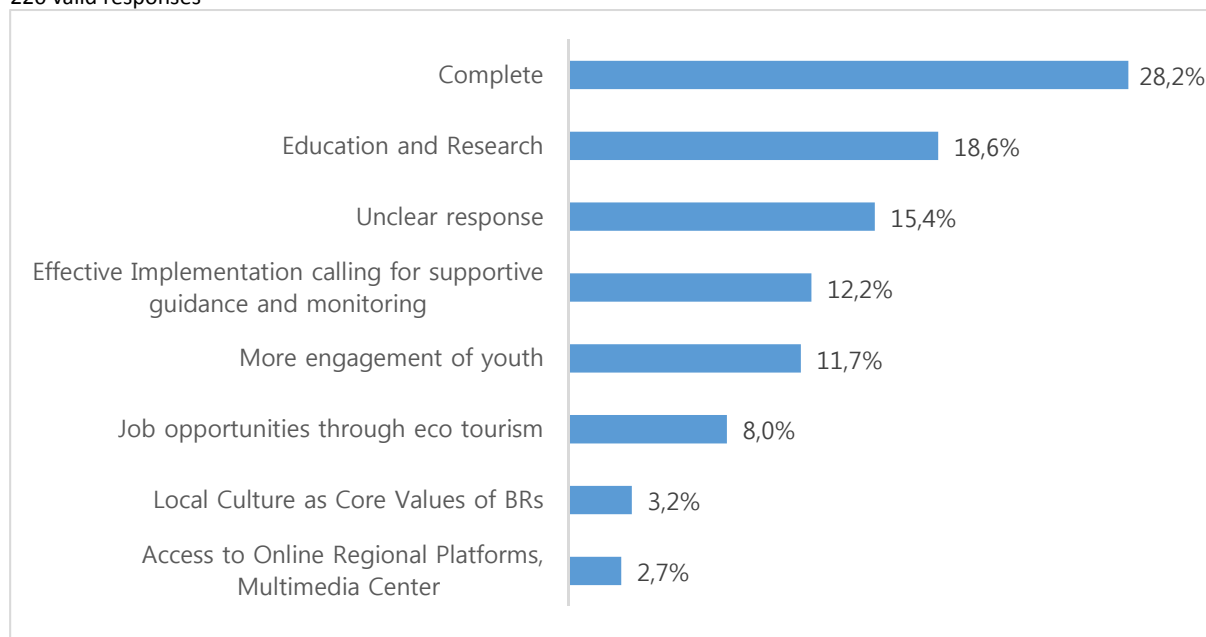
¹ Area A. The World Network of Biosphere Reserves consisting of effectively functioning models for sustainable Development. Area B. Inclusive, dynamic and result-oriented collaboration and networking within the MAB Programme and the WNBR. Area C. Effective external partnerships and sufficient and sustainable funding for the MAB Programme and the WNBR. Area D. Comprehensive, modern, open, and transparent communication, information and data sharing. Area E. Effective governance of and within the MAB Programme and the WNBR.

² A1. Biosphere Reserves (BRs) recognized as models contributing to the implementation of Sustainable Development Goals (SDGs) and Multilateral Environmental Agreements (MEAs). A1.3. Establish alliances at local, regional, international levels for biodiversity conservation and benefits to local people, taking into consideration the rights of indigenous people. A3 Integration of BRs into relevant legislation, policies and/or programmes complemented by support for the functioning of BRs. A4 Research, practical learning and training opportunities that support the management of BRs and sustainable development in BRs. A5. Financial sustainability of BRs. A7 BRs recognized as sources and stewards of ecosystem services.

Observing the list of outcomes or actions of Area A they care most, we are not surprised to see that the most frequent response is A4 (research and learning - 42% of respondents are from the “study/research” category, young people working mainly as researchers and dedicating their studies to MAB – Biosphere Reserves related issues), while any other category has relatively lower and much equal response rate (from 6 to 10%), focusing on BRs as SD models, conservation, legislations, financial sustainability as well as ecosystem services, all important components of BR development and promotion.

What do you think is still missing from the plan that you would like to be a priority in the MAB programme?

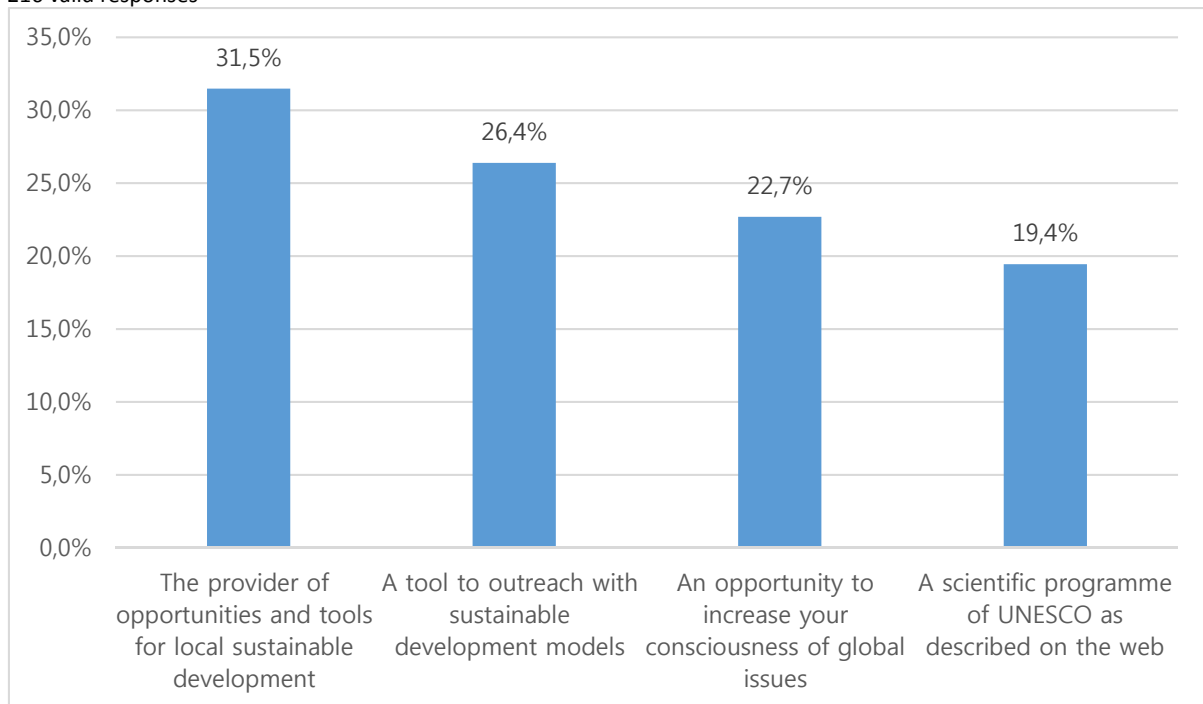
220 valid responses



Comment: The responses to this open question have been grouped in the 8 categories as showed above. Respondents who think that the Lima action plan is complete are dominant, in particular if we exclude those 18,6 % who did not provide a clearly understandable reply. It should be also noted that most of the elements mentioned by the respondents are effectively not absent in the LAP. The expression “missing” needs to be interpreted more as an indication of concern (“Will this be really implemented through the LAP?”), of priority attention to be paid in the course of implementation (which is left to the many stakeholders involved at local, national and international level) to aspects such as education and research, monitoring, engagement with Youth, job opportunities through tourism, etc. Their focus again is on concrete actions to be undertaken mainly at the level of BRs.

What is for you the MAB programme?

216 valid responses

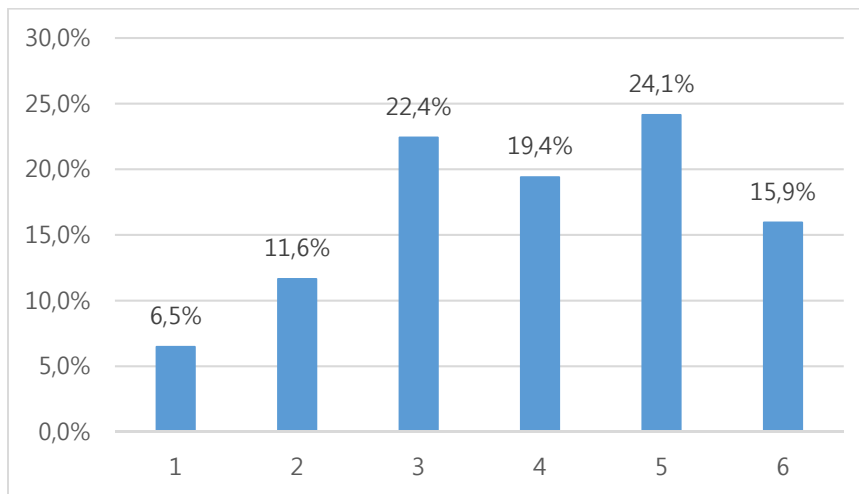


Comment: Here again the task of summarizing the responses to an open question was not easy, and the above four main categories were proposed to interpret these responses. Each category has a pretty much equal response rate with a relatively higher score for the replies “*Regarding the MAB programme as opportunities and tools for local sustainable development*”, in particular if we exclude the 19,4 % of respondents who provided a reply clearly “copied” from MAB official documents. It is interesting to note that, together with the focus on LOCAL sustainable development we expected (considering the affiliation of respondents to BRs), the other 2 relevant categories of responses indicate a clear reference to more complex concepts and ambitious ideals. On one hand, 26,4 % of them see the MAB programme as a tool to outreach, to impact not only their local reality but the entire society surrounding them. If BRs are models of Sustainable Development, these models need to inspire communities, or even policy makers, not confined within the borders of BRs! If we do that together, as part of a World Network, we are definitely stronger!

And in a complementary way 22,7 % of them think that, while anchoring their action in a local territory, the programme offer them a concrete opportunity to better inscribe their action in a global vision (“Think globally act locally”), to acquire higher consciousness of the “big picture”, of the SDGs they contribute to achieve. Sustainable Development requires the action of each and everyone.

On a scale from 1 to 6, to what extent are you involved in the life of your Biosphere Reserve?

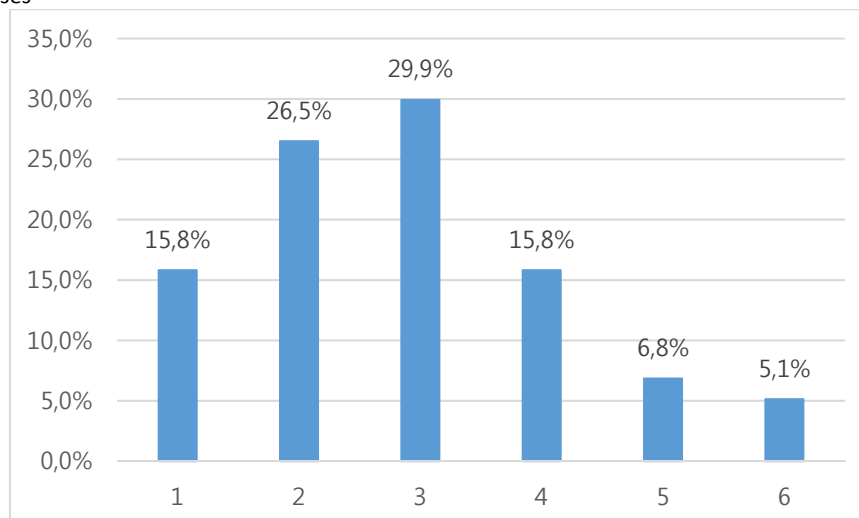
232 valid responses



Comment: Positive responses are clearly dominant. While all invited participants to the Forum were asked to be connected to a specific Biosphere Reserve, it is clear that the “intensity” of such connection could vary from case to case, from pure observation (of a researcher) to the full involvement in its life, governance, development of young living and earning their livelihood in a BR.

On a scale from 1 to 6, to what extent are you satisfied with the involvement of youth in the life of your Biosphere Reserve?

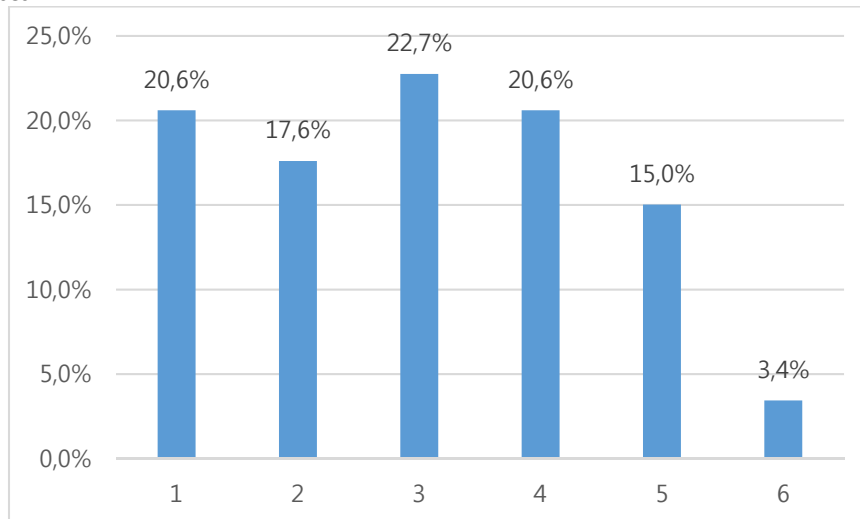
234 valid responses



Comment: A majority of participants are not satisfied with the youth involvement in their BR, supposedly in terms of both quantity and quality of it. Participants want more active and effective activities of the youth, and this view will be reflected in several further parts of this report.

On a scale from 1 to 6, to what extent do you feel the existence of the Biosphere Reserves contributes to gender equality?

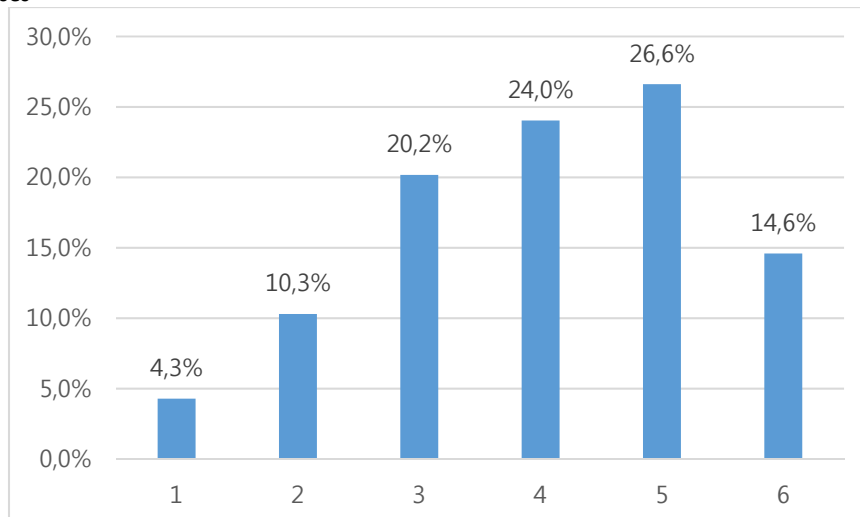
233 valid responses



Comment: The responses are very dispersed in this regard, even if negative opinions hold the majority. Since gender equality is at the heart of UNESCO's mission in the view of achieving the 2030 Agenda, this is for sure an issue which should be further investigated within the network, and for sure within the framework of follow-up actions to the MAB Youth Forum.

On a scale from 1 to 6, to what extent does the existence of your Biosphere Reserve facilitates your connection to the world?

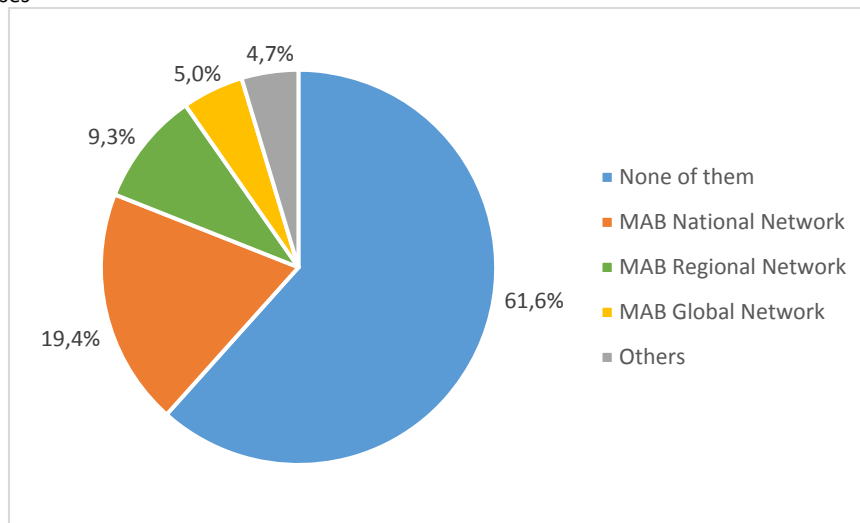
233 valid responses



Comment: 65.2% of the respondents show positive opinion on the networking/connecting function of their BR. Youth feel they can enlarge their connection with the world through BR, and this should be as clear expression of the programme's potential and the resources it offers. Such a function must be strengthened and continuously supported by UNESCO, in particular in favor of youth.

Indicate to which of these network have you ever participated to.

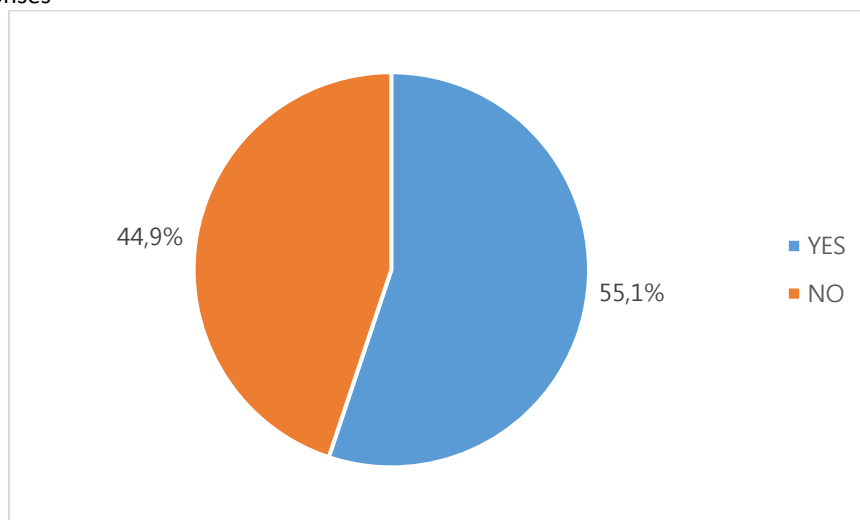
258 valid responses



Comment: A number of valid responses higher than 235 is related to the fact that multiple replies were possible. In connection with the responses to the previous question, it is really worthy of note that, while a majority of respondents expressed the belief that BRs facilitate their connection to the world, a large majority of them has never participated in any sort of MAB network. And when this occurred, it was mainly at the national level and, for very few of them, at the international level. For the MAB Youth Community, the proposed Forum is coming to fill an important gap.

Have you ever been involved in a livelihood project that is somehow connected to the Biosphere Reserve and the MAB programme?

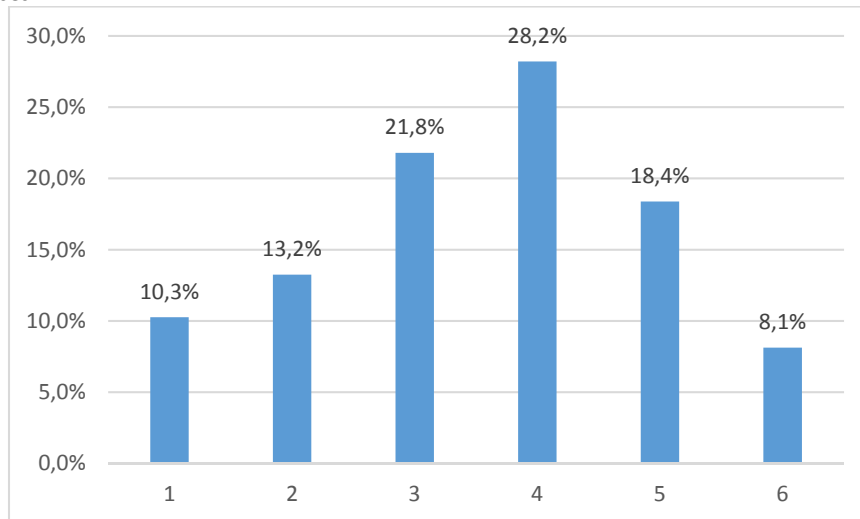
234 valid responses



Comment: Since the majority of respondents are researchers/students or representatives from the civil society, quite a number of them had no involvement so far in livelihood project connected to BRs. This should sound an alarm to the MAB Programme and its WNBR: without a clear possibility of earning their livelihood within and around Biosphere Reserves, an increasing number of youth will be forced to leave their territories and look for job opportunities elsewhere, leading to a loss of potential development for the network. This also could suggest that the networking and communication capacities of members of the network belonging to the group of actors earning their livelihood in BRs should be enhanced (overcoming language and communication barriers or limitations if compared to other categories of stakeholders in the network).

On a scale from 1 to 6, how would you evaluate the cooperation with your Biosphere Reserve for the development of your livelihood project?

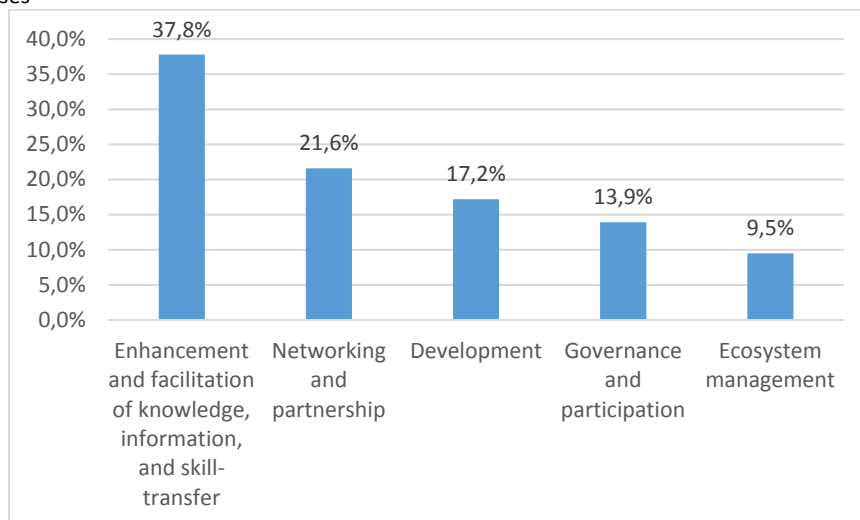
234 valid responses



Comment: Positive opinions hold slightly more than half of responses, while showing a quite wide distribution which could suggest further exploration of its meaning (as partly done with the following question).

What were the main advantages of working with the Biosphere Reserve?

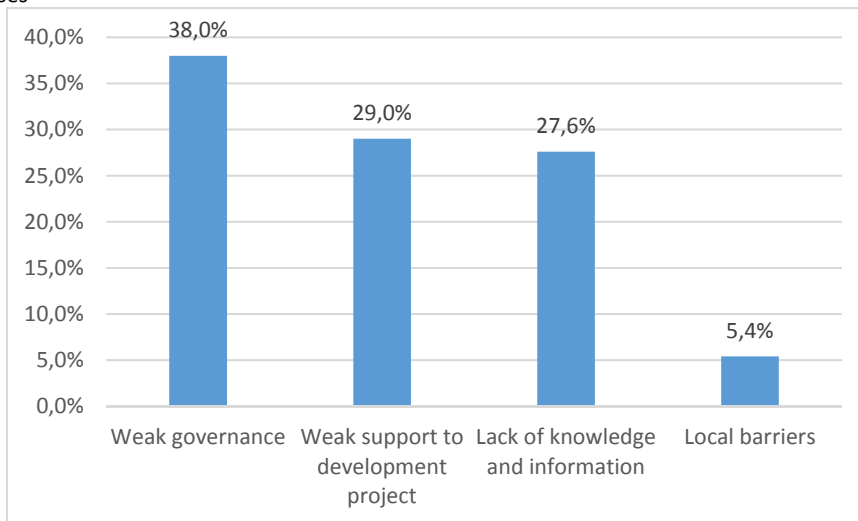
296 valid responses



Comment: A number of valid responses higher than 235 is related to the fact that multiple replies were possible. The biggest advantage of working with the BR for the respondents is the “enhancement and facilitation of knowledge, information, and skill-transfer” (37,8%). Respondents, almost the half of whom are researchers, think they can develop active studies and research as well as have better access to and exchange of knowledge and information through BR. They also recognize having received advantages in terms of opportunities to cooperate with various entities at all levels: local, national, regional, global. Lastly, 17,2% of participants evaluate working with the BR as a chance for territorial development in terms of economic, social, cultural, and environmental sustainability. While 13,9 % of them recognize BRs offer an opportunity to involve stakeholders.

What were the main obstacles of working with the Biosphere Reserve?

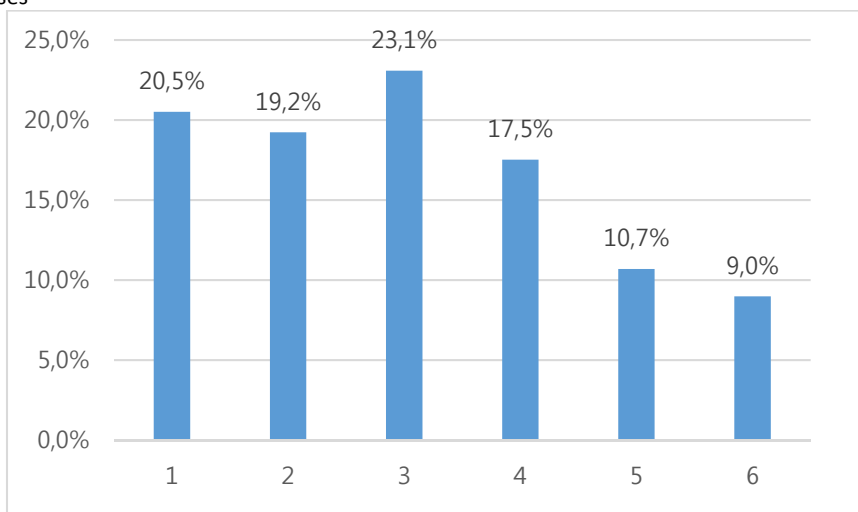
221 valid responses



Comment: The interesting point here is that the result for this question complies with the previous one on the advantage of working with the BR, and this increases the credibility of responses. The factors with which the respondents feel less satisfied appear to be the main obstacles of working with the BR: weak governance and weak support to development projects. Young people ask for more inclusive, systematic, and effective BR management mechanisms with improvement in existing bureaucracy as well as more resources and funding made available to implement sustainable development projects. In addition, they express the need to enhance the perception of BR and related values and activities, not only to the youth but also the general public, in order to facilitate their projects related to BRs.

On a scale from 1 to 6, to what extent are you engaged with the governance/decision-making in your respective Biosphere Reserve?

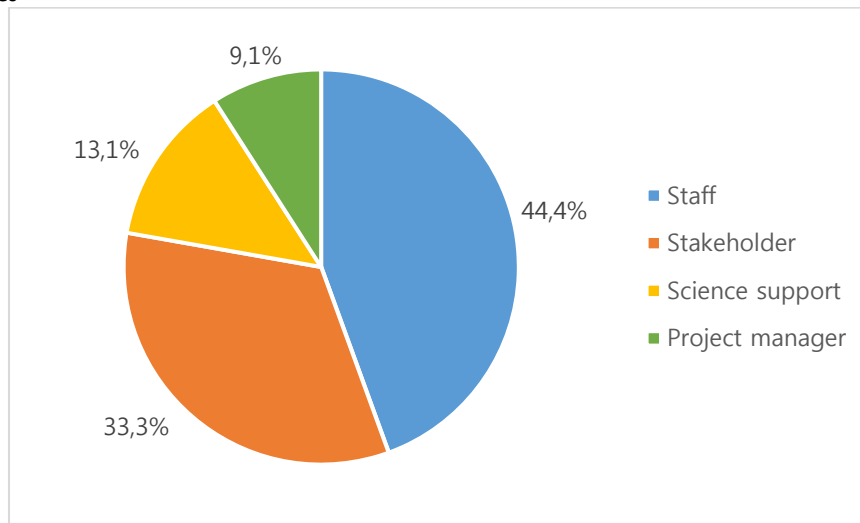
234 valid responses



Comment: The majority of respondents express a clear need for more engagement in the governance and decision-making in their respective BRs. Considering the high percentage of strong negative responses (scale 1 and 2), this issue will have to be tackled at various levels in the programme and the WNB, in order to guarantee in the future of more effective involvement of youth in the management mechanism of BRs.

In what capacity were you involved in the governance of your BR?

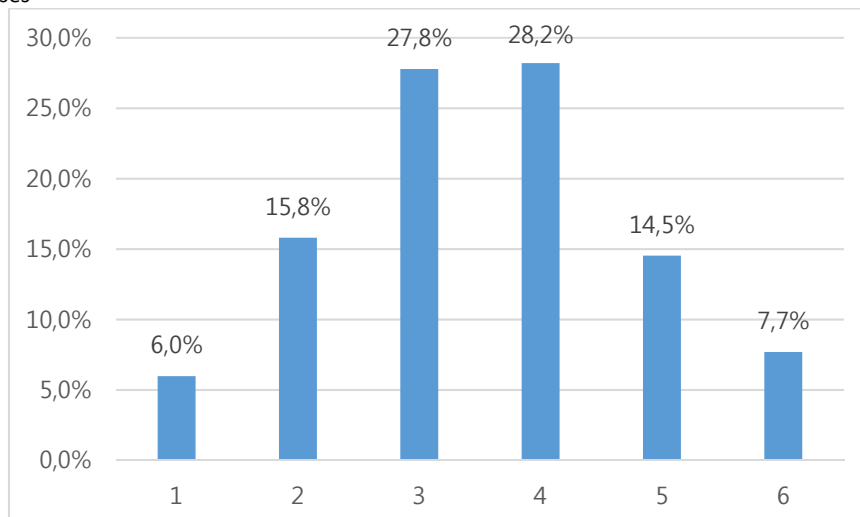
99 valid responses



Comment: The limited number of valid responses is consistent with the responses given to the previous questions (according to which not more than one third of the respondents confirmed they had a satisfactory engagement with the governance of their BR). A majority of respondents (44,4%) are involved as staff in the governance and operations of their respective BRs. It is interesting to note however that a good portion of them were also involved in quality of stakeholders consulted/involved in the governance and decision making of the BR, followed by those involved in research projects and studies (13 %) and those involved in various way in the implementation of development projects and activities.

On a scale from 1 to 6, how would you rate your civic involvement in your Biosphere Reserve?

234 valid responses

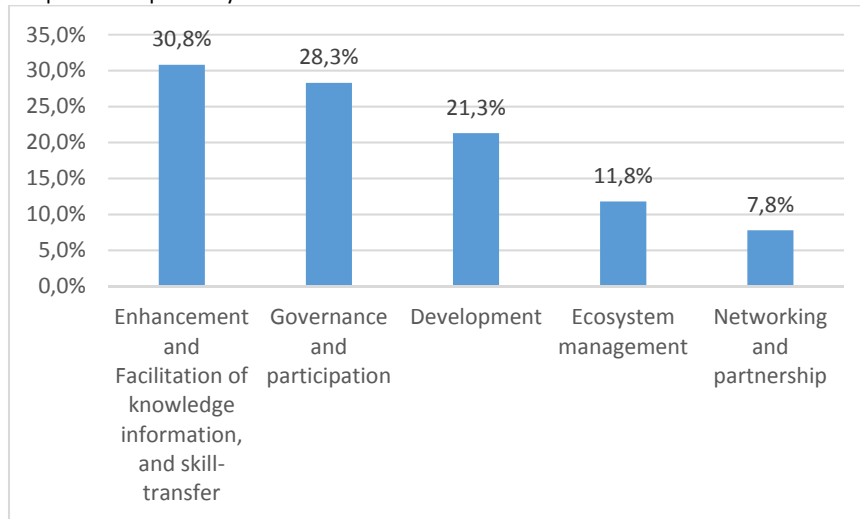


Comment: In comparison with the governance issue, the respondents evaluated their civic involvement more positively, and a good half of them (50,4 %) expressed positive answers. This can be interpreted in the sense that young people are keen to get involved in activities contributing to the life and to the promotion of the values of their BRs, more than in formal/official decision-making meetings/moments.

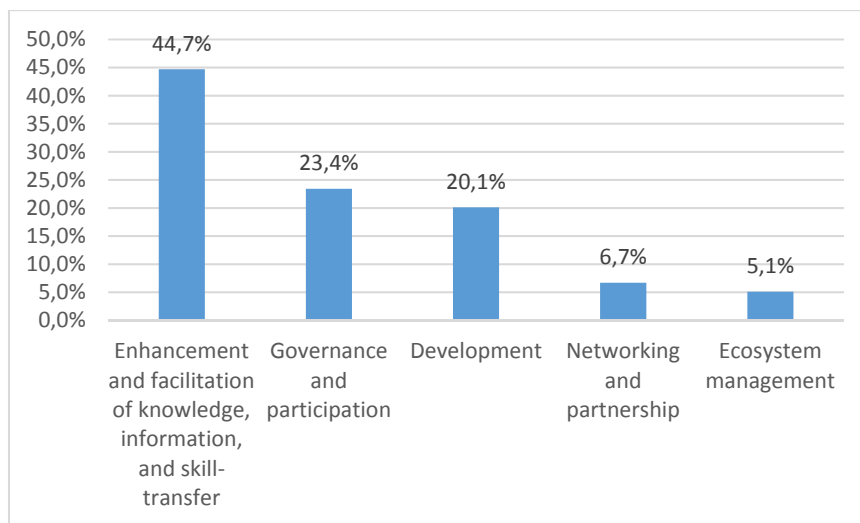
Section 3: Priorities in BR Development

Briefly outline the 5 key priorities for your BR future development and youth engagement³.

880 and 687 valid responses respectively



5 key priorities for your BR future development



5 key priorities for youth engagement

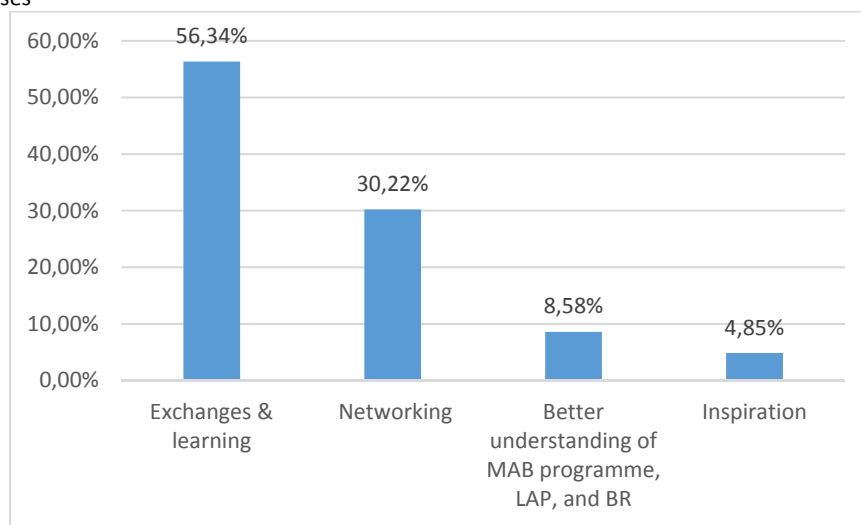
Comment: A number of valid responses higher than 235 is related to the fact that multiple replies were possible for both questions. As in their replies respondents expressed priorities for both the general future development of their BR and youth engagement in similar terms, we have used a similar codification of replies for both questions. Respondents expressed clear priorities in requesting the enhancement and facilitation of knowledge, information, and skill-transfer, as well as more effective and consistent governance and participation processes, while supporting more effectively sustainable development efforts. However, this apparent homogeneity can hide some important differences. While the support for active studies, research, and skill-transfer as well as the improvement of access

³ These were two separate questions, “Briefly outline your 5 key priorities for your BR future development” and “Briefly outline your 5 key priorities for youth engagement in the BR”. For the purpose of thorough analyses, however, the result of two questions are compared and analyzed here together.

to and interaction of the knowledge and information is considered equally important under both questions, “Education and research” holds the most responses (35,4% of all responses for the category) under the first question, while “raising awareness” shows the higher score (37,1%) for the second one. Also, regarding the “Governance and participation” category, the construction of more youth-inclusive and effective BR management mechanisms is more emphasized under the second question, receiving 58,4% of all responses for the category. Last but not least, to attract more young people to establish fundamental basis of youth engagement in BR, “sustainable job opportunities (34,8% of all responses for the category)” is regarded much more important in terms of development whereas the promotion and implementation of sustainable development project itself (55.6%) is more highlighted for the general development.

Briefly outline your expectations about the forum.

211 valid responses



Comment: Again the codification of open responses was not an easy task, and the above 4 categories have been proposed. It is interesting to note that a great majority of respondents expressed their expectations in terms of “Exchanges and learning” (from each other), followed by a will to use this opportunity for networking, which can be read also as a confirmation that a first ever gathering of MAB Youth was more than needed. Not surprising to observe that they also recognized the need to better understand the MAB programme and the Lima Action Plan as a framework for action (see replies to the first questions of section 2), but also more generally to make an inspirational experience.

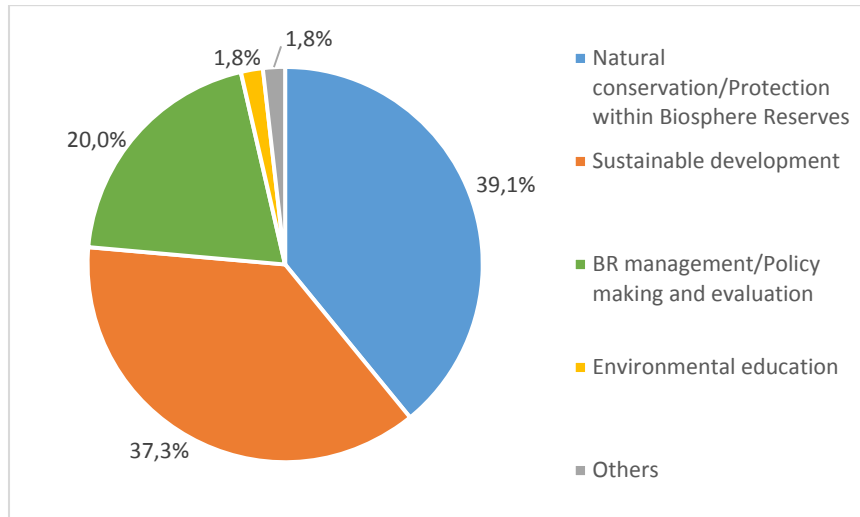
Thematic Areas

Following the first 3 sections of the survey which were mandatory to all respondents, more specific thematic areas were explored in a last section, based on the actual distribution of respondents according to their main affiliation as “researchers”, representatives of the “civil society” or workers/entrepreneurs earning their “livelihood” in Biosphere Reserves. Quite logically, the total number of valid responses to these thematic sections hardly could be higher than 100.

Thematic Area 1: Research

What kind of research/study are you involved in?

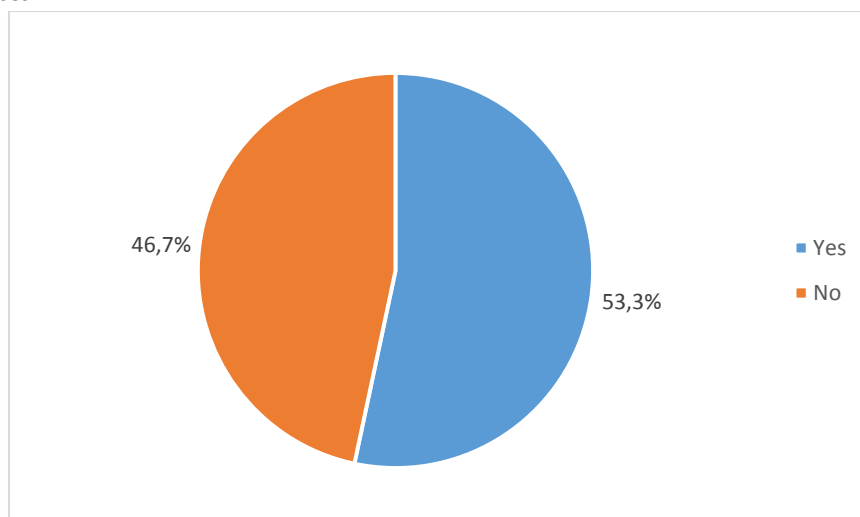
110 valid responses



Comment: 39,1% of respondents indicate nature conservation/protection within BR people as their main focus in research/study, while another third (37,3%) dedicate their attention to sustainable development. Interesting to note also a significant proportion of studies/researches dedicated to the management/governance itself of the Biosphere Reserves, as a demonstration of a growing interest in the quality of these crucial processes, while on the contrary very few energies are dedicated to Education.

Is the MAB Programme facilitating somehow your research?

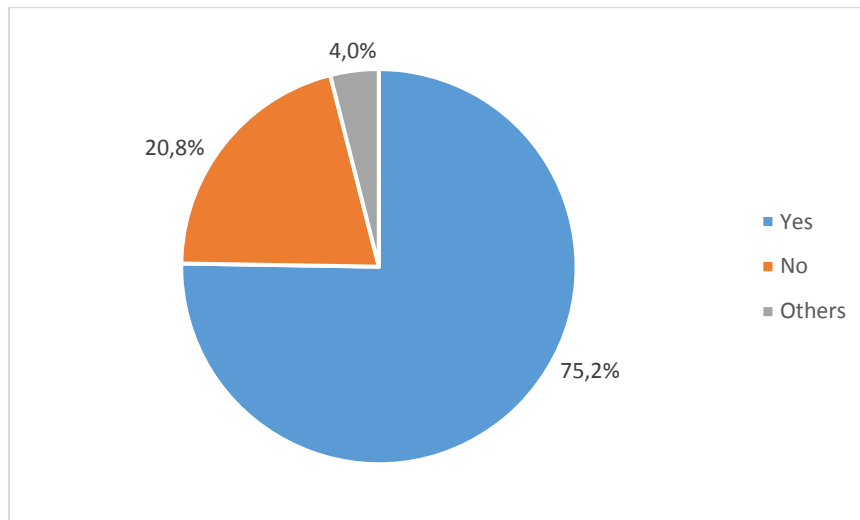
105 valid responses



Comment: A little more than half (53,3%) of the participants positively responded that the MAB programme facilitate their research, while 46,7% of the participants thought that the MAB programme plays no relevant role to facilitate their research (which rely mainly on universities/academies).

Is your Biosphere Reserve helping you orient your research?

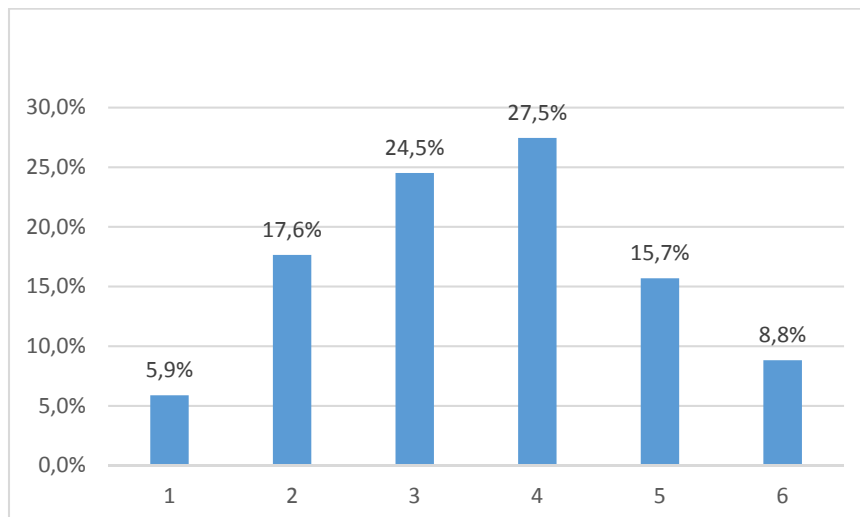
101 valid responses



Comment: Compared to the previous responses related to the MAB programme, it is interesting to note that a significant majority of participants -about three quarters- answered in the affirmative that their BR helps them orienting their research. The participants, who do not think BR navigate their research, account for only about a fifth (20,8%) of the responses. This can be seen as a confirmation of the fact that research and studies dedicated to Biosphere Reserves are deeply anchored to the reality of these territories.

On a scale from 1 to 6, to what extent do you think data produced by managing authorities of Biosphere Reserve is accessible to researcher?

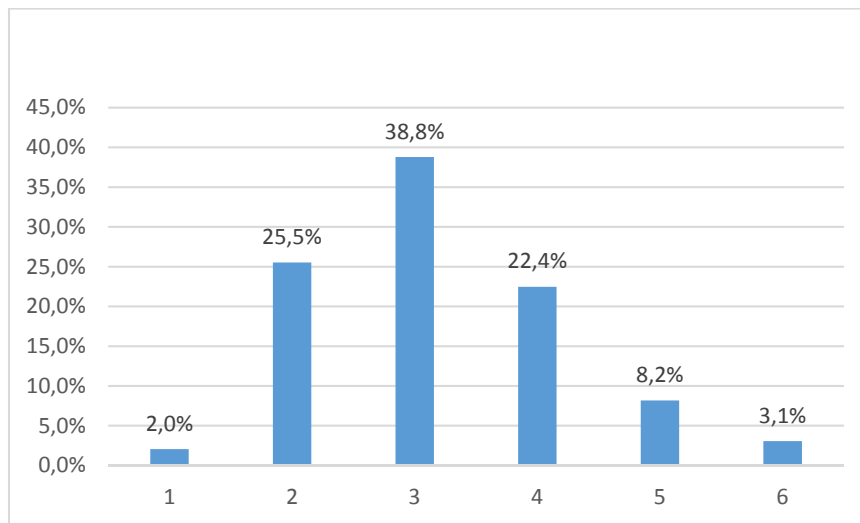
102 valid responses



Comment: The most frequent response is a scale 4 by 27,5%. Around half of respondents answered as a moderate (scale 3-4) extent and 24,5% (scale 5-6) of respondents think that researchers can easily access databases from BR. However, 23,1% of respondents still feel it is necessary to improve data accessibility (the logistic support function in more general terms) so that researchers are able to maximize resources for their studies.

On a scale from 1 to 6, to what extent do you think data sharing within the network of the MAB Programme is active?

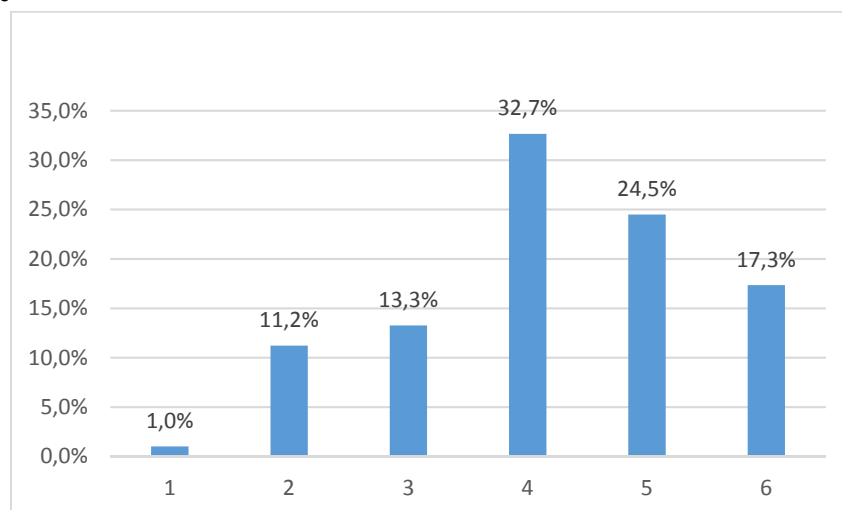
98 valid responses



Comment: Among the responses, a scale 3 ranked highest at 38,8%. From the graph, the overall distribution is thus slightly left skewed, which means respondents consider that data sharing within the network of the MAB programme is a bit inactive and that, at the same time, it could be improved.

On a scale from 1 to 6, to what extent do you think your research impacts your Biosphere Reserve?

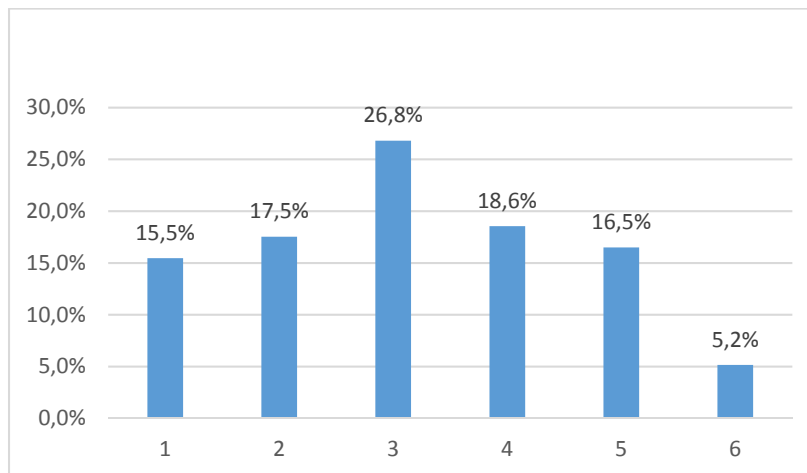
98 valid responses



Comment: This chart shows that the most frequent extent is a scale 4 (32,7%), followed by a scale 5 (24,5%). Most of the respondents - about 75% (Scales 4,5,6) - believe that their researches have an influence on their BR, and this could be seen as a demonstration that researches defined, developed and implemented in close relationships with the interested territories lead to useful deliverables.

On a scale from 1 to 6, to what extent is the WNBR helping you coordinating with other researchers?

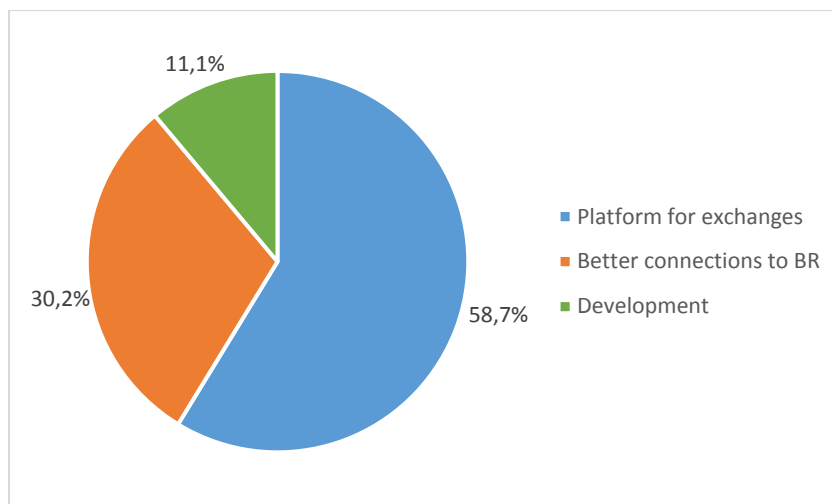
97 valid responses



Comment: The largest number of responses is on scale 3 (at 26,8%), which intimates a moderate-negative range on scale 1-2, and a moderate-positive range on scale 4-6, with similar spread. Interesting point of this chart is that the rate of negative opinion is quite high, even on scale 1, which includes high disagreement. About 60% of respondents seem to desire that the WNBR could play a more active role in assuring their connection to/coordination with other researchers.

What do you think your Biosphere Reserve and the WNBR could do to make your research more impactful and tied to the SDGs?

63 valid responses

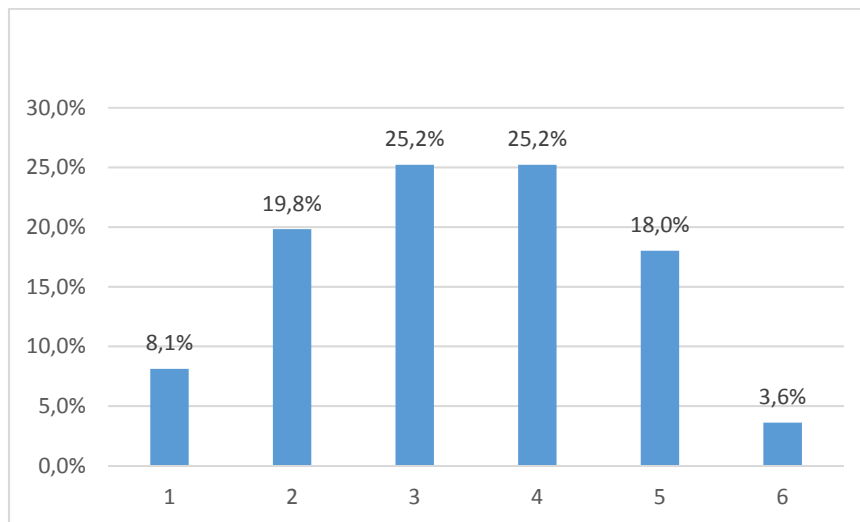


Comment: The largest portion (58,7%) of responses focuses on the availability of a reliable platform for exchanges, communication and sharing of data, in the support of active research, and to raise people's awareness. The second largest part of responses indicate the need for a better connection to BRs (30,2%), in line with previous responses showing that close partnering with BRs was seen as a key factor for well-tailored and impacting researches and studies (achieving SDGs, enhancing management processes and governance, etc.). Development holds 11,1% and intimates that funding, investment and infrastructure facilities are required to make their research more impactful and tied to the SDGs.

Thematic Area 2: Civil Society

On a scale from 1 to 6, how satisfied are you with your community involvement in Biosphere Reserve?

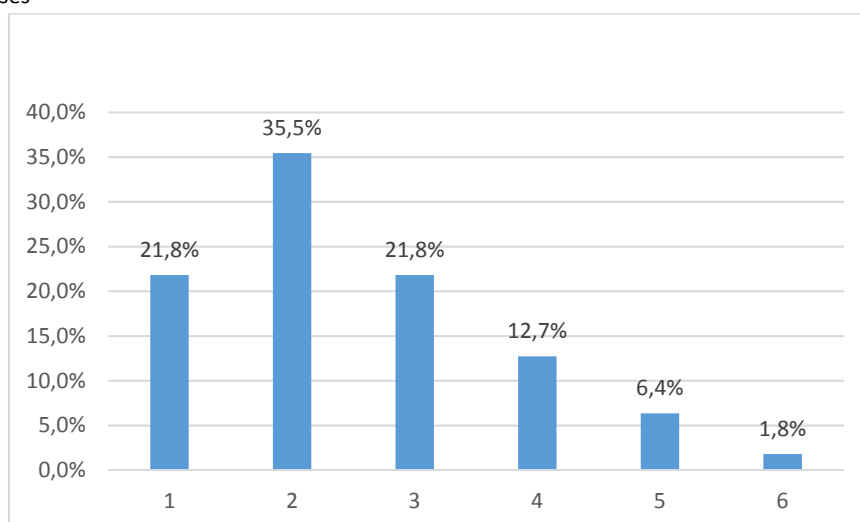
111 valid responses



Comment: The chart shows a quite symmetrical structure, with a slightly higher degree of non-satisfaction. Half of respondents offer their opinion in the moderate range, and only 3,6% of respondents reply that they are highly satisfied with the community involvement in their BR. This indicates there is definitely room for improvement in this regard.

On a scale from 1 to 6, to what extent do you think all the members of your community participate equally?

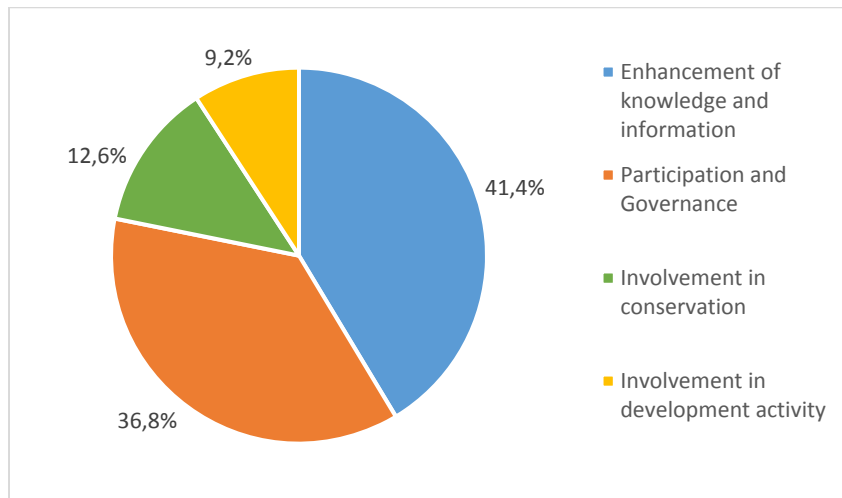
110 valid responses



Comment: The highest score is for scale 2 (35,5%). The overall distribution is left skewed and only 1,8% of respondents answered they fairly accomplished equal participation. This indicates that community participation needs to improve in order that all the members can take part in equally.

What is your experience with the civil society in your BRs?

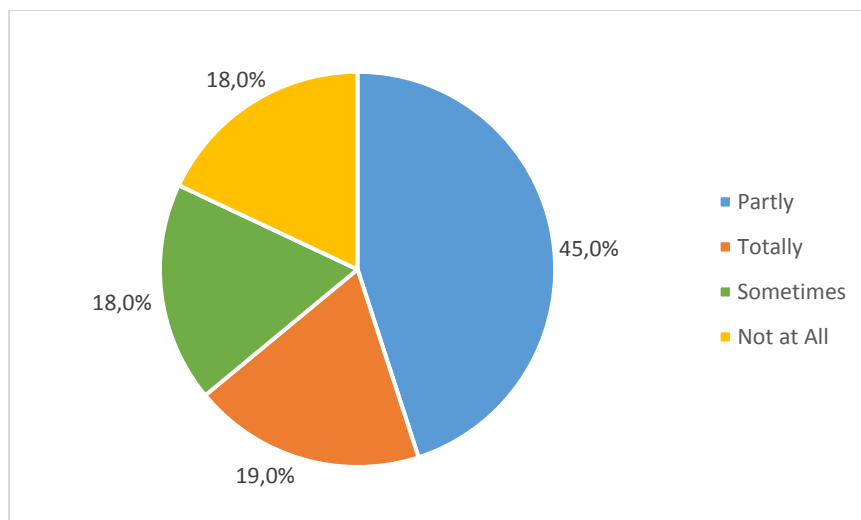
87 valid responses



Comment: Responses were categorized into 4 main groups as shown in the graph. The first two groups are definitely closely connected, in the sense that a high degree of participation in the governance (including decision-making) and management (including implementation of partnerships and mobilization of resources) of a BR is the most often connected to a high level of knowledge and facilitated circulation of information. The involvement of associations in conservation efforts continues to be a reality but not considered anymore as “the” priority in the context of many BRs, while their contribution to (sustainable) development was expected to be higher than what the graph shows.

Is your Biosphere Reserve managed through participatory processes?

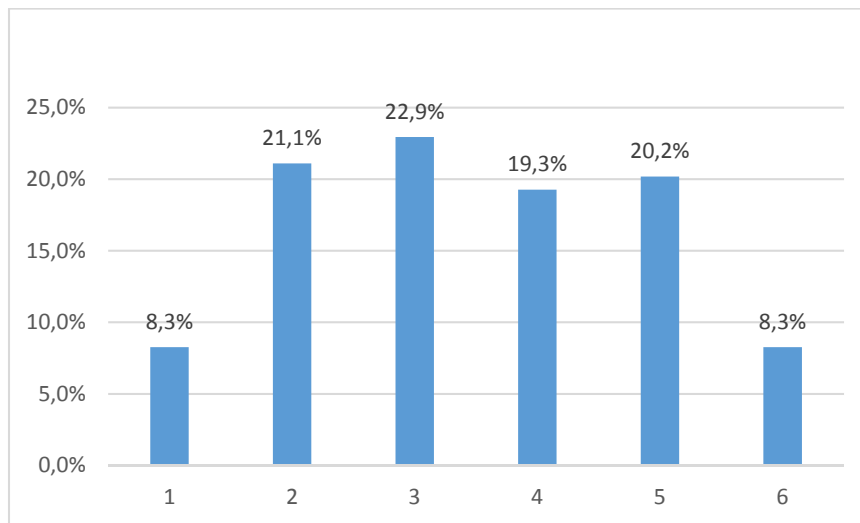
100 valid responses



Comment: A majority (45%) of respondents consider that their BRs are “partly” managed through participatory processes and only one fifth (19%) answered “totally” to the same question. While it appears that participatory processes are a reality in most of the BRs to which respondents belong, it seems that such processes could definitely be improved and multiplied in many cases.

On a scale from 1 to 6, what do you think is the impact of the Biosphere Reserve on social relations in the community?

109 valid responses

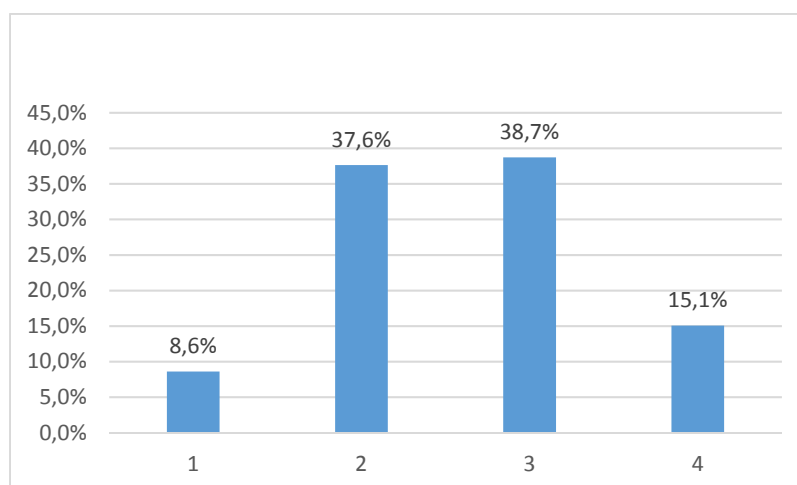


Comment: The responses were pretty dispersed and show similar ranges except for the 2 extremes. The graph indicates that there would be room for improvement in more than half of the cases, and this could happen through activities including awareness raising, facilitated participatory processes, involvement in concrete actions (from conservation to development), etc.

Thematic Area 3: Livelihood

On a scale from 1 to 4, to what extent do you think the WNBR and the MAB Programme are helping you fulfill your livelihood project?

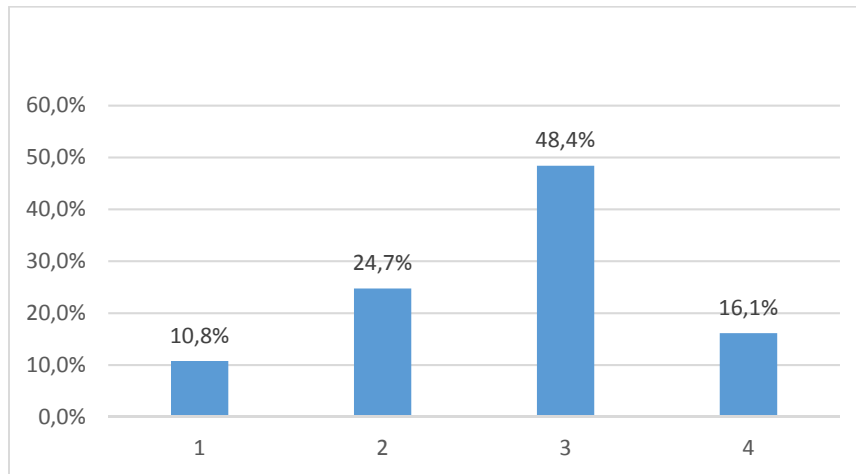
93 valid responses



Comment: As shown by this quite symmetrical graph, positive opinions slightly dominate negative ones, and this confirms what has been expressed already by the respondents within the second section of this report concerning the support received from their Biosphere Reserves.

On a scale from 1 to 4, to what extent do you think your BR is helping you fulfill that project?

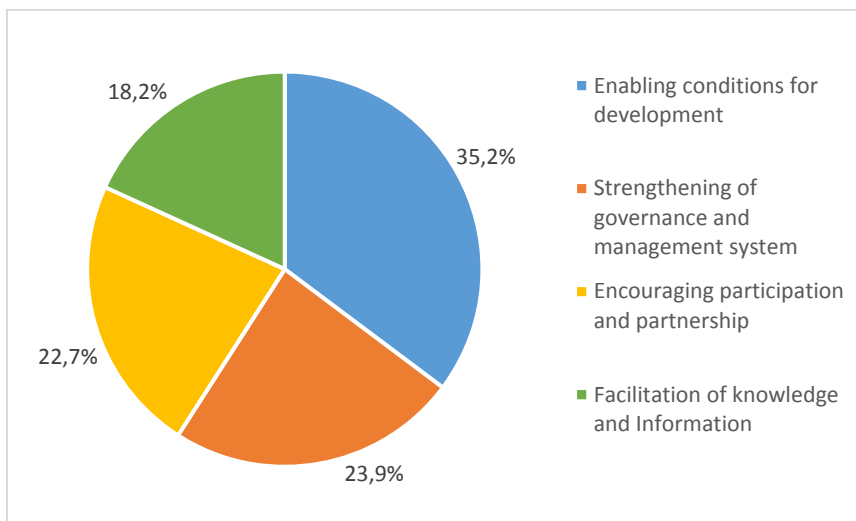
93 valid responses



Comment: As already expressed in Section 2, a majority of respondents are satisfied with the kind of help/support they receive in developing their projects, even if one third indicate room for significant improvement.

What are for you the key requirements for a livelihood project in your BR?

88 valid responses



Comment: While respondents were asked in Section 2 to comment on their experience with their BR, a similar question was now raised about their expectations/requirements concerning the kind of support they would like to receive from their BR. It is not surprising that quite similar elements are mentioned, even if in a completely different order of importance. Enabling conditions for development are mentioned on the first row, including not only a request for financial support to projects but also the generation of job opportunities and infrastructure facilities.

The strengthening of governance and management system is the second element in order of priority (23,9%), and this indicates that respondents consider proper “governance and management processes” as a key for project development, in the sense that the BR governing body should take care of

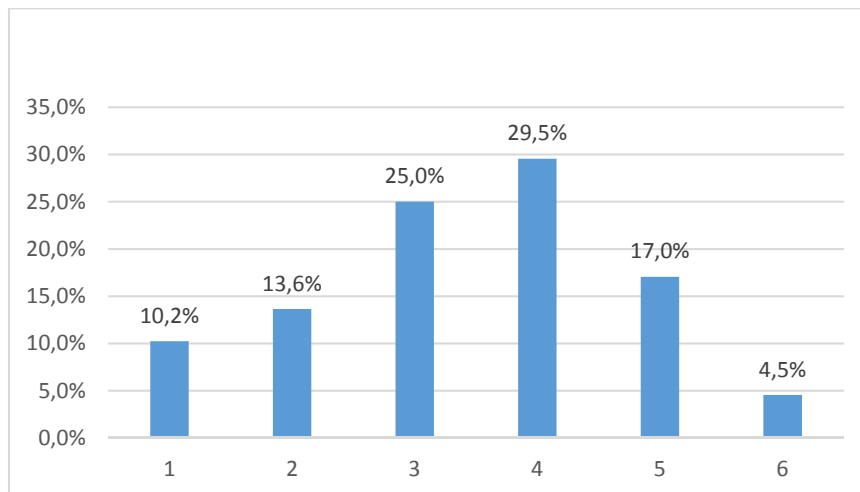
establishing principles, policies and plans, but also of determining an enabling legal context, as well as participation in decision making, which should facilitate the implementation of their project.

Elements such as “participation and partnership” were also mentioned in Section 2 with a similar percentage of responses (22,7% in the present Section, 21,6% in Section 2), and this confirms that respondents consider BRs can play an important role in establishing contacts with partners at various levels, but also to encourage the participation of local stakeholders and youth involvement in their projects.

The only big difference between the answers given in Section 2 and here concerns the “facilitation of knowledge and information transfer”, which includes also research, capacity-building and communication in general. This difference suggests that while respondents recognize BRs are active on this frontline, they consider this kind of “soft” support less important than more concrete enabling factors like infrastructures, investments, networking.

On a scale from 1 to 6, to what extent are you satisfied with the strategy for the development of your BR?

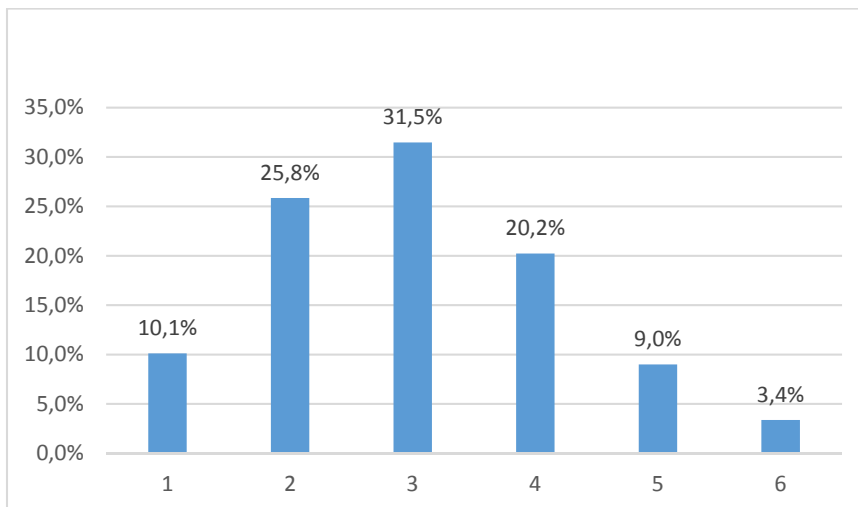
88 valid responses



Comment: 51% of respondents think they are generally satisfied with the development strategy of their Biosphere Reserve, even if the maximum score is indicated by only 4,5% of respondents. About half of the respondents are globally not satisfied (with 10,2% not satisfied at all). There is still much room for improvement in this area of action for BRs.

On a scale from 1 to 6, to what extent do you think training, management, and business benefits are equally spread among different groups of your BR?

89 valid responses



Comment: From this graph, the overall distribution is fairly left skewed. The highest point is on scale 3 at 31,5% and the second highest point is on scale 2 at 25,8%. Positive opinions hold less than the opposite views, but the interpretation of these answers is not simple. This graph suggests like in other cases that there is definitely much room for improvement in order to have benefits better spread among various beneficiary groups, including youth in particular.