

P-Tech: helping young minds to reach their full potential in digital era

Irina Efremova-Garth
Corporate Citizenship Manager IBM Russia/CIS countries



CHALLENGES



HS diploma no longer valuable



Jobs left unfilled; economy lags



Young adults unprepared for the future

EVIDENCE



2/3 of job openings require > HS diploma, AA adds 24% to lifetime earnings



By 2020, NY will need 350,000 middle skill workers

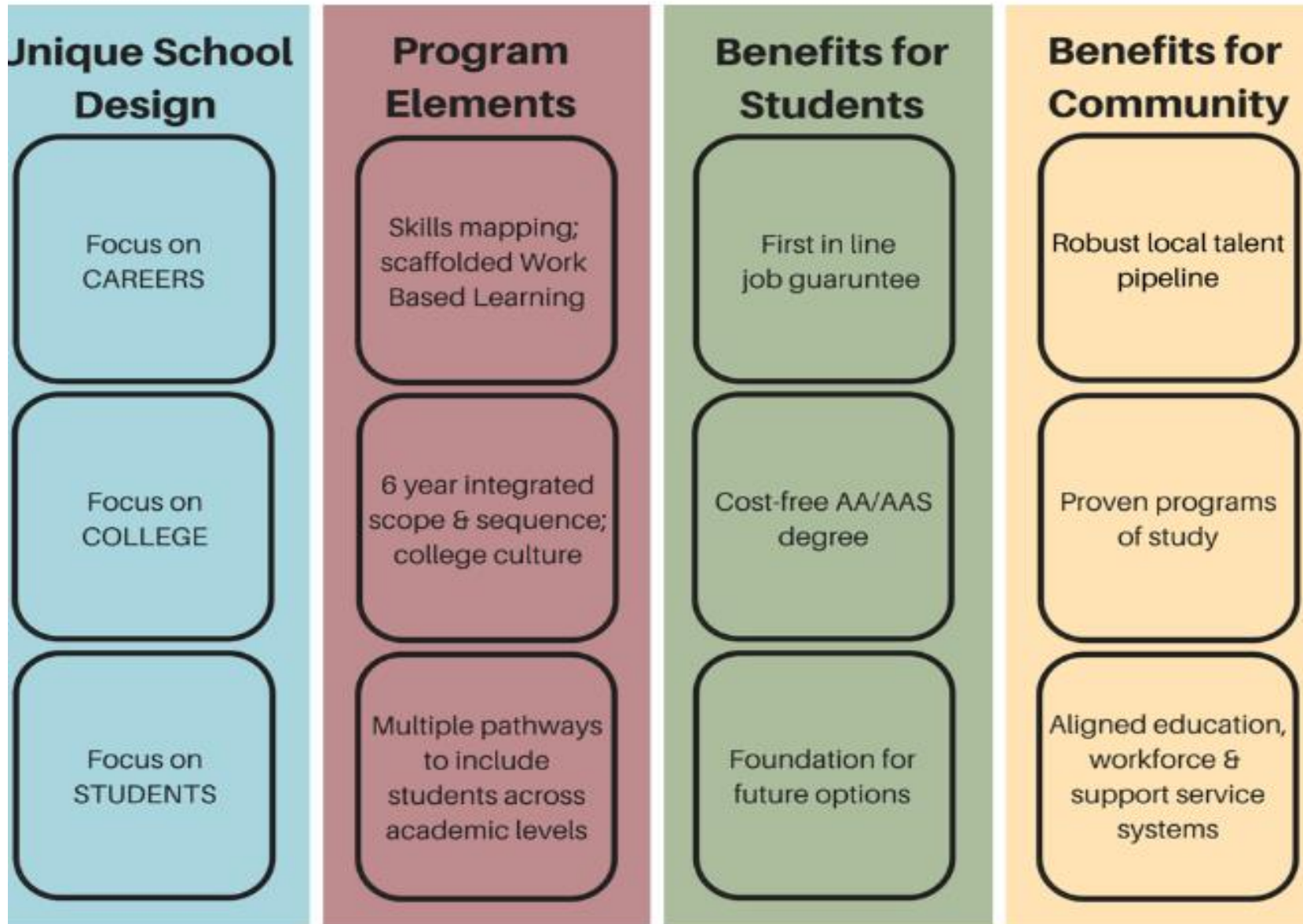


Only 35% graduate in 6 years; 50% require remedial courses in college

What is P-TECH?

- ❑ Public private partnership initiated in 2011 to respond the challenges
- ❑ Partners: IBM, NYC Department of Education, City of NY University and NEC College of Technology
- ❑ 2011 – one school, in 2018 – more than 100 schools
- ❑ Within six years, students graduate with
 1. no-cost associate degree in STEM disciplines
 2. skills and knowledge they need to continue their studies
 3. opportunity to step easily into high-growth, “new collar” jobs

P-TECH: Theory of action



Key components of P-TECH:

- ❑ Partnership between school district, higher education partner and industry. All are committed to the success of the school and its students
- ❑ Six-year program, designed as an integrated Scope and Sequence of high school and college courses, leading to an industry-recognized, postsecondary degree for all students.
- ❑ Workplace learning experience, including mentoring, worksite visits, speakers, project days, skills-based and paid internships, and “first-in-line” for jobs
- ❑ Open enrollment
- ❑ Cost-free postsecondary degree
- ❑ First-in-line for jobs with industry partners



Readiness checklist for business partners interested in replication

- ❑ Ability to mobilize company resources
- ❑ Ability to define skills for successful employees in the field
- ❑ Create and annually validate an up-to-date skills map for their company that identifies relevant and realistic job requirements
- ❑ Create workplace learning opportunities, including professional mentoring, site visits and credit-bearing and/or paid internships
- ❑ Be an active and equal partner on the school steering committee
- ❑ To be prepared to take the lead on the work-based learning curriculum sequence
- ❑ Strongly consider graduates for jobs or make students first in line for jobs

By 2018 P-TECH has been replicated by 400 business partners in the US and abroad

To learn more about P-TECH <http://www.ptech.org/>

P-TECH 9-14 Model | The Model | Key Elements | Schools | The Roadmap | News & Media | Tools & Sitemap | Search

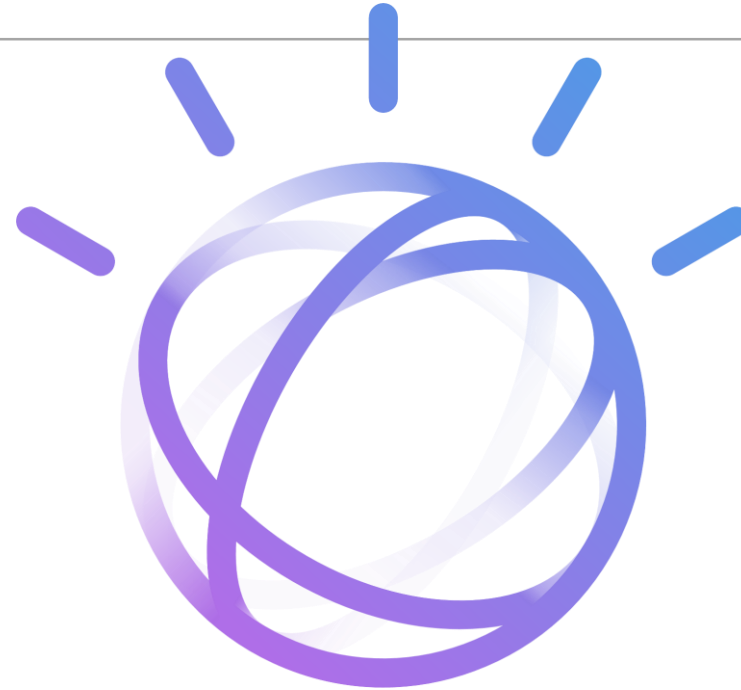
P-TECH is transforming lives.

"When people come together and say, 'students deserve a quality educational opportunity,' this is the result of that... This is what educational reform looks like."
— Karen Amaker,
Director of Norwalk Early College Academy (NECA)

"My experience has made me want to be an engineer more than ever. I'm not sure if I want to be that guy who goes around replacing equipment, but I do want to be that person who creates the equipment, maybe even invents new equipment."
— Spencer,
Student at P-TECH Brooklyn

P-TECH 9-14 Schools

- New London ECO: Science and Technology Magnet High School of Southeastern Connecticut**
490 Jefferson Ave
New London, CT, 06320, USA
- WNY P-TECH STEM College and Career Academy**
8685 Erie Road
Angola, NY, 14006, USA
- Michele Clark High School**
5101 West Harrison Street
Chicago, IL, 60644, USA
- Syracuse P-TECH@ITC**
258 E. Adams St
Syracuse, NY, 13202, USA



www.ibm.com/ru-ru/

Irina Efremova-Garth
Corporate Citizenship IBM Russia/CIS

Irina.Efremova-Garth@ru.ibm.com