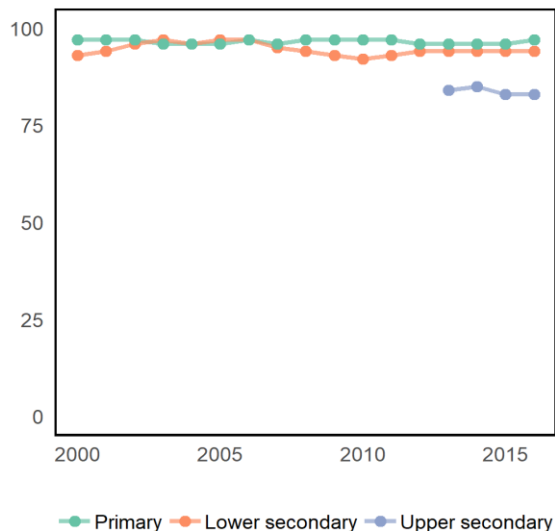


Europe and Northern America

Hungary

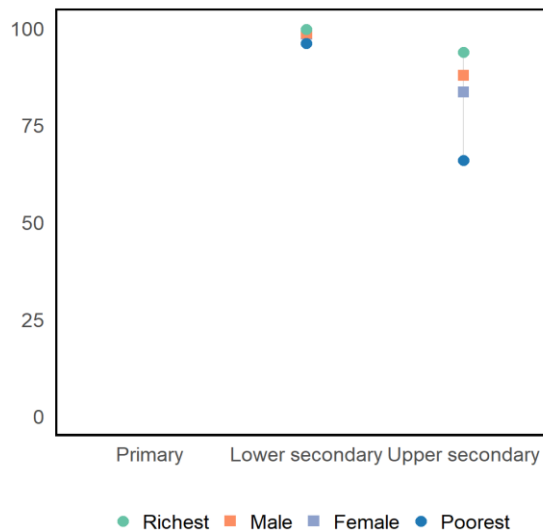
	Population (millions)	Students (millions)
Primary	0.4 ₊₁	0.4 ₋₁
Secondary	1 ₊₁	1 ₋₁

Adjusted net enrolment rate



Source: UIS database.

Completion rate, 2014



Source: UIS database and GEM Report team analysis.

INDICATORS BY SDG 4 TARGET (%)

	National	Regional	Global
Target 4.1 Basic education - Participation			
Out-of-school rate, primary	3 ₋₁	3 _i	9 _i
Overage rate, primary	1 ₋₁	2 _i	9 _i
Completion rate, primary	...	99 _i	85
Out-of-school rate, lower secondary	4 ₋₁	2 _i	16 _i
Overage rate, lower secondary	3 ₋₁	3	11 _i
Completion rate, lower secondary	99 ₋₃	98	73
Out-of-school rate, upper secondary	12 ₋₁	7 _i	36 _i
Completion rate, upper secondary	86 ₋₃	87	49
Transition rate into secondary	93 ₋₁	91 _i	76 _i

	Reading	Maths
Target 4.1 Basic education - Learning		
With minimum proficiency, early grades
With minimum proficiency, end primary	...	92 ₋₂
With minimum proficiency, end lower secondary	73 ₋₂	88 ₋₂
National assessment, early grades
National assessment, end primary	Yes	Yes
National assessment, end lower secondary	Yes	Yes

	National	Regional	Global
Target 4.2 Early childhood			
Pre-primary gross enrolment ratio	82 ₋₁	85 _i	50 _i
Participation rate, year before primary	91 ₋₁	95 _i	69 _i
Target 4.3 TVET and tertiary education			
Youth participation rate in TVET	13 ₋₁	10 _i	4 _i
Tertiary gross enrolment ratio	48 ₋₁	77 _i	38 _i
Target 4.4 Skills for work			
Adults who can copy and paste	51 ₋₁	53 _i	...
Adults with secondary education	76 ₋₁
Target 4.6 Adult literacy and numeracy			
Youth literacy rate	99 _{-3i}	100 _{-2i}	91 ₋₁
Adult literacy rate	99 _{-3i}	99 _{-1i}	86 ₋₁

	National	Regional	Global
Target 4.7 Sustainable development / global citizenship			
With minimum proficiency, science	74 ₋₂
Target 4.a Learning environments			
Primary schools with water	100 _{-1i}	100 _i	88 _i
Target 4.b Scholarships			
Outbound student mobility rate	4 ₋₁	6	6
Target 4.c Teachers			
Trained teachers, primary	92 _i
Trained teachers, secondary	87 _i
Finance			
Education expenditure (%GDP)	4.6 ₋₂	4.8	4.4
Education expenditure (%budget)	9.2 ₋₂	11.6	14.1

	National	Regional	Global
Target 4.5 Equity - gender, completion rate			
Female/male parity, primary	1.01 _i
Poor females (%), primary	76 _i
Female/male parity, lower secondary	1.00 ₋₃	1.00	1.00 _i
Poor females (%), lower secondary	95 ₋₃	98	72 _i
Female/male parity, upper secondary	0.95 ₋₃	1.04	1.03 _i
Poor females (%), upper secondary	65 ₋₃	81	33 _i

	National	Regional	Global
Target 4.5 Equity - location and wealth, completion rate			
Rural/urban parity, primary	0.88 _i
Poor/rich parity, primary	0.76 _i
Rural/urban parity, lower secondary	0.99 ₋₃	1.00	0.86 _i
Poor/rich parity, lower secondary	0.96 ₋₃	0.99	0.72 _i
Rural/urban parity, upper secondary	0.96 ₋₃	0.96	0.68 _i
Poor/rich parity, upper secondary	0.70 ₋₃	0.83	0.37 _i

Notes: (i) estimated value/UIS calculation; (-x): Difference between the observation from the reference year (2017). Indicator definitions are available at the UNESCO Institute for Statistics website and the 2019 Global Education Monitoring Report (Glossary and Introduction to the statistical tables). Data refer to 2017 or the most recently available year unless indicated otherwise.

Sources: UIS database for all indicators except those on targets 4.7 (TIMSS and PISA surveys of secondary students), and target 4.a (UNICEF). Regional aggregates are calculated by either UIS or the GEM Report Team (see above).

MIGRATION AND EDUCATION

	National	Regional	Global
High skill emigration rate, 1990	15,7	9,1	10,7
High skill emigration rate, 2010	11,5	7,6	10,1
Urban growth rate (2010-2015)	0,2	0,5	1,8

	National	Regional	Global
% of migrants (aged 0-19), 1990	2,1	3,6	2,0
% of migrants (aged 0-19), 2017	3,4	4,3	1,9
Refugees (per 1000), 2017	0,6	1,3	0,6

Notes: High skill emigration rate refers to the estimated annual emigration rate of the tertiary educated population (source: Deuster and Docquier, 2018); Urban growth rate is the average annual urban population growth rate between 2010 and 2015 (source: United Nations Population Division); Percentage of migrants refers to the share of migrants in the population aged 0-19 (source: United Nations Population Division); Refugees (per 1000) refers to the number of refugees for every 1000 members of the population (source: World Bank Development Indicators).