



Learning Cities become Green and Healthy

The Case of Okayama City



1

Okayama City

○ Beijing

○ Seoul

Osaka

○ Tokyo

Hiroshima

○ Shanghai



Okayama City

Population : about 720,000

Area : about 790km²

1

Okayama City



6th Comprehensive Plan (2016-2025)

8 働きがいも経済成長も

9 産業と技術革新の基盤をつくろう

11 住み続けられるまちづくりを

12 つくる責任 つかう責任

Vibrant Economy

4 質の高い教育をみんなに

17 パートナーシップで目標を達成しよう

Future-oriented Sustainable City

Dynamism Civic Collaboration Livability

Advanced Childrearing and Education

16 平和と公正をすべての人に

1 貧困をなくそう

2 飢餓をゼロに

5 ジェンダー平等を実現しよう

10 人や国の不平等をなくそう



Promotion of Health, Welfare and Environment

6 安全な水とトイレを世界中に

7 エネルギーをみんなにそしてクリーンに

3 すべての人に健康と福祉を

13 気候変動に具体的な対策を

14 海の豊かさを守ろう

15 陸の豊かさを守ろう

1

Okayama City as a 'Learning City'

2016 | Joined the Global Network of Learning Cities

2017 | UNESCO Learning City Award 2017



Presentation by Mayor Omori at Mayor's Forum at the 2nd ICLC in Mexico City



UNESCO-Japan Prize on ESD 2016

2

Characteristics of ESD Promotion



- 1 Multi-stakeholders' involvement and collaboration
- 2 Continuous support of the municipality
- 3 Community-based approaches to ESD

3 Kominkan (Community Learning Centers of Japan)

- **Legislation:**

Social Education Law (1949)

- **Management:**

Established by local governments

- **Numbers:** (as of 2015)

About 14,800 Kominkan in Japan

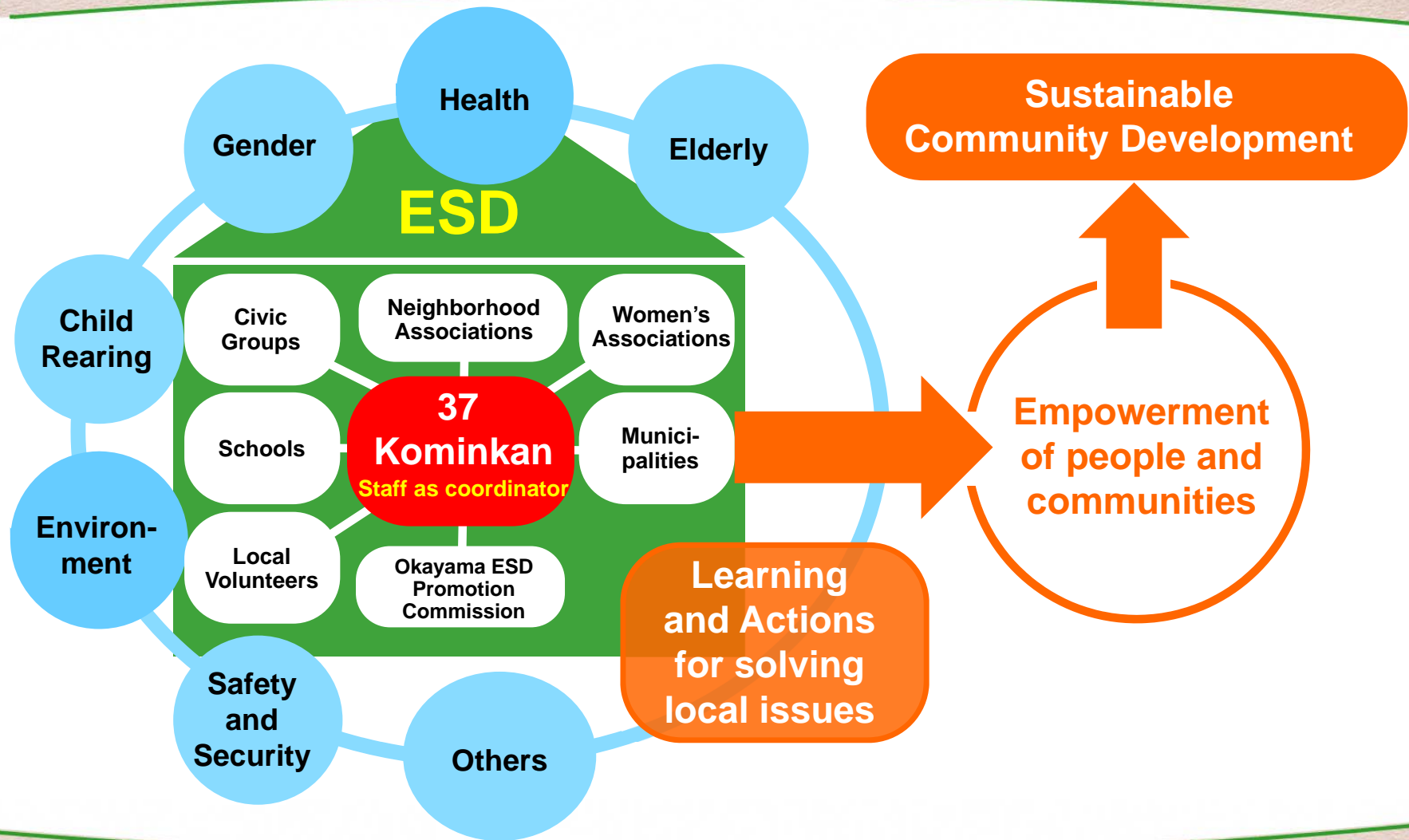
- **Purpose:**

Promote lifelong learning, and organize educational and cultural activities for community development



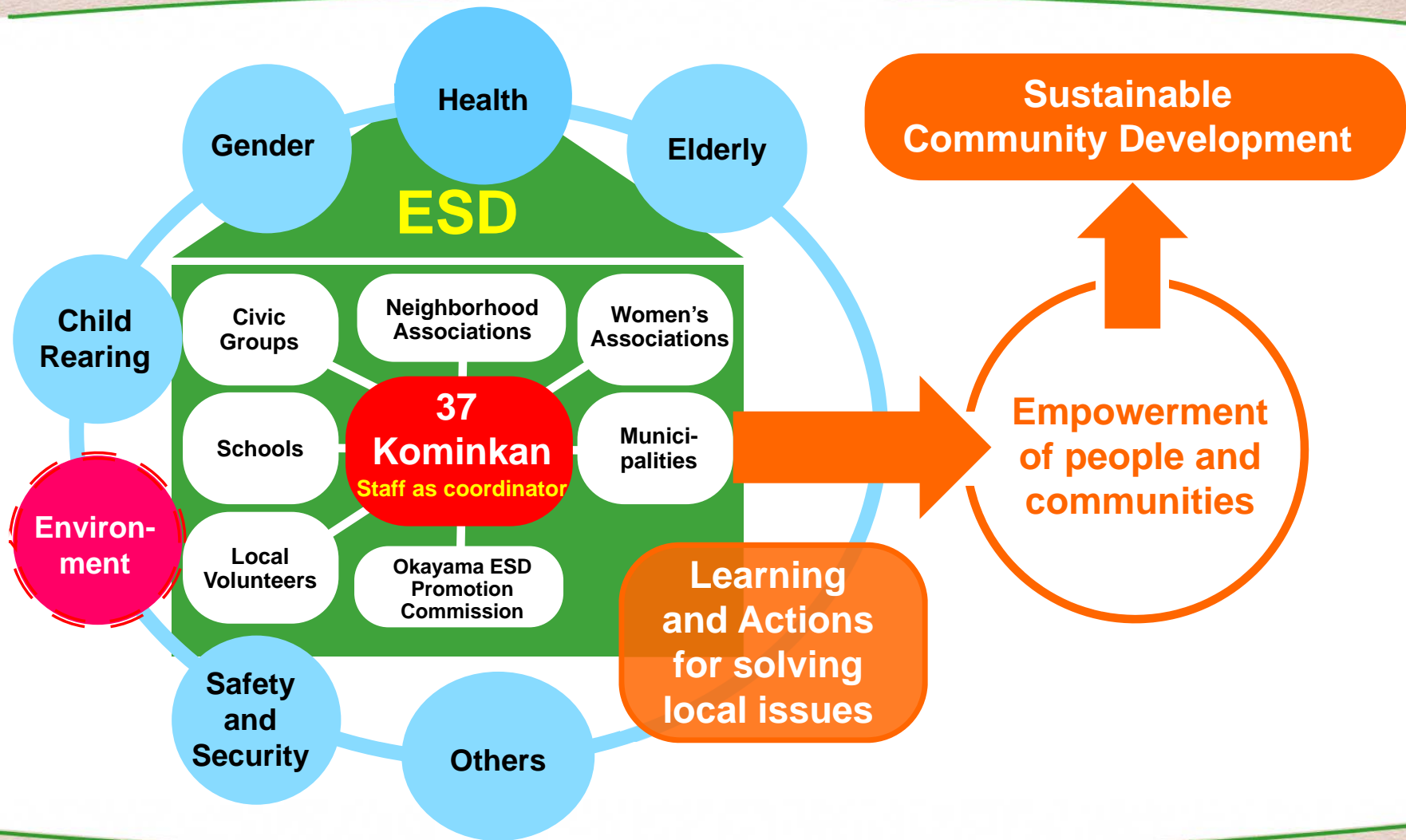
3

Community-based Approach to ESD at Kominkan



3

Community-based Approach to ESD at Kominkan



3- 1

Community-based Approach to ESD <Conservation of Biodiversity>



Ayumodoki
(Kissing Loach/*Leptobotia curta*)

3- 1

Community-based Approach to ESD <Conservation of Biodiversity>



Which is more important: agricultural efficiency or endangered fish?

**Dialogue among various stakeholders
at Kominkan**



**Learning and action by school children
toward conservation of Ayumodoki**



**Pass both Ayumodoki and agricultural
tradition to the next generation**

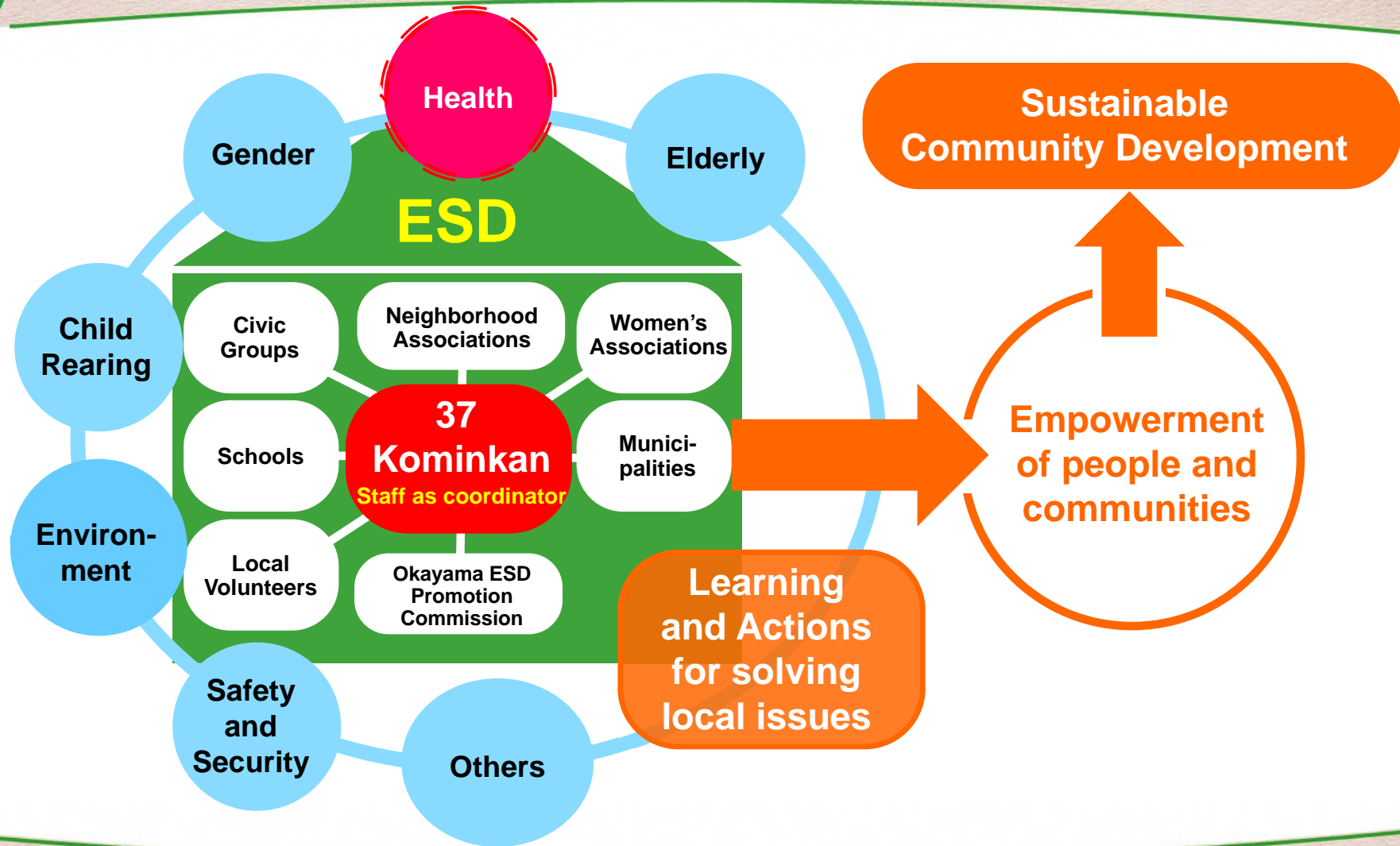
**Making common rules and
working together**



**Finding a way for
co-existence of the people and the fish**



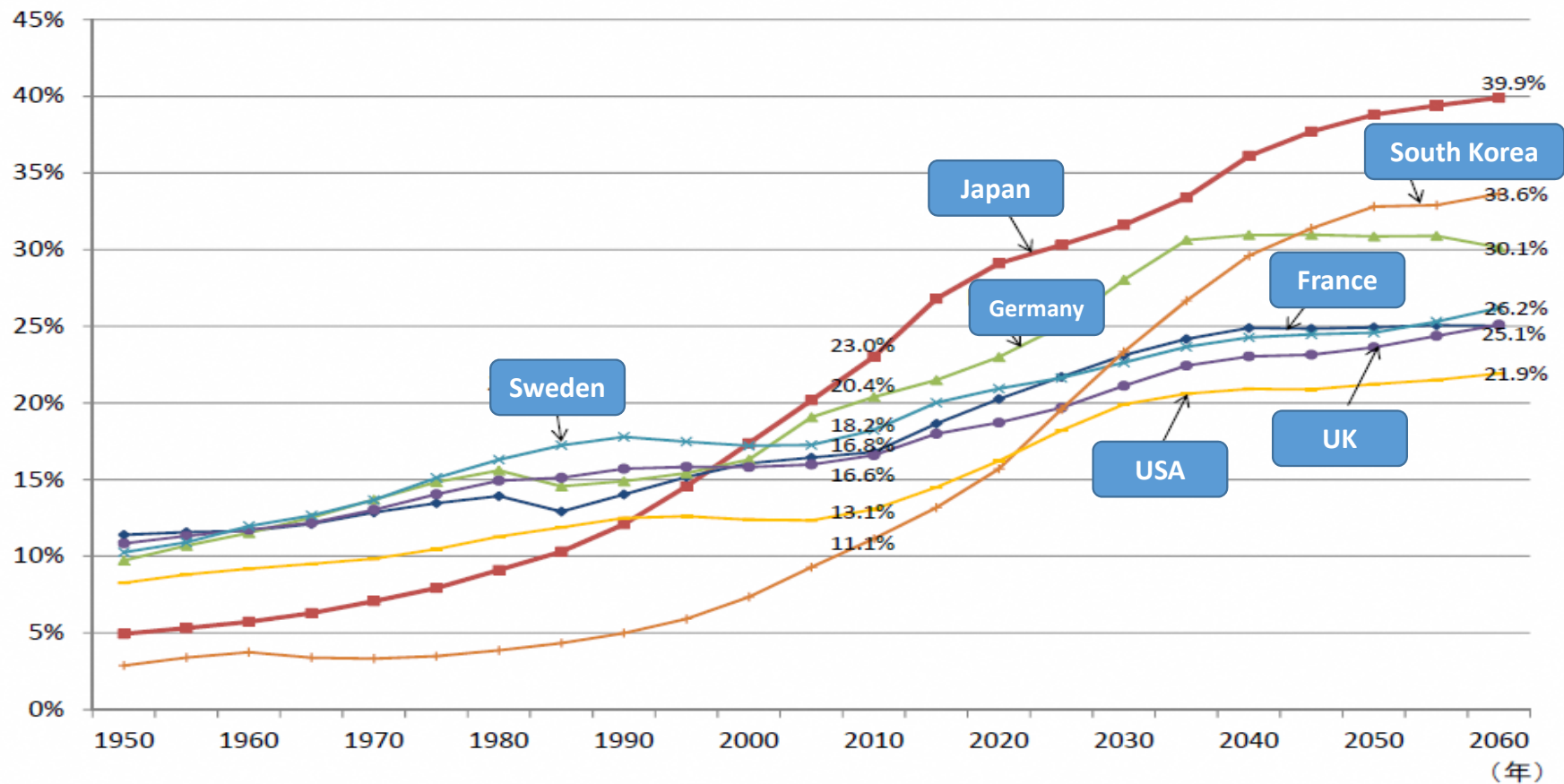
Community-based Approach to ESD at Kominkan



Community-based Approach to ESD <Health Promotion>



Percentage of people over 65



(出所) 日本は、総務省「国勢調査」、国立社会保障・人口問題研究所「日本の将来推計人口(平成24年1月推計):出生中位・死亡中位推計」(各年10月1日現在人口)
諸外国は、United Nations, World Population Prospects 2010

3- 2

Community-based Approach to ESD <Health>



Sport



Nourishment/ Dietary Life



Social Engagement



- ✓ Extend healthy life expectancy
- ✓ Promote active living

- Lifelong learning, especially ESD plays a crucial role in raising citizens' awareness and motivation to action.
- Community-based learning institutions, such as Kominkan, which facilitate dialogue and collaboration among various stakeholders, are essential for sustainable development in the local community.



Thank you for your attention.