

TRADITIONAL KNOWLEDGE IN DISASTER RISK MANAGEMENT

Dr. Rohit Jigyasu
UNESCO Chair Professor
Research Center for Disaster Mitigation of Urban Cultural Heritage, Ritsumeikan University, Kyoto
Senior Advisor, Indian Institute for Human Settlements

Fire in Wangduephodrang Dzong, Bhutan, 24 June, 2012



Ayutthaya, Thailand Floods, 2011



Christchurch Catholic Cathedral destroyed by Earthquake in 2010



Climate Change and impact on Cultural Heritage



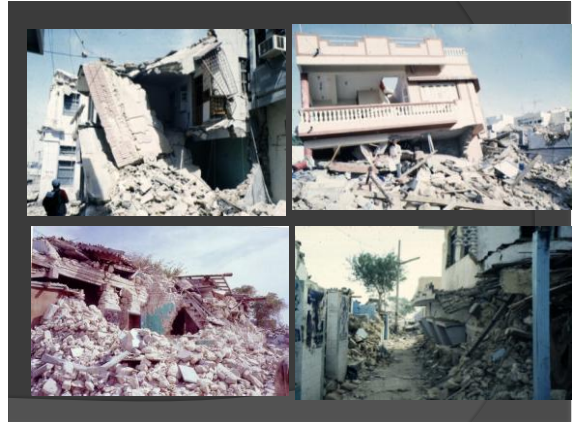
Cloudburst in Leh, India
6 August 2010

Cultural Heritage:
From merely a Victim
to an Asset for Disaster Risk Reduction

Case Studies

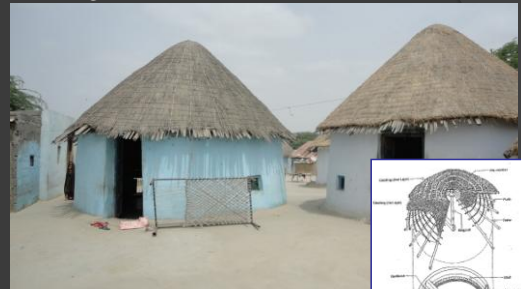
26TH JANUARY, 2001
GUJARAT EARTHQUAKE
 Mw 7.7 Richter Scale

- Killed 20,083 people
- Injured 166,836 people
- Affected 16.04 Million people



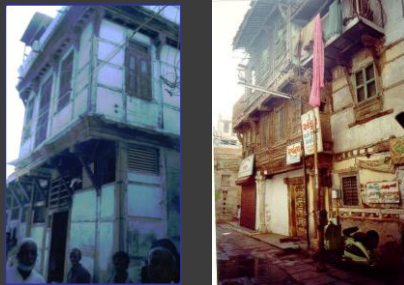
THE EARTHQUAKE SURVIVORS !

Bhungas



- Circular form good in resisting lateral forces
- Wattle and Daub constructions with bamboo as reinforcement.

Traditional Masonry Constructions

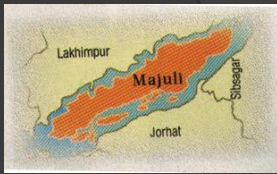


- Wood Frames with masonry infill



Northern Kashmir Earthquake 2005

Risks from Floods & Soil Erosion – Cultural Landscape of Majuli, Assam, India



Traditional methods of Protection compared to construction of embankments

Link with People's Livelihoods



Vernacular Architecture

Transformation Processes – Increasing Earthquake Vulnerability

Change in the Settlement Pattern

From wooden bridges to permanent Concrete bridges

Threats to Movable Heritage Assets

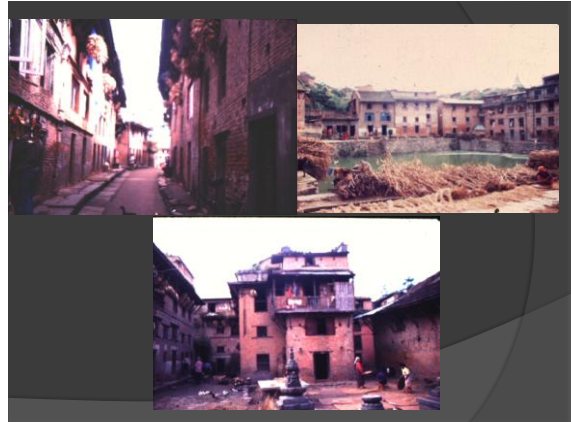
Fighting or Living with Risks?

Need for Adaptation of Traditional Coping Practices

Impact of Urbanization on Traditional Ecological Systems



BUNGAMATI VILLAGE, KATHMANDU VALLEY, NEPAL



Rituals and Traditionals Collective Community Participation and limiting growth and development through boundaries

Severe Impact on Land – the non-renewable resource



Unregulated Sprawl resulting in loss of landscapes and farmland - Issue of sustainability


Loss of Traditional Knowledge Systems is increasing vulnerability of communities to Disasters

- Loss of Local Skills / human resources
- Increased dependence due to lesser use of locally available resources
- Loss of assets for sustainable livelihoods such as land
- Economic Un-affordability for the marginalized
- Climatic Unsuitability – More energy intensive

Harnessing potential of cultural heritage for Emergency Preparedness and Response



Utilizing Traditional Water Systems for Emergency Supplies



Utilizing Traditional Open Spaces for Emergency Refuge

Historic City of Patan, Kathmandu Valley


Utilizing Traditional Management Systems For Emergency Preparedness & Response
social networks, religious institutions etc.




World Heritage of Shirakawa-Gu Villages

Cultural Considerations Post Disaster Recovery

Abandoned Relocated Villages following Earthquake in Gujarat, India



Lack of Cultural Considerations in the Design and Location of Villages



Traditional Village



Relocated Village

Loss of Traditional Systems...

Culture Sensitive Reconstruction



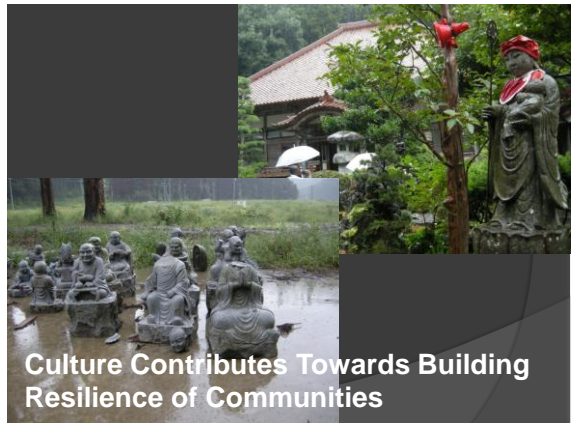


Building on people's ability to adapt and bring back cultural identity

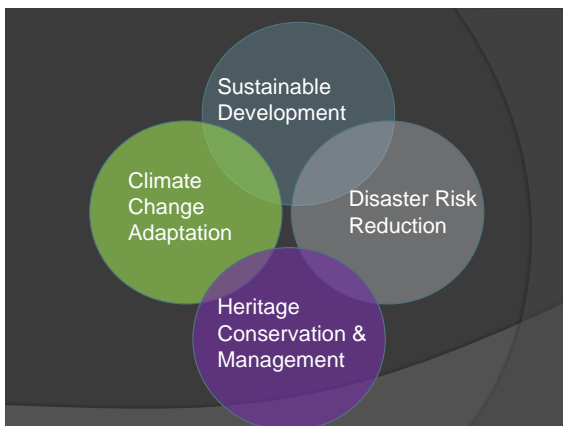
Eastern Japan Tohoku Earthquake and Tsunami
March 11, 2011



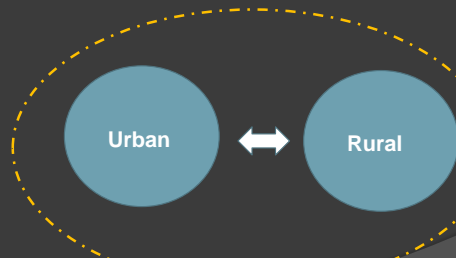
8 Months Later



Culture Contributes Towards Building Resilience of Communities



Need a Territorial Perspective for Heritage Protection



Looking for new approaches, tools and methodologies !
Learning from traditional knowledge systems

