

Bahir Dar University: Supporting Local Communities during COVID-19 in the Context of a Learning City

Abiy Menkir Gizaw

Bahir Dar University, Ethiopia

15th April, 2020



Ethiopia - Country Background

- **Name:** Federal Democratic Republic of Ethiopia
- **Location:** 3 – 15° N. Latitude and 33-48° E. Longitude (Horn of Africa)
- **Size:** 1,1 mil square kilometres (426,372.61 sq mi)
- **Regions:** 9 Regional States and 2 City Admins
- **Population:** 112.08 million (2019) - the most populous landlocked country in Africa.
- **Politics:** Founding member of LoN, UN; Hq of O/AU

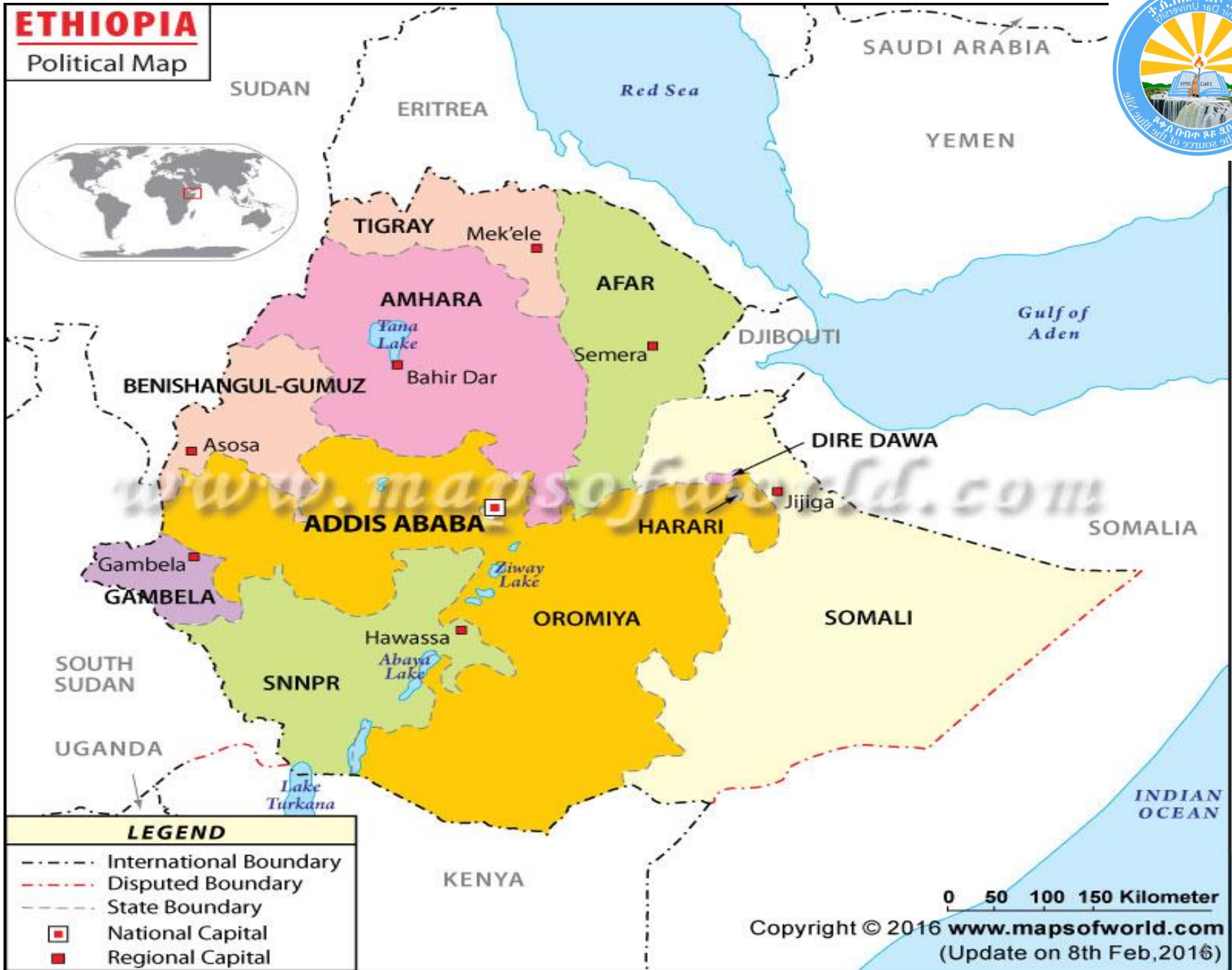
Ethiopia - Country Background



- **Languages:** 90
- **History:** Cradle of human being; Ancient Civilizations: Axum, Zagwe...; Not colonized/independent
- **Economy:** Dominantly agrarian, 85%; GDP = \$951 (2019 est.)
- **Religion:** Christianity (4th C.); Islam (7th C.)
- **Calendar:** Ethiopian year starts on Sept. 11/12. Every month has 30 days; the 13th month with 5/6 days. It is 2012 Now.

ETHIOPIA

Political Map



LEGEND

- International Boundary
- - - - - Disputed Boundary
- State Boundary
- ◻ National Capital
- ◼ Regional Capital

0 50 100 150 Kilometer

Copyright © 2016 www.mapsofworld.com
(Update on 8th Feb, 2016)



Bahir Dar - info

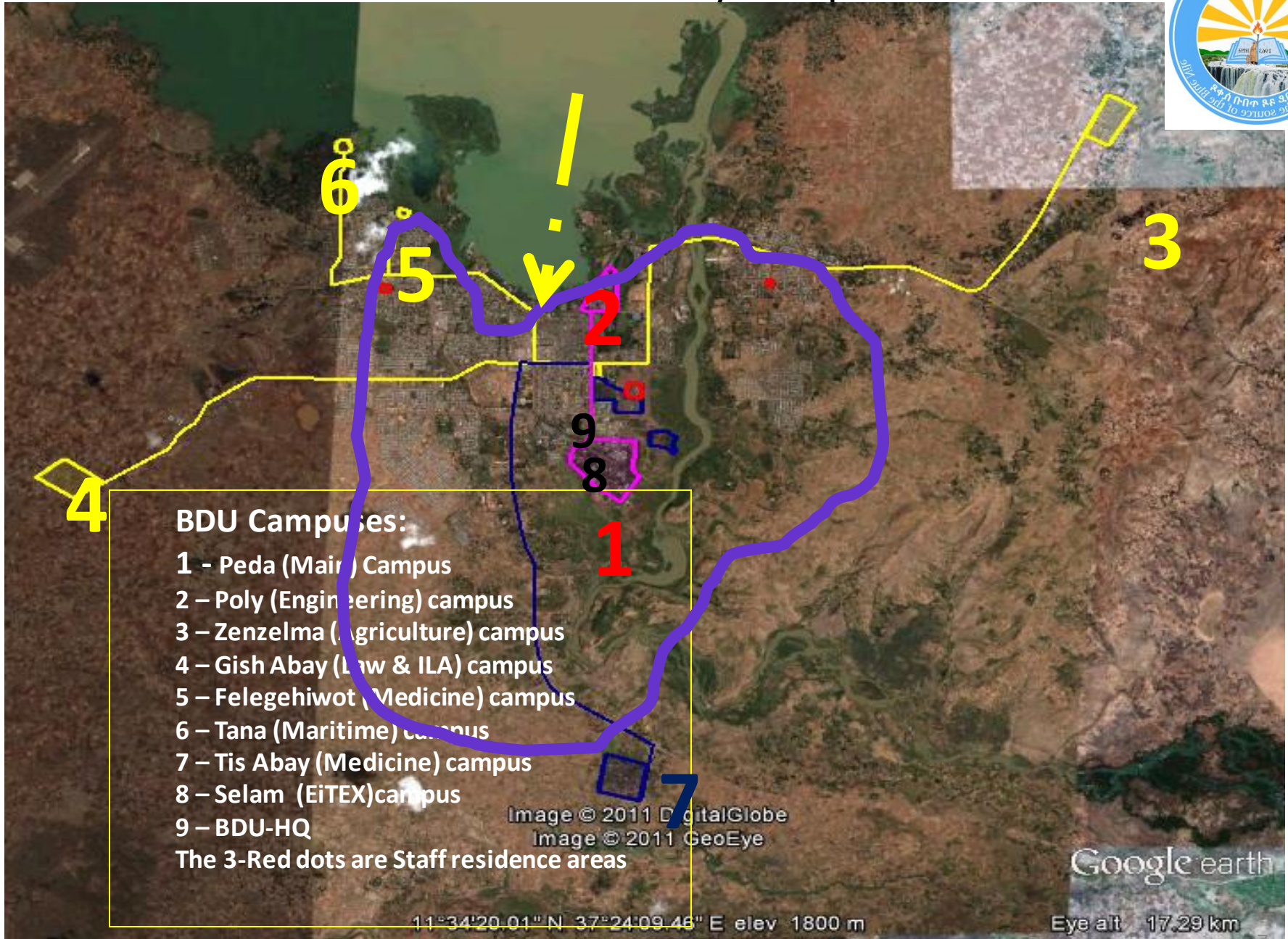
- ◆ Distance - 565 Km NW-Addis Ababa
- ◆ Area - 28 square km
- ◆ Population – 300,000
- ◆ Home to Lake Tana – 3156 km²
- ◆ Nile River (the longest in the world)
– 6650 km



Bahir Dar University

- ◆ Established 1963
- ◆ 8 campuses, 1 admin HQ; 8 staff accommodation sites
- ◆ 54,000+ Students; around 20k boarding
- ◆ 6,390+ Staff (academic and admin)

Bahir Dar University Campuses





COVID19

In Ethiopia:

- First confirmed case: March 13, 2020
- Total cases to date: 85
- Total deaths to date: 3
- Total recovered to date: 15

In Bahir Dar:

- Total confirmed case: 1



How is your university supporting the provision of learning opportunities for local communities during COVID-19?

- All classes have been halted
- Students have been provided with reading materials related to their courses
- Students and members of the community have been given information about COVID19 via leaflets
- BDU experts have been providing training for regional health professionals



How is your university engaged in the public discourse on COVID-19?

- BDU experts have been providing explanations on:
 - the nature of the virus,
 - prevention mechanisms,
 - countering rumors and false information ... on public media/TV, Radio, Social Media



Is your university supporting students' social engagement during COVID-19, and how?

- BDU is mobilizing volunteer students (health and textile engineering students).



Mental support in neighborhoods and families?

- Counseling service and other related supports are being given for 2300+ street dwellers



Coordination

- BDU is part of the regional command post and technical working group on COVID19



BDU's Contributions

- Production of face masks. (EiTEX, teaching factory); more than 21k+ produced and distributed so far.
- Production of personal protective cloth for medical personnel; 45 produced so far.
- Production of hand sanitizers and distributed for those who cannot afford to buy it.
- Mobilized resources and acquired 10 Forehead Infrared Thermometers; distributed to local hospitals and the regional health bureau











BDU's Contributions

- Two of the seven BDU campuses (with capacity of 7400 beds) have temporarily being assigned and used as quarantine centres
- The University has assigned half of its health professionals to work in the hospital chosen to treat Covid19 cases. The rest are and will be serving in BDU's Tibebe-Ghion Hospital



BDU's Contributions

- BDU's Health Professionals have been providing Covid19-related training for health professionals under the regional Health Bureau.
- They have also been engaged in creating awareness for the community via loud speakers and leaflets.
- The university has provided food, sanitary materials and other supports for retired staff



BDU's Contributions

- The City Administration has temporarily settled 2300+ street-dwellers in schools. BDU has been providing food for these citizens for the past 2 weeks.
- The university has donated 70 quintals of beans, 15 quintals of onion, 40 quintals of wheat flour, 20 quintals of wheat, 160 litres of bleach to the community
- BDU has assigned 2 buses for the city's oldest hospital; 7 pick-up vehicles to be used during this Covid19 crisis by the City and Regional Administrations.



BDU's Contributions

- BDU has also provided 5 buses to transport religious education students in different institutions in Bahir Dar, who were stuck due to lack of transportation services
- BDU has also transported its regular students (nearly 20k) to their homes with 15 buses of its own and 47 rented ones, free of charge.
- BDU staff have contributed more than 150k Ethiopian Birr to the city's initiative established to fight against Covid19













