



GAML Webinar

SDG 4.1.1 Measurement Tools

- Applications in the Wake of COVID-19

Dr. Modupe Adefeso-Olateju
PAL Network/TEP Centre Nigeria

10 June, 2020



PAL NETWORK
People's Action for Learning

Overview of ICAN

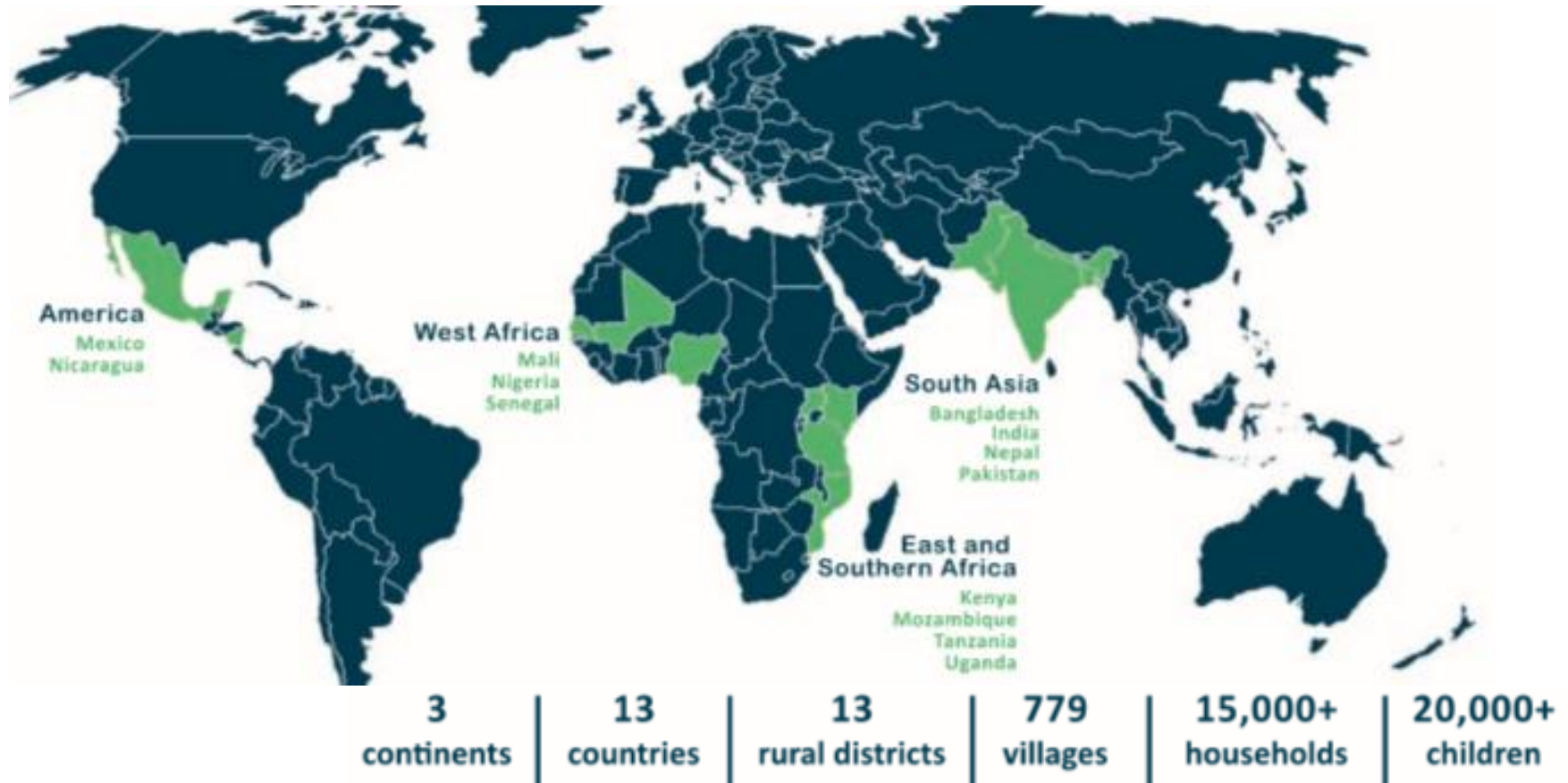


- **ICAN** stands for International Common Assessment of Numeracy
- Open-source, easy to use, developed and implemented through a south-south collaboration
- Definition of numeracy based on the minimum proficiency level for grades 2/3 (SDG 4.1.1 (a))
- Most tasks are aligned to grade 3-level or lower of the UNESCO Global Proficiency Framework
- Feasible for use in household-based assessments to include out of school children as well as in school settings

ICAN reach



- Large-scale proof of concept implemented.
- All data collection procedures aligned to global best practices via PAL Network's Data Quality Standards Framework



Perspectives on the Policy Linking Method

- National/regional assessments can be designed to align with the Global Proficiency Framework (GPF) to report against SDG 4
- Method is useful for assessments that already capture the relevant knowledge and skills described in the GPF
- The content alignment of the assessments should be determined before the actual workshop.

Perspectives on the Policy Linking Method

- The Angoff method for benchmarking is based on non-statistical judgements
- In cases of severe capacity deficits, teachers may be biased in estimating the probability of children answering assessment items correctly
- To control this bias, there should be a fair mix of public and private school teachers participating in policy linking workshops

Government/Stakeholder Buy-in for the ICAN Benchmarks

- Policy linking represents an uncomplicated, inclusive and potentially beneficial method for governments as they design and deploy national assessments
- Securing buy-in also means that the ICAN results in Nigeria can be benchmarked against results from 13 other countries – and potentially more.

Future Policy Linking Workshops for PAL Network Assessments

- Existing PAL Network assessments should be aligned with the GPF
- Future PAL Network assessments can be designed to factor in the domains, constructs, knowledge and skills described in the GPF



PAL NETWORK

People's Action for Learning



...Global standards for education partnerships