



26TH (ORDINARY) SESSION OF THE INTERNATIONAL BIOETHICS COMMITTEE (IBC)

11TH (ORDINARY) SESSION OF THE WORLD COMMISSION ON THE ETHICS OF SCIENTIFIC KNOWLEDGE AND TECHNOLOGY (COMEST)

5-6 JULY 2019

General Information

➤ The public plenary meetings of the **26th (Ordinary) Session of the IBC** and the **11th (Ordinary) Session of COMEST** will be held in conjunction with the Conference on Science and Technology and Sustainable Development from **5 to 6 July 2019**.

1. BEFORE YOUR DEPARTURE

1.1. Before Arrival

➤ Participants are requested to apply for Thai visa prior to your departure. The list of countries with visa exemption and requirements are specified in the information note for participants. For further information, please visit <http://www.mfa.go.th/main/en/services/4908>.

1.2. Health and Vaccination

➤ The government of Thailand requires proof of yellow fever vaccination for applicants who have travelled from or through countries which have been declared Yellow Fever Infected Areas. Upon arrival at the port of entry in Thailand, participants who have travelled from/through countries which have been declared Yellow Fever Infected Areas, must provide an International Health Certificate at the Health Control Office before proceeding to immigration, proving that they have received a valid Yellow Fever vaccination. A valid vaccination certificate means that the vaccine was administered at least 10 days prior to travel to the affected country. The International Health Certificate must also be submitted together with the visa application form. Please find the list of countries that are declared Yellow Fever Infected Areas and more detailed information on the Thai Ministry of Foreign Affairs' website below: <http://www.mfa.go.th/main/en/services/4908/15384-List-of-countries-which-require-International-Heal.html>

➤ Thailand is currently experiencing ongoing sporadic transmission of the mosquito-borne Zika virus. All participants are advised to protect themselves from mosquito bites while in Thailand. Given possible transmission of the disease to unborn babies, pregnant women should consider postponing travel to Thailand or talk to their doctor about the implications of traveling to Thailand during this time.

2. INFORMATION FOR YOUR ARRIVAL AND STAY IN BANGKOK

2.1. Meeting Venue:

Centara Grand at Central Ladprao
1695 Phaholyothin Road, Chatuchak, Bangkok 10900
Tel: +66 (0) 2541 1234
<https://www.centarahotelsresorts.com/centaragrand/cqlb/>

2.2. Transport from the airports

SUVARNABHUMI INTERNATIONAL AIRPORT (BKK) https://www.bangkokairportonline.com/	DON MUANG INTERNATIONAL AIRPORT (DMK) http://www.donmuangairport.com/
Public Metered Taxi <i>You will need to withdraw or exchange Thai Baht at the Airport before going to the taxi area.</i>	
<ul style="list-style-type: none"> ➤ Line / queue up at the public meter-taxi kiosks on level 1 (ground level) to receive a ticket/coupon (there should be several lines for these). At the kiosk, request a normal (sedan) taxi if you are one or two persons, or get a van if you are three or four persons; the maximum number of riders in a van is four. ➤ On the ticket /coupon, there is a taxi Lane Number in BOLD print; look for that number above the taxi bay across the driveway. ➤ <u>Journey time</u>: the hotel is approximately 35-minutes (depending on traffic) via expressway. ➤ <u>Estimation cost</u>: approximately 425 Baht (300 Baht + 50 Baht (extra charge for taxi queue at the airport) + 75 Baht (toll fees if you instruct the taxi driver to take the expressway – which is highly recommended)). Ensure you have small change of at least 100 Baht denominations, as taxi-drivers usually do not have change for larger ones. ➤ If the taxi gets lost, ask the driver to call/phone the hotel for directions (have the hotel phone number with you). ➤ Taxi route in Annex II 	<ul style="list-style-type: none"> ➤ The Taxi Stand is located in front of the Arrival Halls International & Domestic Passenger Terminals. ➤ Line / queue up at the public meter-taxi kiosks to receive a ticket/coupon (there should be several lines for these). At the kiosk, request a normal (sedan) taxi if you are one or two persons, or get a van if you are three or four persons; the maximum number of riders in a van is four. ➤ On the ticket /coupon, there is a taxi Lane Number in BOLD print; look for that number above the taxi bay across the driveway. ➤ <u>Journey time</u>: the hotel is a 20-minute (depending on traffic) drive by the elevated highway. ➤ <u>Estimation cost</u>: approximately 200-225 Baht. Ensure you have small change of at least 100 Baht denominations, as taxi-drivers usually do not have change for larger ones. ➤ If the taxi gets lost, ask the driver to call/phone the hotel for directions (have the hotel phone number with you). ➤ Taxi route in Annex II
Limousine <i>The limousine services are much more expensive, ranging from 1000 Baht to 1500 per car. Please find more detailed information at: https://www.limousine.in.th/</i>	
Public Transportation	
<ul style="list-style-type: none"> ➤ MRT City Line from BKK to Makkasan City Air Terminal/Phetchaburi and MRT Blue from Phetchaburi to Phahon Yothin (450 m walking distance to the hotel). 	<ul style="list-style-type: none"> ➤ Bus 555, 510, 29 or 538 Inbound, from Donmueang to Rongrian Ho Wang (170 m walking distance to the hotel).

2.3. General Transportation Information

- BTS Sky train (www.bts.co.th): the trains run regularly between 06h00 and midnight (ticket 15-55 THB). Most automatic machines only accept coins, but change can be made at the information counters.
- MRT (www.bangkokmetro.co.th): run between 06h00 and midnight (ticket 16-40 THB).
- Taxi: All official taxis are equipped with a meter.
- Public Buses (www.bmta.co.th): run between 05h00 to 22h00 or 23h00 (ticket 11-23 THB).

2.4. Emergency Contacts in Bangkok

- Please note there will be first aid/medical personnel on standby at the hotel.
- If you should face any problems in Bangkok, please contact:

Police general emergency call	191
Fire	199
Ambulance and rescue	1554
Tourism Police	1155

2.5. Climate and Clothing

➤ The rainy season in Thailand lasts from July to October. The weather remains sunny but intense bursts of rain are to be expected, from afternoon showers to major flooding. Temperature are expected to range between 25°C to 33°C approximately, with relative high humidity at times. For more information on current weather forecasts, please visit <https://www.tmd.go.th/en/province.php?id=37>. It is advisable to bring an umbrella and also your own appropriate clothes (a light jacket / shawl or scarf) as the meeting room will be fully air-conditioned.

➤ **IMPORTANT:** For all reception/functions wherein the Princess will be present (including the Opening ceremony on 5 July 2019), female participants must wear **clothing that covers their shoulders, skirts or dresses that cover their knees (no trousers are permitted), and shoes that cover their toes and soles (sandals and open-toed high heels are not permitted).**

2.6. Foreign Currency

➤ The currency in Thailand is the Thai Baht (THB). In June 2019, 1 US dollar was equal to approximately to 31 THB and 1 Euro to approximately 35 THB (*This rate is subject to fluctuation and may be modified without prior warning*).

➤ Currency exchange facilities are available at hotels and all over Bangkok. Banks and exchange offices usually offer the best rates. It is possible to withdraw money from ATMs with the main international cards; the most common cards used in most stores are Visa, MasterCard and American Express.

➤ Any person who carries an aggregate amount of foreign currency exceeding US\$20,000 or its equivalent into or out of the Kingdom of Thailand shall declare such amount of foreign currency to a Customs Official. Failure to make such a declaration or making any false declaration to a Customs official is a criminal offence.

2.7. Travel Advisory

➤ Participants are advised to be respectful of Thai customs at all times. Please note that Thailand has laws against making negative comments about the institution of the monarchy. Such laws are strictly enforced and are applicable to spoken, written, gestures and electronic communication, including social media.

2.8. Electric Plug and Socket

➤ The electric power in Thailand is 220V running at 50Hz and the plug types used are either type A, type B, or type C*. A hybrid socket is almost universally found, which accepts a combination of the aforementioned plug types. Delegates are strongly encouraged to carry their own adapters for use with laptops and other electrical appliances as the Secretariat will not be able to provide these. In case of need, adapters can be purchased from shops in the city dealing in electronic and electrical items.



Type A



Type B



Type C



Hybrid Socket

3. MEETING VENUE AND ROOMS

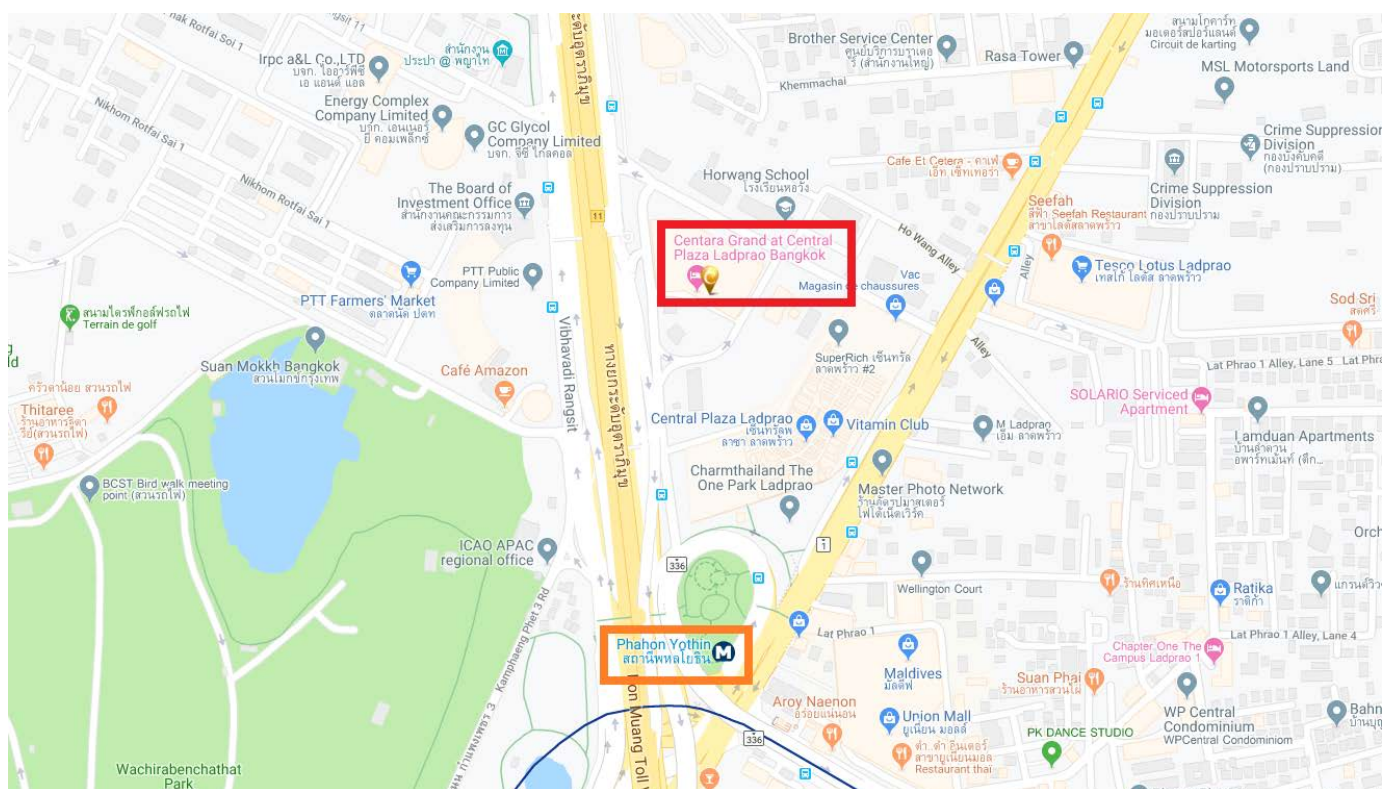
3.1. Meeting Venue and Meeting Rooms (see Floor Plans in Annex III)

- The meetings will take place at the Centara Grand at Central Ladprao.
- With regard to the meeting rooms, please note the following:

Friday 5 July		
08h00-12h00	Opening Ceremony Keynote Addresses Plenary 1 and 2	Vibhavadee Ballroom BC, L Floor
14h30-18h20	Ethical and Societal Challenges toward Genome Technology	Vibhavadee Ballroom A, L Floor
	AI, Robotics and Big Data: Giving Legitimacy to Homo Digitus	Vibhavadee Ballroom B, L Floor
	Towards Climate Change Ethics Implementation	Vibhavadee Ballroom C, L Floor
	Building up the Culture of Research Integrity in the Developing World	Ladprao Suite, Mezzanine Floor
19h30	Dinner (<i>by invitation only</i>)	Vibhavadee Ballroom A, L Floor
Saturday 6 July		
08h30-17h40	Plenary 3, 4, 5, 6, 7 and 8 Presentation of the Bangkok Statement Closing Remarks	Ladprao Suite, Mezzanine Floor

4. ANNEXES

Annex I Close-up map of the hotel location



Annex II Taxi Routes from the airports to Centara Grand at Central Plaza Ladprao

1. BKK to Centara Grand at Central Plaza Ladprao

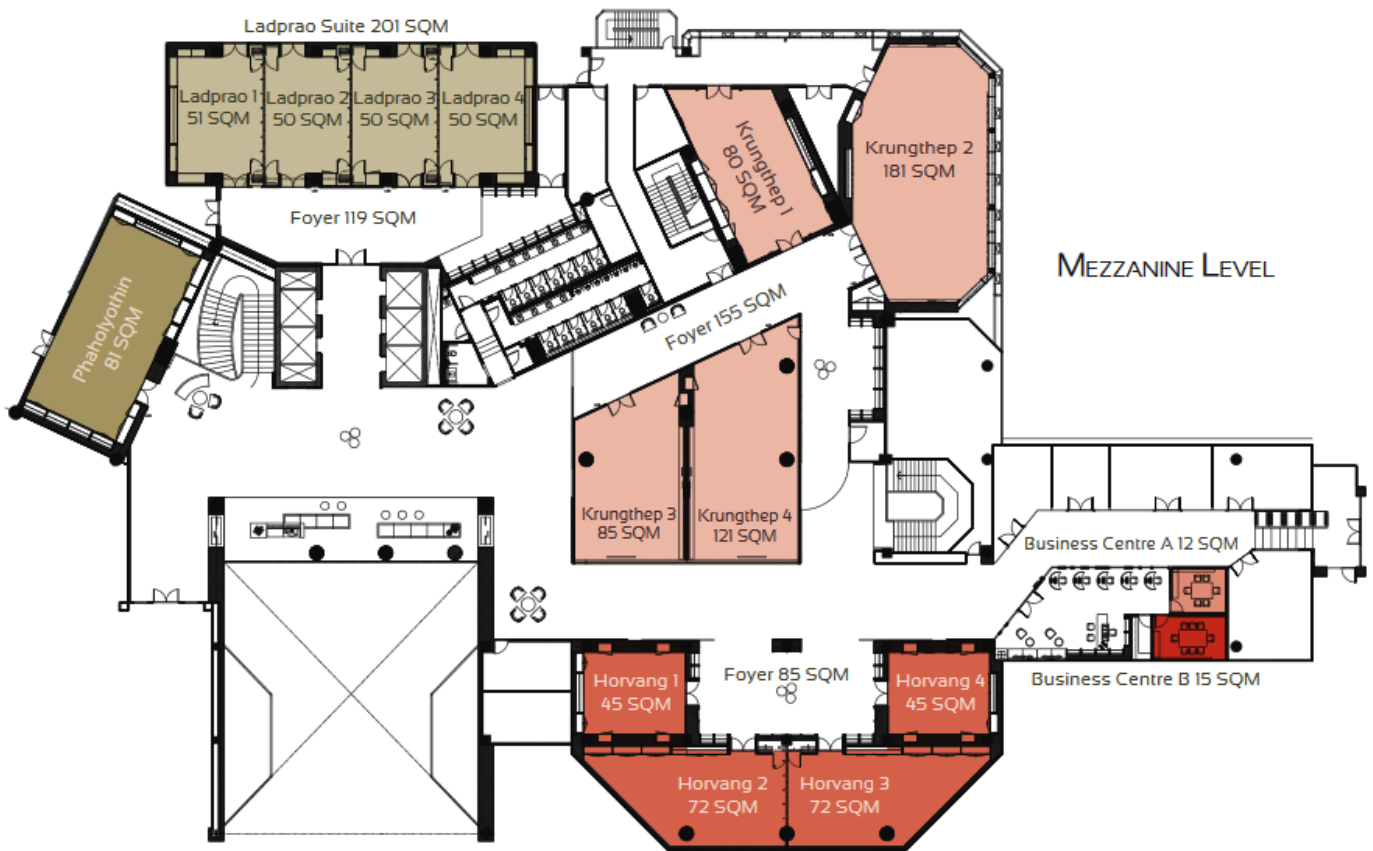
A screenshot of a mobile application interface for taxi routes. The top bar shows the origin 'Aéroport de Suvarnabhumi (BKK)' and the destination 'Centara Grand at Central Plaza Ladprao'. Below this, a yellow banner provides the route details: 'Taxi de Aéroport de Suvarnabhumi (BKK) à Centara Grand at Central Plaza', '26min', 'Aller simple à partir de: \$10 - \$13 usd', and '36.4 km'. The 'Taxi Détails' section shows a vertical line representing the route from 'Aéroport de Suvarnabhumi (BKK)' to 'Centara Grand at Central Plaza Ladprao Bangkok'. The 'Agence de taxi' section lists 'Grab Taxi' and 'Good Taxi Thai' with their respective websites and a phone number '+66 85 046 6356'. The background is a map of Bangkok with a yellow line indicating the taxi route.

2. DMK to Centara Grand at Central Plaza Ladprao

A screenshot of a mobile application interface for taxi routes. The top bar shows the origin 'Aéroport de Don Muang (DMK)' and the destination 'Centara Grand at Central Plaza Ladprao'. Below this, a yellow banner provides the route details: 'Taxi de Aéroport de Don Muang (DMK) à Centara Grand at Central Plaza', '9min', 'Aller simple à partir de: \$7 - \$9 usd', and '11.9 km'. The 'Taxi Détails' section shows a vertical line representing the route from 'Aéroport de Don Muang (DMK)' to 'Centara Grand at Central Plaza Ladprao Bangkok'. The 'Agence de taxi' section lists 'Grab Taxi' with its website 'grab.com'. The background is a map of Bangkok with a yellow line indicating the taxi route.

Annex III
Centara Grand at Central Ladprao – Floor Plan (Mezzanine Level or M Level)

CENTARA
GRAND
AT CENTRAL PLAZA
LADPRAO BANGKOK



Centara Grand at Central Ladprao – Floor Plan (L Level)

CENTARA
GRAND

AT CENTRAL PLAZA
LADPRAO BANGKOK

