

Melton Central Community Hub & Kurunjang Community Hub UNESCO Conference October 2019

A thriving community where everyone belongs



Introduction

- Council aims to support communities to thrive and connect
- Does this through Strategies, Programs, Events & Capital Projects
- Community Learning Plan
- Community Learning Board
- Intercultural Plan & Interfaith Plan
- Intercultural Advisory Committee
- African Communities Working Group
- Melton Interfaith Network
- Melton Central Community Centre & Kurunjang Community Hub

A thriving community where everyone belongs



Melton Central & Kurunjang Community Hubs

- Partnership with State Government of Victoria
- Melton Central is a redevelopment of an existing small facility in Melton CBD
 - Aims to integrate Adult/Community Education with Settlement Support
 - 120m2++ for office accommodation
 - Multiple program spaces and other informal spaces
 - Art Rooms x 2
- Kurunjang Community Hub emerged out of Community Satisfaction Surveying
 - Partnership with State School Building Authority & Kurunjang Primary
 - Teaching Kitchen/garden and Community spaces with office accommodation
- Representative of Council intent and effort to be active in supporting community
- Both are examples of wanting to do something differently.

Melton Central

- Aims to seamlessly integrate community education with migrant and refugee settlement support services.
- Anchor tenant is Djerriwarrh Community Education – significant partner
- Aim is to establish a “Melton Migrant Resource Centre” on site
- Office accommodation for settlement support, youth, legal, and other organisations willing to commit to Melton
- Will provide driver to coordinate/centralise support service funding for Melton
- Access to network of facilities to outreach services
- Social Enterprises and/or start-ups
- Connection to Western BACE business incubator
- Social gathering space

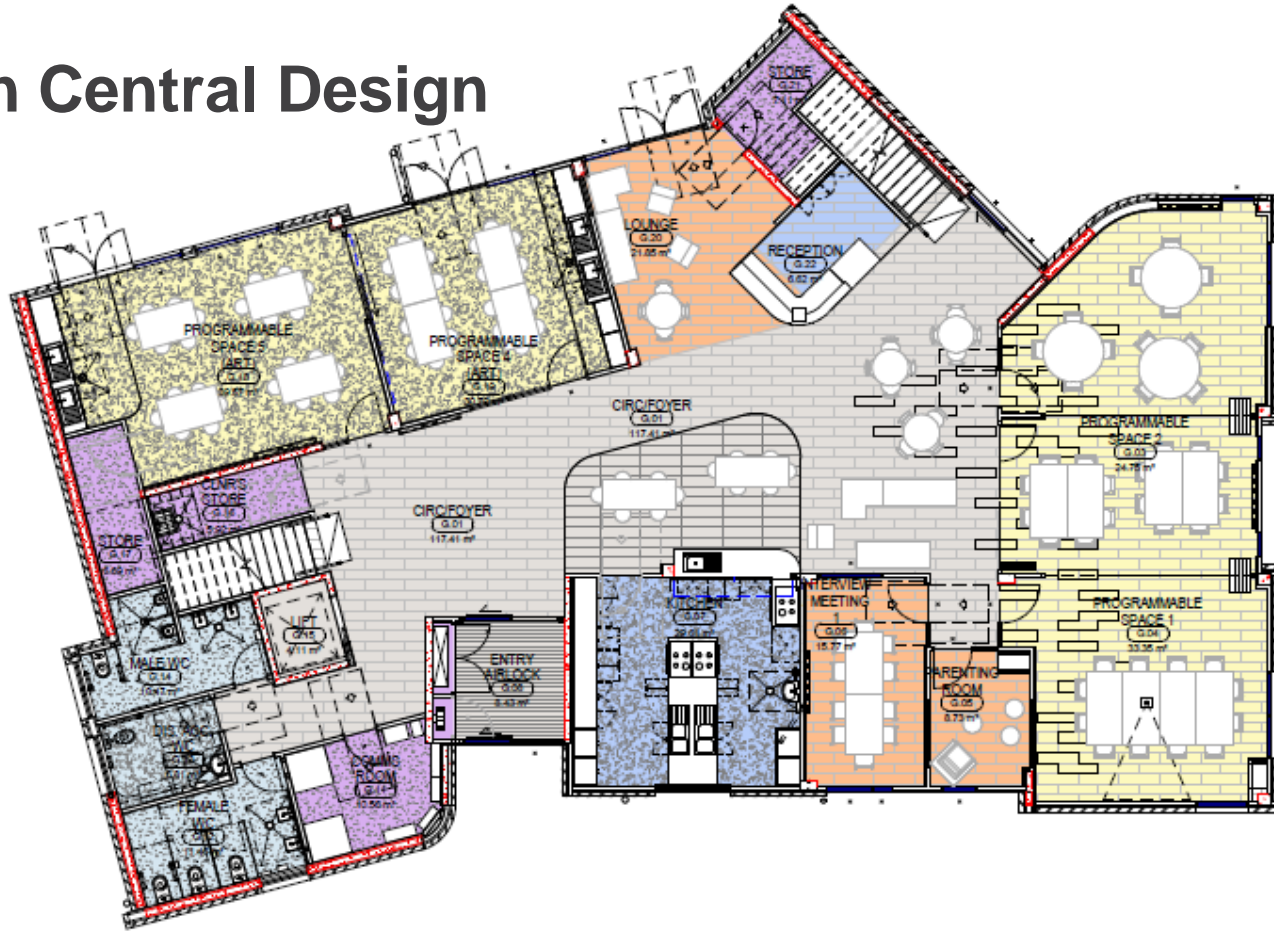
Melton Central Design



A thriving community where everyone belongs

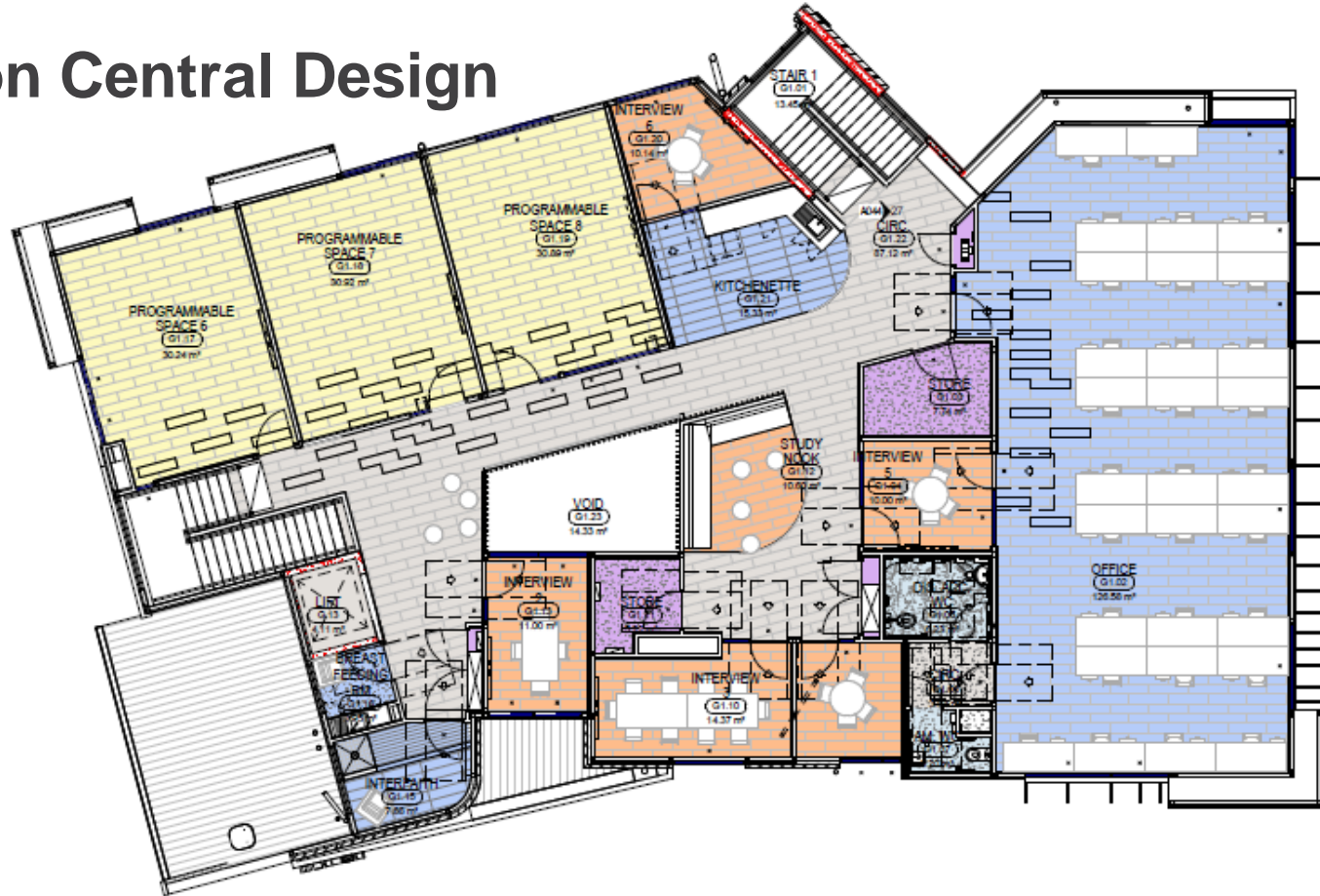


Melton Central Design



A thriving community where everyone belongs

Melton Central Design



A thriving community where everyone belongs

Kurunjang

- Partnership with Kurunjang Primary School and Kurunjang Secondary School
- Kurunjang suburb experienced rapid community demographic change
- Community was dissatisfied with lack of local opportunities
- Hub focus is on healthy living curriculum and community education and courses
- Aims to align school curriculum with home life experiences – ie parents experience what their children are learning.
- Social Enterprise Café & catering
- Social gathering spaces

Kurunjang Hub Design



A thriving community where everyone belongs

Kurunjang Hub Design



A thriving community where everyone belongs