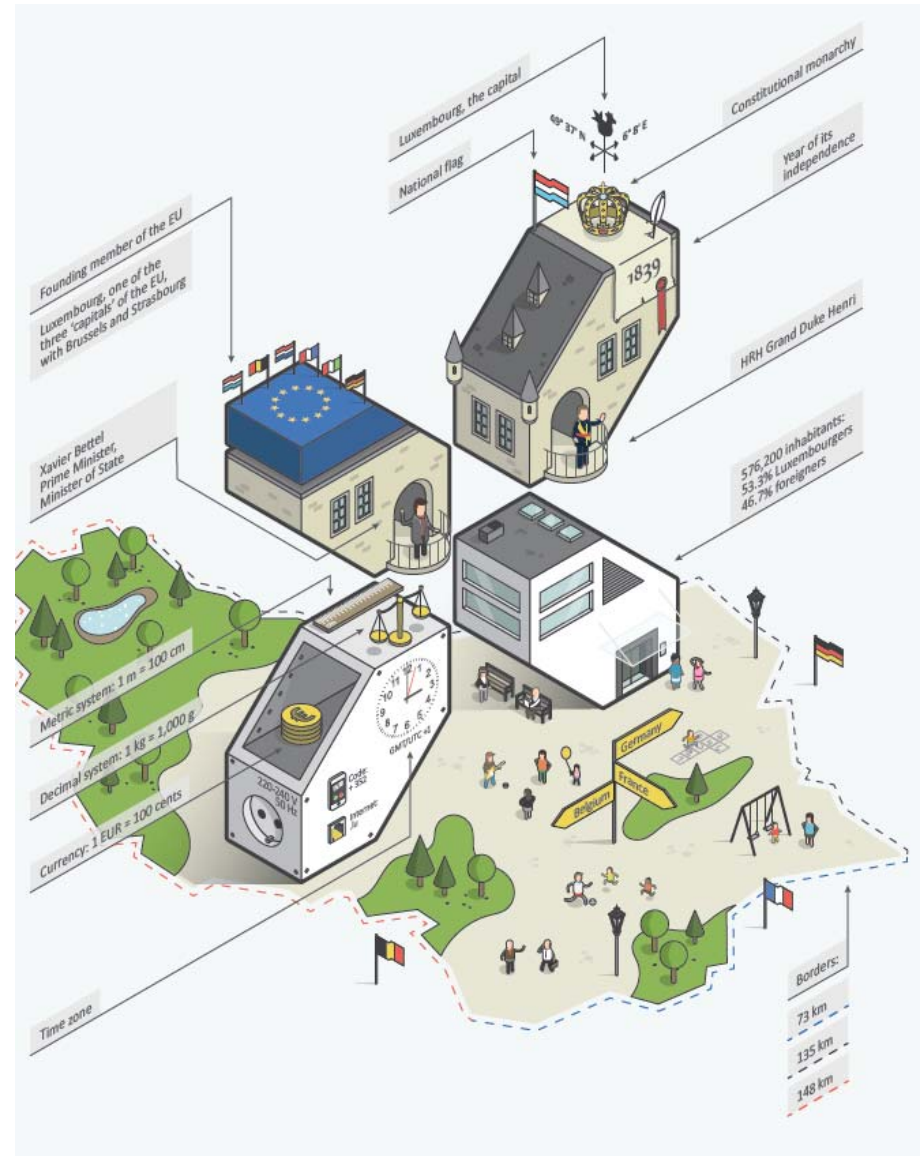


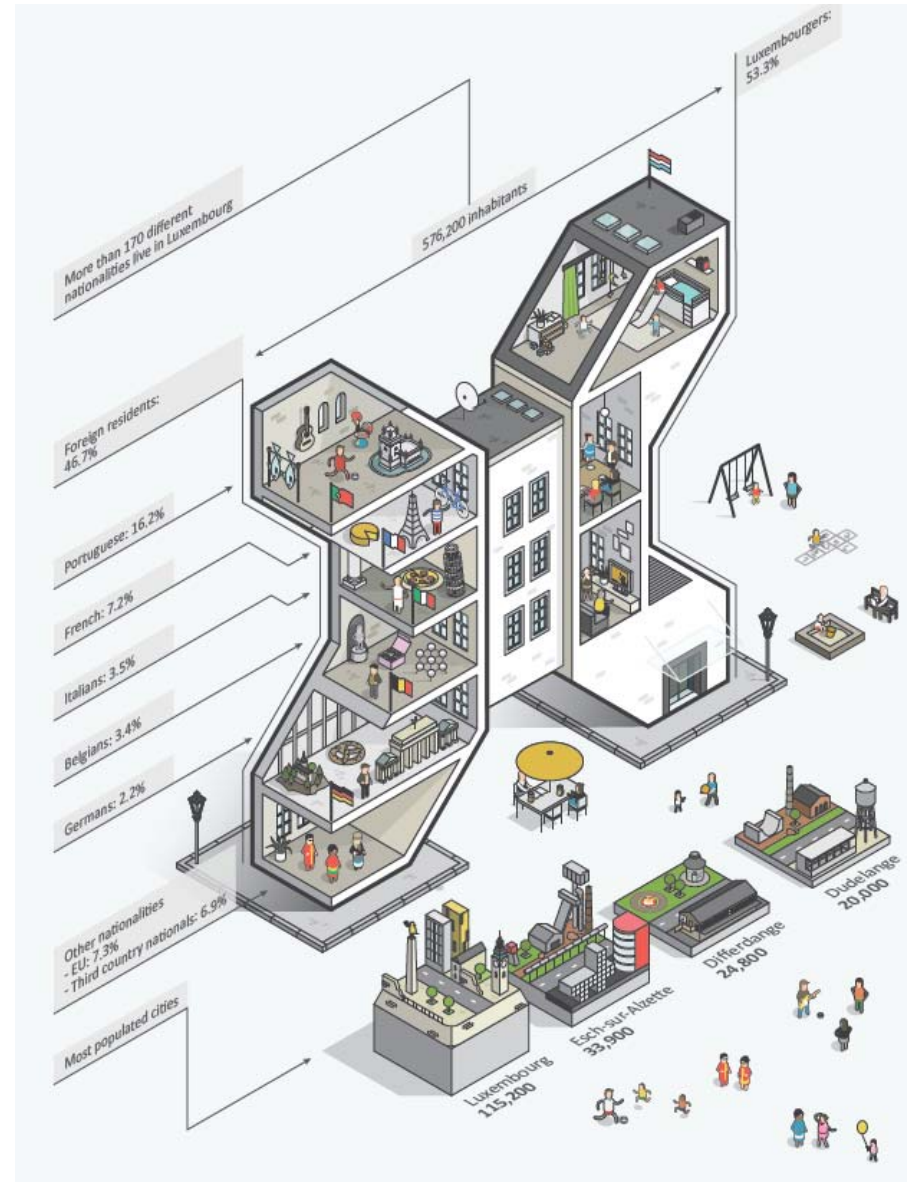
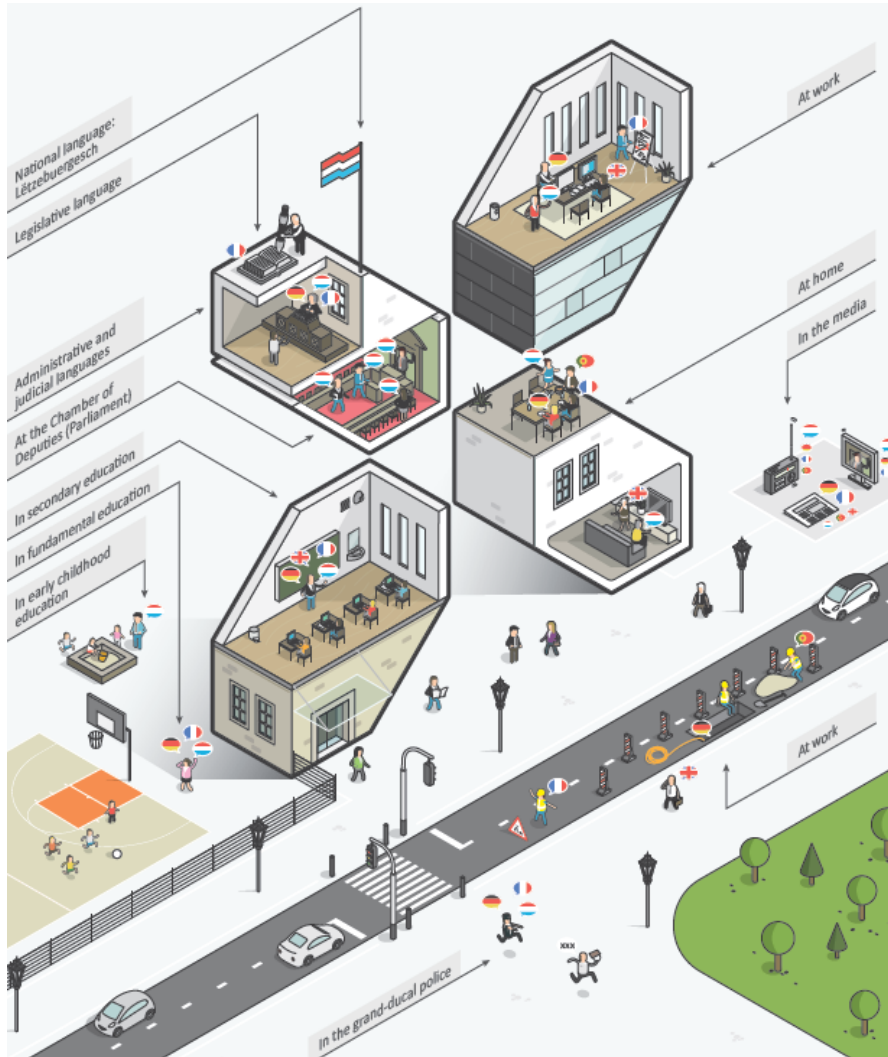
LUXEMBOURG AT A GLANCE



LE GOUVERNEMENT
 DU GRAND-DUCHÉ DE LUXEMBOURG
 Ministère de l'Éducation nationale,
 de l'Enfance et de la Jeunesse

Service de la formation des adultes

LU A MULTICULTURAL AND MULTILINGUAL COUNTRY



CHALLENGES FOR ADULT EDUCATION LU

Integration :

- immigration from Europe
- global economy -> international work force
- refugee crisis

Inclusion :

- low qualified
- unemployed
- poor and working poor

Increase engagement in LLL :

- individuals
- communities
- labor market



ADULT EDUCATION **LU** : POLICY AND GOVERNANCE

20th century:

- Generalisation and obligation of education
- In the **nineties** LU set up its framework for adult learning
- Law on adult learning
 - Law on continuous vocational education and training

Since 2000 :

- Individual training leave
- Validation of prior learning
- Second chance school
- Integration scheme for non nationals
- National language institute (inll.lu)
- UNI.lu – study offers for adults



ADULT LEARNING IN **LUXEMBOURG** : INDIVIDUAL LEARNING PATHWAYS IN PRACTICE

THE L4S – LEARN FOR SUCCESS WORKSHOPS



L4S (Learn for Success) :
Personalized workshops

FREQUENT GOALS OF L4S STUDENTS	EXAMPLES
Revision of admission exams to return to education or start training during their career	Return to high school / university as a working adult (caregiver, on-the-job educator)
Working on weak or overlooked skills for a career change or a personal challenge	Writing skills for a native speaker with limited formal education
Improving language skills in a specific professional context for someone starting a (new) career	Writing commercial emails
Training speaking skills for a personal challenge	An 18-year-old who starts her own business and wants to engage with potential customers

Traditional language courses vs. L4S workshops :
Initial assessment

GROUP LANGUAGE COURSE	L4S WORKSHOPS
Interview and / or written test to assess the level	Interview which allows to determine previous learning experiences, needs (project), personal & professional limits influencing the learning process
Availability of courses within the institution	Possibility of redirecting the learner towards offers more suitable for their needs

Traditional language courses vs. L4S workshops :

Start & end of the courses

GROUP LANGUAGE COURSE	L4S WORKSHOPS
Predetermined by the training institution	Decided on by the learner (based on their project) Possibility of immediate start

Traditional language courses vs. L4S workshops :

Schedule / frequency

GROUP LANGUAGE COURSE	L4S WORKSHOPS
<p>Predetermined by the institution, with a fixed regularity</p> <p>Poor attendance may lead the learner to stop the course</p>	<p>Chosen by the learner & can change from week to week depending on their availability and needs</p> <p>No penalties for a temporary stop or reduction in frequency; the learner knows they can pick up where they left off</p>

Traditional language courses vs. L4S workshops :

Programme

GROUP LANGUAGE COURSE	L4S WORKSHOPS
Identical for all the learners of the group	Individual ; adapted throughout the training period depending on progress or encountered difficulties.
Determined by the institution or the CEFR level	Possible project changes are taken into account
Generally a book (followed in a more or less linear manner) chosen by the institution or the teacher	Varied. The learner is encouraged to be involved in deciding on the contents of the course

Traditional language courses vs. L4S workshops :

Skills worked on

GROUP LANGUAGE COURSE	L4S WORKSHOPS
<p>Oral, written and communication skills Depending on course level (A1, A2, B1...)</p>	<p>Focus on weak or missing skills Focus on skills needed for the project Possibility to “rebalance” different skills by working specifically on overlooked skills to allow the learner to later take part in a language course suitable to their level</p>

Traditional language courses vs. L4S workshops :

Interactions

GROUP LANGUAGE COURSE	L4S WORKSHOPS
Groups of on average 10 to 20 learners of about the same level	Individual coaching in a workshop of up to 8 people with different goals (on average 2-5)
Group dynamic	Individual or pair work

Traditional language courses vs. L4S workshops :

Offer 2017 - 2018

GROUP LANGUAGE COURSE	L4S WORKSHOPS
Depending on institution	French (16h / week / 4 days) German (5h / week / 2 days) English (5h / week / 2 day) Mathematics (6h / week / 3 days) Price: €3.30/hour