

Details of the Regional Scanning of Country Priorities and Needs Across the Six Thematic Areas of KIX Hub

**Presented in the KIX Hub 19 Third Virtual Meeting for
Country Focal Points and Partners**

**By Tilaye Kassahun (PhD)
KIX 19 Hub Manager**

June 11,2020

Outline

- Background of the In-depth Scanning and Priority Mapping
- Purpose of the Assignment
- Scope of the Assignment
- Methodology
- Deliverables
- Roles and Responsibilities of Key Stakeholders
- Action plan

Background of the In-depth Country Mapping

• Education challenges

- Education is entangled with a **host of problems** in Africa
- Some of the most critical problems include: **teacher training, children's enrollment, gender equity, quality of learning processes, learning outcome/gain, institutional leadership, policy & finance, ICT, and data to inform education system planning and decision-making.**
- These problems are believed to be **caused** partly by:
 - the fragmentation of knowledge and approaches,
 - insufficient access to tools and evidence-based research, and
 - an absence of a strong global ecosystem to support the generation and uptake of evidence and innovations in the education sector.

Background, Cont'd

- Without alleviating these constraints, the **collective targets** for Sustainable Development Goal 4, the African Union's Agenda 2063 and Continental Education Strategy for Africa, **quality education for all**, will be out of reach.
- It has been reiterated in various continental strategic documents that Africa's prosperity can be achieved **only if the continent invests in the education and training of its largest population-youth**' (CESA, 2016).
- As one of the means to this end, KIX has been created from the wombs of GPE, IDRC, and the global community very recently.
- KIX is an exciting new way to connect expertise, innovation, and knowledge to strengthen national policy dialogue and planning in countries supported by GPE.

The Purpose of the In-depth Country Mapping

- To **provide up-to-date information of the major trends in data, evidence and issues impacting** the education needs of countries in line with all six thematic areas.
- To **examine and compile relevant research, evaluations, innovations, and best practices** to generate priorities and areas of focus for the regional KIX Hub.
- To **identify shared regional policy challenges** that are aligned with literature, expert opinions and, especially, key national education policymakers and stakeholders.

The Purpose of the In-depth Country Mapping

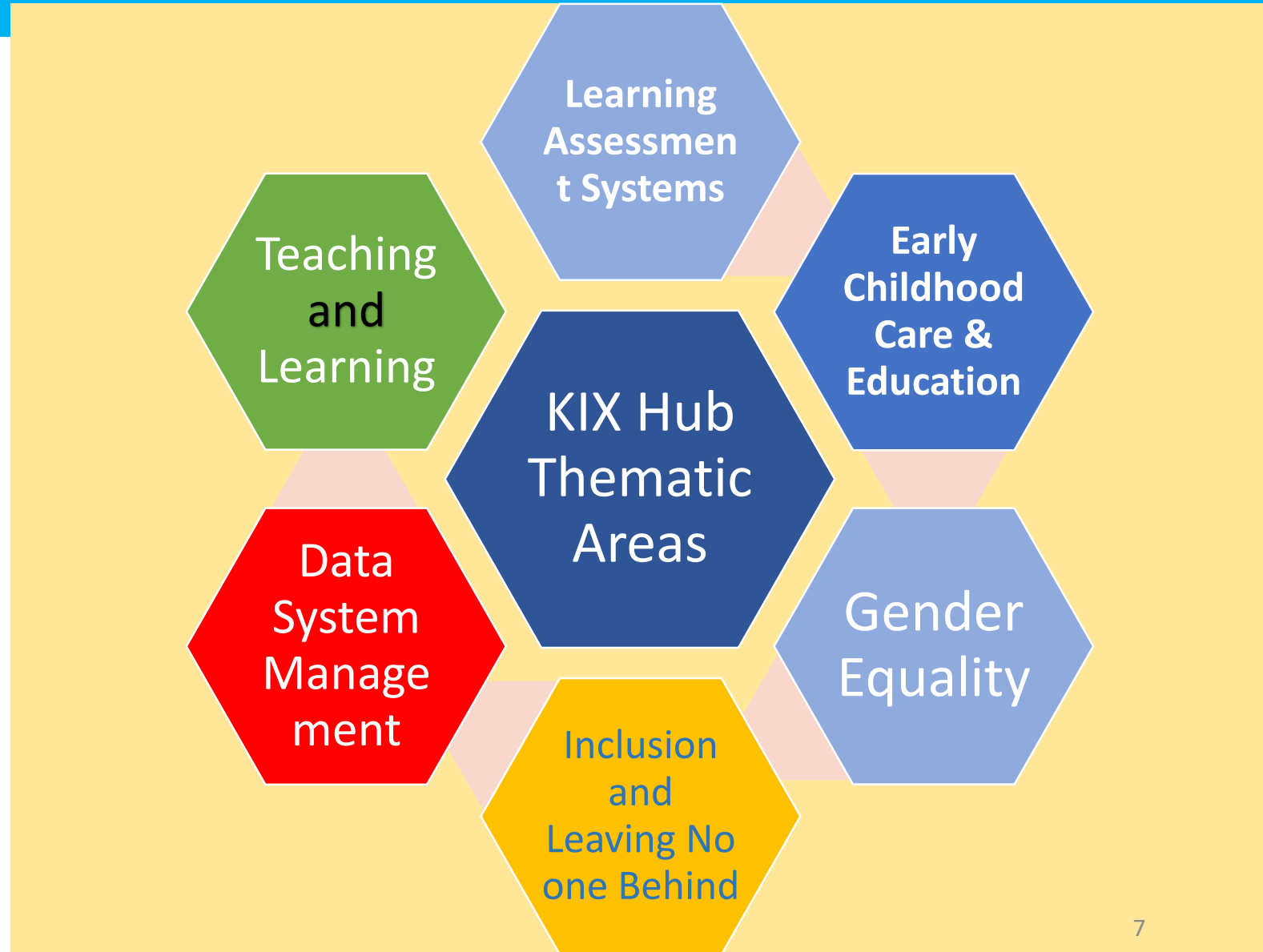
- To map out all the critical education sector stakeholders along the six KIX themes and other emerging themes within the Anglophone region.
- To undertake an in-depth assessment of country institutional capacity needs and gaps for the development of tailored DCP capacity building assessment frameworks.
- To generate an evidence-informed high-quality report with country factsheets for use and discussion at regional technical consultation workshops for DCPs to validate the selected country priorities.

Scope of the Assignment

- This assignment targets 19 countries in Anglophone Africa (EA, SA & WA)
- **Focus areas of the assessment:**

A) GPE priorities:

N.B. Any pressing emerging area may also be considered.



Scope, cont'd

B) Reform objectives (identical with the strategy and results framework of GPE):

- Equity
- Learning outcomes
- Efficiency

C) International Cooperation Modalities:

- Key international education partners
- Result-based aid mechanisms
- Baseline/target setting
- Measuring impact
- Scaling innovations
- Areas of inter-country exchange-collaboration

D) DCP institutional capacity for evidence based policy development and implementation to inform debates around the emerging agendas and priorities in the region.

Scope, cont'd

- Focus of the educational cycle: **Basic education**



Methodology

- **Design/approach:** **Mixed method** involving both **q**ualitative and quantitative methods
- **Data sources:** Primary and secondary
- **Data gathering tools:**
 - Desk review/documentary analysis,
 - Survey questionnaire,
 - Structured interview (KII), and
 - Workshop method

Methodology, Cont'd

- **Desk review of essential documents:**
 - Latest policy and planning documents
 - GPE priorities, results framework and, if available, surveys on thematic priorities (e.g. The 6 KIX thematic discussion papers)
 - Existing studies and compilations carried out in the KIX 19 Hub region (e.g. **the rapid country needs assessment report**)
 - Sectoral analysis and evaluations by donors/partners
 - Researches published in reputable journals or conference proceedings
- **Possible sources of the essential documents:**
 - MOEs of the KIX 19 Hub member countries
 - GPE country pages
 - UNESCO, UNICEF, AUC, IDRC, USAID, WB, AfDB, and DFID websites
 - KIX Hubs
 - Leading research institutes or universities
 - Key education partners
 - Reputed journals

Methodology, Cont'd

- **Sampling methods:** Purposive, snowball, stratified and simple random sampling methods
- **Sample institutions and personalities:**
 - Planning, Monitoring and Evaluation officers (Directors) from each ministry and its affiliates at provincial level
 - Senior technical officers (KIX focal persons) from each ministry and provincial offices,
 - Directors/officers in charge of each thematic area (thematic leaders) from each ministry and its affiliates at local level
 - Consortium members' education experts (GPE, UNICEF, UNESCO) in each country and regional offices
 - Key education partners in each country (e.g. WB, USAID, DFID, EU, AUC, AfDB, etc.)
 - Teachers' Unions/Associations,
 - Leading research institutions/universities across KIX 19 hub countries
 - International research organizations and think tank groups
 - Others as appropriate

Methodology, Cont'd

- **Mode of survey administration:**
 - Survey monkey platform,
 - Telephone interview (through Skype call),
 - Face-to-face interview
- **Data analysis methods:**
 - Descriptive statistics,
 - Thematic analysis/content analysis

Deliverables

- **Source documents**
- **A brief (20 pages) regional priority mapping or situational analysis report against the 6 themes**
- **The 19 country factsheets and policy briefs** on the major trends in data, evidence and issues impacting the education needs for policy development and implementation along the various key themes of the KIX Hub and other emerging issues
- **A regional report on DCP institutional capacity assessment** for evidence based policy development and implementation to inform debates around the emerging agendas and priorities in the region
- **A regional education partner mapping** report against each thematic area
- **Workshop reports** on the validation of the key findings of the regional scanning of DCPs needs

Key Actors and Responsibilities

This is a joint responsibility of all key stakeholders and you are expected to discharge your role accordingly.

Key Actors	Responsibilities
Regional Advisory Team	<ul style="list-style-type: none">• Oversee the execution of the survey and provide resource backup• Participate in validation workshop
Regional Technical Team & consortium members	<ul style="list-style-type: none">• Identify and provide source materials/documents (ESPs, ESA reports, evaluation reports, thematic strategic documents).• Guide and support the KIX Hub team during tools development , standard reporting format development and in facilitating linkages with DCPs• Produce country education fact sheets per their specialty area (e.g. UNICEF on early childhood education & care; FAWE on gender equality; etc.). The Technical Team will allocate assignments to others.• Quality assurance: Monitor the progress of the assessment and organize deliberation seminars/webinars

Key Actors and Responsibilities

This is a joint responsibility of all key stakeholders and you are expected to discharge your role accordingly.

DCP Coordinating focal points

- Identify source documents and produce country summary report per the guideline in collaboration with the thematic leads at MOE
- Comment on tools and reporting formats
- Identify education officials, experts, researchers and partners (local & international) who can participate in the survey
- Collect primary data in collaboration with the thematic leads and other resourceful persons
- Encode the data per the database format or codebook and send the same to the KIX Hub on time
- Participate in validation workshops and reflect the country's situation as appropriate.
- Orient the findings of the report (priorities) to the national education stakeholders

Key Actors and Responsibilities

This is a joint responsibility of all key stakeholders and you are expected to discharge your role accordingly.

Key Actors	Responsibilities
GPE local chapters & IDRC	<ul style="list-style-type: none">• Supply necessary documents (e.g. ESPs, ESAs, the six thematic area discussion papers, share the KIX Hub products)• Oversee the execution of the survey• Support the survey team by liaising with country education offices and partners• Participate in the validation of deliverables and monitoring deliberations

Key Actors and Responsibilities

This is a joint responsibility of all key stakeholders and you are expected to discharge your role accordingly.

Key Actors	Responsibilities
KIX 19 Hub Staff	<ul style="list-style-type: none">• Prepare detailed action plan for the survey and present the same to DCPs, regional technical team and other key stakeholders for validation• Organize deliberation seminars/webinars in consultation with the Regional Technical Team to orient the methodology, tools, & reporting formats• In consultation with the Technical Team, assign responsibilities to the key stakeholders based on their proximity and specialty.• Monitor the data collection, preparation of country fact sheet, and produce comprehensive reports and sub-regional comparison report• Produce periodic progress report to Technical Team and consortium members• Facilitate the validation of deliverables• Disseminate the findings to DCPs and other stakeholders

Plan of action: Timeframe for major activities

Major activity	Completion time
Inception phase: Assigning survey team; preparing detail schedule, methodology, and tools; establishing contacts at country level	June 20, 2020
Data collection phase: Collecting primary data and conduct desk review	July 10, 2020
Data analysis and reporting: Conduct data analysis and produce a partial report to show priority mapping (20 pages)	July 13, 2020
Validation: Present the findings to the key stakeholders for validation purpose of the partial report	July 14, 2020
Submission: Produce final report (20 pages) and submit it to IDRC	July 18, 2020
Full report: Produce draft full report per the complete outline	August 15, 2020
Validation: Review the report to validate it (Technical Team and DCP focal points)	August 20, 2020

Thank you for your attentive listening!

Tilaye Kassahun
e-mail: t.kassahun@unesco.org