

COVID-19 and Schools

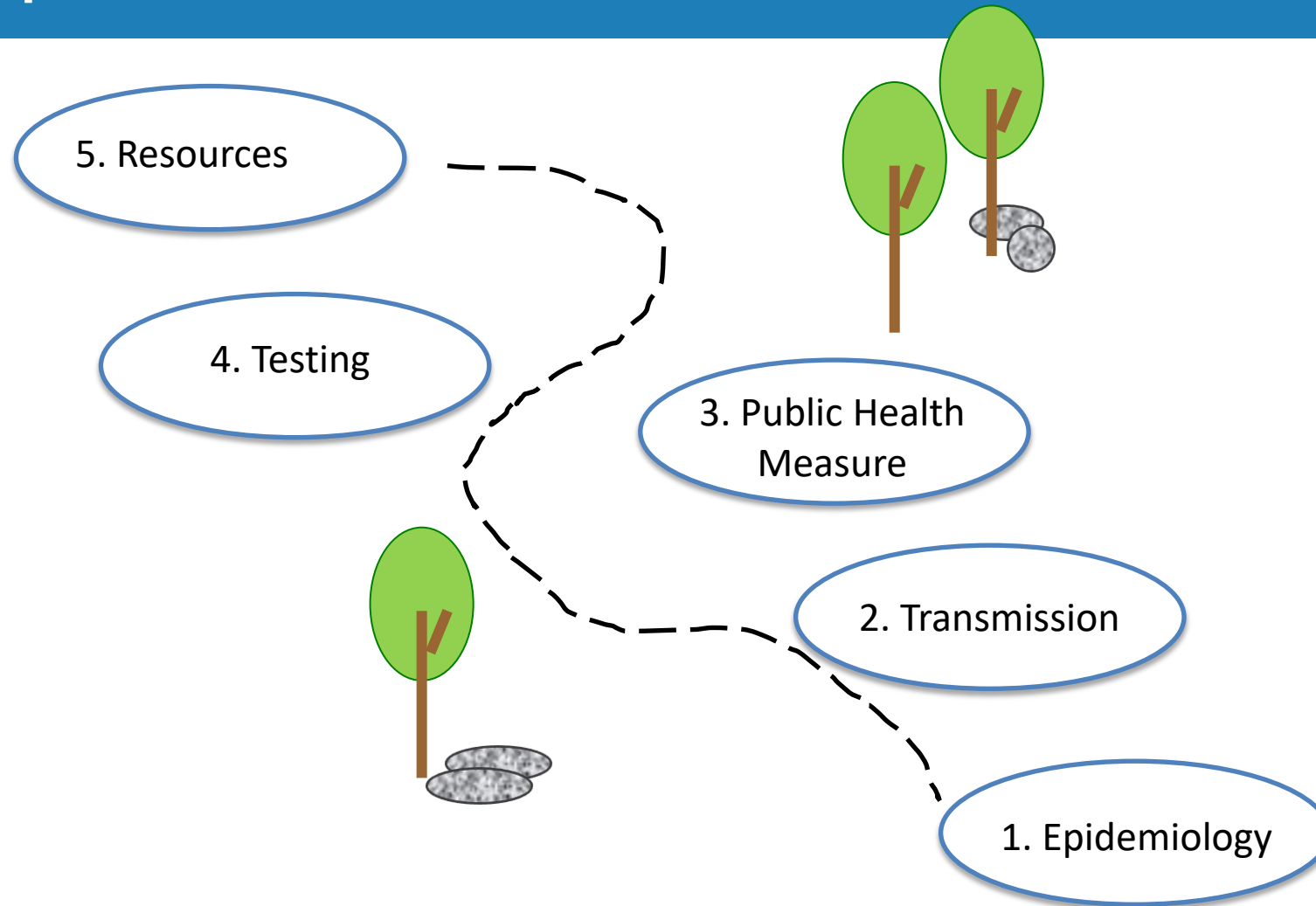


Disease and Health Dimensions

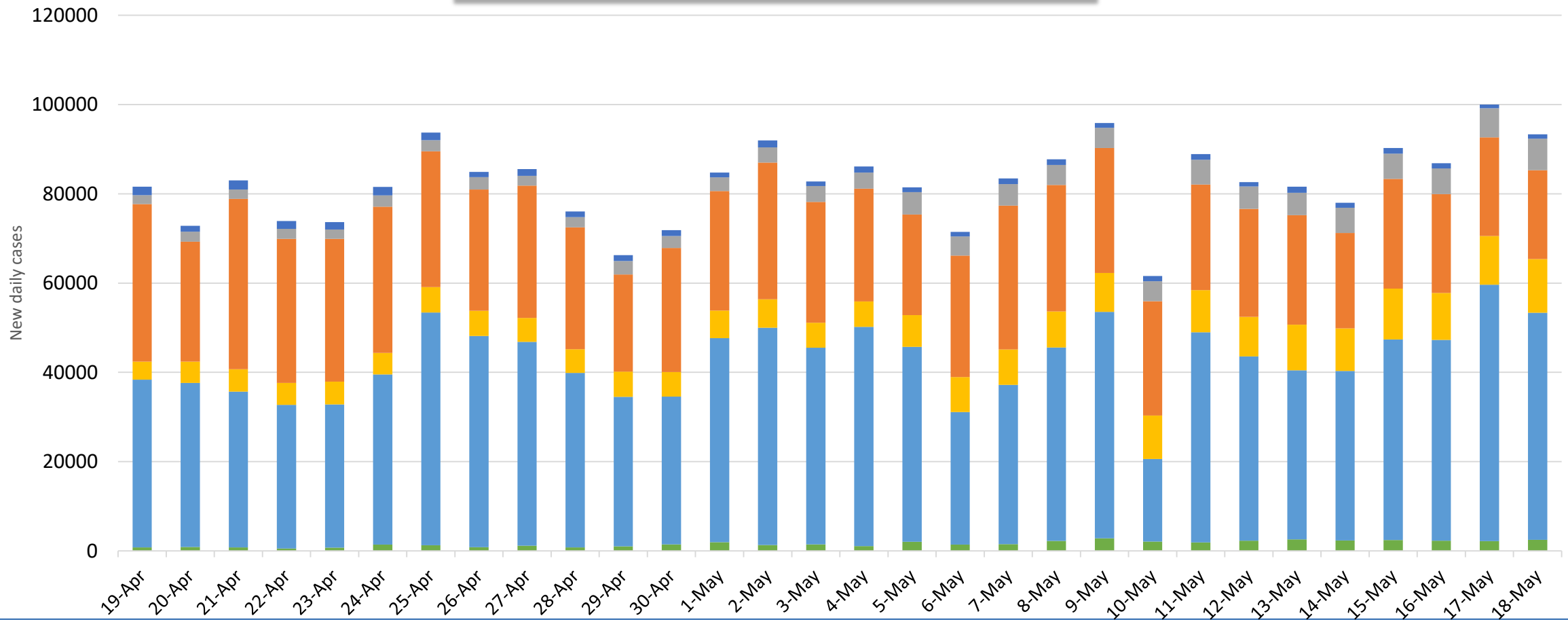
May 20, 2020

Shalini Desai, MD, MHSc
WHE, Infodemics Pillar
WHO Health Emergencies

Road Map



New cases of COVID-19 by day, by WHO Region



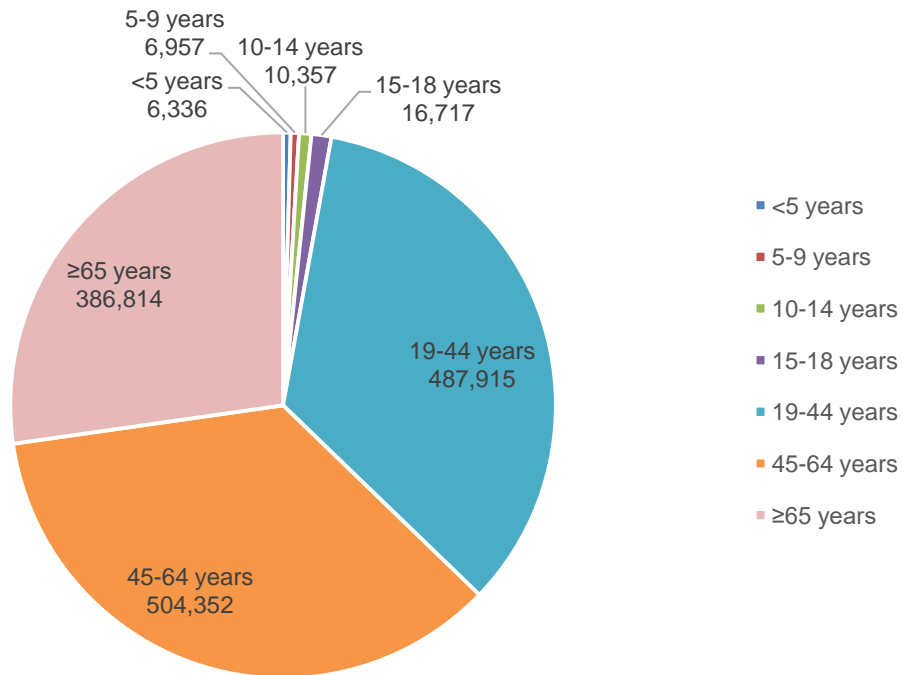
World Health Organization

AFRO AMRO EMRO EURO SEARO WPRO

HEALTH EMERGENCIES programme

Epidemiology of COVID-19

Distribution by Age of COVID-19 Cases*

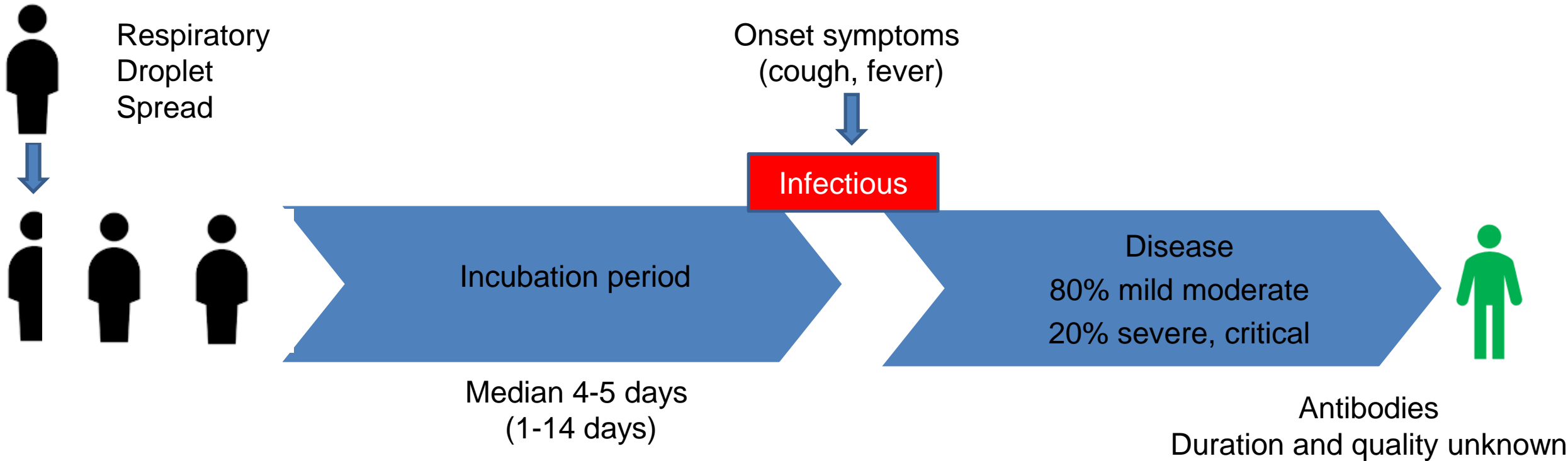


Distribution of COVID-19 Cases in Pediatric Population

Age Group	Number of cases	Percentage of cases
Under 5 years	6336	0.45
5-9 years	6957	0.49
10-14 years	10357	0.73
15-18 years	16717	1.18

*Data reported to WHO, as of May 4, 2020

Transmission of COVID-19



Transmission in school settings

- School closures are based on evidence and assumptions from influenza outbreaks
 - reduction in social contacts between students, interrupt the transmission
- Role of children in transmission of COVID-19 is unclear
- Very few studies involving educational institutions
 - Data shows little transmission in school setting
 - Related to social events linked to school or university life rather than transmission within classrooms

Jackson C, Vynnycky E, Mangtani P. The relationship between school holidays and transmission of influenza in England and Wales. *Am J Epidemiol* 2016; 184: 644–51.

Danis et al Cluster of coronavirus disease 2019 (Covid-19) in the French Alps, 2020. *Clinical Infectious Diseases*, ciaa424, <https://doi.org/10.1093/cid/ciaa424>

COVID-19 in Scholls – the NSW experience. http://ncirs.org.au/sites/default/files/2020-04/NCIRS%20NSW%20Schools%20COVID_Summary_FINAL%20public_26%20April%202020.pdf

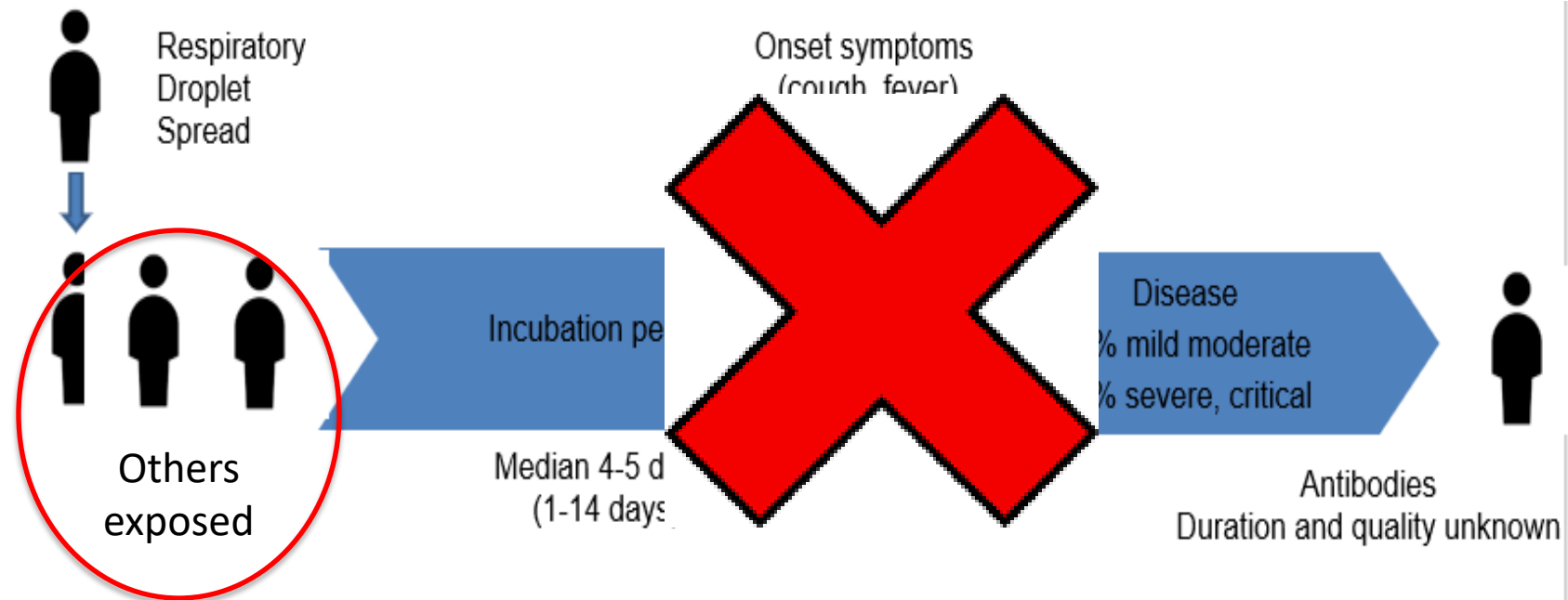
Zhang et al. *Science* 2020. Changes in contact patterns shape the dynamics of the COVID-19 outbreak in China. <https://science.sciencemag.org/content/early/2020/05/04/science.abb8001/tab-pdf>

Public Health Measures to reduce transmission

- Measures should be used in combination
- Personal protective measures
- Environmental measures
- Physical distancing measures
- Travel-related measures
- WHO recommends that all suspected cases be identified, tested, isolated and cared for, and their contacts identified, traced, and quarantined.

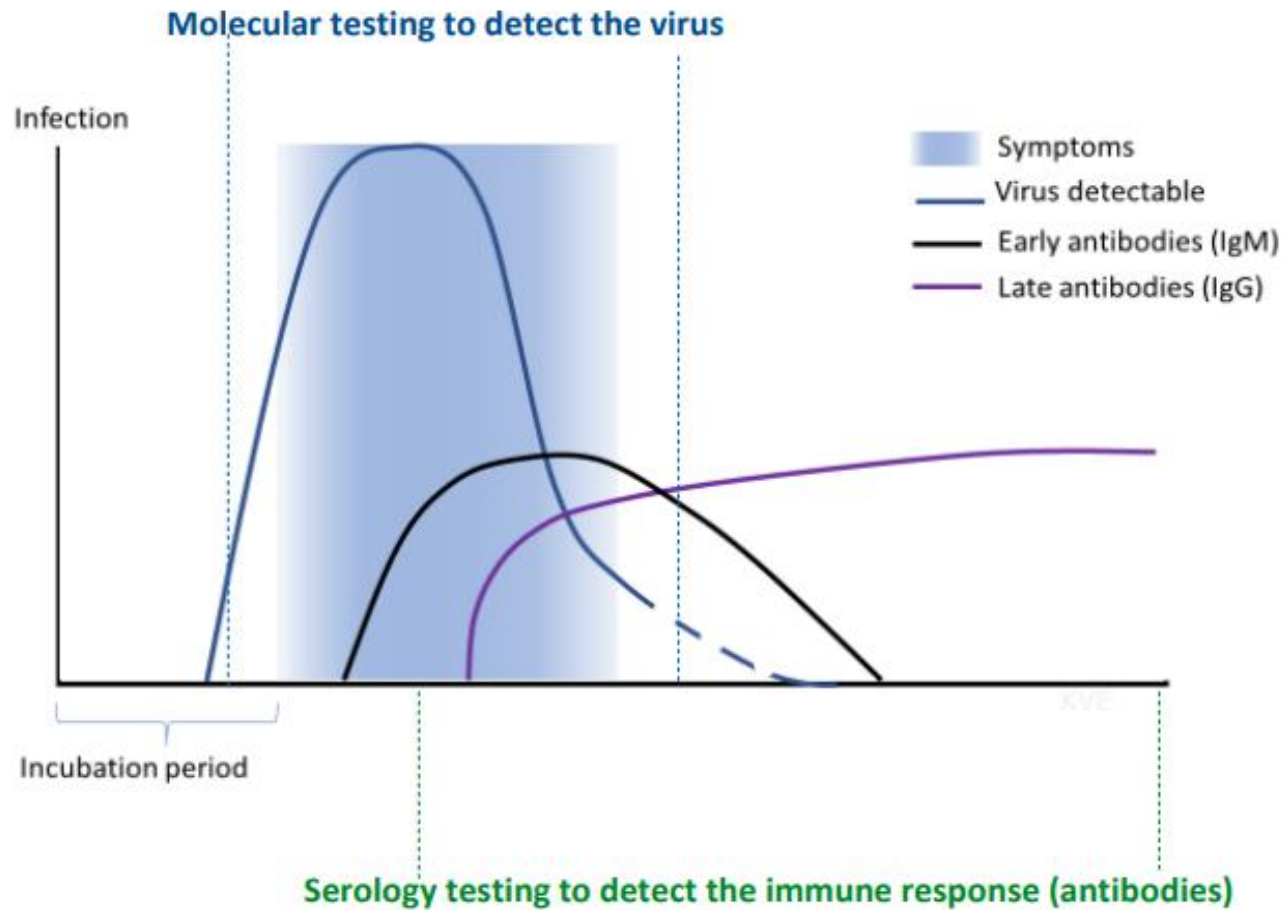
Contact Tracing

- **Purpose:** to break chains of transmission
- For COVID-19 requires:
 - **Identifying** persons who may have been exposed
 - **Quarantine**
 - Following them for **14 days** from the last point of exposure
- **GOAL:** to prevent onward transmission



Contact tracing in the context of COVID-19. <https://www.who.int/publications-detail/contact-tracing-in-the-context-of-covid-19>

Testing considerations:



- Timing of testing is important
- Ab Testing: Quality and quantity of antibodies unknown

Summary

- COVID-19 can infect children
- Illness in children is usually mild
- Children seem less likely to transmit infection
- Public health measures can help decrease transmission
- Contact tracing helps decrease transmission
- Testing – still a lot to be learned

- Research ongoing to help provide further data to inform best practices

Additional Resources

- EPI WIN web page

<https://www.who.int/teams/risk-communication/epi-win-updates>

- Public Health measures

[https://apps.who.int/iris/bitstream/handle/10665/331773/WHO-2019-nCoV-Adjusting PH measures-2020.1-eng.pdf?sequence=1&isAllowed=y](https://apps.who.int/iris/bitstream/handle/10665/331773/WHO-2019-nCoV-Adjusting_PH_measures-2020.1-eng.pdf?sequence=1&isAllowed=y)

- Annex on schools

<https://www.who.int/publications-detail/considerations-for-school-related-public-health-measures-in-the-context-of-covid-19>

