

A wooden boardwalk with railings leads through a lush green forest. The path is made of dark wood and is flanked by dark wooden railings. The forest is dense with tall trees and vibrant green foliage, creating a serene and natural atmosphere. The path recedes into the distance, leading the eye towards a bright light at the end of the walkway.

Governance and partnerships in Education

MUN Seok-Jin

Mayor of Seodaemun-gu, Pres. of Korean Learning Cities Association

20 May 2020

UNESCO Learning Cities' Response to COVID-19 GNLC Webinars

Korea's today

What is the *current situation of schools and adult education in response to COVID-19?*

Empty classrooms



South Korea reports 11,078 coronavirus cases. (as of May 19)

COVID-19 infections of teachers and students fuel concerns over school re-opening.

As coronavirus persists, teachers yearn to meet students.

Seodaemun-gu's Social Distancing Life, including Hongjecheon Walk Challenge "Walk alone"



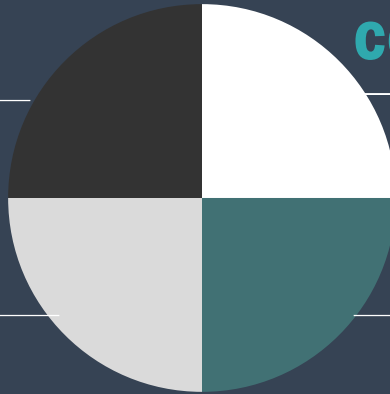
"Walk alone"

NEWSIS

What measures have been put in place to ensure the continuity of schooling and adult education?

Supporting IT and wireless network devices to schools for online classes

Organizing expert committee and establishing future-oriented education center



TA (Teaching Assistant) to strengthen online teaching competency of teachers for online school

Subsidy for private prep schools and classes when closed to comply with social distancing regulation

Seodaemun's Creative Approach to provide better learning environment

Education policy related to primary and secondary education is mainly under the authority of the national government in Korea (Ministry of Education), with Office of Education taking responsibility to provide resources and manage the school system.

Individual local governments have no direct authority on public education system, so need more creative approach to help students

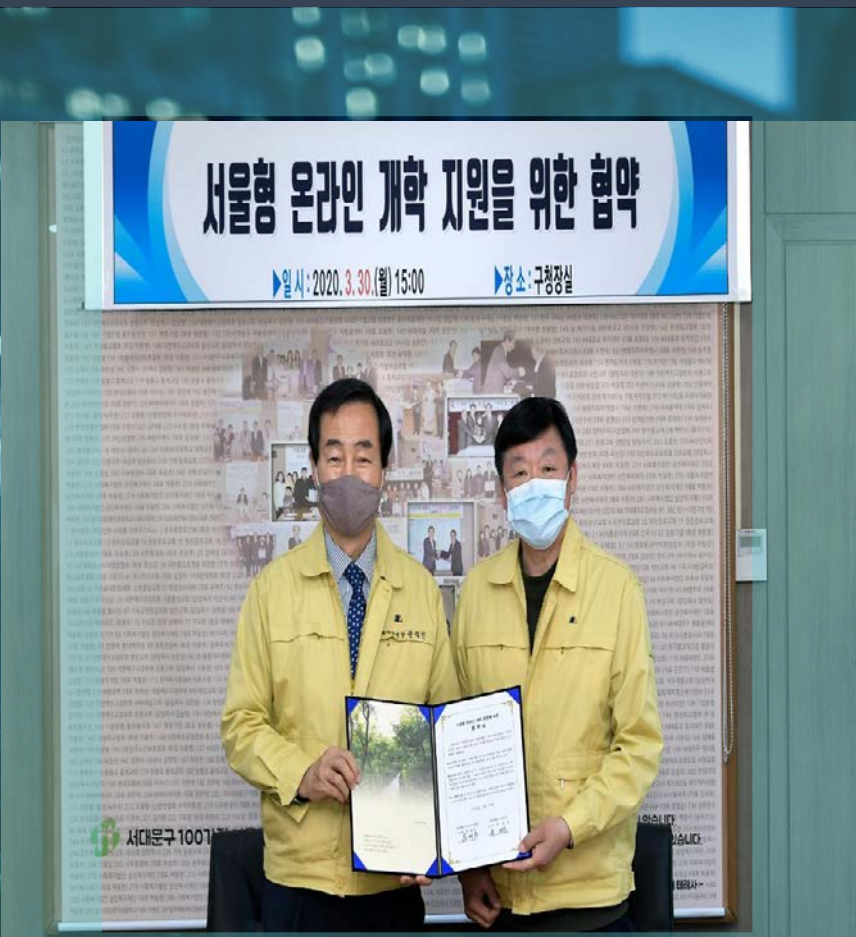
Distribution of "Career Experience Kit" :

- specially designed to help young people explore their career options, and became popular among students and parents



What partnerships have been established in the implementation of these measures?

Partnership between local government and education office



01 Seodaemun-gu and Seoul Seobu(Western) District Office of Education promised efforts to beef up remote learning systems (MOU).

02 Seodaemun-gu provided financial support of 2.6 billion won(US\$ 2 million) for tablet PC purchase and wireless network construction to 40 local schools.

➔ First move of local gov't in the nation for Including the less privileged students who has no IT resources for online classes

What partnerships have been established in the implementation of these measures?

Partnership between local government and university

Seoul National University: Developing programs

- Two projects are under way to develop learning programs with SNU.
 - 1) Citizenship learning course
 - 2) Capacity building program for future teacher
- Master students studying adult education are organized into two groups to work with faculty member for program development
- Through the projects, Seodaemun-gu and the group are discussing post-corona education methods, educational content, and the required capabilities of teachers.

Ewha Woman's University: Mentoring support

- A mentor group of 50 college students are formed
- These mentors help Seodaemun's local youth better understand class material, and achieve more in future-oriented learning environment such as online class

What partnerships have been established in the implementation of these measures?

Partnership between local government and expert groups

- Committee of the CONVERGENCE TALENT EDUCATION CENTER: university faculty, career experience center directors, school principals, and education experts in the field of the 4th industrial revolution
- Dispatch of TA(Teaching Assistant) on future technology contents: 11 experts are newly hired



**CONVERGENCE TALENT
EDUCATION CENTER**



**Committee Meeting of
CONVERGENCE TALENT
EDUCATION CENTER**



**Expert TA helps a teacher build
up the competency for online
teaching, to get prepared for
online school**

What partnerships have been established in the implementation of these measures?

Partnership between local government and life-long learning orgs.

Main partners:

- National Institute for Lifelong Education (NILE)
- Seoul Metropolitan Institutes for Lifelong Education



Source: DongA Ilbo

All adult literacy education programs have been postponed since COVID-19 breakout

Most of adult literacy learners are senior citizen and online literacy class are not a viable option due to their lack of digital literacy.

In order to increase the digital competence of adult literacy learners, Seoul Metropolitan Institutes for Lifelong Education plans to distribute **kiosk machines** for literacy education.