



# Curriculum globALE

Uwe Gartenschlaeger & Susanne Lattke





# Curriculum globALE

## Structure and Content

Uwe Gartenschlaeger & Susanne Lattke

## Curriculum globALE ...

- provides a cross-cultural, output-oriented core curriculum for trainings in the area of adult learning and education
- targets primarily *teaching* staff (course teachers, instructors, trainers, lecturers, facilitators, etc)
- can be adopted to various training needs (initial training, upskilling, higher education)

# Curriculum globALE – The Structure

## Key Elements of Curriculum globALE

### Thematic Modules

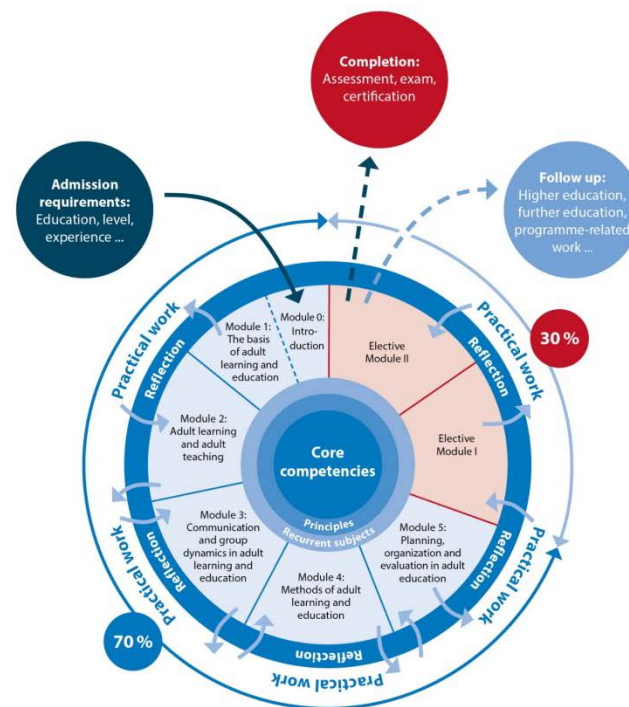
(instruction + individual study)

- 1 Introductory module
- 5 Core modules
- 1-3 Elective module(s)

### Accompanied Practical Work

- Application in real work settings
- Reflection on application experience
- Guidance/support from trainers

Figure 2. Curriculum globALE at a glance



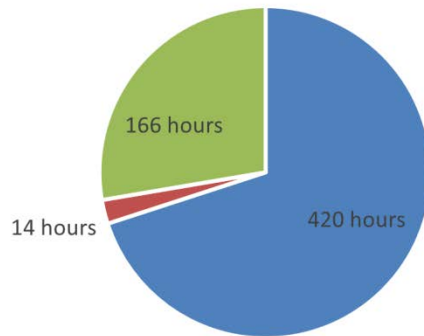
# Essential: Linking Theory and Practice



# CG total trainee workload: 600 hours

## Breakdown:

CG workload distribution by module type



■ Core Modules ■ Introductory Module ■ Elective Module(s)

CG workload distribution by activity type



■ Instruction hours ■ Individual Study ■ Practical application

Copyright XXX

# Curriculum globALE – The Content (Core Modules)

Module	Main Content	Workload
<b>M1: The basis of adult learning and education (ALE)</b>	<ul style="list-style-type: none"> <li>Understanding adult education in a national and global context, its main features and elements.</li> </ul>	30 instruction hours (≈ 5 days) + 24 hours of individual study
<b>M2: Adult learning and adult teaching</b>	<ul style="list-style-type: none"> <li>Learning theories and their use in ALE;</li> <li>motivation and barriers in ALE;</li> <li>the role of a trainer.</li> </ul>	30 instruction hours (≈ 5 days) + 24 hours of individual study
<b>M3: Communication and group dynamics in ALE</b>	<ul style="list-style-type: none"> <li>Principles, approaches and techniques of communication in ALE and of</li> <li>group dynamics of facilitating the learning process.</li> </ul>	24 instruction hours (≈ 4 days) + 20 hours of individual study
<b>M4: Methods of ALE</b>	<ul style="list-style-type: none"> <li>Understanding and applying appropriate ALE methods for the goal, topic, group and context.</li> </ul>	24 instruction hours (≈ 4 days) + 20 hours of individual study
<b>M5: Planning, organization and evaluation of ALE</b>	<ul style="list-style-type: none"> <li>Phases of the training cycle (needs assessment, curriculum development, planning and organization, evaluation).</li> </ul>	24 instruction hours (≈ 4 days) + 20 hours of individual study

## Elective Modules

- **Content:** optional topics (depending on local needs)
- **Total volume:** 166 hours ( $\approx$  30% of total CG volume)
  - instructional hours: 48
  - individual study: 42
  - practical application: 76
- **Number:** between 1-3 modules
- **Examples of topics:**

Gender equality, Education for Sustainable Development, Digital Learning, Global Citizenship Education, ..., ..., ...



# Thank you

