



WORLD
RESOURCES
INSTITUTE

USING GFW DATA AND TOOLS TO MONITOR AND MANAGE FOREST FIRES IN NEAR REAL-TIME

JAMES MACCARTHY

RN4: El Carmen-Puerto Suárez

RN4: El Carmen-Puerto Suárez

Puerto Suárez

Capitán de Aviación
Salvador Ogaya
G. International
Airport

Puerto Quijarro

Ladário

um
grau.e
meio
Corumbá
International
Airport



WORLD RESOURCES INSTITUTE

developing practical solutions that improve
people's lives and protect nature



GLOBAL
FOREST
WATCH



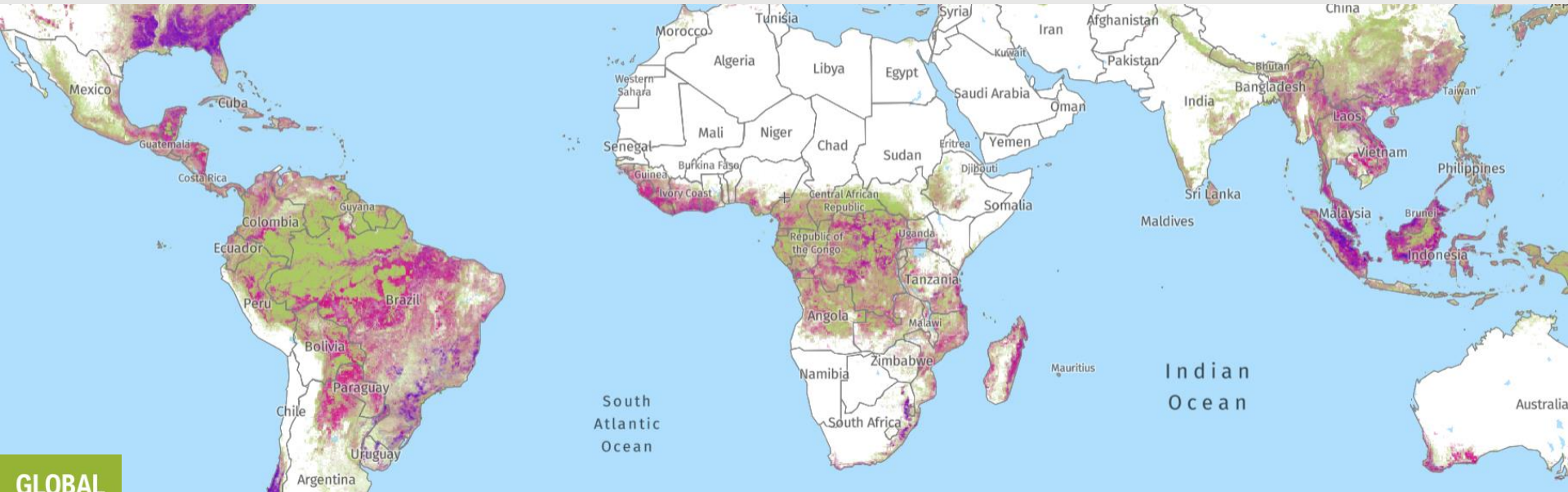
GLOBAL
FOREST
WATCH

globalforestwatch.org

 WORLD RESOURCES INSTITUTE

GLOBAL FOREST WATCH

an online platform that provides data and tools for monitoring forests



WEBINAR OBJECTIVE

aim to increase knowledge on tools and the effects of climate change on fire management



+41%

increase in area
burned by
wildfires in
average
Mediterranean
summer.

+1.5°C

+62%

increase in area
burned by
wildfires in
average
Mediterranean
summer.

+2°C

+97%

increase in area
burned by
wildfires in
average
Mediterranean
summer.

+3°C

1. Rising temperatures create drier conditions in forests, milder winters that lead to lower snowpack, higher pest populations, and longer fire seasons.



2. Larger burned area from fires result from more dried out and dead vegetation, which acts as a tinderbox of fuel that is easily sparked by lightning or people.



3. Emissions from fires increase as they burn over expanded areas, longer, and more frequently.



4. More carbon in the atmosphere accelerates warming and leads to temperature rise.



GLOBAL FOREST WATCH



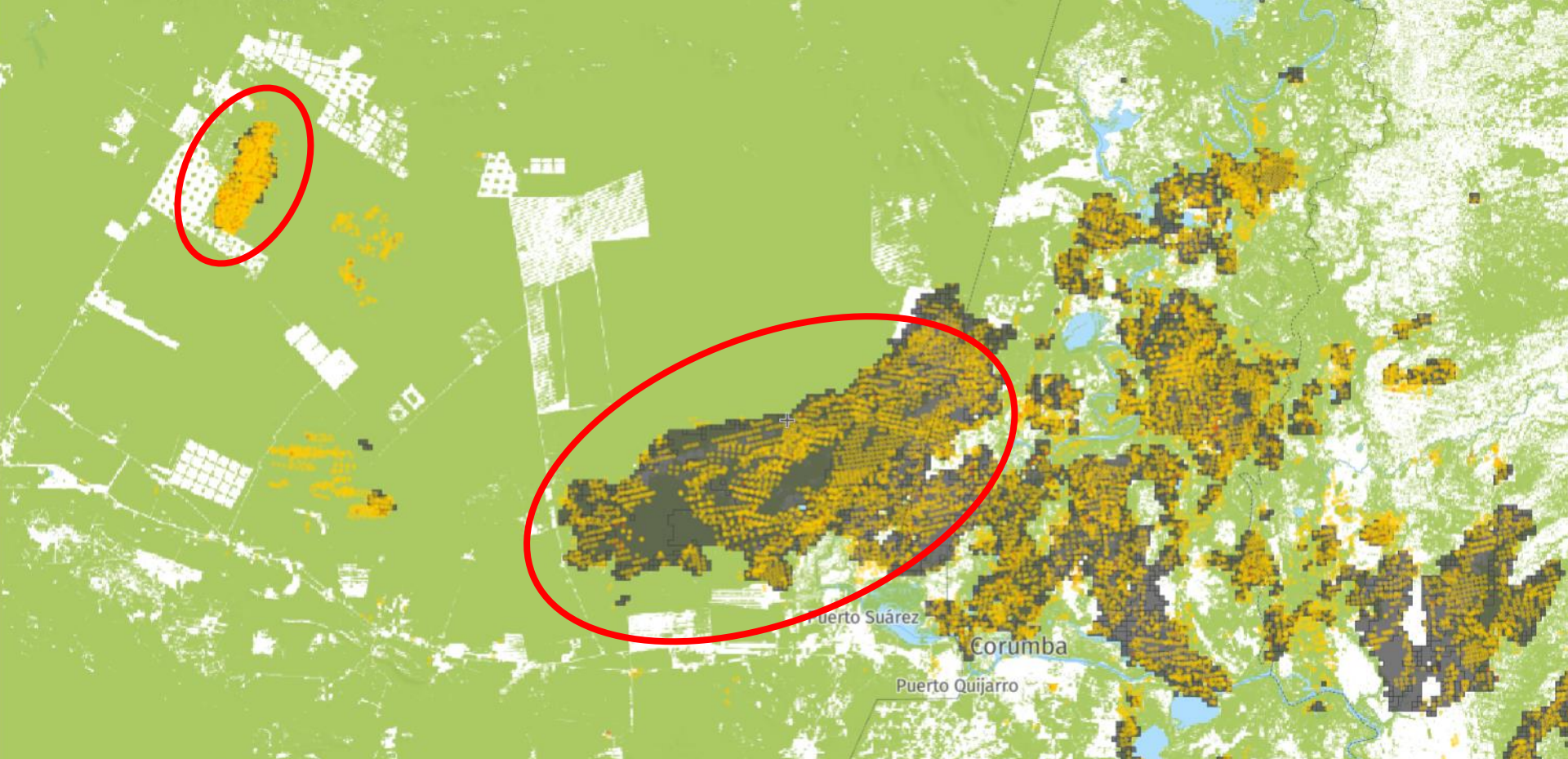
Evaluate damage and identify high-priority areas from previous fire seasons



Identify unusual fire activity in near real-time



Track changes in fire activity and compare years



INTERACTIVE MAP

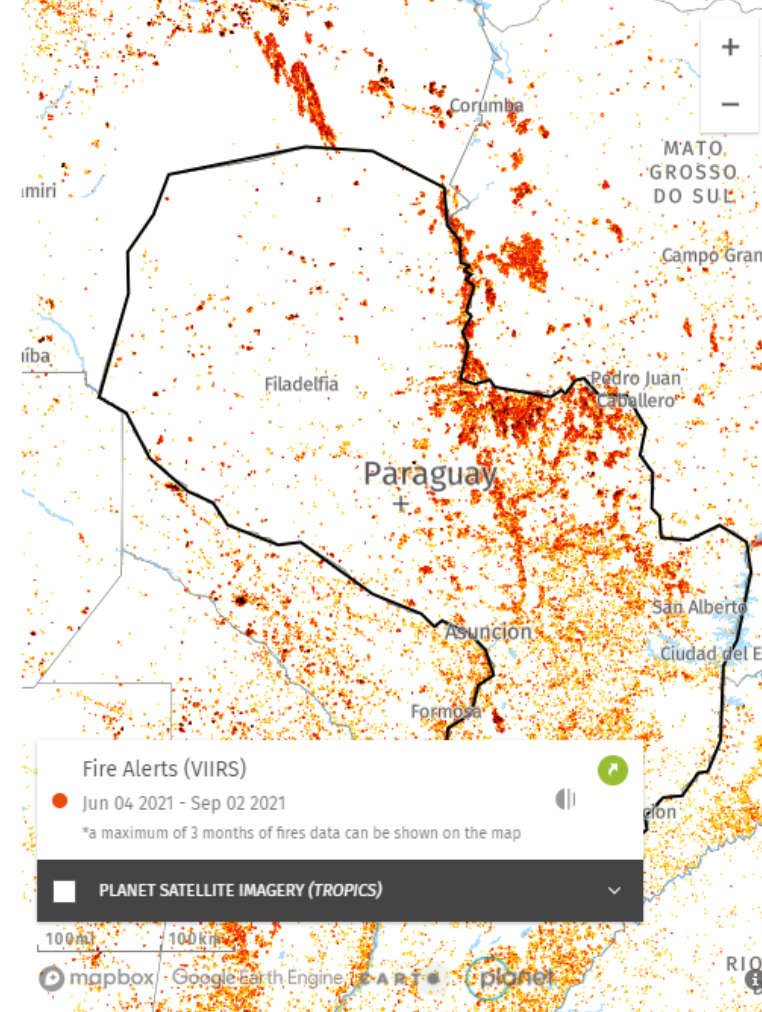
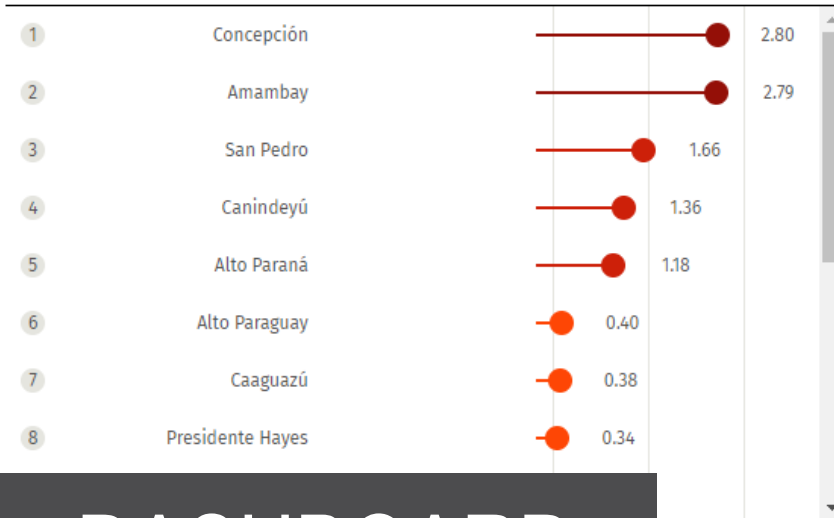
REGIONS WITH THE MOST FIRE ALERTS IN PARAGUAY



In the last **4 weeks** in **Paraguay**, the region with the most **significant** number of fire alerts was **Concepción**, with **848** fire alerts. This represents **23%** of all alerts detected in **Paraguay** and is **unusually high** compared to the number of fires in the same period going back to **2012**.

● Unusually high ● High ● Normal ● Low ● Unusually low

Significance

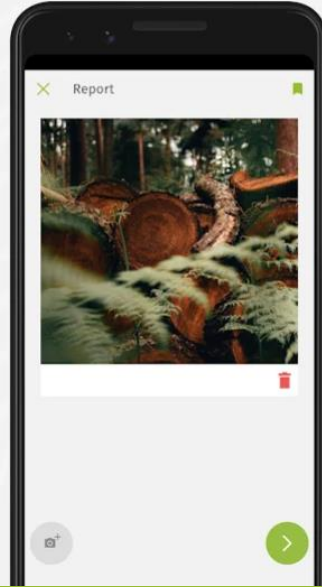




View Deforestation Alerts

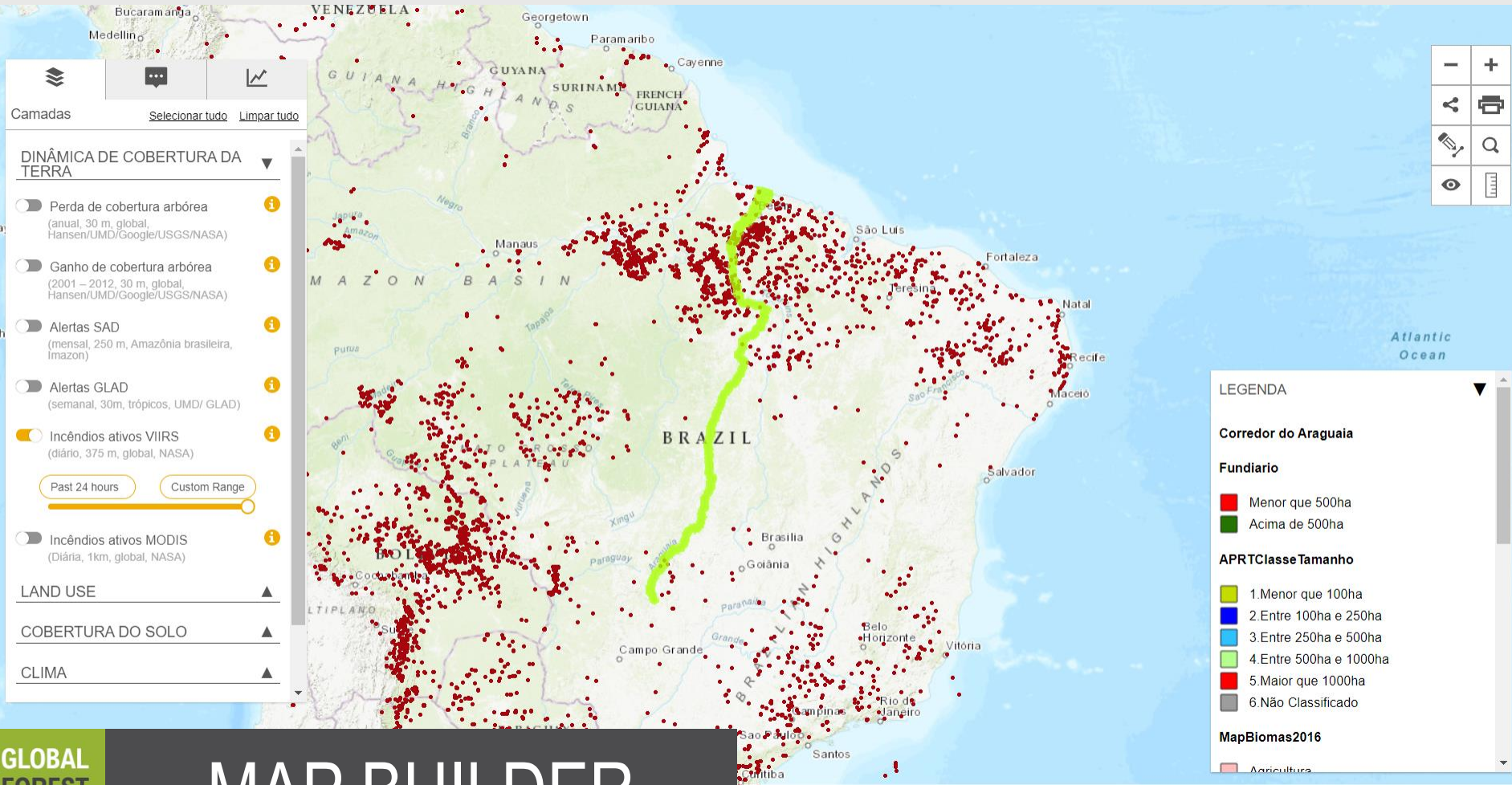


Create Reports



Customise Map Layers





Camadas [Selecionar tudo](#) [Limpar tudo](#)

DINÂMICA DE COBERTURA DA TERRA

- Perda de cobertura arbórea
(anual, 30 m, global, Hansen/UMD/Google/USGS/NASA)
- Ganho de cobertura arbórea
(2001 – 2012, 30 m, global, Hansen/UMD/Google/USGS/NASA)
- Alertas SAD
(mensal, 250 m, Amazônia brasileira, Imazon)
- Alertas GLAD
(semanal, 30m, trópicos, UMD/ GLAD)
- Incêndios ativos VIIRS
(diário, 375 m, global, NASA)

Past 24 hours Custom Range

- Incêndios ativos MODIS
(Diária, 1km, global, NASA)

LAND USE

COBERTURA DO SOLO

CLIMA

Map navigation controls:

- Zoom in (+) / Zoom out (-)
- Share / Print
- Measure / Search
- Full Screen / Scale

LEGENDA

Corredor do Araguaia

Fundiário

- Menor que 500ha
- Acima de 500ha

APRTClasse Tamanho

- Menor que 100ha
- Entre 100ha e 250ha
- Entre 250ha e 500ha
- Entre 500ha e 1000ha
- Maior que 1000ha
- Não Classificado

MapBiomias2016

- Agricultura



SUDAMERIS *Todo un banco.*

Paraguayan bank uses GFW to
save a client's farm from burning

GLOBAL
FOREST
WATCH

Photo: Pixnio

THANK YOU!

CONTACT INFO:

Fires – James MacCarthy
(james.maccarthy@wri.org)

Latin America – Luiz Calado
(luiz.calado@wri.org)

Webinars – Jessica Webb
(jessica.webb@wri.org)

[5-MINUTE DEMO]