

CE for healthy and resilient cities

Mr. Nam-seok Ko, Mayor of Yeonsu-Gu

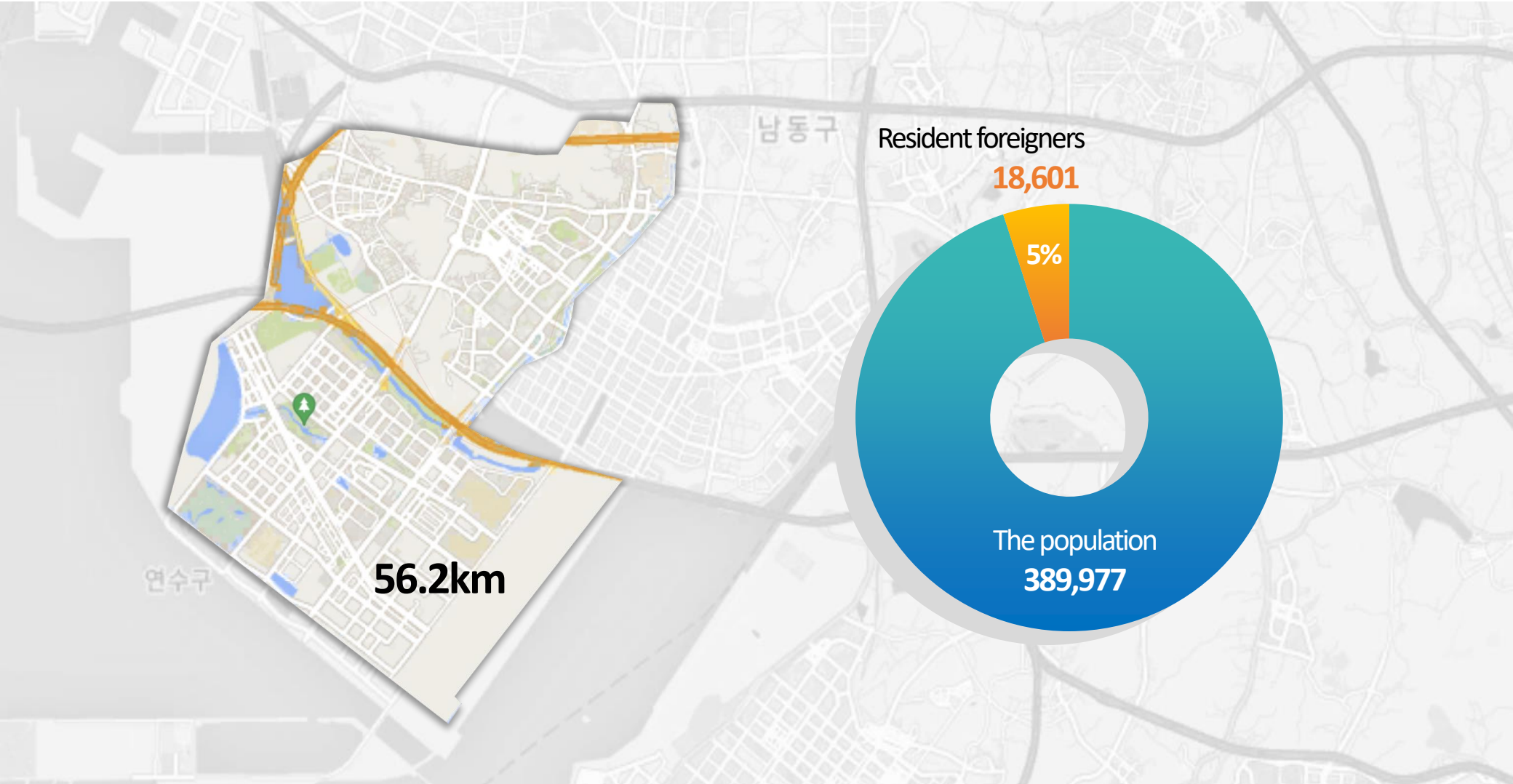


Contents

- Chapter 01 Introduction of Yeosu
- Chapter 02 The pandemic and Us
- Chapter 03 Response To The pandemic
- Chapter 04 CE Practices for health in Yeosu
- Chapter 05 Lifelong Learning for healthy cities
- Chapter 06 CE for healthy and resilient cities

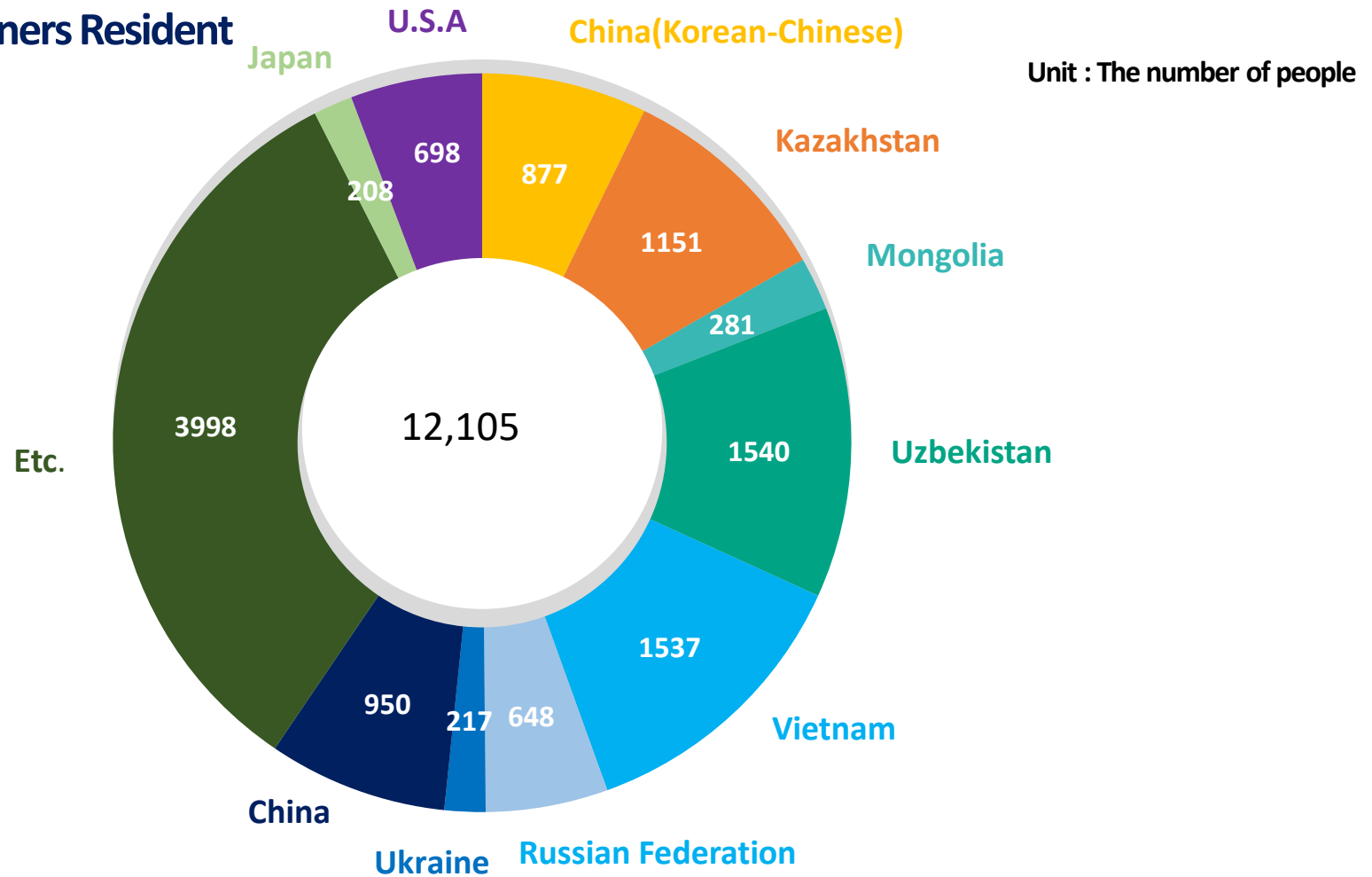
Chapter 01 Introduction of Yeonsu

2021.9.30.



Chapter 01 Introduction of Yeonsu

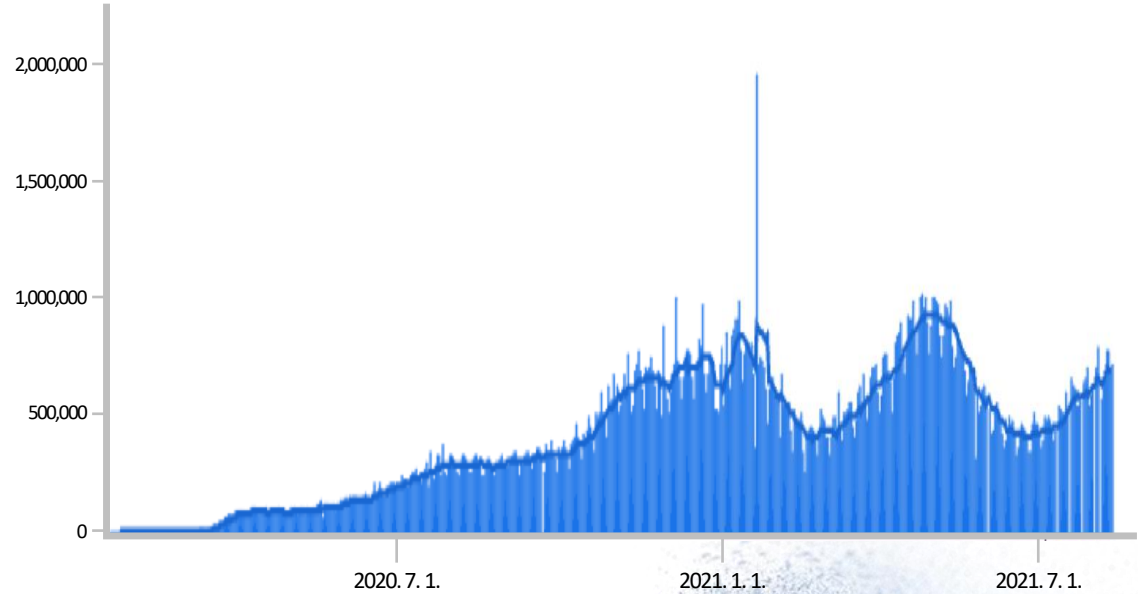
Nationalities of Foreigners Resident



The number of Koryo-Saram : **6,496 (54%)**

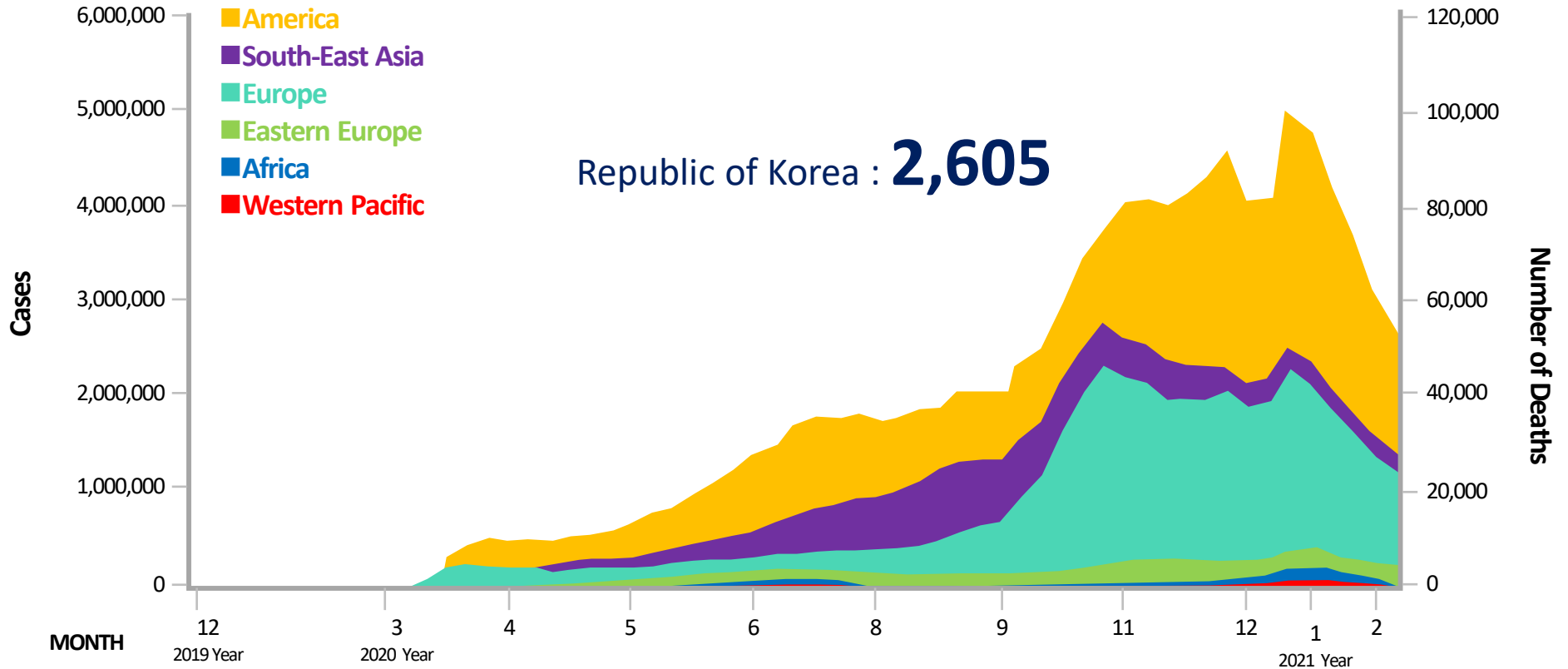
Chapter 02 The pandemic and Us

Number of confirmed cases in the world

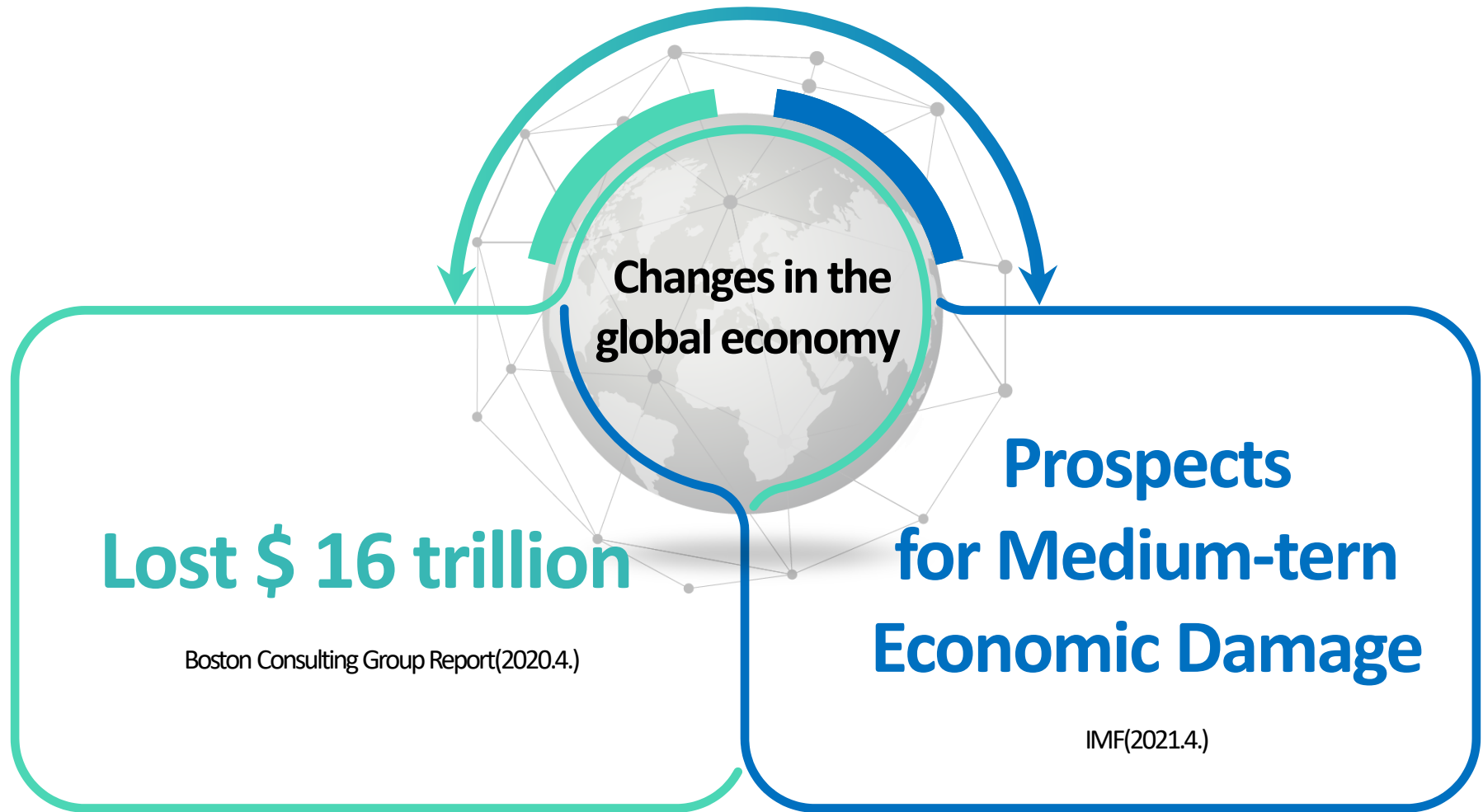


Chapter 02 The pandemic and Us

The number of deaths by Region



Chapter 02 The pandemic and Us



Chapter 03 Response to the pandemic



- **Social Distancing, Mask Wearing**
- **Vaccination Guidance**
- **Covid-19 Screening Clinics**

Chapter 03 Response to the Pandemic



Citizen's
active
participation

To broadly benefit all humanity



1

Building COVID-19 Information Delivery Platform



Yeosu 연수구 코로나19 현황 (3.4. 9시 기준)

확진자(전국/인천시/연수구) **4,812/9/2** 퇴원(전국) **34명** 사망(전국) **28명**

확진자이동Map 선별진료소현황 신천지 관련시설

인천 코로나 확진자 이동 현황

- 남동구보건소(선별진료) - 2월27일 - 연수구1
- 자생한방병원 - 2월24일 오전 - 연수구1
- 송도근무지 - 2월19일~21일 - 연수구1
- 자택인근마켓(위치정보없음) - 2월26일 21시경 - 서구1

인천시 코로나-19 실시간 현황

▶ 인천광역시 코로나19 실시간 대응 현황 바로가기

2020.3.4. 9시
(연수구 코로나19 대응 상황)
- 연수구 신천지 신도 전체검사 진행중

(4.28.) Yeosu 연수구 코로나-19 현황 지도

확진자(전국/인천/연수구) 120,673(↑ 775)/5,626(↑ 20)/762 총치자(전국) 110,249명 사망(전국) 1,821명

확진자 동선 선별진료소현황

▼▼▼ 인천광역시 확진자 동선 ▼▼▼

중앙방역대책본부 확진환자의 이동경로 등 정보공개 지침 (20.10.7)에 따라 감염병 예방에 필요한 정보에 한해 공개합니다.

- 공개대상 : 감염병 환자
- 공개기간 : 확진환자가 마지막 접촉자와 접촉한 날로부터 14일 경과시
- 공개범위
 - (개인정보) 성별, 연령, 국적, 거주지(읍면동이하)

본인 활동 동선이 위의 **확진자 동선과 겹치는 경우** 인근 선별진료소를 방문하여 검사 받으시길 바랍니다

바로가기 메뉴

생활지도 해택플러스 안심식당 읍민존

2

Disaster-resistant Village Project



3

Immigrant Support Initiative



Social Integration project
(forums, resident's associations,
language programs)



**Mobile Covid-19
Screening centers
and
Vaccination centers**



**Volunteering to interpret
for Covid-19 test
and health education**

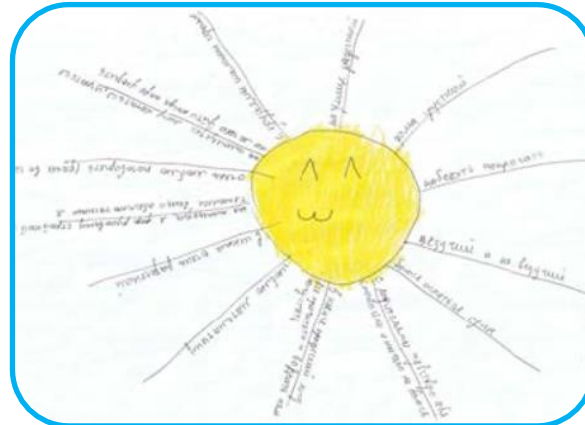


3

Immigrant Support Initiative



**Establishing
the Urban Regeneration
On-site Support center**
(Providing spaces and
education programs)



Masks and Donation



**Psychological counseling
and Art therapy**



Chapter 04 CE Practices for health in Yeonsu





Research on benefits of lifelong learning(ROK)



Purpose of the research

- Measuring the level of change in personal and social participation as a result of lifelong learning participation.
- To prove the benefit of lifelong learning so that cities can use it as a basis for securing the necessary funding for a learning city.

Number of respondents: 10,111 (ROK)

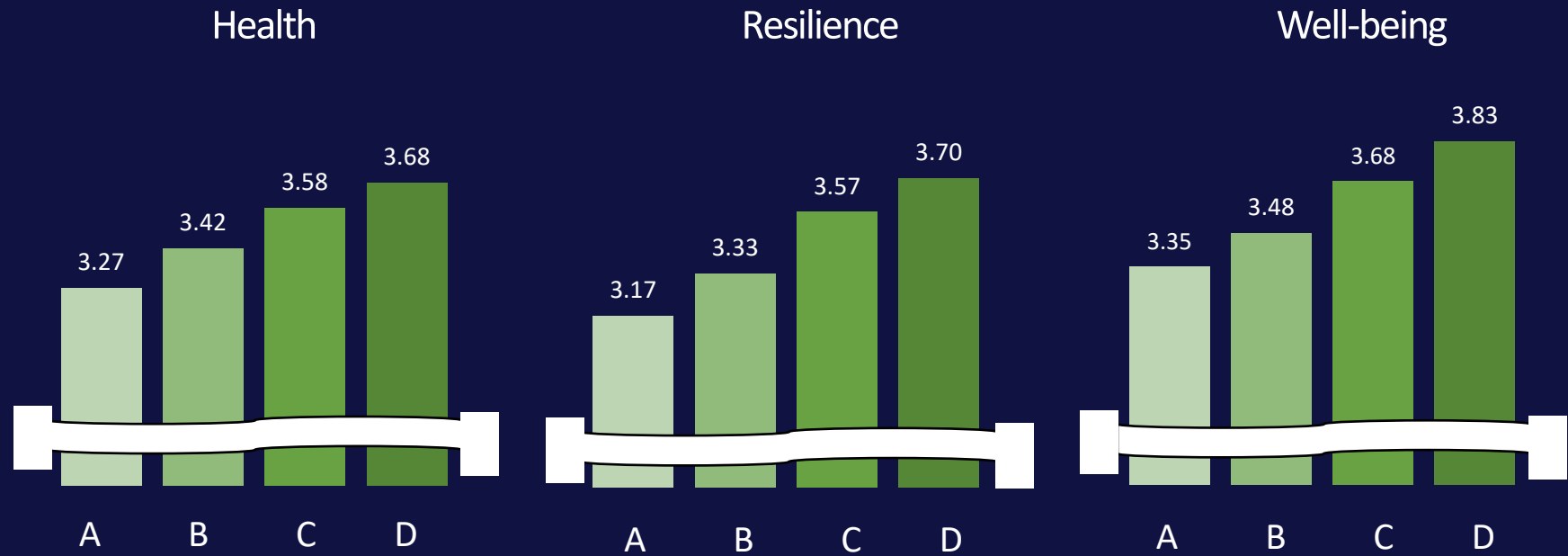
Period: 2021. 07~2021. 10

Method

- Indicator development: literature study, expert meetings, Delphi for field practitioners, and opinions from mayors of local governments
- Survey method: online and offline survey

Chapter 05 Lifelong Learning for healthy cities

- The longer the learning participation time, the higher Health, Resilience, and Well-being score.
- Health and Resilience mediate lifelong learning and Well-being.



<Legend>

A: Non, B: Lower Group, C: Middle Group, D: Upper Group

Total: n=10,077 (M: 6,180, F: 3,927)

(* 5 Likert scale)

Chapter 06 CE for healthy and resilient cities



“The driving force for healthy cities.”