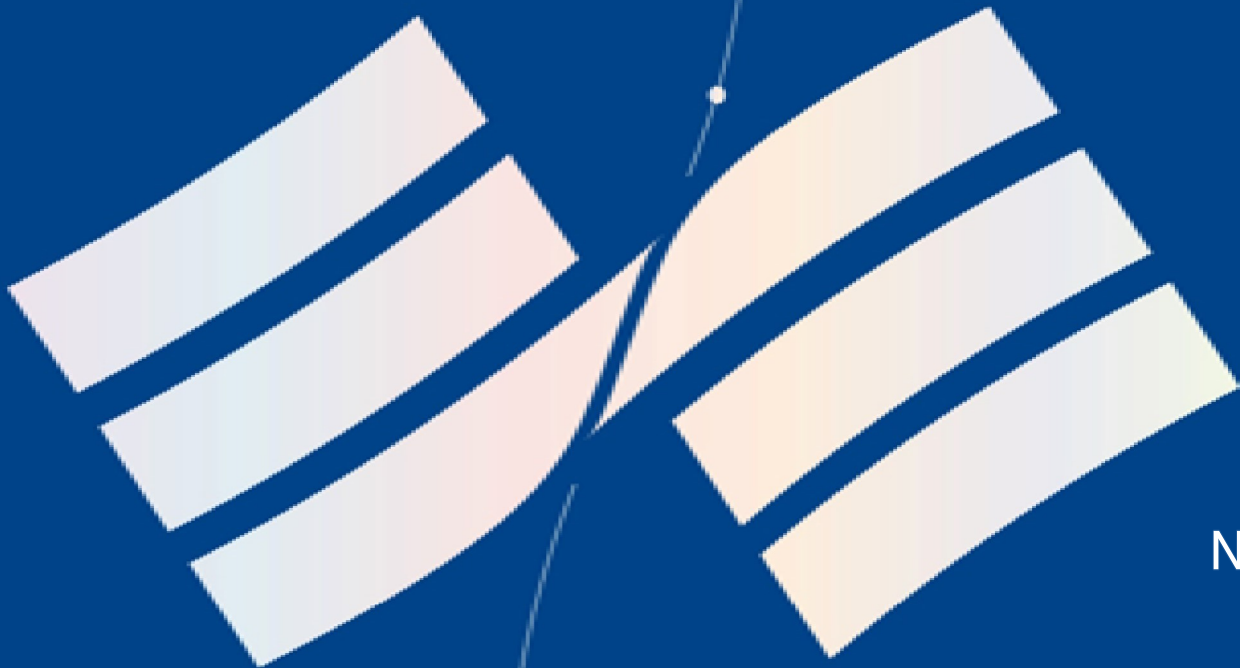


# Lifelong Learning in Korea

A Brief Overview



20 Jan, 2021  
National Institute for Lifelong Education  
Republic of Korea

# Policy Development

Korea's pathway towards building a learning society for all

1945 - 1981

1st

## Nation Re-building

**1962** Comprehensive plan for Adult Education

**1980** Lifelong Learning becomes a 'State responsibility' in Constitution

1982 - 1999

2nd

## Socioeconomic Development

**1990** BDES

**1996** 1st National Basic Plan for Lifelong Education

**1997** 1st Lifelong Education White Paper

**1998** Academic Credit Bank

2000 - 2009

3rd

## Towards a Learning Society

**2001** Lifelong Learning Cities

**2002** 2nd National Basic Plan

**2006** Adult Literacy Education

**2007** Through Revision of Lifelong Education Act

**2008** NILE established

2010 - Current

4th

## Digital Transformation

**2010** Lifelong Learning Accounts

**2014** National Lifelong Learning Information Portal

**2015** K-MOOC

**2017** MatchUp

**2018** Lifelong Education Vouchers

# Systematic approach to Lifelong Learning

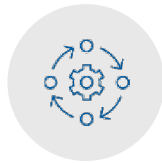
## Legal Grounds

### The Constitution

### Lifelong Education Act

### Framework Act on Education

## National Plans and Regulations



### National Basic Plan for the Promotion of Lifelong Education

- A comprehensive five-year plan
- First established in 2002, currently at its fourth version (2018 - 2022)



### Laws and Regulations on Lifelong Learning

- Act on Recognition of Credits, etc
- Act on the Acquisition of Academic Degrees through Self-Education

## Nationwide Implementation System

Ministry of Education

National Institute for Lifelong Education

Lifelong Education Promotion Committee

Metropolitan and Provincial Governments and Offices of Education

Metropolitan and Provincial Institutes for Lifelong Education

Metropolitan and Provincial Lifelong Education Committees

Municipal Governments and Offices of Education

Lifelong Learning Centres in Municipalities

Municipal Lifelong Education Committees

## Major Schemes and Projects

### Policy Schemes

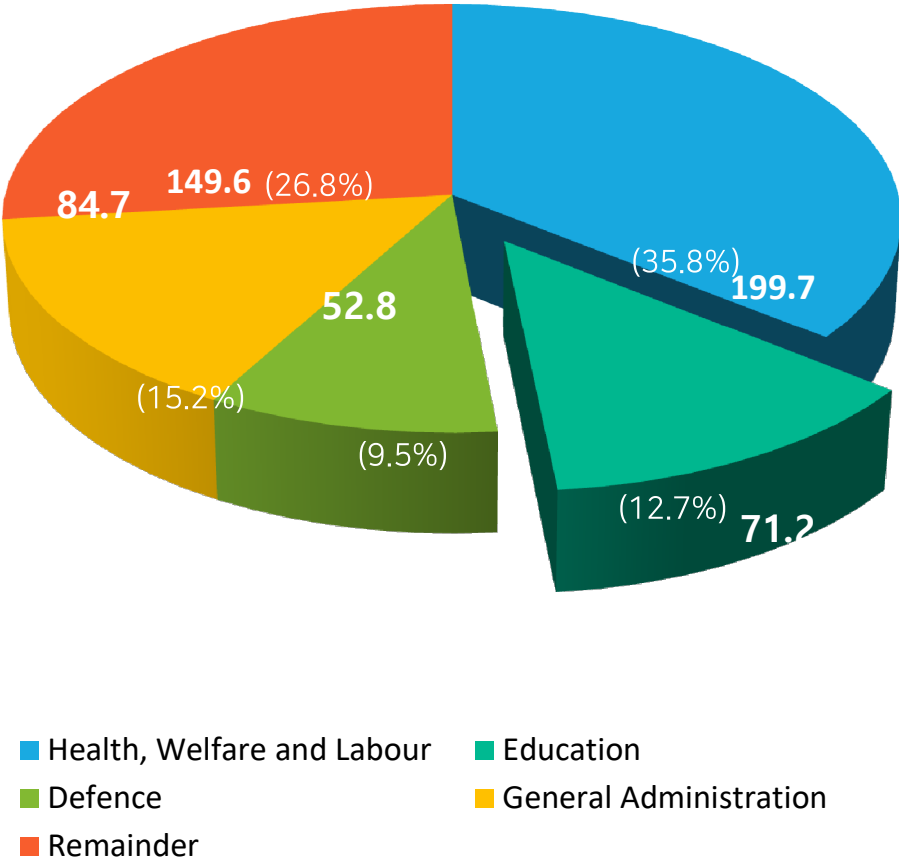
- Academic Credit Bank
- Bachelor's Degree Examination for Self-Education
- Lifelong Education Vouchers
- Qualification System for Lifelong Learning Professionals
- Lifelong Learning Accounts

### Projects

- Adult Literacy Education
- Nationwide lifelong learning implementation system
- K-MOOC and MatchUp
- National Lifelong Learning Information Portal
- Lifelong Learning Universities

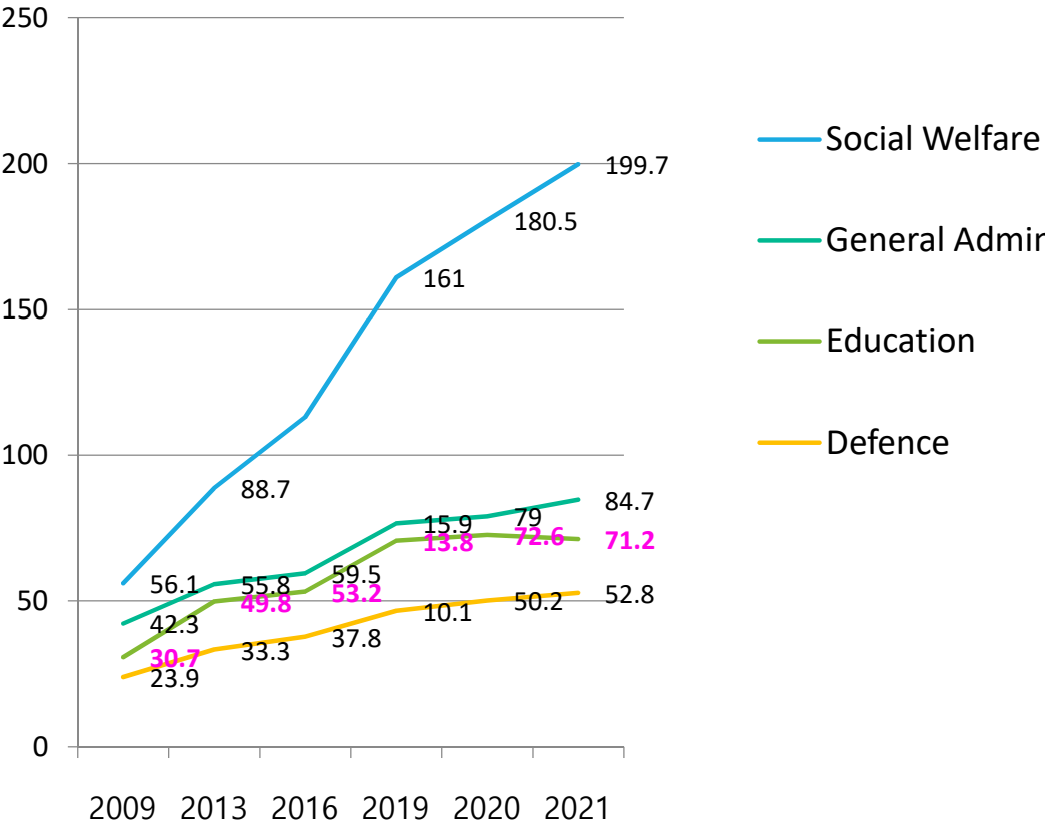
# Financing Lifelong Learning

## 2021 National Budget



## Changes in National Budget by Sector

(unit: 100 million KRW)



Source: Ministry of Education, Republic of Korea

## Financing Lifelong Learning

(unit: 100 million KRW, ≙ 91,000 USD)

### Education Budget by Sector (2015 - 2019)

	2015	2016	2017	2018	2019	Annual Growth Rate
ECE, Primary and Secondary Education	414,568	430,588	471,494	537,736	598,011	11.1%
Higher Education	107,450	93,593	94,584	95,617	99,537	-1.8%
Lifelong Learning and Vocational Education	6,150 (1.16%)	6,577 (1.24%)	6,935 (1.20%)	6,707 (1.04%)	7,420 (1.05%)	5.2%
General Education	1,020	1,101	1,110	1,240	1,270	6.1%
TOTAL	529,188	531,859	574,123	641,300	706,238	8.4%

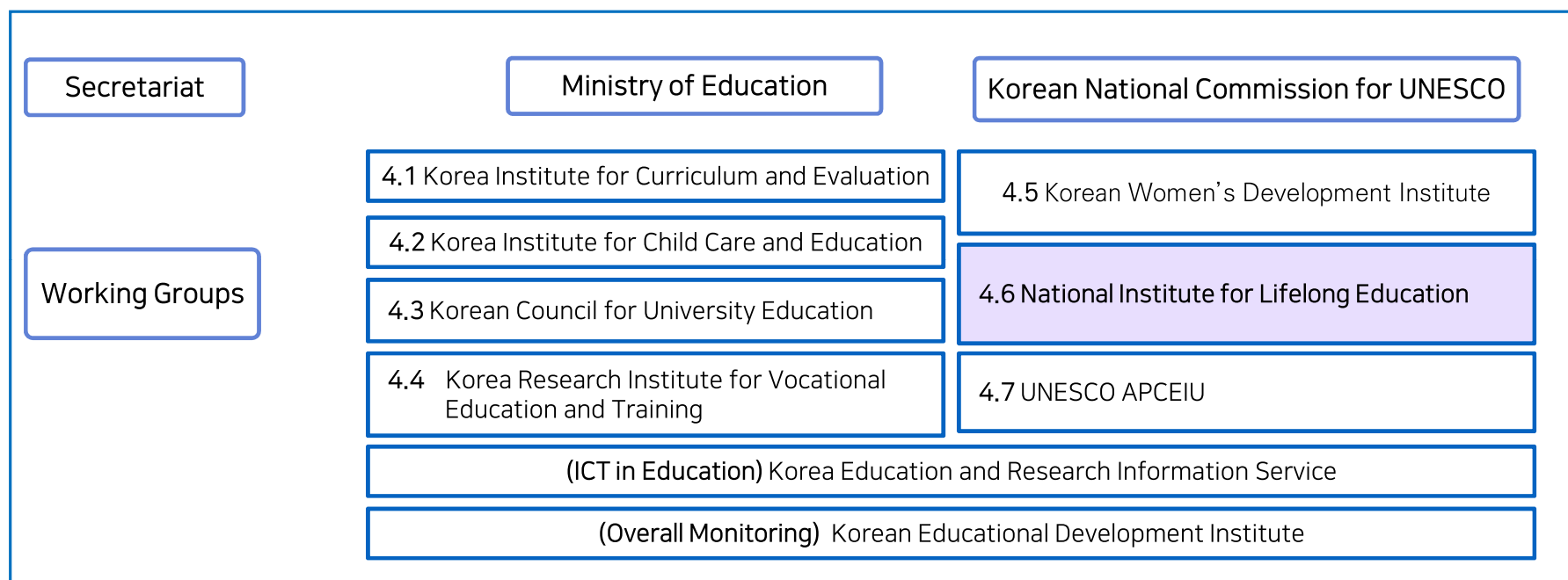
Source: Ministry of Education, Republic of Korea

## SDG 4.6 Monitoring

### Background

SDG 4 - Education 2030 Consultive Council in operation since 2017, designated by MOE

### Institutions



### Major Activities

- Monitoring national progress for SDG 4 (Education) indicators
- Drafting of National Report on SDG 4 implementation
- Recommendations for national policy alignments
- Public Advocacy for Sustainable Development and SDGs

## Achievements and Challenges

---

### Nationwide System in Place → Quality Improvement Needed

Nationwide lifelong learning governance and policy implementation system firmly established, yet improvements are needed in many areas, such as enhancing program quality, wider provision and participation.

#### ACHIEVEMENTS

---

Nationwide policy  
implementation system



Policy schemes and projects for  
disadvantaged groups



Increasing Participation Rate



#### CHALLENGES

---

Adapting to Socioeconomic  
Changes



Wider participation from  
disadvantaged groups



Constructing an ecosystem  
for online lifelong learning

Thank you for Listening  
들어주셔서 감사합니다.

ご清聴ありがとうございました。

感谢倾听

баярлалаа