

National Institute
for Lifelong Education

BETTER DATA FOR MORE EFFICIENT POLICIES : THE KOREAN CASE

Min-Seon Park

Programme Specialist

National Institute for Lifelong Education, Republic of Korea

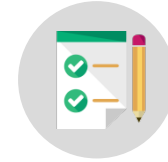
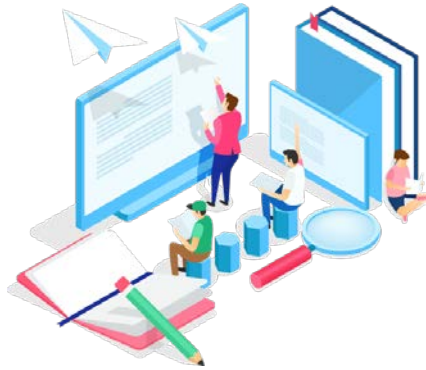


국가평생교육진흥원
National Institute for Lifelong Education

“

Basic skills necessary
for daily life

”



LITERACY EDUCATION

a structured education programmes aimed to furnish one with socially & culturally required basic life skills necessary for leading a daily life, including but not limited to literacy attainment.

NATIONAL SURVEY ON THE STATUS OF ADULT LITERACY

ADULT LITERACY COMPETENCY SURVEY

by the National Institute for Lifelong Education (NILE)

Time of survey

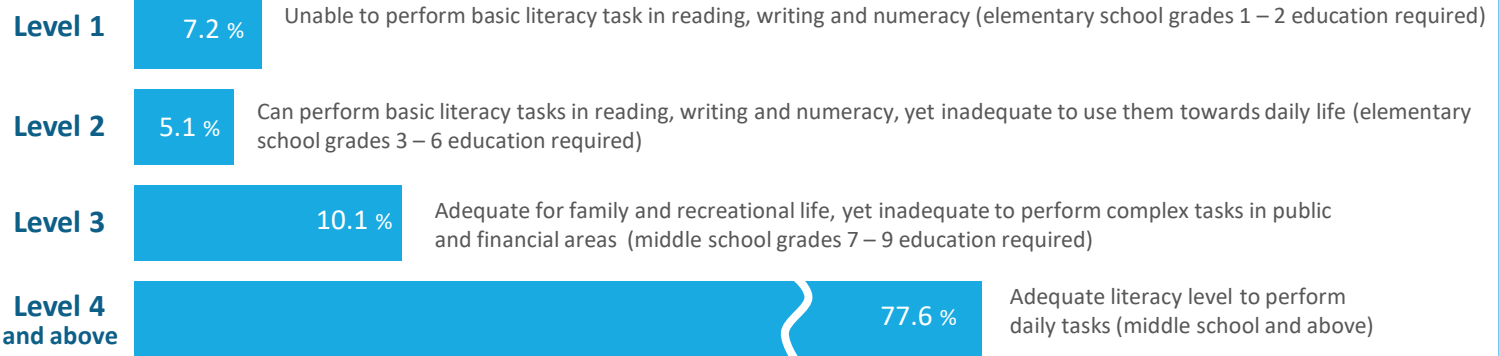
Every 3 years (Conducted in 2014, 2017 and 2020)

Survey target

Adults ages 18 and older (4,004 participants for the 2017 survey)

- Assessing adult literacy competency level by gender, age, educational attainment, monthly household income, and region.
- Literacy areas are classified into prose, quantitative and document.
- Literacy levels are classified into 4 stages.

Current Literacy Status for Adults (ages 18 and above)



Survey results

- Prepared a mechanism to identify the status of lifelong learning through educational institutions, as well as the learners.
- However, not reached an adequate level of formulating thoughts and practices where the core indicators used to verify the degree of lifelong education are developed and the index is obtained through such indicators.

NATIONAL SURVEY ON THE STATUS OF ADULT LITERACY

Legal Basis

Article 19 (4)

subparagraph 1 of *the Lifelong Education Act* specifies the support and inspection for the promotion of lifelong education as one of the duties for the National Institute for Lifelong Education.

Article 73-2 (1)

subparagraph 3 of the Enforcement Decree of *the Lifelong Education Act* sets out the “factual surveys such as the statistical survey on the literacy education and the status of institutions related to literacy education” as one of the duties of the National Center for Adult Literacy Education.

THE LITERACY EDUCATION INSTITUTION SURVEY

by the National Institute for Lifelong Education (NILE)

Time of survey **Every year**

Survey target **Literacy education institutions (855 institutions participated in 2018)**



Institutional Status

number of institutions by region / type of establishment, type of management and building ownership, hourly pay for teachers, expenses for volunteer activities, income and spending details, available equipment, and number of partner institutions.



Program status

program levels and the number of programs for each level, number of weekly classes and hours of each class, time slots, hours of education, monthly tuition, number of enrollees, status on the use of teaching and learning materials, program promotion and student management methods.



Learner status

number of learners by region, type of establishment, age and educational attainment, number of foreign migrant workers, female migrants, and North Korean refugees.



Requirements for support and institutional improvement

ADULT LITERACY EDUCATION IN KOREA

MAJOR POLICY AGENDA IN NATIONAL EDUCATION POLICY

- Illiteracy rate still quite high among traditionally vulnerable groups such as **women and elderly**
- Rise of **new groups in need of literacy education** support : influx of migrant workers and foreign spouses (marriage migrants)



T H A N K Y O U

BETTER DATA FOR MORE EFFICIENT POLICIES
THE KOREAN CASE

