

BASELINE SURVEY 2021

WHO IS THE HUB?

Eritrea*, Ethiopia, Gambia*, Ghana, Kenya*, Lesotho*, Liberia*, Malawi*, Mozambique, Nigeria*, Rwanda*, Sierra Leone*, Somalia*, South Sudan*, Tanzania*, Uganda*, Zambia*, Zimbabwe*

*Countries that have participated in KIX baseline surveys



WHAT WAS THE PURPOSE OF THE BASELINE SURVEY?

To create an initial baseline for the KIX Africa 19 Hub's activities to establish the current status of knowledge creation and exchange and measure progress

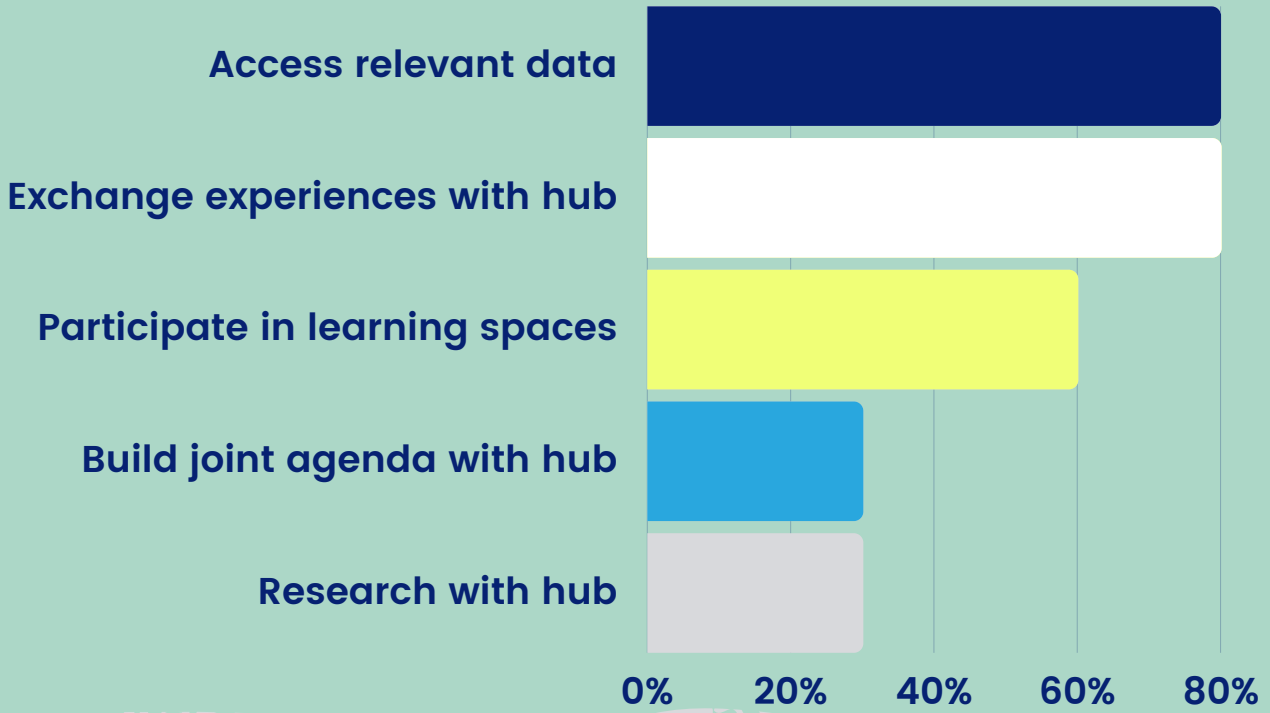
HOW DID WE COLLECT INFORMATION?

Mixed research approach with online surveys. Disseminated downloadable copy to accommodate unreliable internet connectivity.

Data collected using primary and secondary sources from April 22 to May 28, 2021.



WHAT DO MEMBER STATES WANT TO DO IN THE HUB?

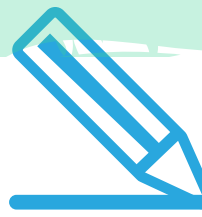
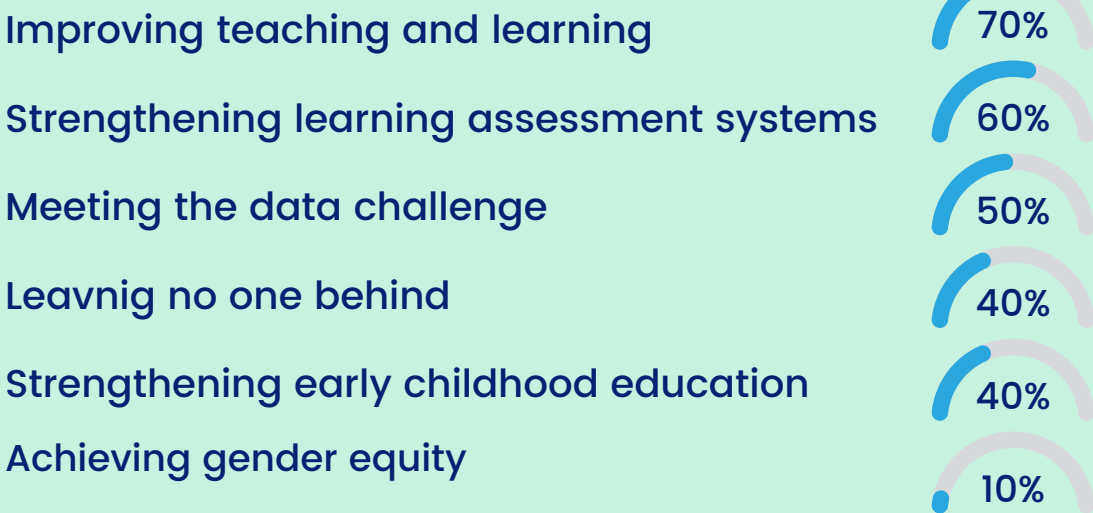


WHO INFORMS EDUCATIONAL POLICYMAKING AND IN WHAT PLATFORMS?

Ministries
Local education groups
NGOs
Teachers
Education experts
Private education institutions
UNICEF
UNESCO
European Union

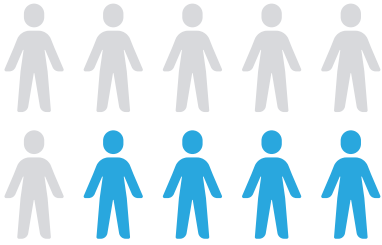
Seminars
Working groups
Conferences

WHAT EXPERIENCES DO MEMBER STATES WANT TO SHARE WITH THE HUB?

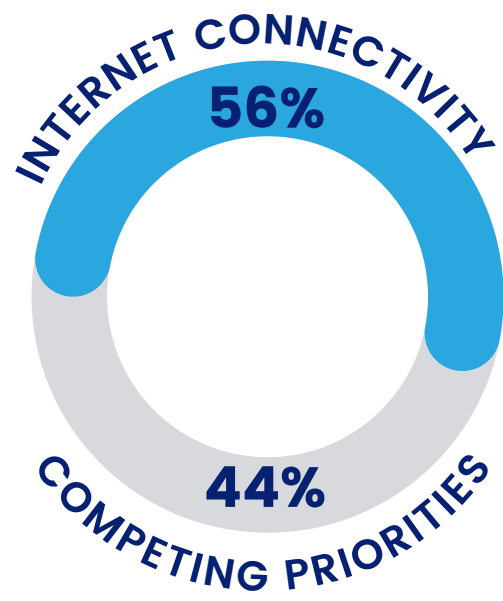


WHAT ARE THE BARRIERS TO HUB PARTICIPATION FOR COUNTRY MEMBERS?

HOW OFTEN SHOULD THE HUB BE IN TOUCH?



60% of respondents prefer to be informed of KIX activities at least once every two weeks or less while 40% of respondents prefer to be informed of KIX activities at least once a month



WHAT ARE THE FACTORS THAT IMPACT KNOWLEDGE UPTAKE?



- Political goodwill
- Development partner support
- Collaboration amongst all stakeholders
- Clear strategic direction
- Private-public partnerships
- Increased budgetary allocation

- Lack of resources to seek new knowledge
- Low utilization of existing knowledge
- Non-prioritization of education sector
- Brain-drain & funding constraints
- Poor ICT infrastructure
- Changing leadership



ABOUT THE HUB

The KIX Africa 19 hub facilitates cross-country knowledge exchange and mobilization, learning, synthesis, and collaboration among national education stakeholders in 18 Global Partnership for Education partner countries in eastern, southern, and western Africa. The hub functions as a regional forum within KIX. The consortium is composed of UNESCO's International Institute for Capacity Building in Africa, UNICEF Eastern and Southern Africa and the African Union.

To learn more about the hub and learn how you can get involved, contact: kix.iicba@unesco.org

iicba.unesco.org/kix
gpekix.org/regional-hub/kix-africa-19
[@kixafrika19hub](https://www.facebook.com/kixafrika19hub)