



“Technology used to support
Teachers and Teaching in the 21st
Century Education System”.





“Education is not the filling of a pail, but the lighting of a fire.”

W. B. Yeats



Background and Context

- CEO and founder of Nisai Group – A technology and learning practitioner
 - Making use of technology to aid in the delivery of education to students
 - Making use of technology to develop and support teachers
 - A focus on making education affordable and accessible to all
 - A focus on delivering learners who have developed both socially and academically
 - A focus on providing opportunities and life long opportunities
-



How can technology support
teachers and teaching?





The main challenges in the education system

- The fact that, 'every child has the right to an education', is not being honoured
- Schools focus on academics rather than core competencies

Why?

- Lack of inclusivity
 - Learners with Special Education Needs are not being catered for
 - A focus on those who are able to achieve performance targets
 - A lack of understanding of the impact of improving soft skills
-

Challenges

- Inconsistent quality of teaching
 - Staff shortages and challenges with recruiting
 - Education focused on academic achievement rather than development of skills
 - Changing the mind-set of education professionals – regionally, nationally and internationally
 - Role of teacher and /or coach
 - Use of multiple intelligence
 - Teachers as fountain of all knowledge to being a facilitator
 - Understanding of tacit knowledge of the learners by using open questioning
 - Improve the quality of the labour force across all professionals in education, not just teachers
 - Being able to replicate the skills and expectations of our learners to our teachers
-

How technology supports?

- Allows the sharing of knowledge and best practice over wide geographical areas
 - Provides a cost effective model to deliver Continual Professional Development programmes
 - Develops teachers in specific knowledge areas e.g. SEN, lesson delivery, quality of teaching
 - Opens their minds to new ideas including the inclusion of the 4 C's
 - Provides additional resource to improve learner engagement and subsequent outcomes
 - Provides empowerment
 - Helps to meet the criteria of improving the Quality of Teaching in a global economy
 - Develops the skills to 'Ensure inclusive and equitable quality education and promote lifelong learning opportunities for all'
-



21st Century Competencies

- The 4 C's

Created by the Partnership for 21st Century Learning, the 4 Cs define and illustrate the skills and knowledge students need to succeed in work and life. If teachers demonstrate these competencies, our students will value them and adopt them.

- Critical Thinking
 - Communication
 - Collaboration
 - Creativity
-



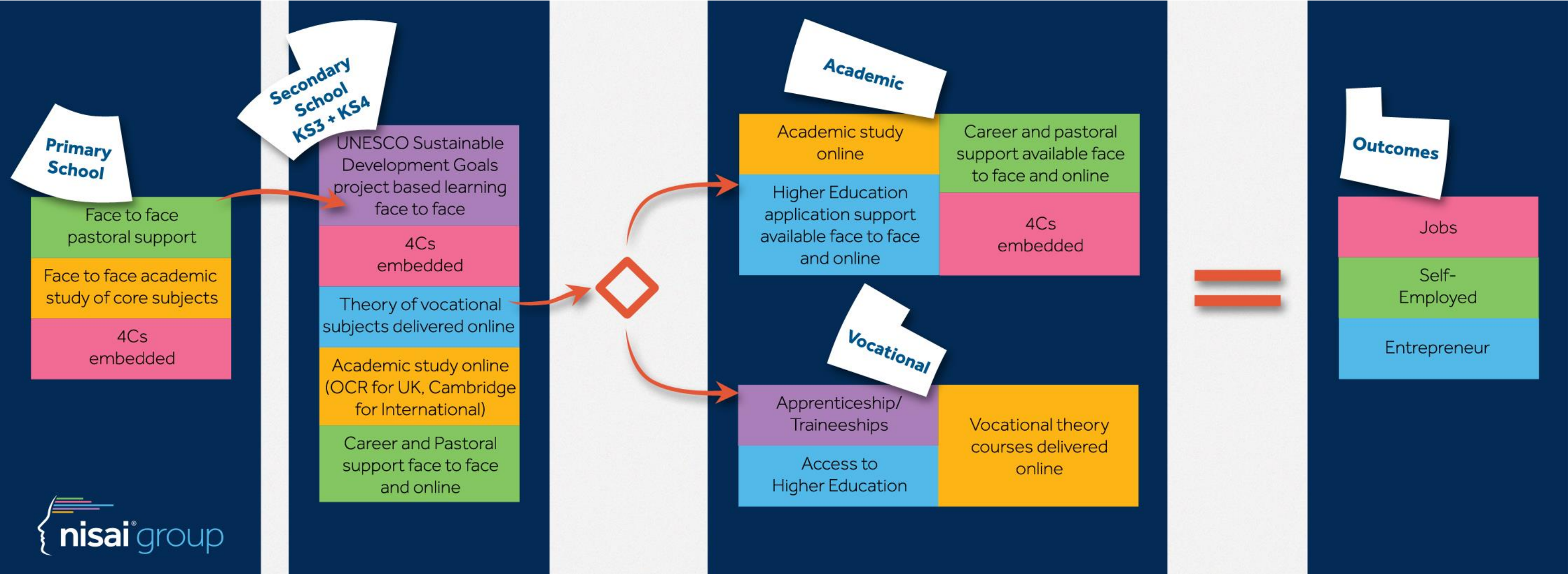
21st Century Pedagogical Approach

Adapting the way we educate to prepare today's students for tomorrow's future.

Based on three pedagogical principles:

- **Personalisation** - Learning shouldn't be 'one size fits all'. Driven by the learner but still focuses on meeting targets
 - **Participation** – Encourages project based learning, where students lead and actively engage
 - **Productivity** – Continual professional development for teachers and encouraging life-long learning
-

Blended approach to 21st Century Learning





Case Studies and putting it in to practice



Nisai Delivery Model

Delivered to local needs with local people using the Nisai platform, training, QA



Delivered anywhere there is a mobile phone signal or internet

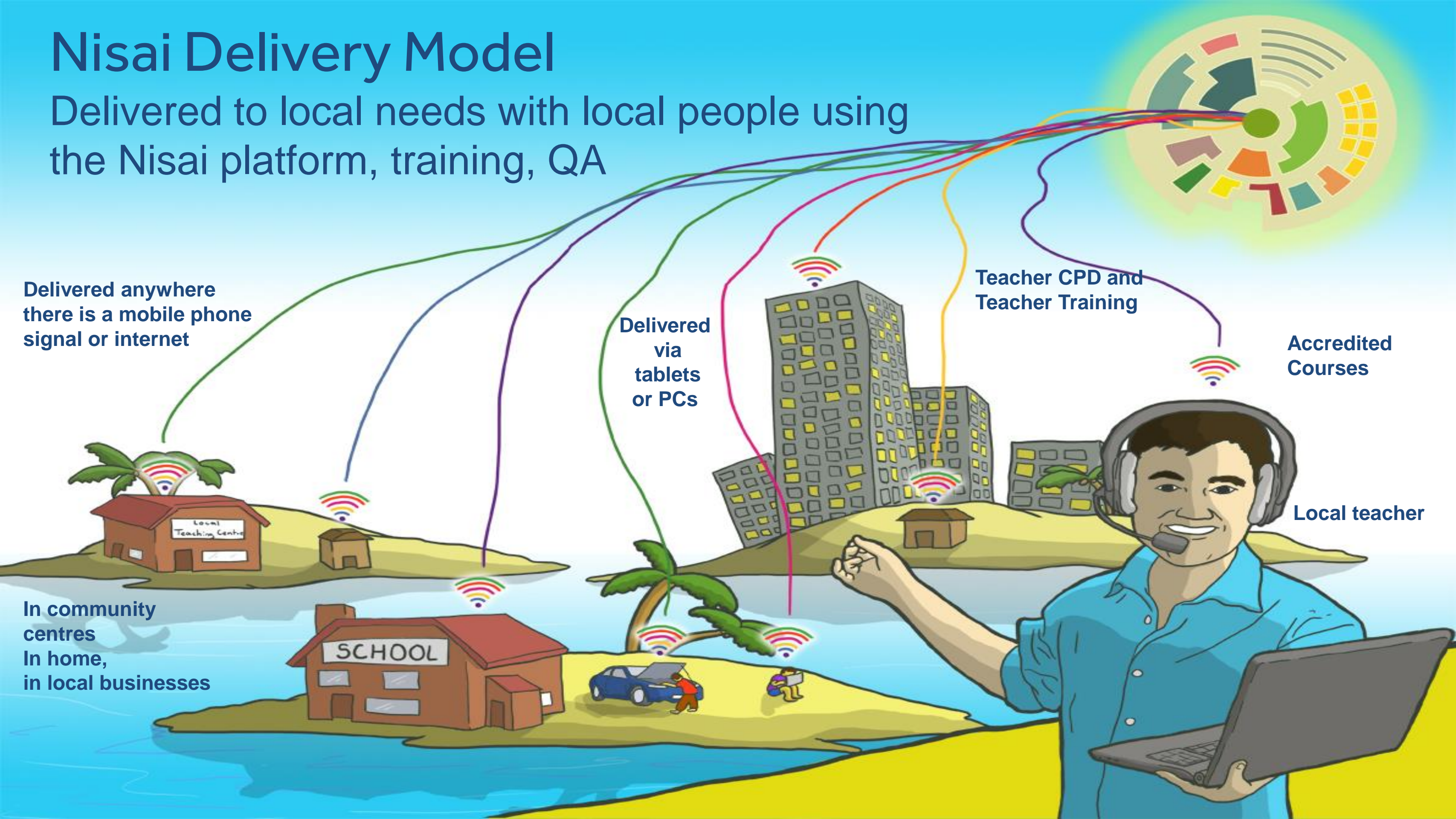
Delivered via tablets or PCs

Teacher CPD and Teacher Training

Accredited Courses

Local teacher

In community centres
In home,
in local businesses



Teacher CPD – Delivered Online

- Delivery of teacher CPD in the UK and to overseas to Nisai Partners
 - Trainers using an online platform to encourage involvement, interaction, small group work
 - SEN Training by skilled and qualified staff
 - Modules covering Autism, Managing Challenging Behaviour, working with gifted and talented learners, Managing student anxiety
 - Workshops being delivered online in multiple locations to make the programmes affordable – reducing travel and premises costs
 - Staff accessing from their place of work and in twilight sessions
-

Outcomes


- Better standards in the quality of teaching
 - Upskilling teachers who are already recruited
 - Job satisfaction – staff being supported and invested in
 - Staff retention improves
 - Issue of staff recruitment and staff shortages is addressed
 - Students outcomes improve
 - Education is made more accessible to learners due to the breadth of the teachers skillset
 - Teachers are empowered, well trained, professionally qualified, motivated across the whole education system
-



Nisai Learning



Offering a high-quality, experienced implementation model to support the targets to meet the Sustainable Development Goal for Education.



Thank You

A decorative graphic consisting of three horizontal bars. The top bar is a solid green rectangle. Below it is a thin orange line. At the bottom right is a purple rectangle.

Dhruv.Patel@nisai.com
nisai.com