



INEP

Indicators for SDG 4 - Brazil

Daniel Capistrano

National Institute for Education Research and Studies - INEP

1st Technical Cooperation Group meeting

Washington DC, USA - May 2016

INEP

Ministério da
Educação

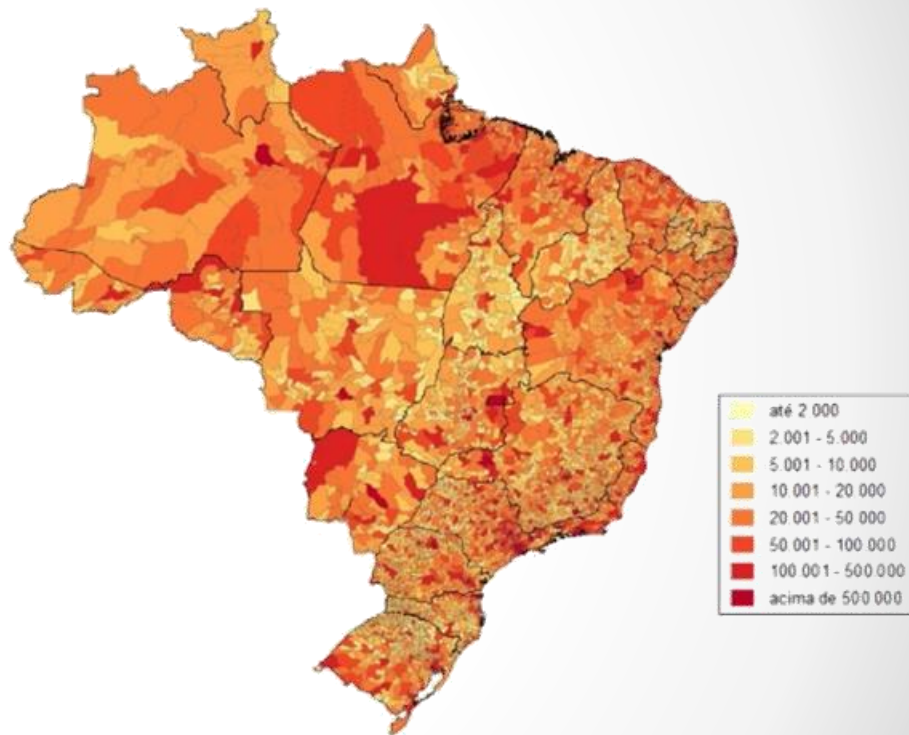
GOVERNO FEDERAL
BRASIL
PÁTRIA EDUCADORA

National system

26 States and DF

5,564 Municipalities

200 million inhabitants



4.1.1 Data sources (global indicator)

Project	Organiz.	Periodicity	Grades
PISA	OECD	3 years	15 y/o
ERCE	LLECE	97;2006;2013	3rd / 6th
Prova Brasil	Inep	2 years	5th / 9th
ANA	Inep	2 years	3rd

4.1.1 Main challenges

International: disaggregation, periodicity, dissemination and use, early grades

National: Minimum proficiency, comparability, private schools (disaggregation)

4.1 Basic Education Development Index

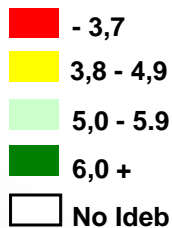
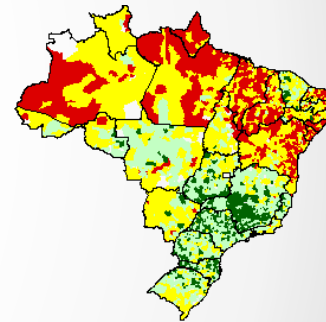
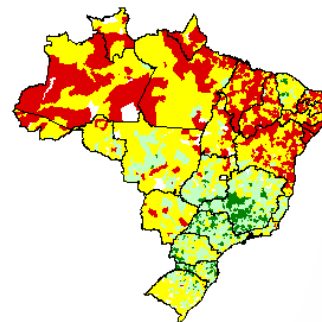
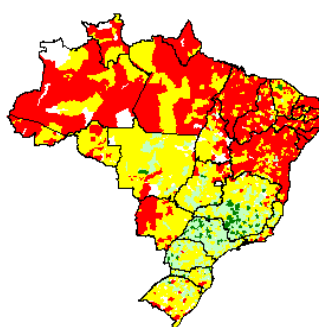
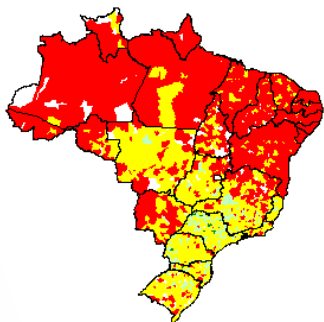
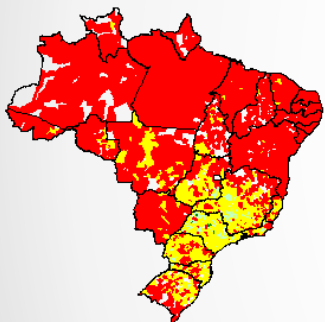
2005

2007

2009

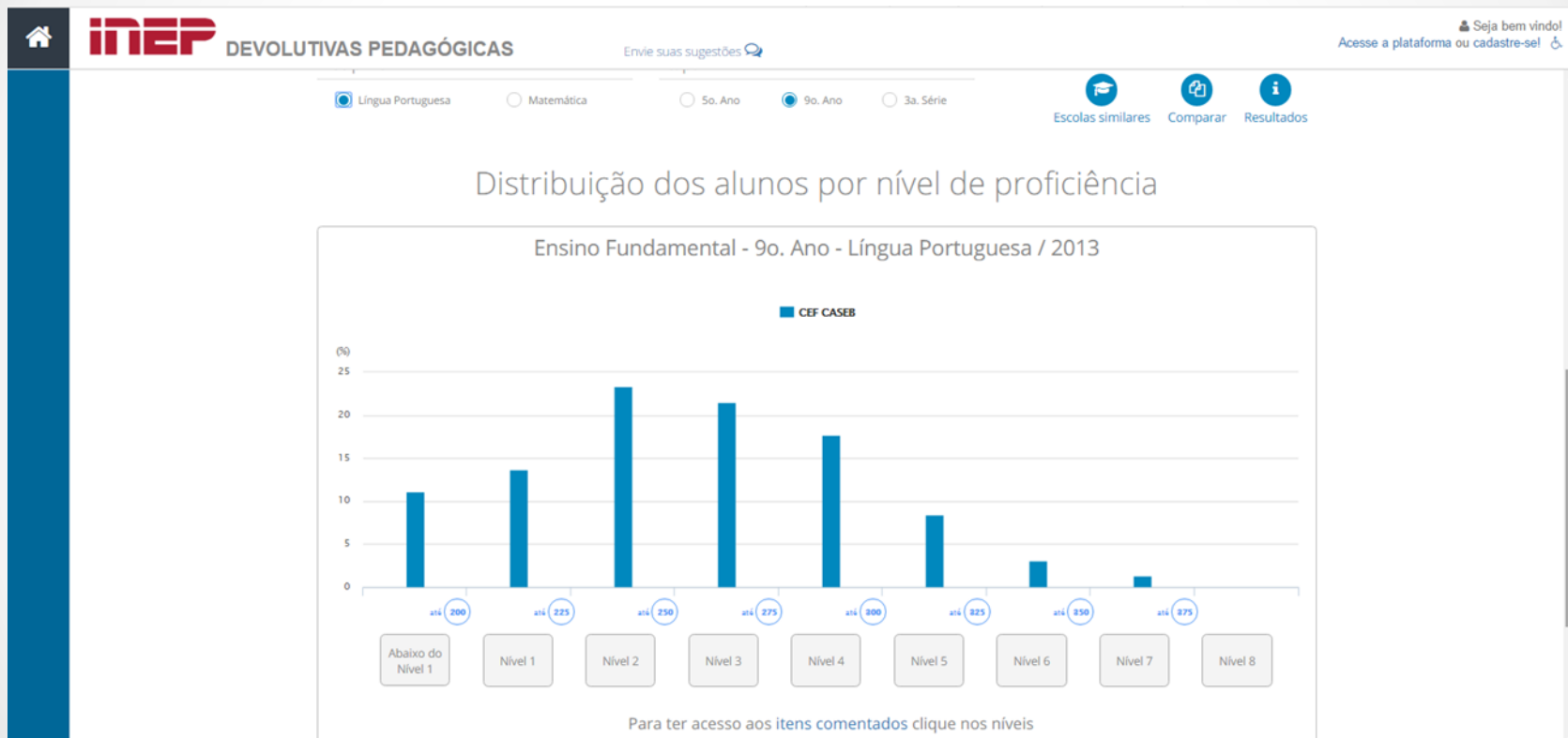
2011

2013

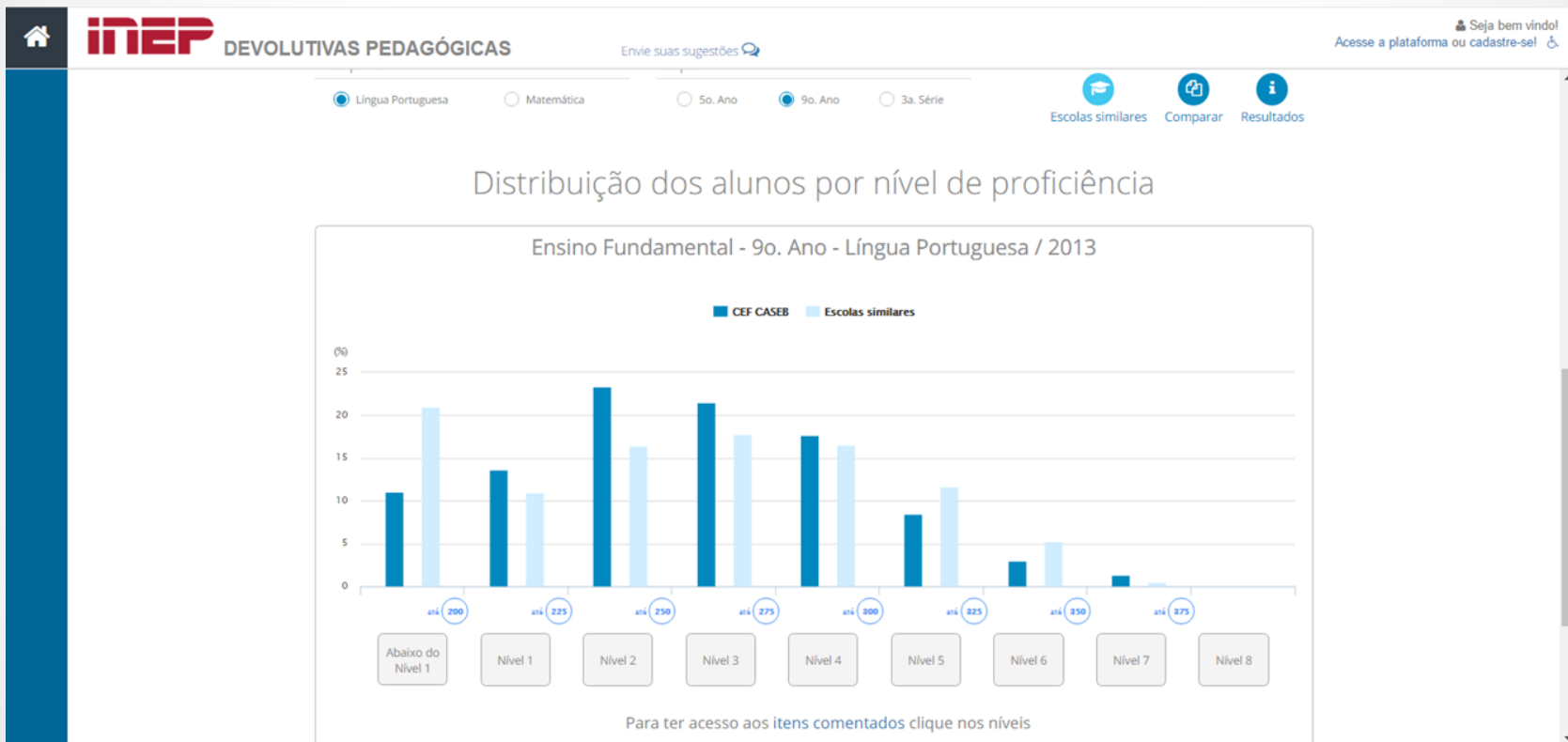


Ideb's municipal averages for primary 2005-2013
Source: MEC/Inep

4.1 Data dissemination

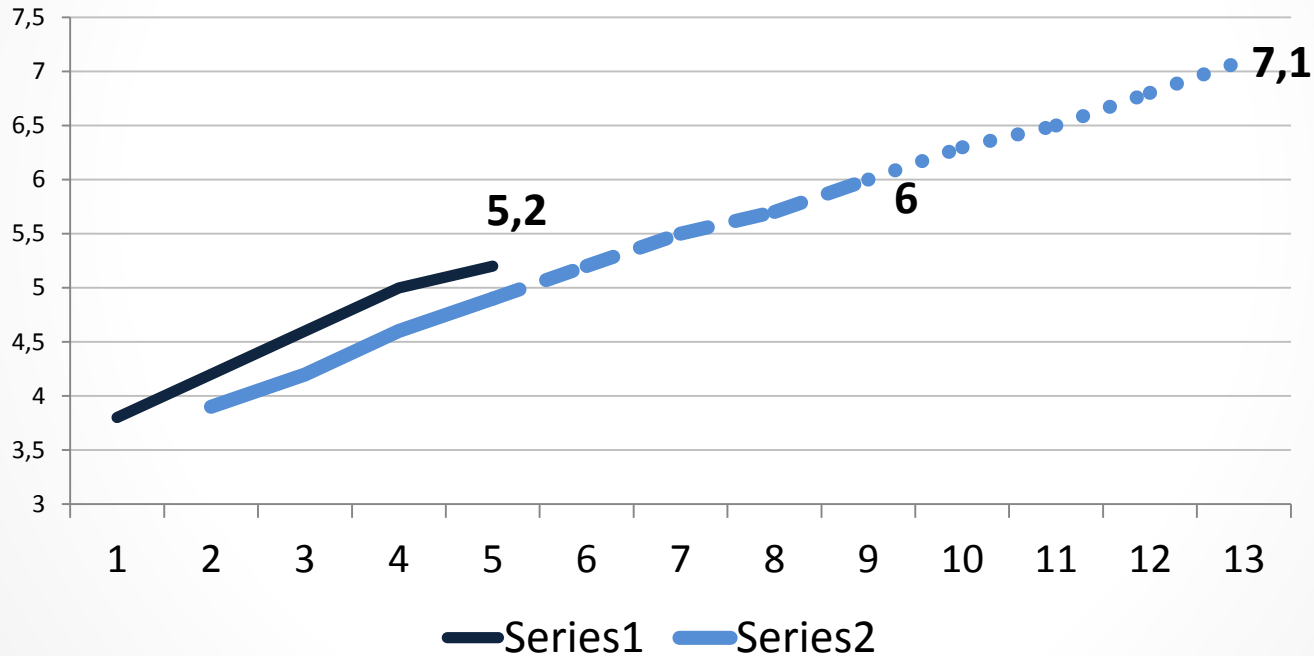


4.1 Data dissemination



4.1.1 SGD 4.1.1 and PNE

PNE: National Plan for Education 2021



4.1 Thematic indicators

Indicators based on the Education Census (3,6)
National Household Survey (4) and legislation (2?,7)

Potential problems with the combination of two
different data sources (*e.g.* Out of school children)

4.2 Data Sources (global indicator)

No national or international data sources available for the global indicator in Brazil

ANEI (National Evaluation for ECE)

2017, 2 years, infrastructure/pedagogical resources/teachers qualifications and school management

4.2 Thematic indicators

Thematic indicators based on the national household survey (10, 11) and legislation (12)

4.2 Main challenges

Cost of implementation / periodicity

Implementation of a new survey for a specific age group

Dissemination and policy impact

4.4 Data sources

No national or international data sources available for the global indicator in Brazil

Thematic indicators based on national household surveys

4.4 Main challenges

Cost of implementation / periodicity

Household survey vs. a new survey

Dissemination and policy impact