



กระทรวงศึกษาธิการ
Ministry of Education

DETAILED INFORMATION ON THE PROMOTION OF
EQUAL OPPORTUNITY AND EQUALITY IN EDUCATION

"BRING STUDENTS BACK TO SCHOOL"

DROPOUT RECOVERY CENTER,
MINISTRY OF EDUCATION: DRC, MOE

MS.TREENUCH THIENTHONG
MINISTER OF EDUCATION



MINISTRY OF EDUCATION
319 CHANTHARAKASEM PALACE
RATCHADAMNOEN NOK ROAD, DUSIT
SUBDISTRICT, DUSIT DISTRICT, BANGKOK 10300



   
www.moe.go.th
Ministry of Education



กระทรวงศึกษาธิการ
Ministry of Education

Project implementation Procedures for forwarding information between departments



MINISTRY OF EDUCATION



12 AGENCIES COLLABORATION

- COOPERATE WORKING
- TRACK & SEARCH FOR LEARNERS
- PROVIDE SUPPORT IF NEEDED

PROVINCIAL LEVEL

- BOARD MEETING
- TRACKING
- BRINGING STUDENTS BACK TO SCHOOL
- ASSISTING FORWARD
- PREVENTING NOT TO BE OUT OF SYSTEM
- SUMMARISING RESULT
- REPORTING TO COORDINATION CENTER

AREA LEVEL

- ESA./VEC./NFE./ OPEC./SET.
- BOARD MEETING
 - SET UP IMPLEMENTATION PLAN
 - ANALYZE INFORMATION
 - SUPPORT
 - WORK WITH SCHOOLS
 - SUPERVISE, MONITERING, REPORT

PROJECT COLLABORATION CENTRE "bring students back to school"

- COORDINATE AT ALL LEVELS
- DEVELOPE TRACKING SYSTEM
- COLLECT RESULT & FORWARDING INFORMATION
- COLLECT PROBLEMS & PURPOSE OF SOLUTIONS
- SUMMARY REPORT
- DISTRIBUTE & PUBLISH



GOVERNMENT LEVEL OBEC./VEC./NFE./ OPEC.

- BOARD MEETING
- SET UP GUIDELINE
- AWARENESS RAISING
- COORDINATION
- FORWARD INFORMATION IN CASE STUDENT ISN'T FOUND

SCHOOL LEVEL

- BOARD MEETING
- ANALYZE & CHECK INFORMATION
- FINDING UP STUDENTS WITH AUTHORITY UNIT
- COLLABORATION WITH MOU AGENCY
- SUMMARIZE & REPORT



www.moe.go.th
Ministry of Education



MINISTRY OF EDUCATION
319 CHANTHARAKASEM PALACE,
RATCHADAMNORN ROAD, DUSIT,
SUBDISTRICT, DUSIT DISTRICT, BANGKOK 10300



กระทรวงศึกษาธิการ
Ministry of Education

"BRING STUDENTS BACK TO SCHOOL"

Updated on 23 September 2022

Academic year 2021–2022

Drop out Students

121,642 ppl.

Back to School

104,122 ppl.

Remaining

17,520 ppl.



For more details

Ordinary Student Group

8,400 ppl.

OBEC.
(The disable)

794 ppl.

NFE.
(The disable)

8,326 ppl.



OPS.

4,750 ppl.



OBEC.

373 ppl.



VEC.

3,277 ppl.



NEF.

4,006 ppl.



OPEC.

744 ppl.



MINISTRY OF EDUCATION
319 CHANTHARAKASEM PALACE,
RATCHADAMNOEN NOK ROAD, DUSIT
SUBDISTRICT, DUSIT DISTRICT, BANGKOK 10300

www.moe.go.th
Ministry of Education





กระทรวงศึกษาธิการ
Ministry of Education

Tracking information

Updated on 23 September 2022

Bring students back to school

Office of the Basic Education Commission



สำนักงานคณะกรรมการ
การศึกษาขั้นพื้นฐาน
Office of the Basic Education Commission



Status of students dropping out	31 May 2022		23 September 2022		▲ add ▼ reduce
	Total (person)	percentage	Total (person)	percentage	person
1. Tracking and found (Back to School)	20,053	71.28	20,106	71.47	▲ 53
2. Tracking and found (Not back to school)	7,355	26.14	7,357	26.15	▲ 2
3. Tracking and not found	426	1.52	373	1.33	▼ 55
4. Tracking in process	226	0.80	224	0.79	▼ 2
5. Died	72	0.26	74	0.26	▲ 2
Total	28,134	100	28,134	100	0

MINISTRY OF EDUCATION
319 CHANTHARAKASEM PALACE,
RATCHADAMNENI NOK ROAD, BUNSI
SUKHVIHIT, BUNSI DISTRICT, BANGKOK 10300

www.moe.go.th
Ministry of Education

Bring students back to school

Office of the Vocational Education Commission



Status of students dropping out	31 May 2022		23 September 2022		▲ add ▼ reduce
	Total (person)	percentage	Total (person)	percentage	person
1. Tracking and found (Back to School)	1,657	8.90	1,820	9.78	▲ 163
2. Tracking and found (Not back to school)	8,085	43.44	8,506	45.70	▲ 421
3. Tracking and not found	3,262	17.53	3,277	17.61	▲ 15
4. Tracking in process	5,465	29.36	4,864	26.13	▼ 601
5. Died	143	0.77	145	0.78	▲ 2
Total	18,612	100	18,612	100	

Bring students back to school

Office of the Non-Formal and Informal Education



Status of students dropping out	31 May 2022		23 September 2022		▲ add ▼ reduce
	Total (person)	percentage	Total (person)	percentage	person
1. Tracking and found (Back to School)	1,986	20.68	2,458	25.60	▲ 472
2. Tracking and found (Not back to school)	2,716	28.28	3,096	32.24	▲ 380
3. Tracking and not found	4,858	50.59	4,006	41.72	▼ -852
4. Tracking in process	0	0.00	0	0.00	0
5. Died	43	0.45	43	0.45	0
Total	9,603	100	9,603	100	0

Bring students back to school

Office of the Private Education Commission



 Total number of followers 10,906 people



Status of students dropping out	31 May 2022		23 September 2022		▲ add ▼ reduce
	Total (person)	percentage	Total (person)	percentage	person
1. Tracking and found (Back to School)	3,601	33.40	7,160	66.40	▲ 3,559
2. Tracking and found (Not back to school)	6,414	59.48	2,879	26.70	▼ 3,535
3. Tracking and not found	768	7.12	744	6.90	▼ 24
4. Tracking in process	0	0	0	0	0
5. Died	123	1.14	123	1.14	0
Total	10,906	100	10,906	100	

Bring students back to school

Bureau of Special Education



 Total number of students, and disabled people 7,173 people



Status of students dropping out	31 May 2022		23 September 2022		▲ add ▼ reduce
	Total (person)	percentage	Total (person)	percentage	person
1. Tracking and found (Back to School)	5,951	82.96	6,027	84.02	▲ 76
2. Tracking and found (Not back to school)	290	4.04	297	4.14	▲ 7
3. Tracking and not found	878	12.24	794	11.07	▼ 84
4. Tracking in process	0	0	0	0	0
5. Died	54	0.75	55	0.77	▲ 1
Total	7,173	100	7,173	100	

Bring students back to school

Office of the Non-Formal and Informal Education (The disabled)



Status of students dropping out	31 May 2022		23 September 2022		▲ add ▼ reduce
	Total (person)	percentage	Total (person)	percentage	person
1. Tracking and found (Back to School)	1,624	3.4	14,377	30.4	▲ 12,753
2. Tracking and found (Not back to school)	35,291	74.5	6,999	14.8	▼ 28,292
3. Tracking and not found	8,327	17.6	8,327	17.6	0
4. Tracking in process	0	0	0	0	0
5. Died	2,098	4.4	2,099	4.43	▲ 1
6. Tracking to other agencies (MSDHS.)	0	0	15,538	32.8	
Total	47,340	100	47,340	100	

* Remarks: Forward to other agencies (MSDHS.) 15,583 people due to the fact that they didn't intentionally enter into the system.



กระทรวงศึกษาธิการ
Ministry of Education

Problems & Obstacles

5. Insufficient knowledge of operations and budgets

4. The agencies information is insufficient to provide assistance



1. Unable to contact students due to oftenly move of families without notice

2. Unsettled residency area of parents making it hard to contact and follow up

3. Students move with parents to a workplace that is inconvenient to travel to school



MINISTRY OF EDUCATION
319 CHANTHARAKASEM PALACE,
RATCHADAMNORN ROAD, DUSIT,
SUBDISTRICT, DUSIT DISTRICT, BANGKOK 10300


www.moe.go.th
Ministry of Education



กระทรวงศึกษาธิการ
Ministry of Education

Solutions

1 Coordinate actively with 12 agencies

3 Developing comprehensive operational guidelines to assist in finding students

2 Share student information with the office of registration administration to find students whose parents live in the unsettled places.

4 There should be a coordinating unit to integrate operations and bring students back to school



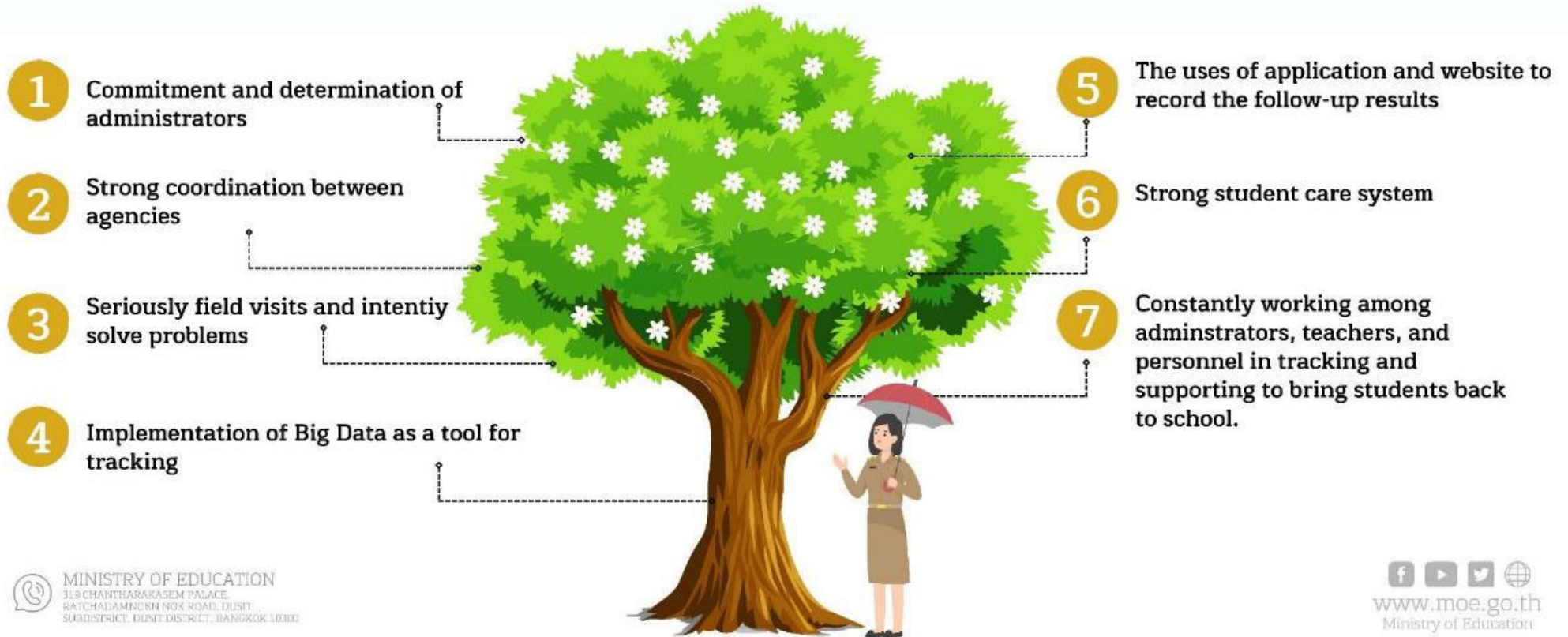
MINISTRY OF EDUCATION
319 CHANTHARAKASEM PALACE,
RATCHADAMNORN ROAD, DUSIT,
SUBDISTRICT, DUSIT DISTRICT, BANGKOK 10300


www.moe.go.th
Ministry of Education



กระทรวงศึกษาธิการ
Ministry of Education

Success factors



MINISTRY OF EDUCATION
319 CHANTHARAKASEM PALACE,
RATCHADAMNORN ROAD, DUSIT,
SUBDISTRICT, DUSIT DISTRICT, BANGKOK 10300



www.moe.go.th
Ministry of Education



กระทรวงศึกษาธิการ
Ministry of Education

THANK YOU

DETAILED INFORMATION ON THE PROMOTION OF
EQUAL OPPORTUNITY AND EQUALITY IN EDUCATION

"BRING STUDENTS BACK TO SCHOOL"

DROPOUT RECOVERY CENTER,
MINISTRY OF EDUCATION: DRC, MOE

MS.TREENUCH THIENHONG
MINISTER OF EDUCATION



MINISTRY OF EDUCATION
319 CHANTHARAKASEM PALACE
RATCHADAMNOEN NOK ROAD, DUSIT
SUBDISTRICT, DUSIT DISTRICT, BANGKOK 10300



www.moe.go.th
Ministry of Education