

# How to prepare a map in answer to the Retrospective Inventory?



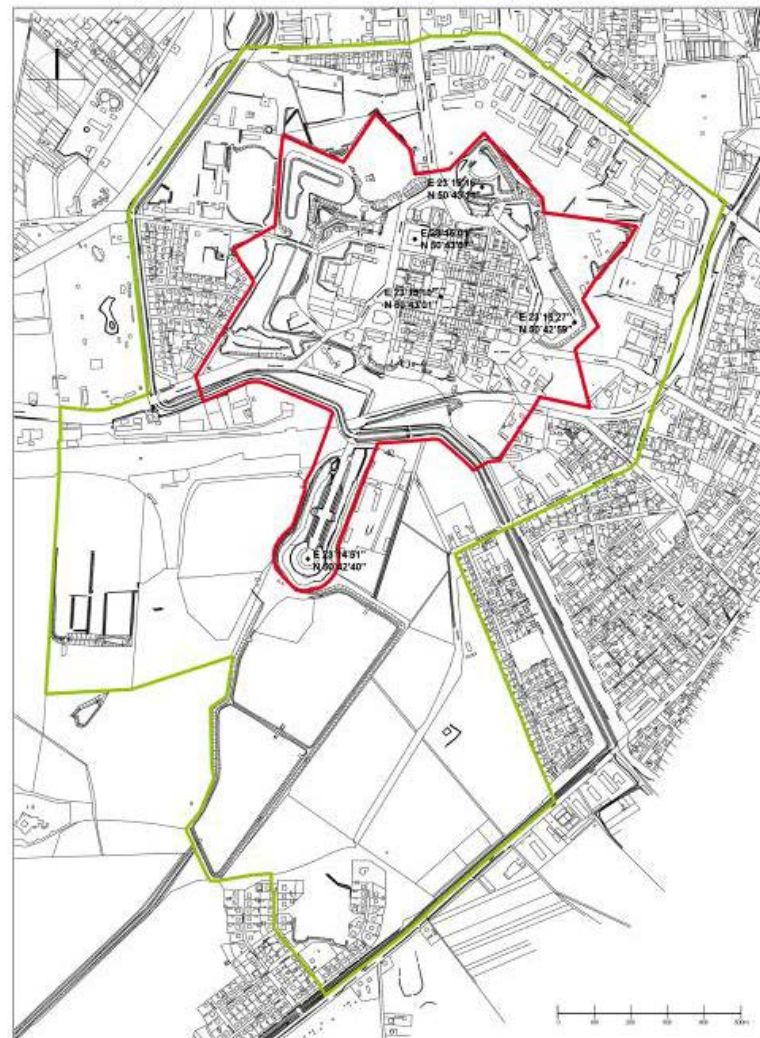
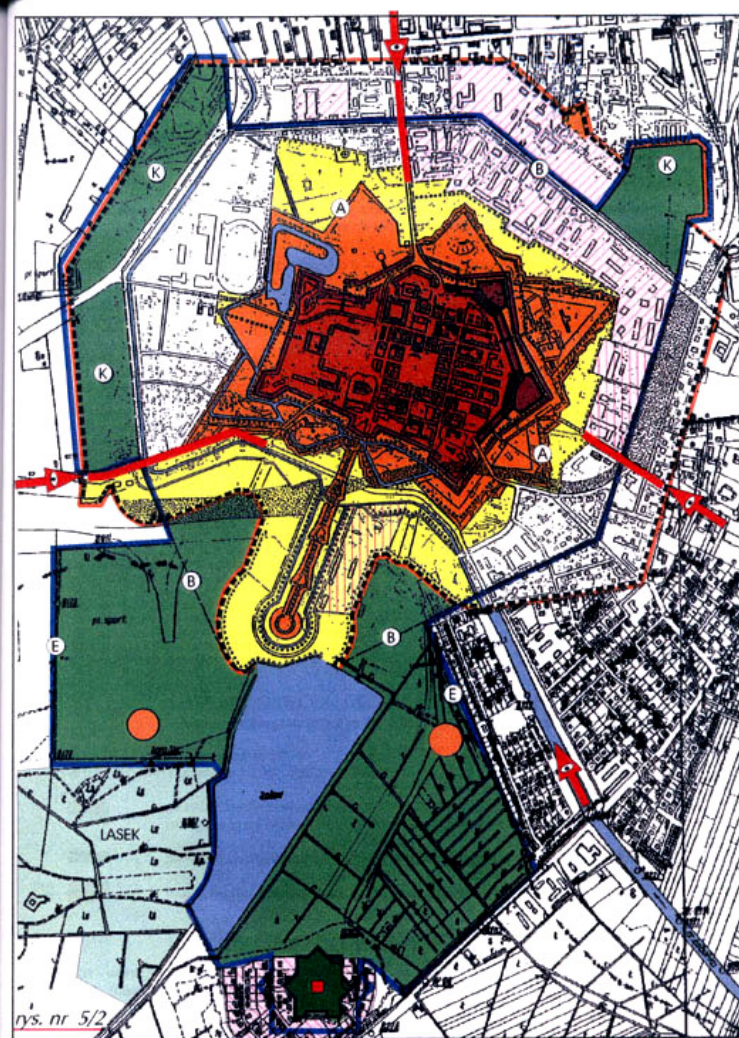
# What is the Retrospective Inventory?

- A project aiming at clarifying the original delimitation of World Heritage properties inscribed between 1978 and 1998
- All States Parties in Europe have been requested to submit good quality maps showing the boundaries of their properties as inscribed on the World Heritage List (States Parties in North America will receive a similar request by the end of 2012)
- The expected result is improving the protection and management of early inscribed WH properties





# Possible boundary issues at the time of the inscription: 2) Properties with an unclear delimitation



OPRACOWANIE arch. i inżyn. i ogólnie arch. WYKONANIE arch. Agnieszka Kozłak  
 Maciejewski i architektura programowa dla projektów Planu Ogólnego (P.O.) i Planu Rozwojowego (P.R.) - Państwowe Biuro Studiów Architektonicznych i Inżynierskich - BISM 2015

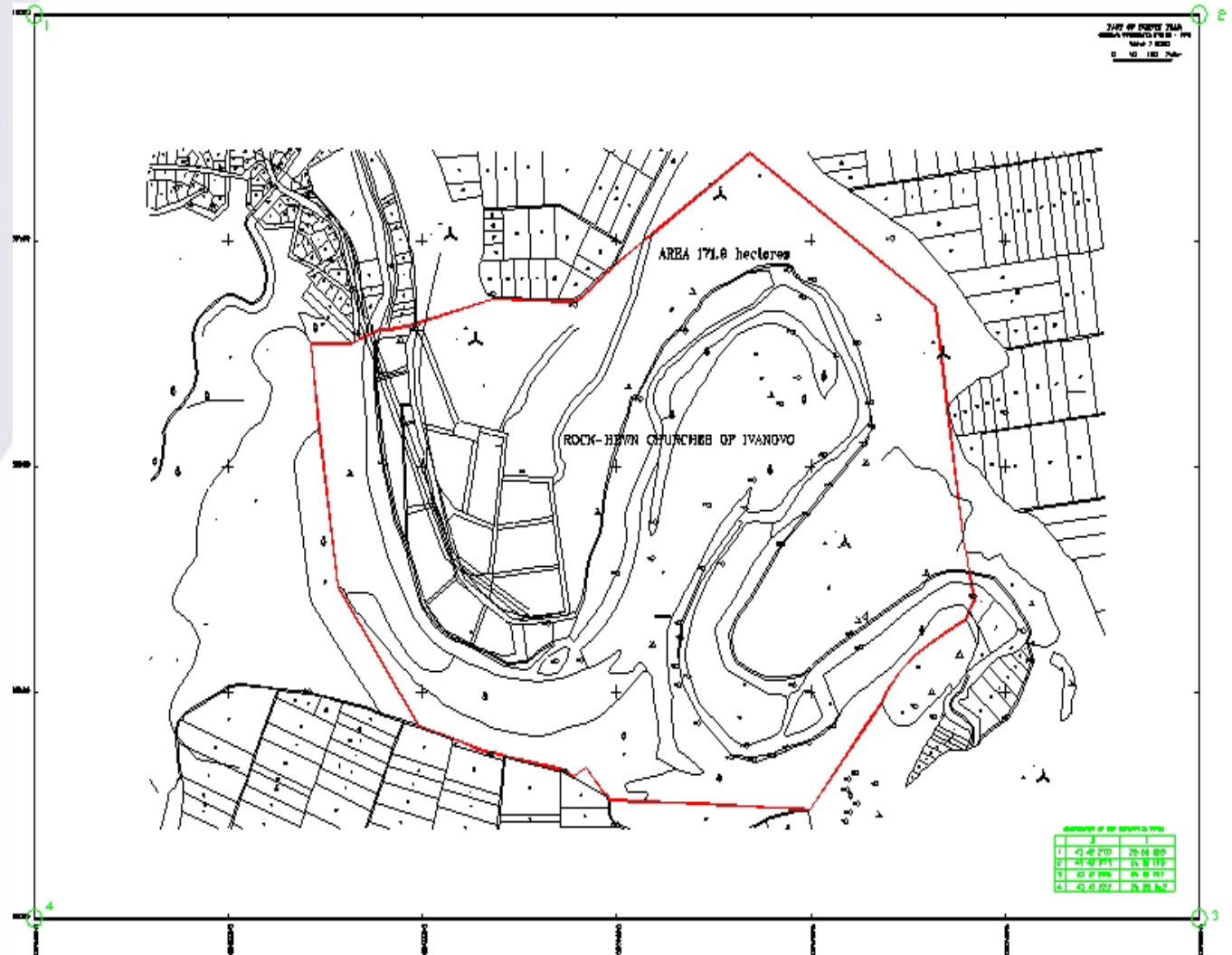
**PLANISTYCZNE UWARUNKOWANIA OCHRONY I KSZTAŁTOWANIA ZAMOJSKIEGO ZESPOŁU ZABYTKOWEGO STAREGO MIASTA WRAZ Z XIX-W. FORTYFIKACJAMI ORAZ ICH BEZPOŚREDNIM OTOCZENIEM**

Old City of Zamość, Poland

- - boundary of World Heritage property
- - boundary of the buffer zone of the World Heritage property



# Possible boundary issues at the time of the inscription: 3) Properties without a delimitation

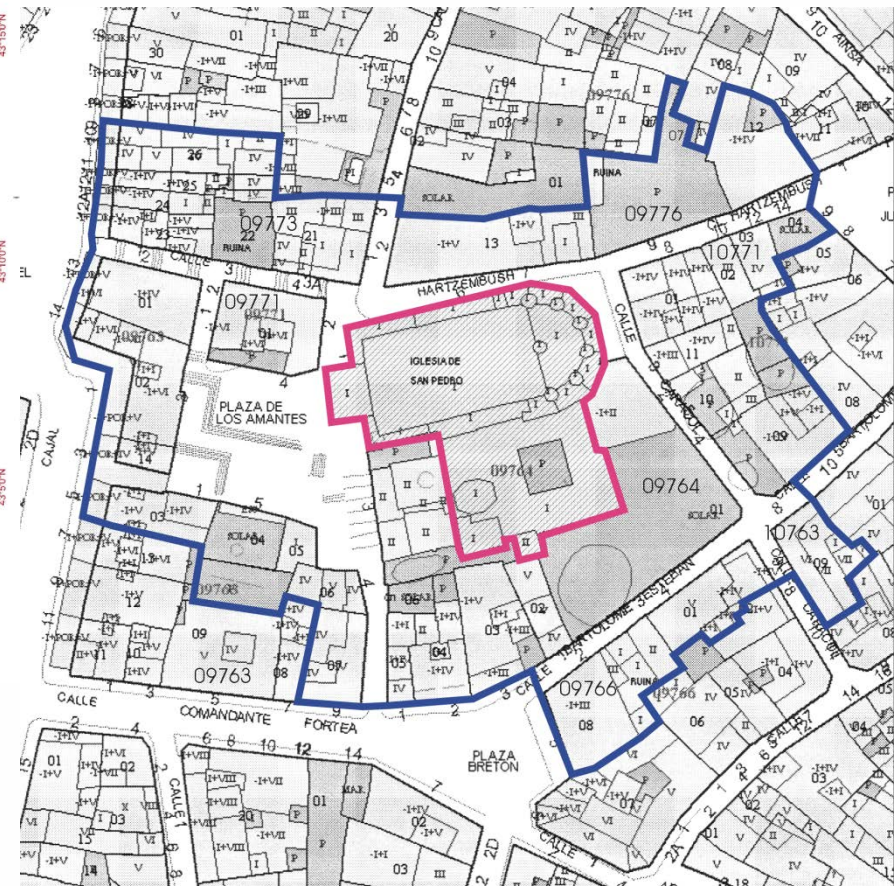
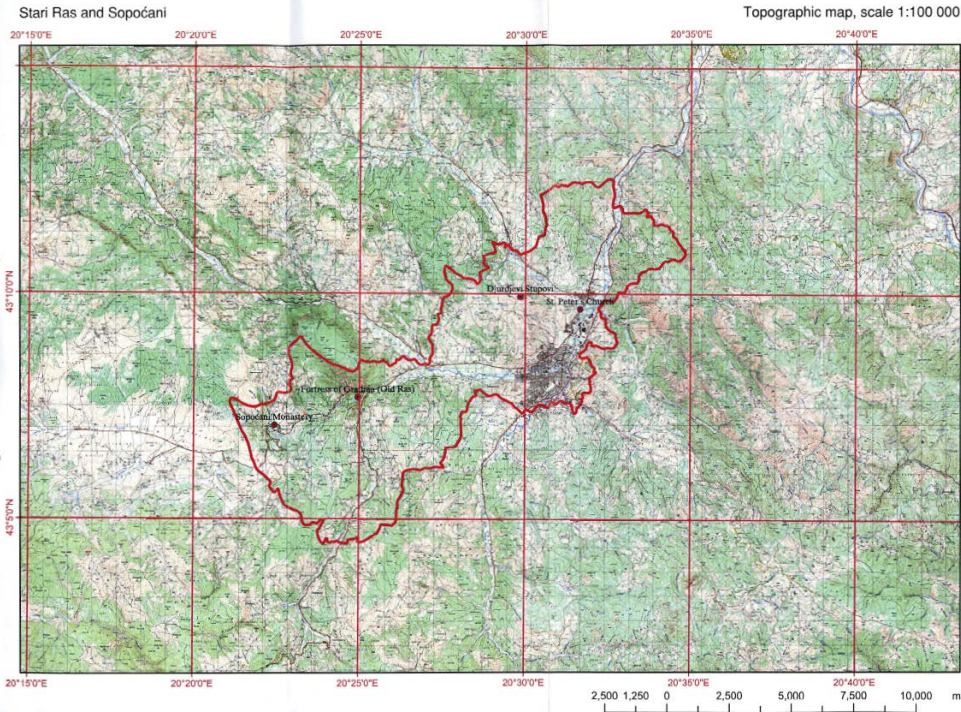


# Requirements for complete maps

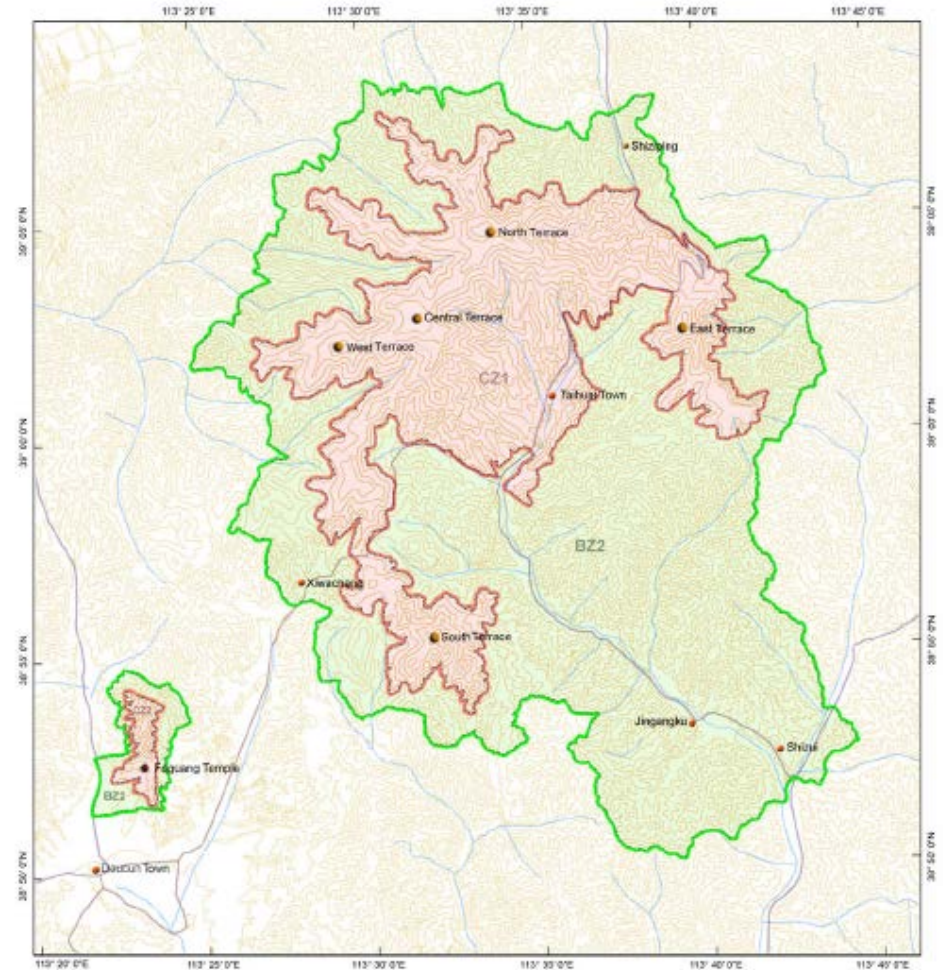
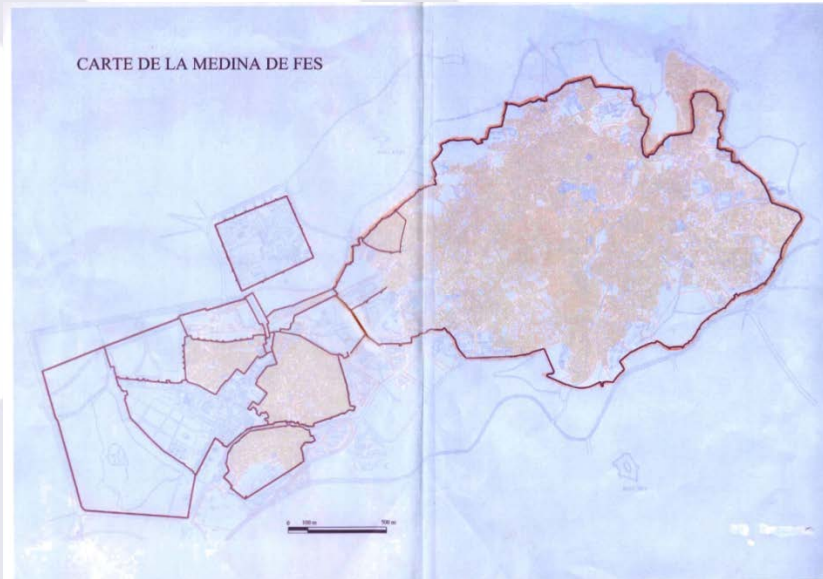
- The appropriate typology
- A clear delimitation of the property as inscribed
- A bar scale
- References to geographical coordinates
- The orientation
- A legend referring to the boundary of the World Heritage property
- The language
- The area in hectares



# Requirements for complete maps: the appropriate typology

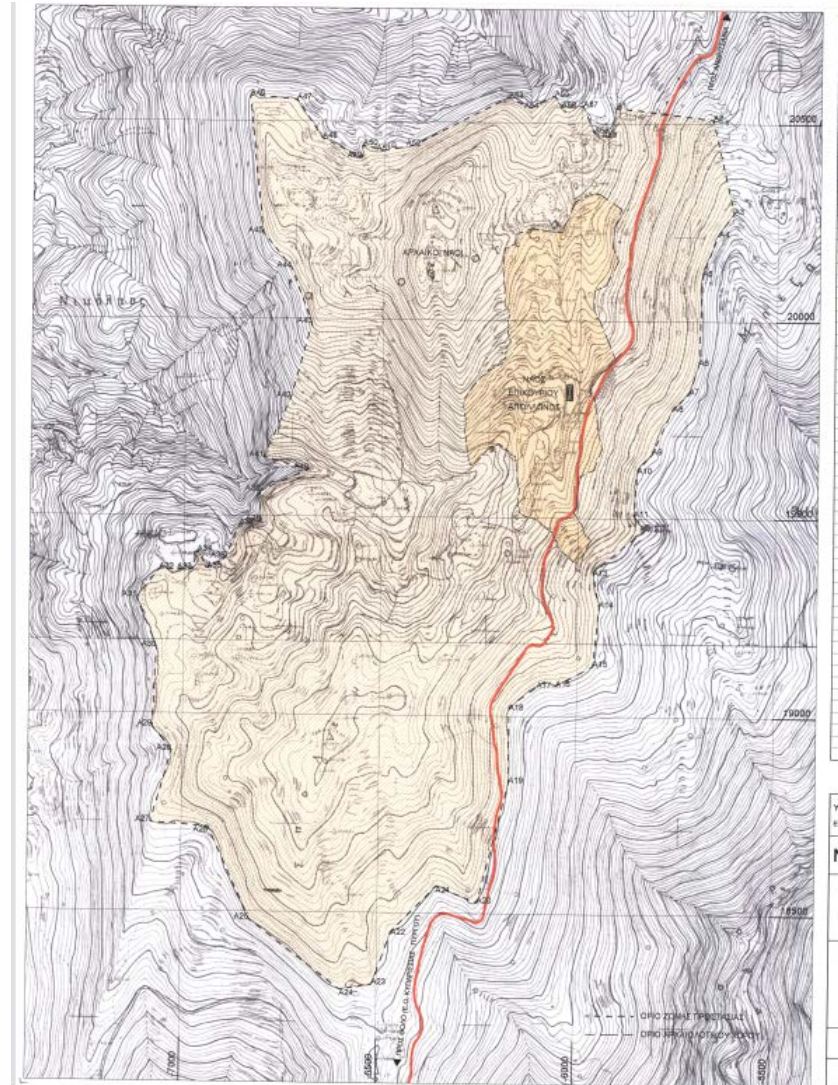
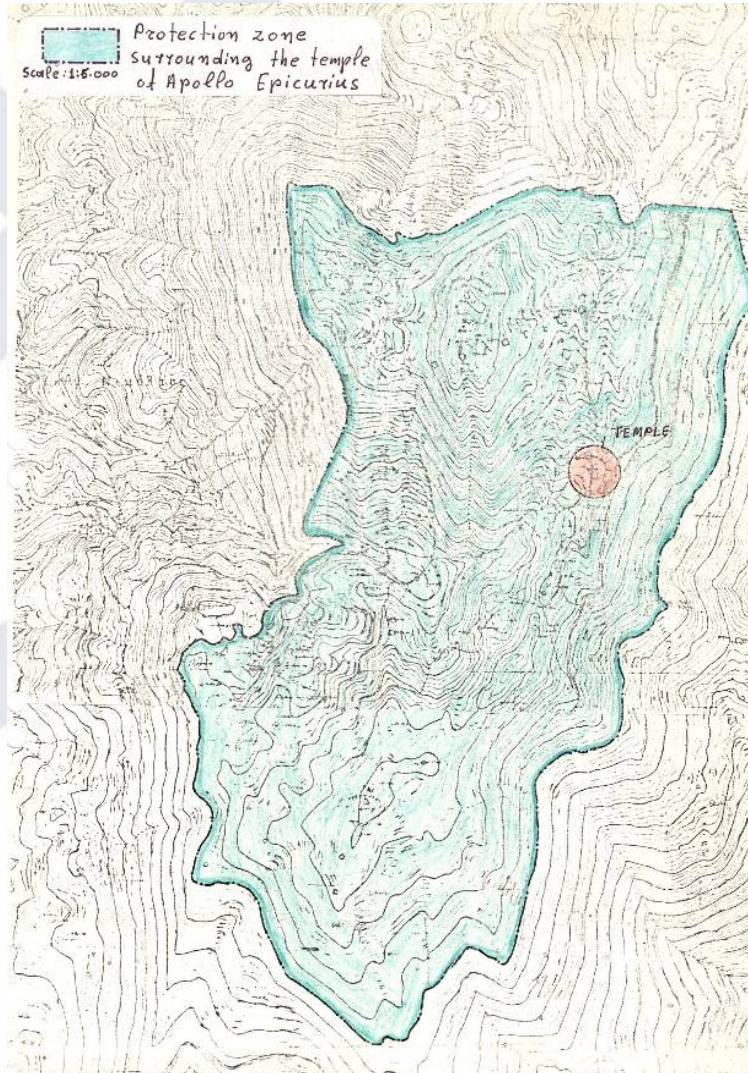


# Requirements for complete maps: a *clear* delimitation of the property as inscribed





# Requirements for complete maps: a clear *delimitation* of the property as inscribed

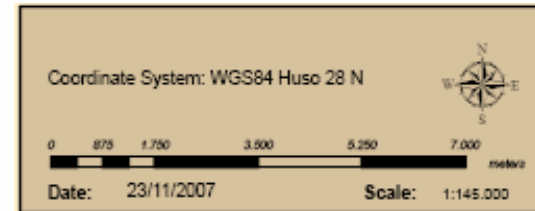


# Requirements for complete maps: a clear delimitation of the property as inscribed

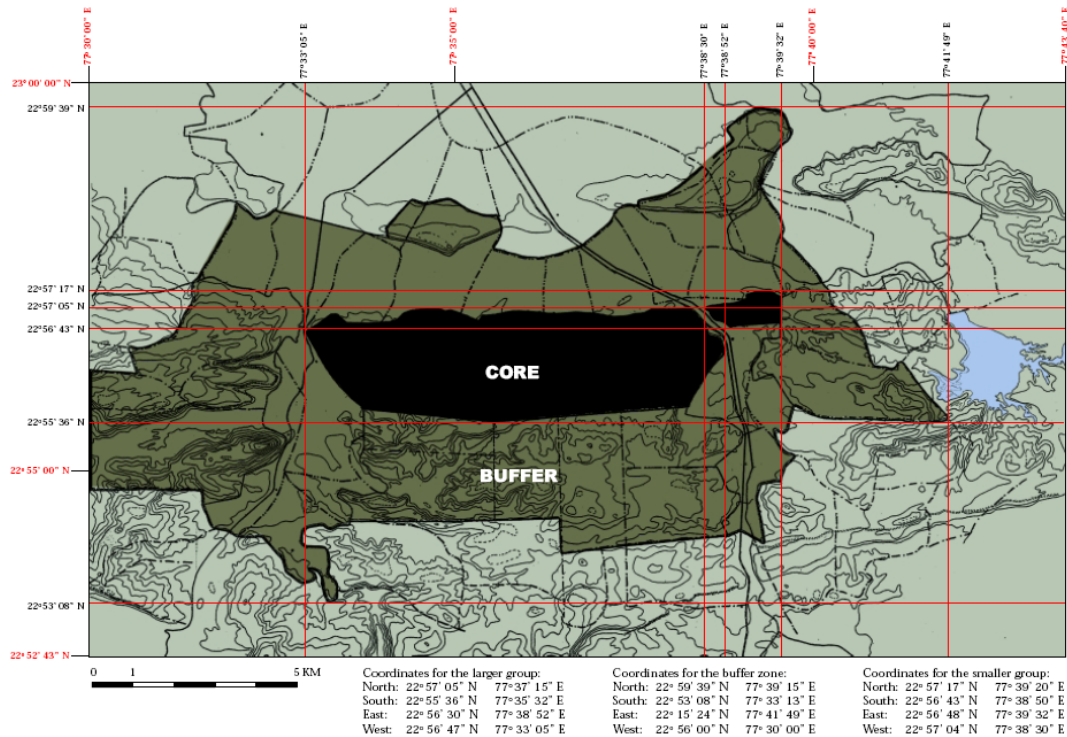


# Requirements for complete maps: a bar scale

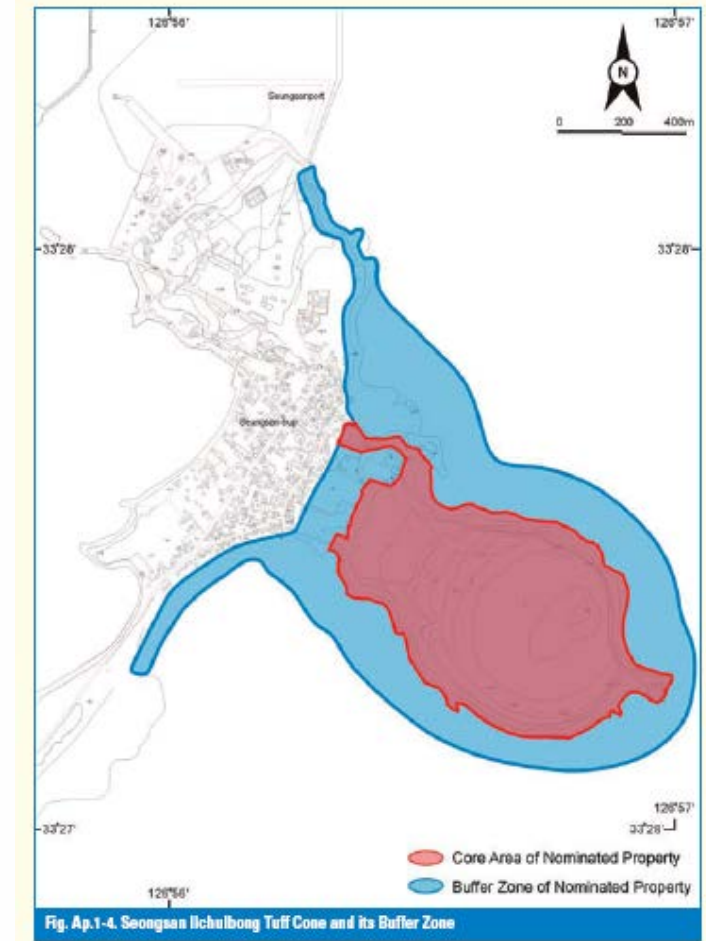
1 : 2000



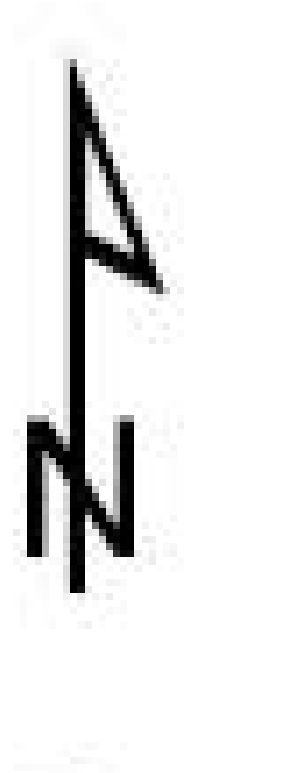
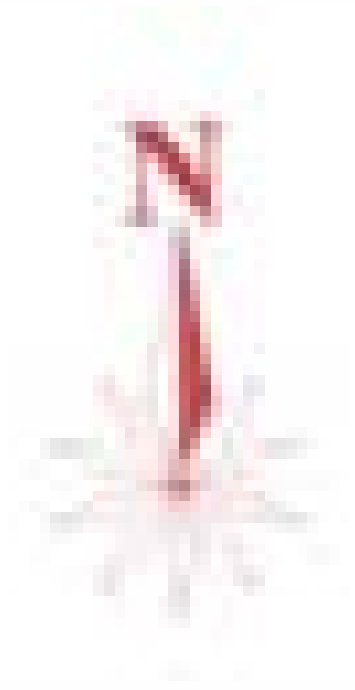
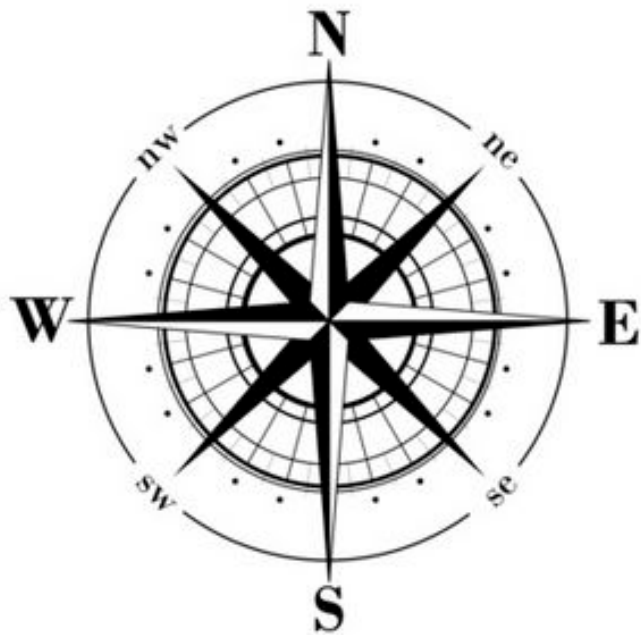
# Requirements for complete maps: references to geographical coordinates → coordinate grid and/or coordinate ticks



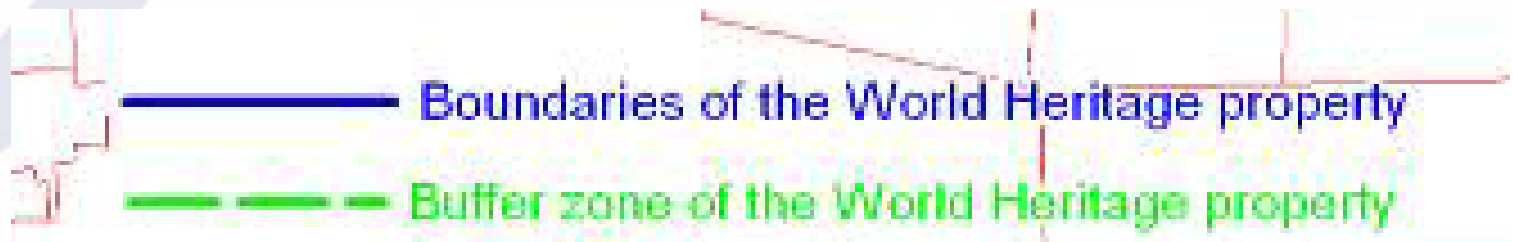
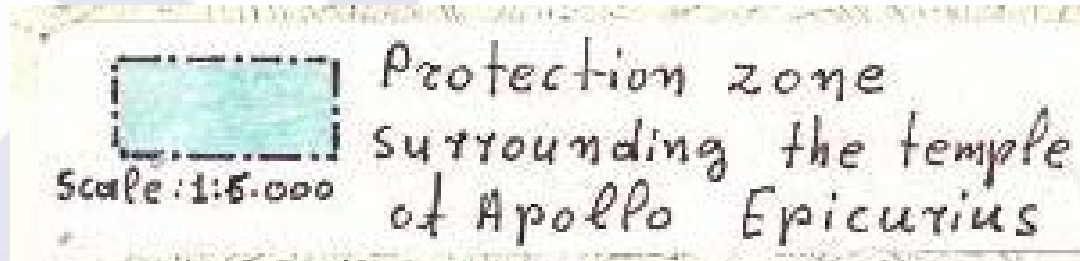
Map indicating coordinates of core and buffer zones



# Requirements for complete maps: the orientation



# Requirements for complete maps: a legend referring to the boundary of the World Heritage property



# Requirements for complete maps: the language

Ministerstwo i Ministerstwo Kultury i Dziedzictwa Narodowego, Warszawa, 2011

PLANISTYCZNE UWARUNKOWANIA OCHRONY I KSZTAŁTOWANIA  
ZAMOJSKIEGO ZESPOŁU ZABYTKOWEGO STAREGO MIASTA WRAZ  
Z XIX-W. FORTYFIKACJAMI ORAZ ICH BEZPOŚREDNIM OTOCZENIEM


TÁJVÉDELMI KÖRZET VÁZRAJZA

CITY OF LUXEMBOURG its Old Quarters and Fortifications  
Boundary of the UNESCO World Heritage property



# Requirements for complete maps: the area in hectares

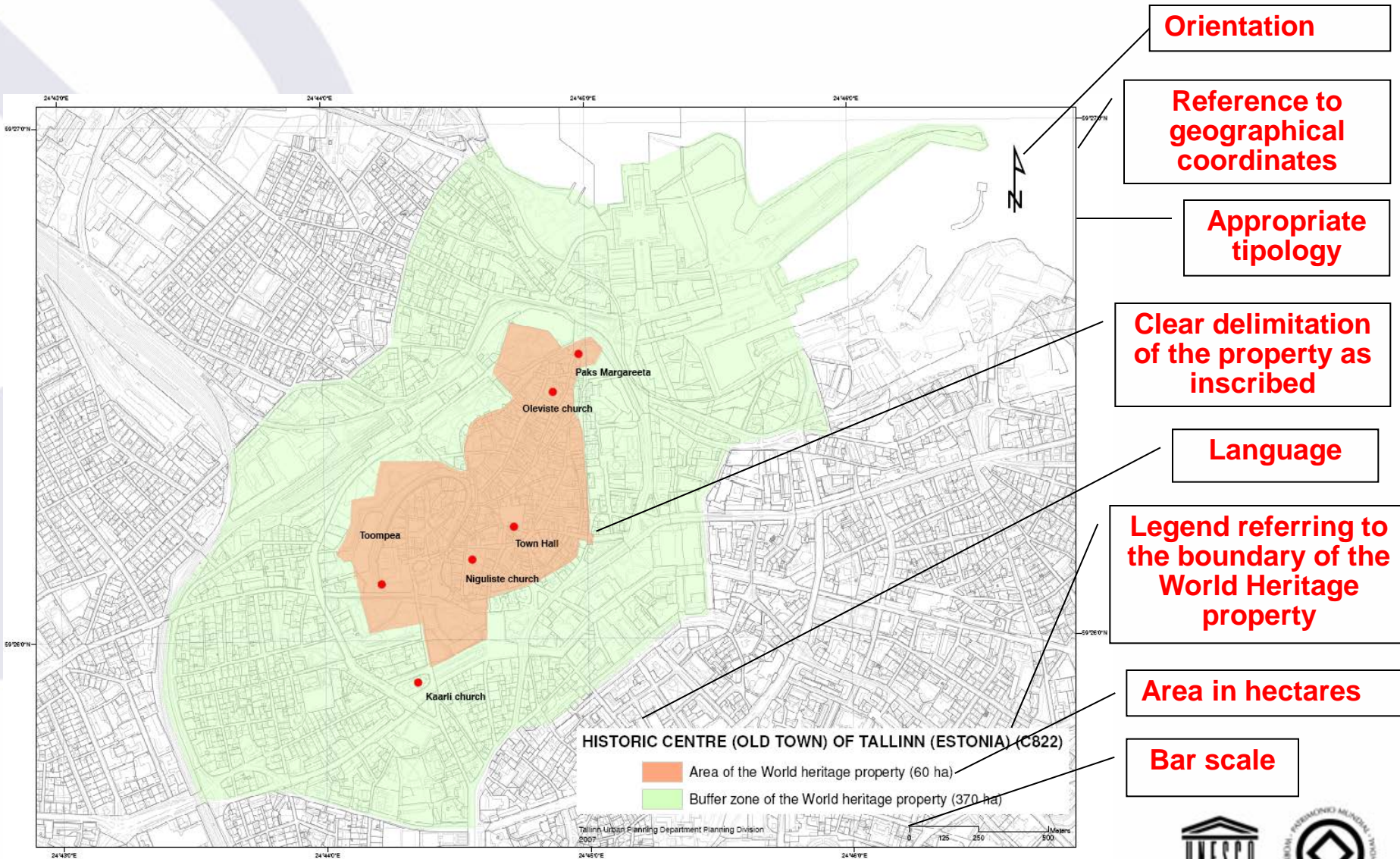
Inscription sur la liste  
(superficie en hectares)

 patrimoine mondial (0.86 ha)





# Summing up



Orientation

Reference to geographical coordinates

Appropriate tipology

Clear delimitation of the property as inscribed

Language

Legend referring to the boundary of the World Heritage property

Area in hectares

Bar scale

